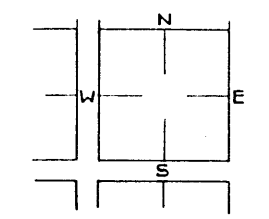


- DIRECTIONS :**
- (A) SHOW POSITION OF LINE ON BOTH THE ELEVATION AND PLAN FOR EITHER TYPE OF SPAN. SHOW LINE LOCATION IN AREA OF ANCHOR TIES.
 - (B) SKETCH IN PIER LOCATIONS AND SHOW SPAN LENGTHS ON MULTIPLE SPAN ELEVATION.
 - (C) FILL IN BRIDGE FILE NO., LEGAL LOCATION, DESCRIPTIVE LOCATION ON SECTION PLAN, TYPE OF BRIDGE AND DATE INSTALLED.
 - (D) SHOW A DIRECTIONAL ARROW POINTING NORTH ON PLAN VIEW.

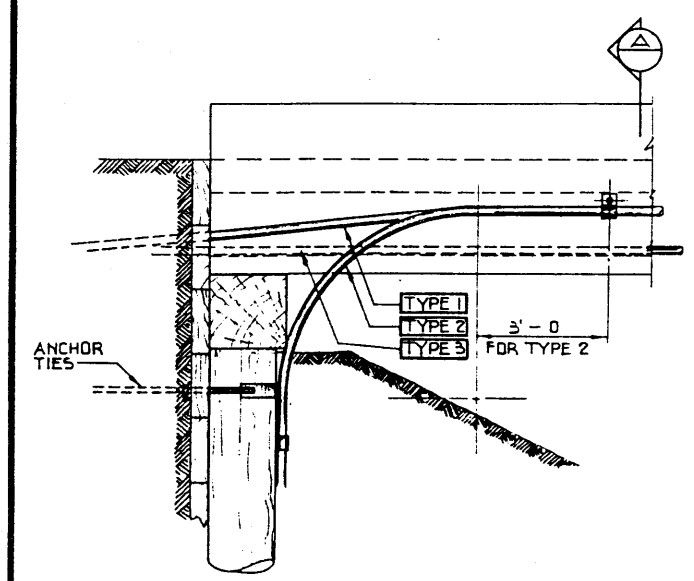


LOCATION : SEC. TP. R. MER.

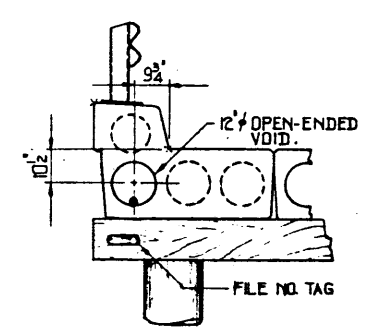
TYPE OF BRIDGE :

DATE INSTALLED :

BRIDGE FILE NO. :



(P) DETAIL
3/4"-1-0

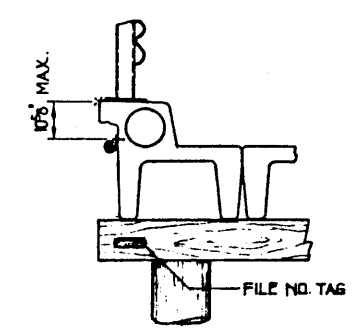


VS TYPE GIRDER.
TYPE 3 ONLY
ATTACHMENT INSTRUCTIONS

CONDUIT TO RUN THROUGH OPEN-ENDED VOID. DRILLING OF VS GIRDERS WILL NOT BE PERMITTED.

THIS SYSTEM TO BE USED FOR ALL VS GIRDERS BUILT AFTER LATE 1976. OLDER VS GIRDER BRIDGES DO NOT ALLOW FOR ATTACHMENT OF PHONE CONDUITS.

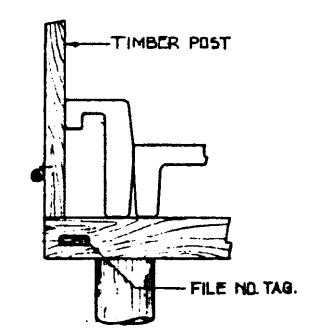
(A) SECTION
1/2"-1-0



HC TYPE GIRDER.
TYPE 1 OR TYPE 2
ATTACHMENT INSTRUCTIONS

CONDUIT TO BE ATTACHED TO THIS GIRDER BY APPROVED CLAMPS AND DRILLED INSERTS AT A VERTICAL DISTANCE NOT TO EXCEED 10" FROM THE TOP FACE OF THE CURB.

(A) SECTION
1/2"-1-0



TIMBER POST AS SHOWN.
TYPE 1 OR TYPE 2
ATTACHMENT INSTRUCTIONS

ON CONCRETE AND TIMBER BRIDGES WITH TIMBER POSTS THE CLAMPS MAY BE ATTACHED DIRECTLY TO THE TIMBER HANDRAIL POSTS WITH LAG BOLTS BELOW DECK ELEVATION.

(A) SECTION
1/2"-1-0

- GENERAL NOTES :**
- THIS DRAWING TO BE USED BY TELEPHONE UTILITIES TO RECORD INSTALLATION.
 - THIS DRAWING SHOWS THREE TYPICAL TYPES OF STANDARD BRIDGES. WHEN ATTACHING CONDUITS IT IS IMPORTANT TO DETERMINE WHICH TYPE OF BRIDGE YOU ARE DEALING WITH AND TO FOLLOW THE INSTRUCTIONS GIVEN FOR THAT TYPE.
 - IF CONDUIT RUNS THROUGH TIMBER BACKWALL, SHEETING MUST BE DRILLED TO EXACT SIZE OF CONDUIT DIAMETER AND THE RESULTING HOLE CAREFULLY FIELD TREATED WITH BRUSH GRADE CREOSOTE. DRILLING IN ANY OTHER TIMBER MEMBERS IS NOT ALLOWABLE.
 - EXCAVATION BEHIND BACKWALL MUST BE DONE BY HAND TO AVOID DAMAGE TO ANCHOR TIES.
 - THE CABLE SHOULD BE KEPT AWAY FROM SHOULDER OF ROADWAY.

PRELIMINARY ONLY *Superseded by S-1427 (insert)*

SUPERSEDED

DESIGNED		DRAWN BY		DATE		CHECKED BY		DATE		STREAM		LOCATION		HWY NO		SCALE		FILE NO		SHEET		DWG NO	
RG Q		M M F		JUNE 76												S-140W11				6		S-1000-76	

APPROVED		CHIEF BRIDGE ENGINEER	
DATE		DATE	
NO		DESCRIPTION	
AUG 76		REDRAWN FROM S-1000	

Albera		TRANSPORTATION BRIDGE BRANCH	
TELEPHONE LINE CONDUITS ON STANDARD BRIDGES			