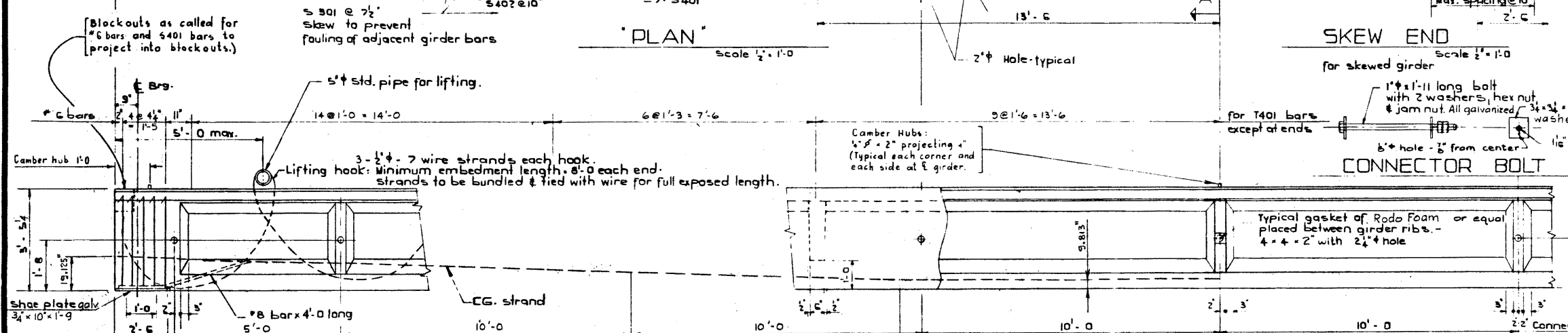
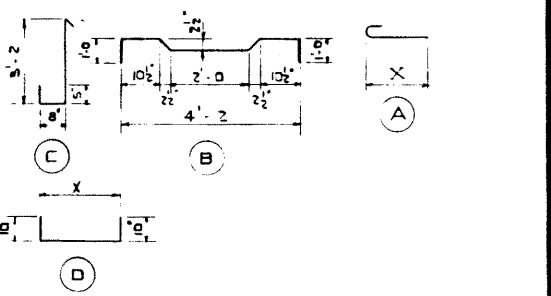


BAR LIST For unskewed Girder							
MARK	SIZE	NO	TYPE	LENGTH	WEIGHT		
S 301	3	240	A	1'-0	1'-6	135	
S 401	4	21	Sr.	2'-0	3'-0	365	
S 402	4	90	B	6'-4	3-81		
S 501	5	182	Sr.	4'-9	302		
T 401	4	18	C	4'-9	374		
D 601	6	4	D	4'-2	5'-10	95	
D 602	6	4	D	5'-0	6'-8	40	
T 601	6	4	D	6'-2	37		
						Total lbs: 2,269	

BAR TYPES :
(All bar dimensions are out to out)



GENERAL NOTES

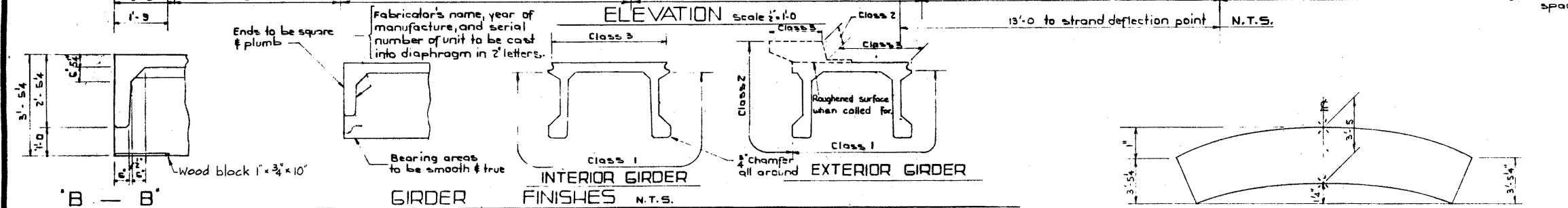
DESIGN
A.A.S.H.O. 1969 Specification
A.C.I. 318-63 shear design, $F_{sp} = 5.67$
Loading: 0.90 of one wheel line of an H 20 S 16-44 truck plus 2" wearing surface.

MATERIALS
Lightweight aggregates shall conform to the requirements of A.S.T.M. Specification C 330 with maximum aggregate size 3/4". Minimum 28 days compressive strength to be 4,500 psi. Unit weight of the concrete shall be not greater than 120 lb/cu.ft. in the plastic state. Entrained air shall be not less than 5%.

FABRICATION
Reinforcement: Diameters of all bends shall conform to the recommended sizes and all hooks, unless otherwise noted shall conform to the recommended sizes detailed in the A.C.I. Manual of Standard Practice for Detailing Reinforced Concrete Structures. Prestressing steel: Initial tensioning load = 12.24 strand Design load = 12.24 strand
Concrete must attain 4,000 psi compressive strength before the prestressing force is transferred. Galvanizing shall be in accordance with A.S.T.M. Specification A 153.

Units are to conform to the requirements of the Alberta Bridge Branch Specification B 190-64 for the Manufacture of Prestressed Concrete Bridge Units.

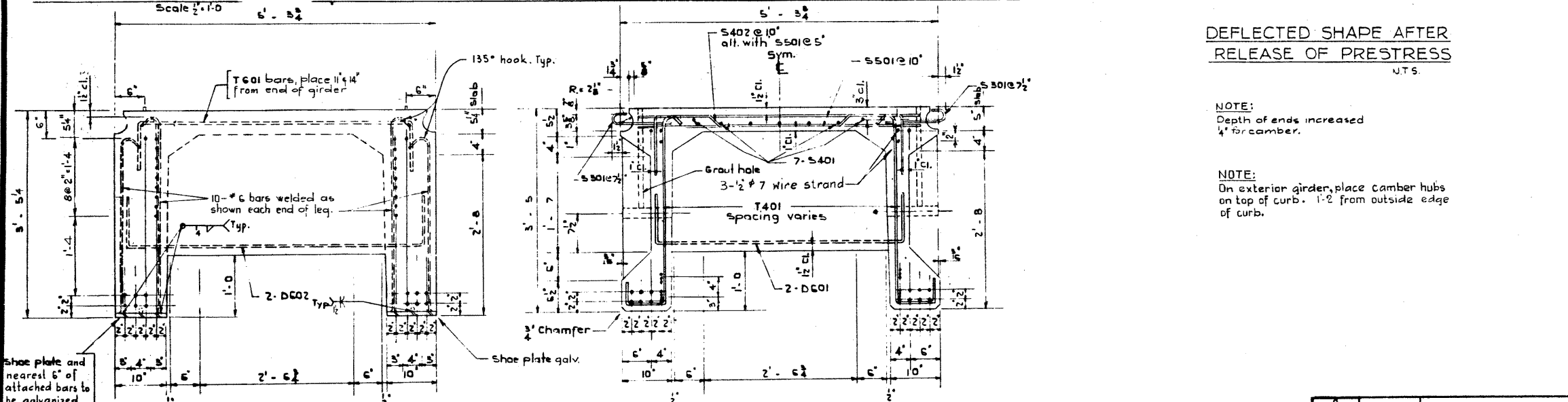
ERECTION
Lifting force at ends to be applied to the full length of the girder surface to be lifted. (All lifting points to be indicated on the drawing.)



DEFLECTED SHAPE AFTER RELEASE OF PRESTRESS
N.T.S.

NOTE:
Depth of ends increased 4" for camber.

NOTE:
On exterior girder, place camber hubs on top of curb. 1'-2" from outside edge of curb.



END VIEW
Scale 1" = 1'-0"

"A - A"
Scale 1" = 1'-0"

DESIGNED BY: J.C. Yih
 CHECKED BY: D. Audley & F. Budia
 DATE: July 1970
 DATE: July 1970

SUPERSEDED

APR 9 - 1973
BY S-1012-73

PRESTRESSED CONCRETE
75'-0 TYPE FC GIRDER
LIGHTWEIGHT UNIT

GOVERNMENT OF THE PROVINCE OF ALBERTA
DEPARTMENT OF HIGHWAYS
BRIDGE BRANCH, EDMONTON

NO.	DATE	REVISIONS	BY

FILE NO. _____ HWY. NO. _____
LOCATION _____ SCALE _____ S-1012-70
STREAM _____ SHEET _____ OF _____