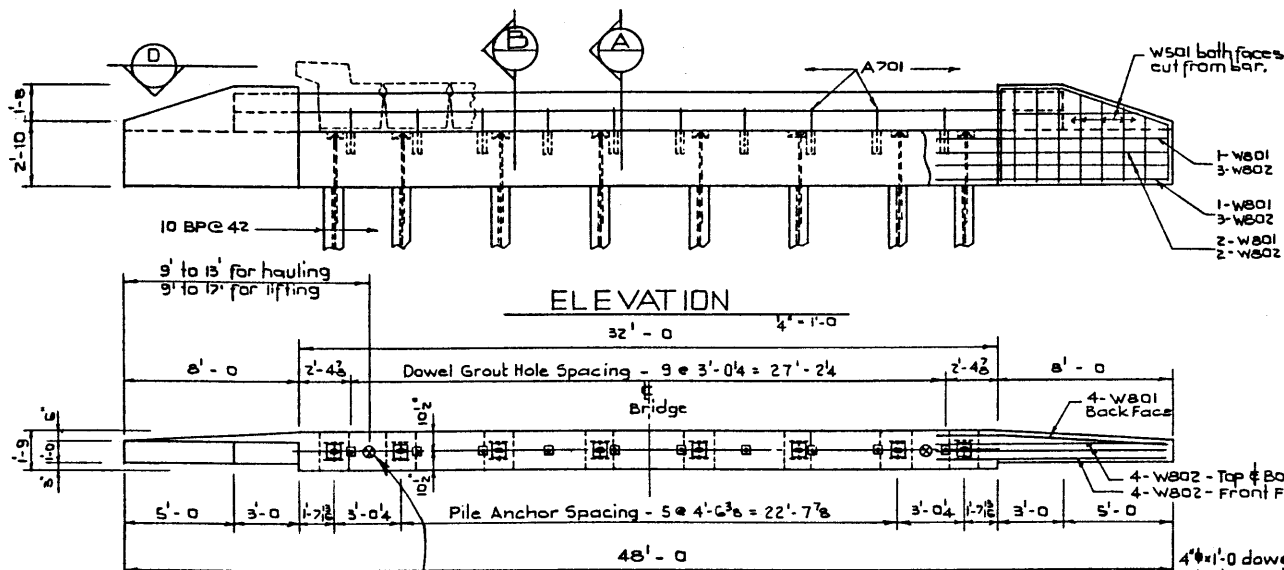


DESIGNED BY SHIK LEE DATE July 19 70
 DETAILED BY L. Kohlmann DATE July 19 70
 CHECKED BY R. J. J. DATE Jan. 15 19 71



BAR LIST — 1 Abutment 0° skew

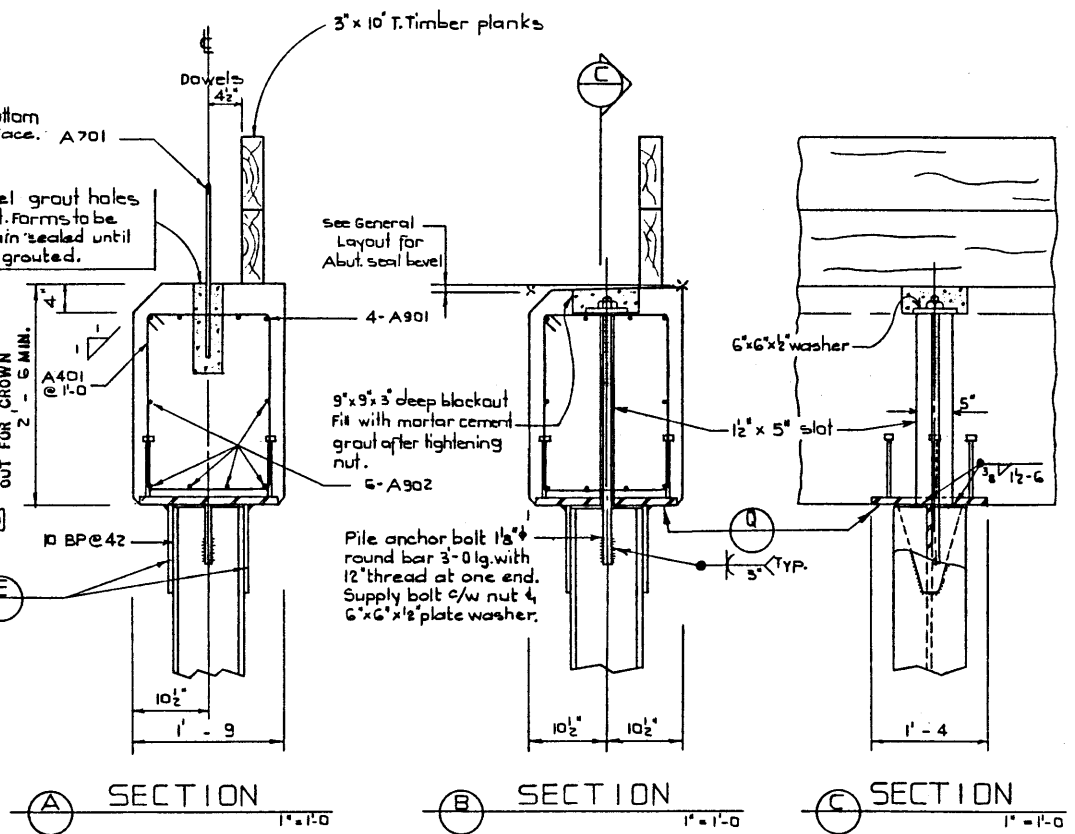
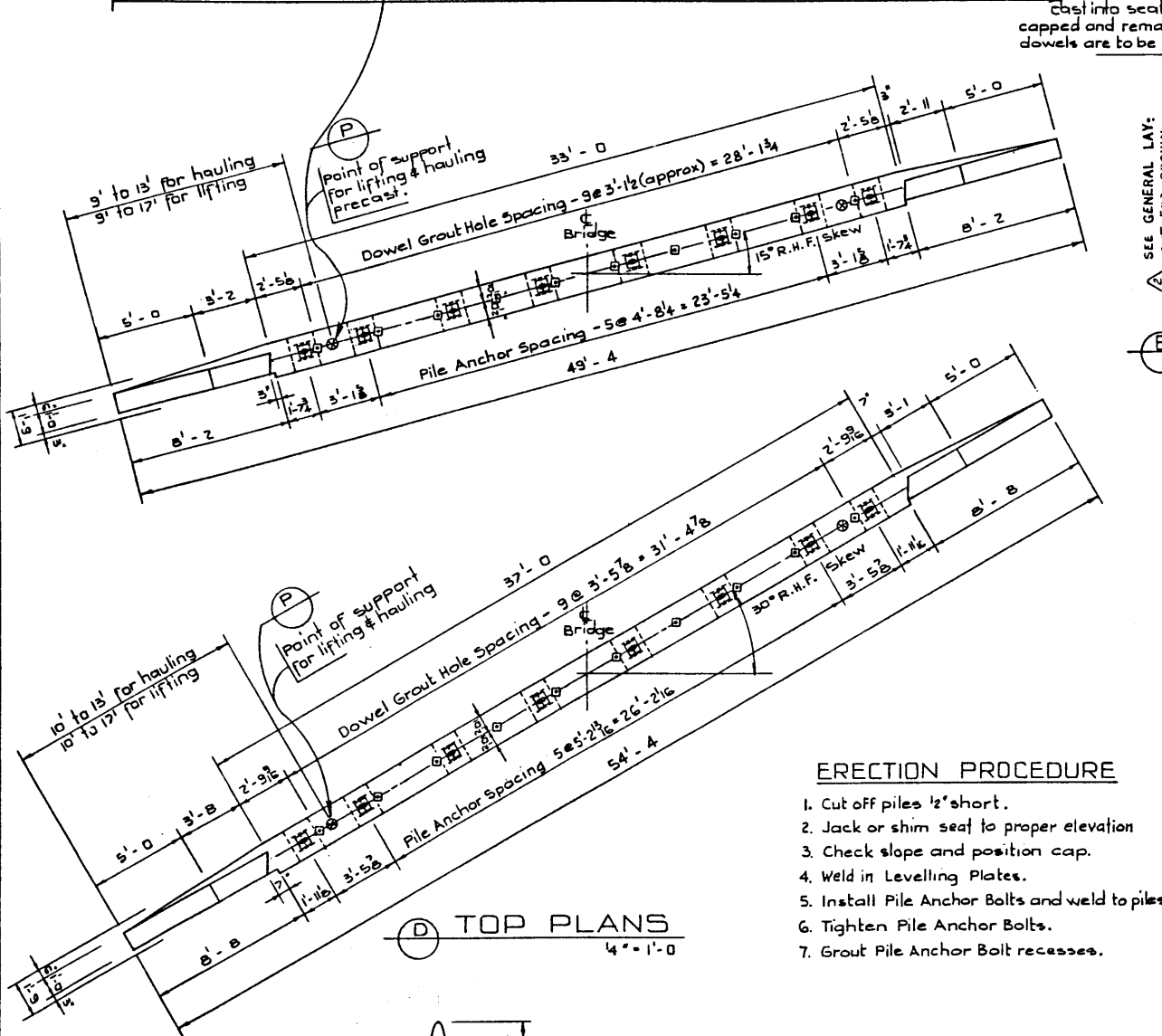
MARK	SIZE	NO	TYPE	"X"	"Y"	LENGTH	WEIGHT
A 401	4	33	A			7'-8	169
A 901	9	4	B	31'-8		34'-2	464
A 701	7	10	Sfr.			2'-4	48
A 902	9	6	Sfr.			31'-8	646
W 801	8	8	C	7'-10		10'-11	233
W 802	8	16	Sfr.			10'-11	466
W 501	5	6	Sfr.			40'-0	250
Total lbs:							2276

BAR LIST — 1 Abutment 15° skew

MARK	SIZE	NO	TYPE	"X"	"Y"	LENGTH	WEIGHT
A 401	4	34	A			7'-8	174
A 901	9	4	B	32'-8		35'-2	478
A 701	7	10	Sfr.			2'-4	48
A 902	9	6	Sfr.			32'-8	666
W 801	8	8	C	8'-0		11'-1	236
W 802	8	16	Sfr.			11'-1	473
W 501	5	6	Sfr.			40'-0	250
Total lbs:							2325

BAR LIST — 1 Abutment 30° skew

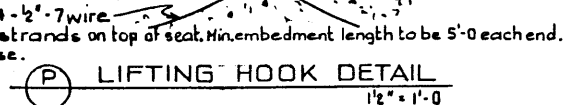
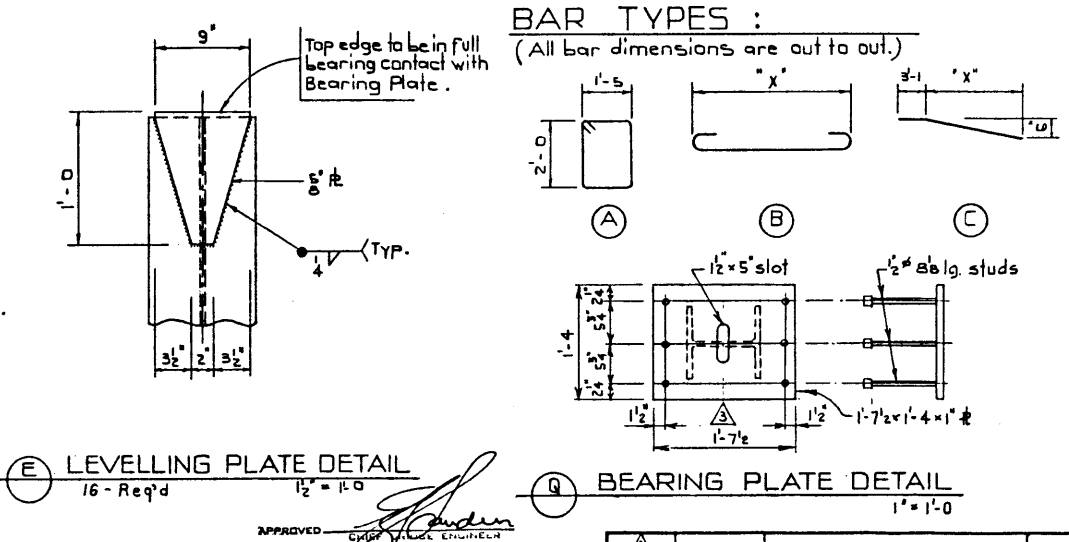
MARK	SIZE	NO	TYPE	"X"	"Y"	LENGTH	WEIGHT
A 401	4	38	A			7'-8	195
A 901	9	4	B	36'-8		39'-2	533
A 701	7	10	Sfr.			2'-4	48
A 902	9	6	Sfr.			36'-8	748
W 801	8	8	C	8'-6		11'-7	247
W 802	8	16	Sfr.			11'-7	495
W 501	5	6	Sfr.			40'-0	250
Total lbs:							2516



GENERAL NOTES :

- Concrete shall be of standard weight aggregate with a maximum size of 3/4". Minimum compressive strength shall be 4000 p.s.i. at 28 days. Air entrainment shall be not less than 5%. Units are to conform to the requirements of the Bridge Branch Specifications for Manufacture of Precast Concrete Units, B - 191-64.
- All reinforcing to have a 2" clear cover unless otherwise noted.
- All surfaces except bottom and fill side of wingwalls and seat to be given a Class 5 Finish.
- All exposed corners to have 3/4" chamfer or fillet unless otherwise noted.
- Bearing seat and wingwalls to be plant cast in a single unit.
- Piles shall be driven to the elevations shown on the General Layout or to a bearing value of 30 tons when the capacity is estimated by a bearing formula.
- All welding shall conform to A.W.S. Specification. When temperature is below 32°F, preheat the base metal to at least 200°F. for 3" both laterally and in advance of the welding. Welding shall not be done when the temperature is lower than 0°F. unless protection is provided for the operator and the enclosure is heated to at least 70°F.
- Precast abutment to be in upright position and supported at points indicated at all times.
- Weight of Precast Abutment:
 - 0° skew - 33 K
 - 15° skew - 34 K
 - 30° skew - 36 K
- Neoprene bearing pads:
 - 0° skew - 9' x 8' x 32'-0, 60 Hardness
 - 15° skew - 9' x 8' x 33'-0, 60 Hardness
 - 30° skew - 9' x 8' x 37'-0, 60 Hardness
- All requirements of the Bridge Branch Spec. for the Supply of Structural Steel for Bridges. (Spec. No. B187-64.)
- All Steel shall meet CSA. G40.12. or A.S.T.M. A 36.
- Top of Steel H Piles to the bottom of 2' x 5' trench; bearing plates shall receive 2 coats of primer in the field. Primer shall conform to CGSB. Spec. 1-GP-16GAType III and shall have a dry thickness of 1.5 to 2.5 mils. Before painting, all steel shall be sandblasted in accordance with SSPC. - 5P-6-63 T. of Steel Structure Painting Council. - Painting shall not commence until approval of the cleaning has been obtained from the Engineer.

- ERECTION PROCEDURE**
1. Cut off piles 1/2" short.
 2. Jack or shim seat to proper elevation
 3. Check slope and position cap.
 4. Weld in Levelling Plates.
 5. Install Pile Anchor Bolts and weld to piles.
 6. Tighten Pile Anchor Bolts.
 7. Grout Pile Anchor Bolt recesses.



REVISIONS

NO.	DATE	DESCRIPTION	BY
1	Sept. 3/71	Bearing Plate from 1'-5"	T.B.
2	Aug. 9/71	Crown Added	
3	Jan. 14/71	General Revisions	R.G.G.

STANDARD TYPE M BRIDGE
 27' ROADWAY, R.H.F. SKEW
 ABUTMENT

GOVERNMENT OF THE PROVINCE OF ALBERTA
 DEPARTMENT OF HIGHWAYS AND TRANSPORT
 BRIDGE BRANCH, EDMONTON

FILE NO. _____ HWY. NO. _____ DWG. NO. _____
 LOCATION _____ SCALE _____ S-1015
 STREAM _____ SHEET _____ OF _____

RECORDS CENTRE
 100-10-10-10-10