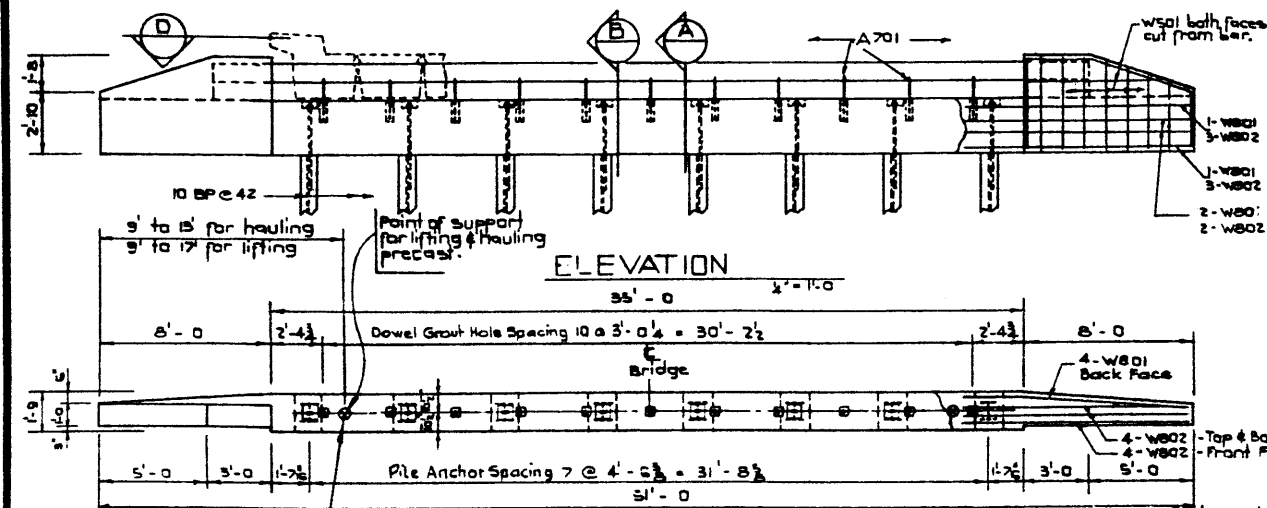


DESIGNED BY SHUK LEE DATE June 18 70  
 DETAILED BY L. Kahlmann DATE June 18 70  
 CHECKED BY [Signature] DATE Jan. 15 71



BAR LIST — Abutment 0° Skew

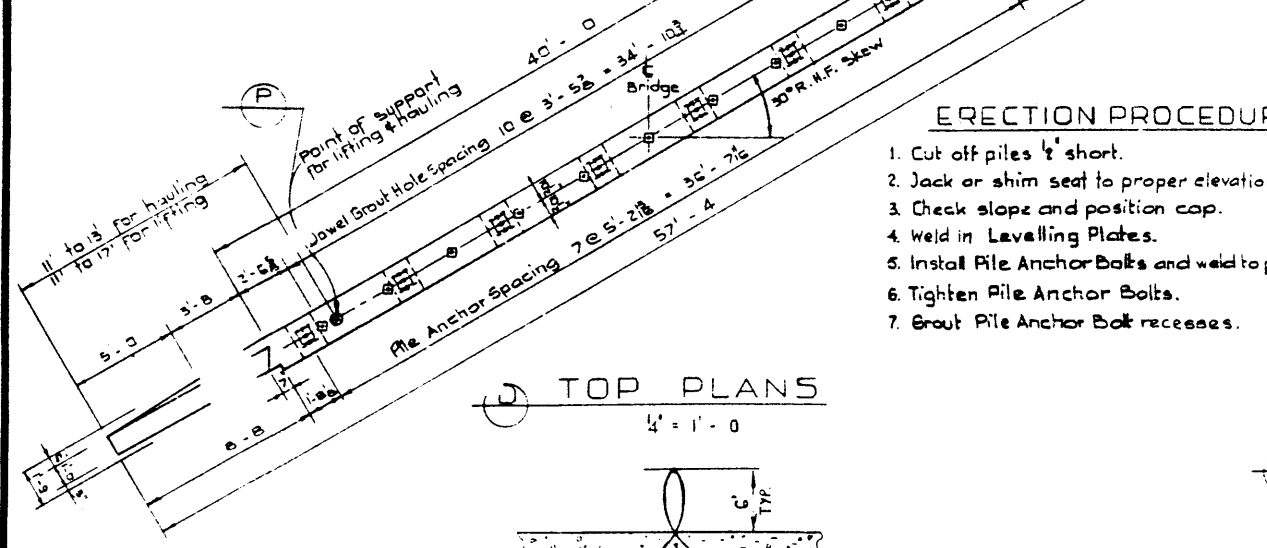
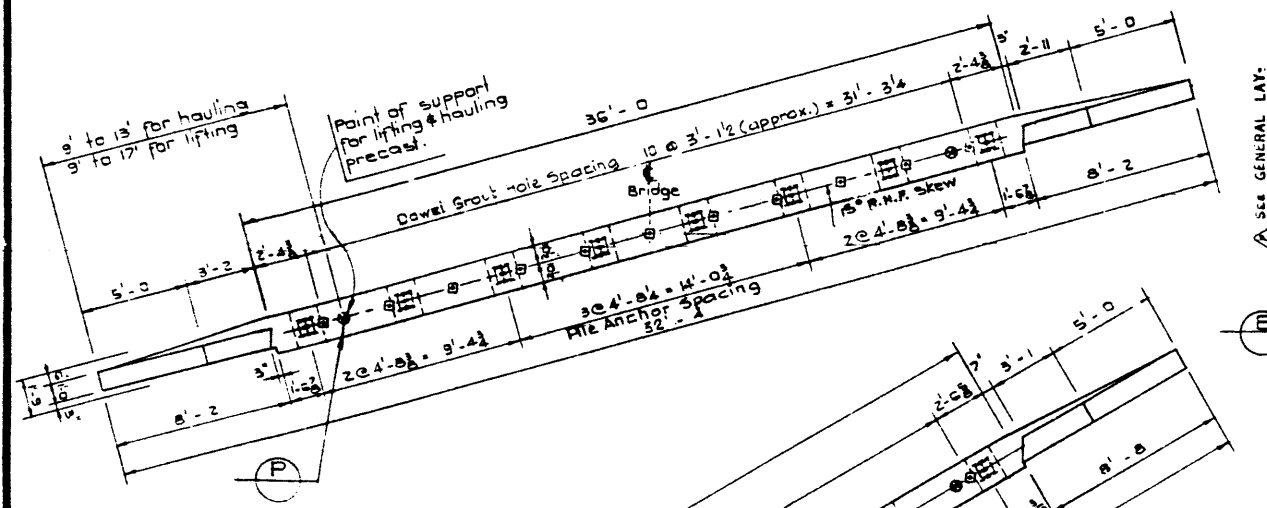
MARK	SIZE	NO	TYPE	"X"	"Y"	LENGTH	WEIGHT
A401	4	36	A			7'-8	164
A801	8	4	B	34'-8		37'-2	506
A701	7	11	str.			2'-4	52
A902	9	6	str.			34'-8	767
W801	8	8	C	7'-10		10'-11	258
W802	8	16	str.			10'-11	456
W501	5	5	str.			40'-0	250
Total lbs.							2,398

BAR LIST — Abutment 15° Skew

MARK	SIZE	NO	TYPE	"X"	"Y"	LENGTH	WEIGHT
A401	4	37	A			7'-8	169
A301	8	4	B	35'-8		38'-2	519
A701	7	11	str.			2'-4	52
A902	9	6	str.			35'-8	726
W801	8	8	C	8'-0		11'-1	237
W802	8	16	str.			11'-1	473
W501	5	5	str.			40'-0	250
Total lbs.							2,448

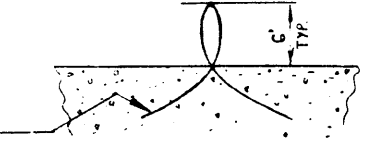
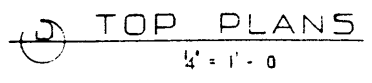
BAR LIST — Abutment 30° Skew

MARK	SIZE	NO	TYPE	"X"	"Y"	LENGTH	WEIGHT
A401	4	41	A			7'-8	219
A901	9	4	B	38'-8		42'-2	573
A701	7	11	str.			2'-4	52
A902	9	6	str.			38'-8	833
W801	8	8	C	8'-8		11'-7	287
W802	8	16	str.			11'-7	493
W501	5	5	str.			40'-0	250
Total lbs.							2,656

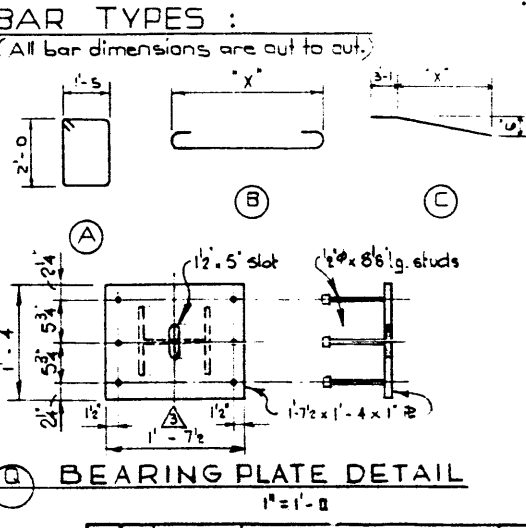
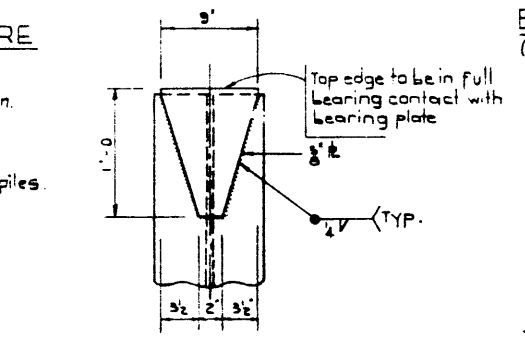
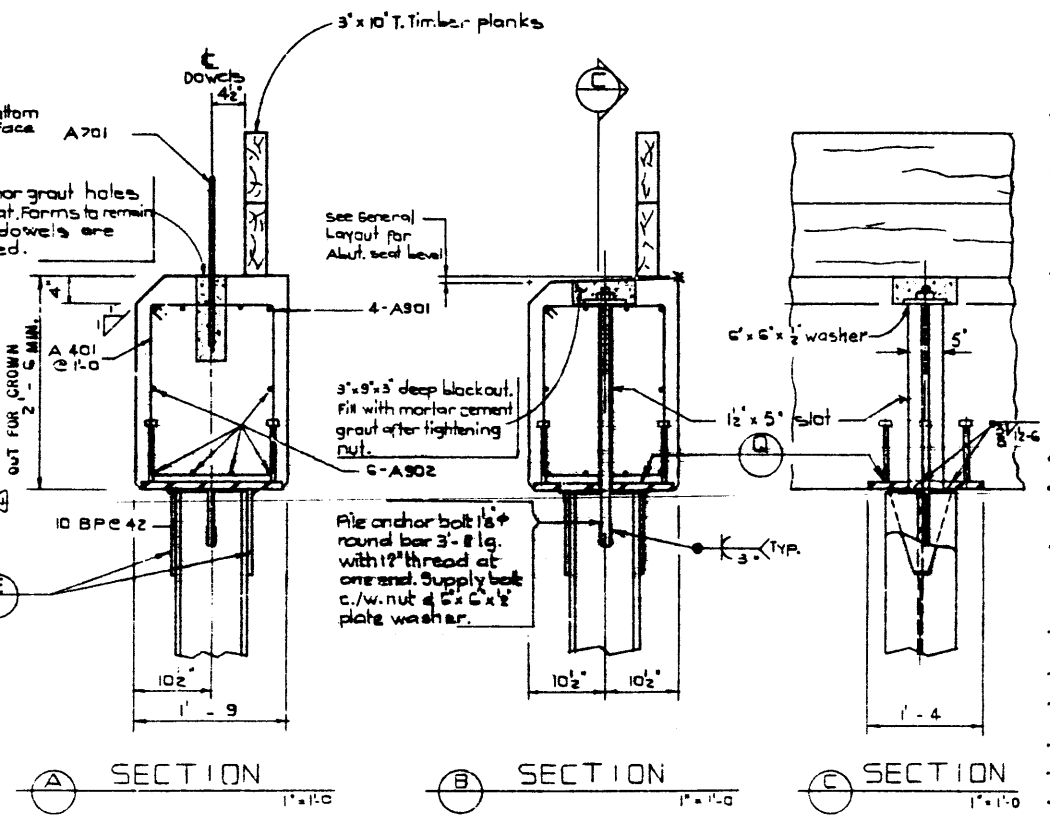


**ERECTION PROCEDURE**

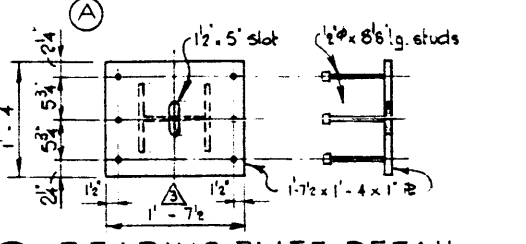
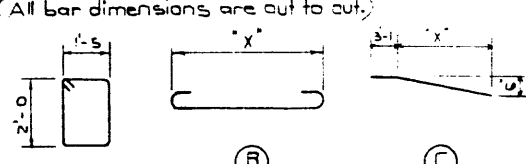
1. Cut off piles 1/2" short.
2. Jack or shim seat to proper elevation.
3. Check slope and position cap.
4. Weld in Levelling Plates.
5. Install Pile Anchor Bolts and weld to piles.
6. Tighten Pile Anchor Bolts.
7. Grout Pile Anchor Bolt recesses.



Lifting hooks 4 - 1/2" x 7 wire prestressing strands on top of seat. Min embedment length to be 5'-0" each and. Burn off after use.



**BAR TYPES :**



- GENERAL NOTES :**
- All requirements of the Bridge Branch Specification for the Supply of Structural Steel for Bridges. (Specification No. 8100-64) shall be met.
  - All welding shall conform to A.S.T.M. Specification. When temperature is below 32°F protect the base metal to at least 200°F for 3" both laterally and in advance of the welding. Welding shall not be done when the temperature is lower than 6°F unless protection is provided for the operator and the enclosure is heated to at least 70°F.
  - Painting Specifications: Top of Steel H Piles to the bottom of 2' x 5' trench and bearing plates shall receive 2 coats of primer in the field. Primer shall conform to CSSB Spec 1-6P-166A Type III and shall have a dry thickness of 1.5 to 2.5 mils. Before painting, all steel shall be sandblasted in accordance with SSPC-SP-6-63 T of the Steel Structures Painting Council. Painting shall not commence until approval of the cleaning has been obtained from the Engineer.
  - All steel shall meet A.S.T.M. A36 or CSA B40.12.
  - Piles shall be driven to elevations shown on General Layout or to a bearing value of 30 tons when bearing capacity is determined by a bearing formula.
  - Concrete shall be of standard weight aggregate with a maximum size of 3/4". Minimum compressive strength shall be 4000 p.s.i. at 28 days. All reinforcement shall be not less than #2. Bolts are to conform to the requirements of the Bridge Branch Specifications for Manufacture of Precast Concrete Units, B-191-64.
  - Precast abutment to be in upright position and supported at points indicated at all times.
  - All exposed corners to have 3/4" fillet or chamfer.
  - All concrete surfaces except bottom and fill side of wingwalls and seat to be given a Class 5 finish.
  - All reinforcing steel shall have 2" clear cover unless otherwise noted.
  - Bearing seat and wingwalls shall be plant cast in a single unit.
  - Neoprene bearing pads:
    - 0° skew - 9" x 3/8" x 35'-0, 60 Hardness
    - 15° skew - 9" x 3/8" x 36'-0, 60 Hardness
    - 30° skew - 9" x 3/8" x 40'-0, 60 Hardness.
  - Weight of precast pier caps:
    - 0° skew - 35 kips
    - 15° skew - 36 kips
    - 30° skew - 38 kips.

REVISIONS

NO.	DATE	DESCRIPTION	BY
1	Sept. 3/71	Bearing Plate from 1'-9"	T.B
2	Aug. 9/71	Crown Added	T.B
3	Jan 14/71	General Revisions	T.B

**STANDARD TYPE M BRIDGE**  
**30' ROADWAY, R.H.F. SKEW**  
**ABUTMENT**

GOVERNMENT OF THE PROVINCE OF ALBERTA  
 DEPARTMENT OF HIGHWAYS AND TRANSPORT  
 BRIDGE BRANCH, EDMONTON

FILE NO. \_\_\_\_\_ HWY. NO. \_\_\_\_\_ DWS. NO. \_\_\_\_\_  
 LOCATION \_\_\_\_\_ SCALE \_\_\_\_\_ SHEET \_\_\_\_\_ OF \_\_\_\_\_  
 STREAM \_\_\_\_\_ OF \_\_\_\_\_ **5-1016**

APPROVED [Signature] [Signature] 7/71