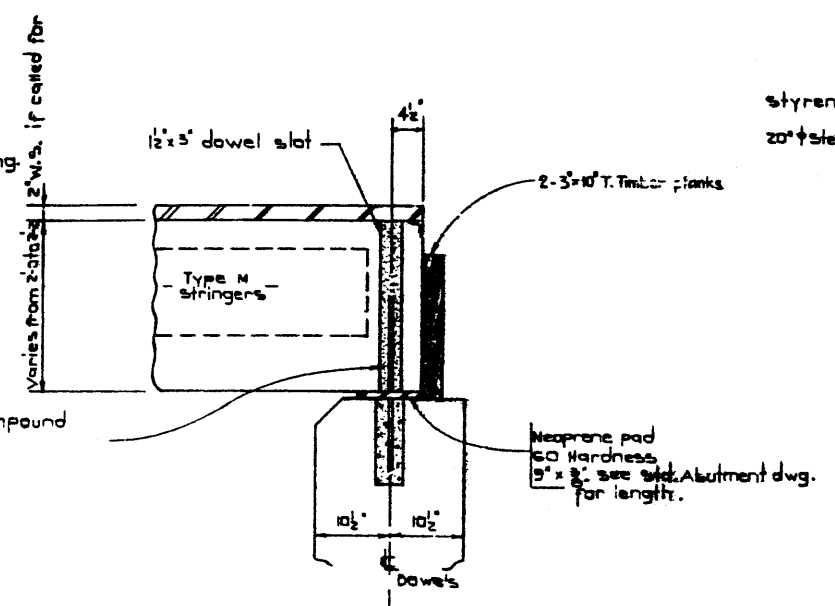
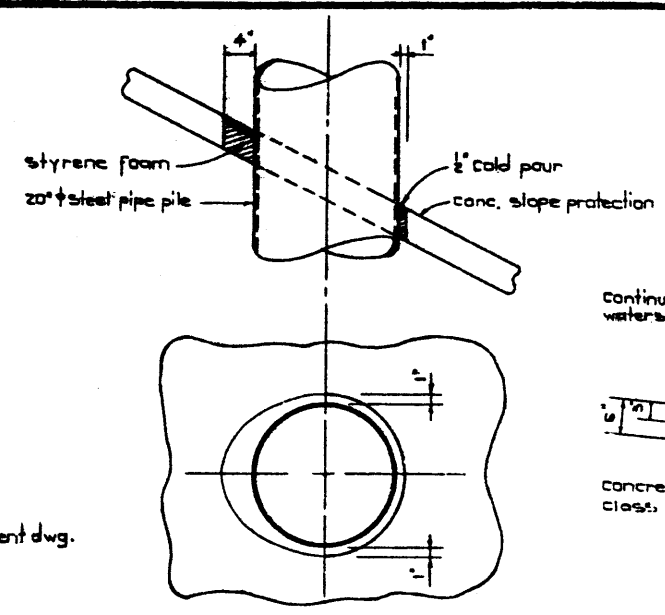


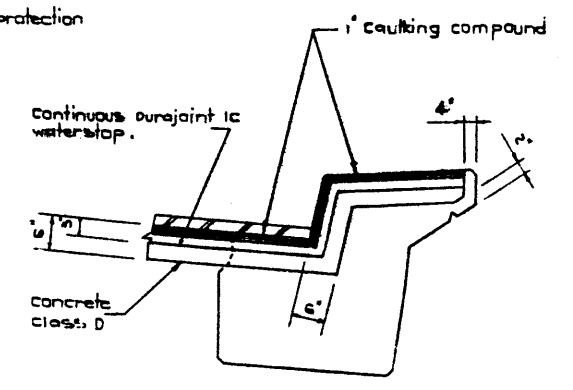
**BEARING & DECK JOINT AT PIERS**  
(Section perpendicular to joint.) 1" = 1'-0"



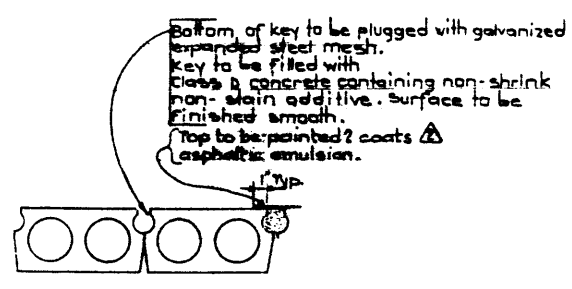
**BEARING & DECK JOINT AT ABUT'S**  
(Section perpendicular to joint.) 1" = 1'-0"



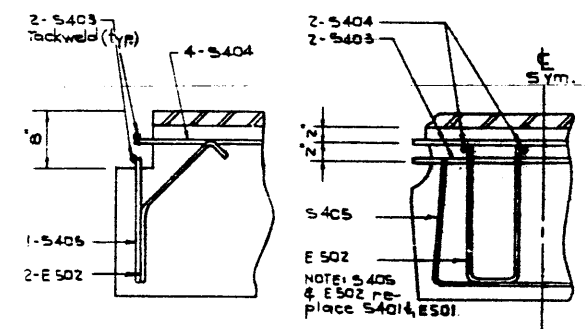
**SLOPE PROTECTION BLOCKOUT**  
1" = 1'-0"



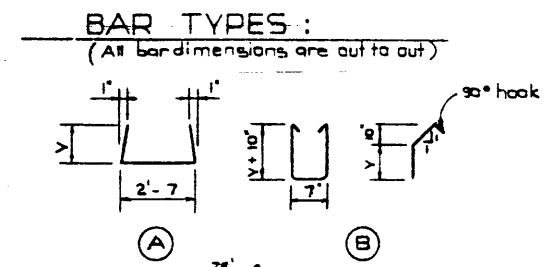
**PIER JOINT**  
1/2" = 1'-0"



**CONNECTOR DETAIL (TYP.)**  
N.T.S.



**STRINGER BLOCKOUT REINFORCEMENT**  
1" = 1'-0"



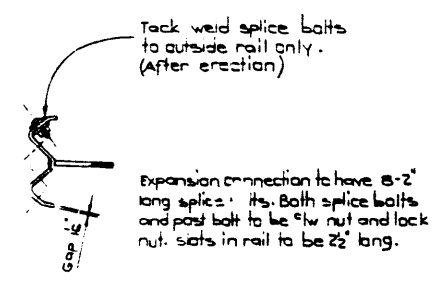
**BAR TYPES:**  
(All bar dimensions are out to out)

BAR LIST For 1 Blockout - up to 55' length							
MARK	SIZE	NO	TYPE	"X"	"Y"	LENGTH	WEIGHT
S 405	4	2	Sfr.			3'-11	4
S 404	4	4	Sfr.			1'-6	4
S 406	4	1	A	1'-7		3'-9	4
E 502	5	2	B	1'-0		7'-3	15
Total lbs. =							28

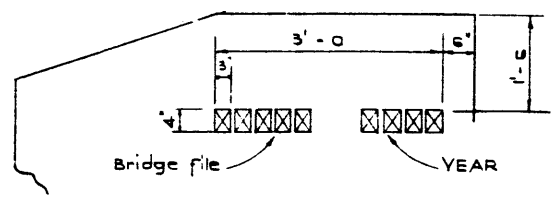
BAR LIST For 1 Blockout - 55' length							
MARK	SIZE	NO	TYPE	"X"	"Y"	LENGTH	WEIGHT
S 405	4	2	Sfr.			2'-11	4
S 404	4	4	Sfr.			1'-6	4
S 406	4	1	A	1'-8		3'-11	4
E 502	5	2	B	1'-1		6'-7	14
Total lbs. =							26

BAR LIST For 1 Blockout - 60' length							
MARK	SIZE	NO	TYPE	"X"	"Y"	LENGTH	WEIGHT
S 405	4	2	Sfr.			2'-11	4
S 404	4	4	Sfr.			1'-6	4
S 406	4	1	A	1'-9		6'-1	4
E 502	5	2	B	1'-2		6'-3	14
Total lbs. =							26

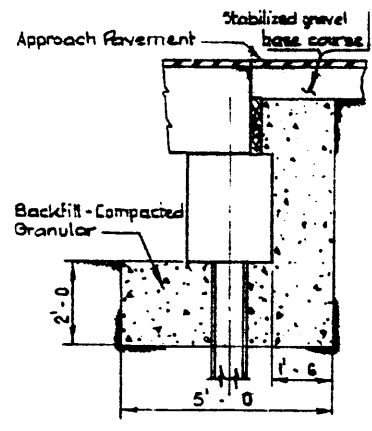
Bars to be supplied by stringer fabricator.  
Type M stringers to be supplied with protection angle at abutments and blockouts at piers as shown.



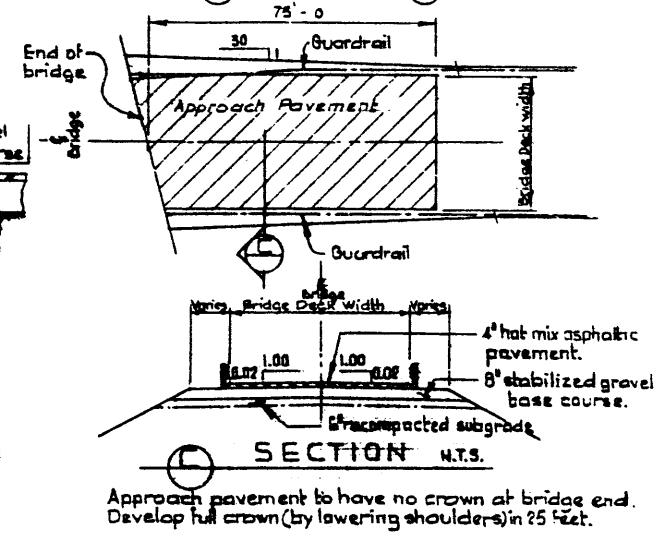
**EXPANSION CONNECTION**  
N.T.S.



**BRIDGE FILE & YEAR**  
1-req'd each abutment cap N.T.S.  
Cast an exposed face of wingwalls on left hand side.



**BACKFILL DETAIL**  
N.T.S.



Approach pavement to have no crown at bridge end. Develop full crown (by lowering shoulders) in 25 feet.

**APPROACH PAVEMENT**  
When specified. N.T.S.

DESIGNED BY: Shih LEE  
DATE: June 19 70  
CHECKED BY: L. Kohlmann  
DATE: June 19 70  
REVIEWED BY: R. J. ...  
DATE: Jan 15 71

APPROVED: [Signature]  
CIVIL ENGINEER  
May 17/71

NO.	DATE	DESCRIPTION	BY
1		As shown on sheet	SL
2	4/17/71	General Revisions	SL

**STANDARD TYPE M BRIDGE**

**MISCELLANEOUS DETAILS**

GOVERNMENT OF THE PROVINCE OF ALBERTA  
DEPARTMENT OF HIGHWAYS AND TRANSPORT  
BRIDGE BRANCH - EDMONTON

PROJECT NO. \_\_\_\_\_ HWY. NO. \_\_\_\_\_ DIST. NO. \_\_\_\_\_  
LOCATION \_\_\_\_\_ SCALE \_\_\_\_\_ SHEET \_\_\_\_\_ OF \_\_\_\_\_  
STREAM \_\_\_\_\_

5-1020