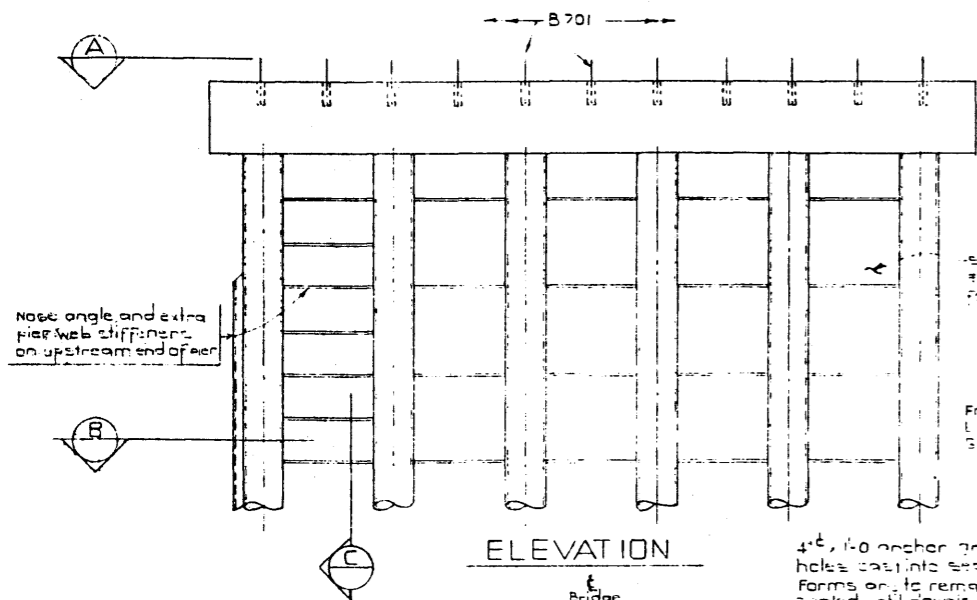


BAR LIST — Pier 0° Skew							
MARK	SIZE	NO	TYPE	X'	Y'	LENGTH	WEIGHT
B401	4	36	B			8'-4"	200
B402	4	37	C			3'-2"	76
B901	9	12	A	34'-8"		37'-2"	1516
E701	7	22	Str.			4'-0"	589
E701	7	22	Str.			2'-4"	105
E501	5	11	D	1'-9"		5'-9"	66
B403	4	2	str.			34'-6"	46
B703	7	48	str.			3'-0"	294
							Total lbs. 2,892

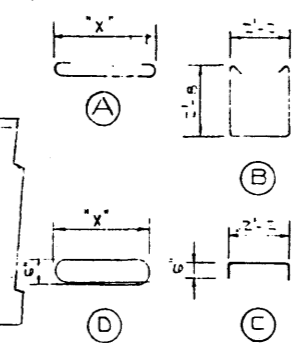
BAR LIST — Pier 15° Skew							
MARK	SIZE	NO	TYPE	X'	Y'	LENGTH	WEIGHT
B401	4	37	B			8'-4"	205
E402	4	37	C			3'-2"	78
B901	9	12	A	35'-2"		38'-2"	1567
E702	7	22	Str.			4'-0"	599
E701	7	22	Str.			2'-4"	105
E501	5	11	D	1'-9"		5'-9"	66
B403	4	2	str.			35'-8"	48
B703	7	48	str.			3'-0"	294
							Total lbs. 2,848

BAR LIST — Pier 30° Skew							
MARK	SIZE	NO	TYPE	X'	Y'	LENGTH	WEIGHT
B401	4	41	B			8'-4"	228
B402	4	41	C			3'-2"	87
B901	9	12	A	39'-8"		42'-2"	1720
E701	7	22	Str.			4'-0"	599
E701	7	22	Str.			2'-4"	105
E501	5	11	D	1'-9"		5'-9"	66
B403	4	2	str.			39'-6"	54
B703	7	48	str.			3'-0"	294
							Total lbs. 3,140



See General Layout for dimensions & elevations. Pier webs, not req'd for grade separations or railway overpasses.

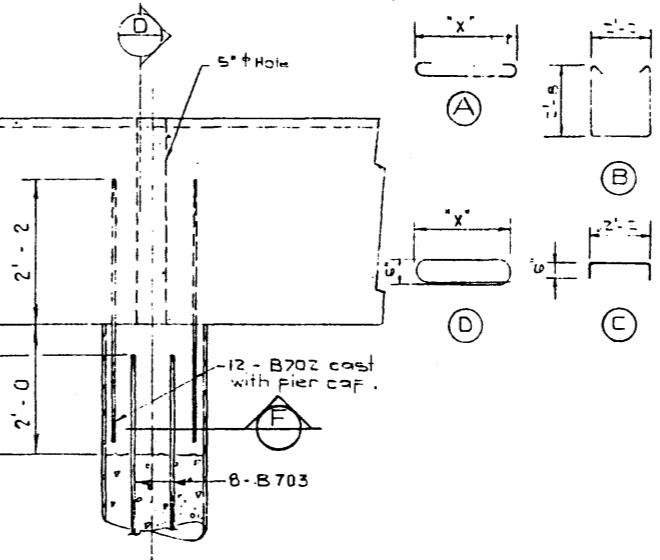
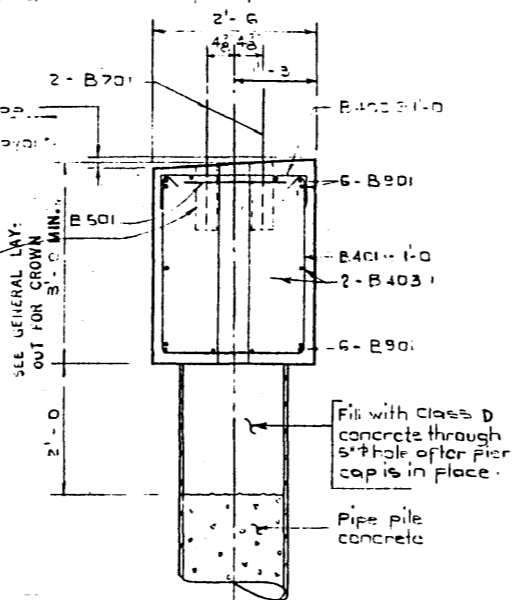
BAR TYPES :
(All dimensions are outside)



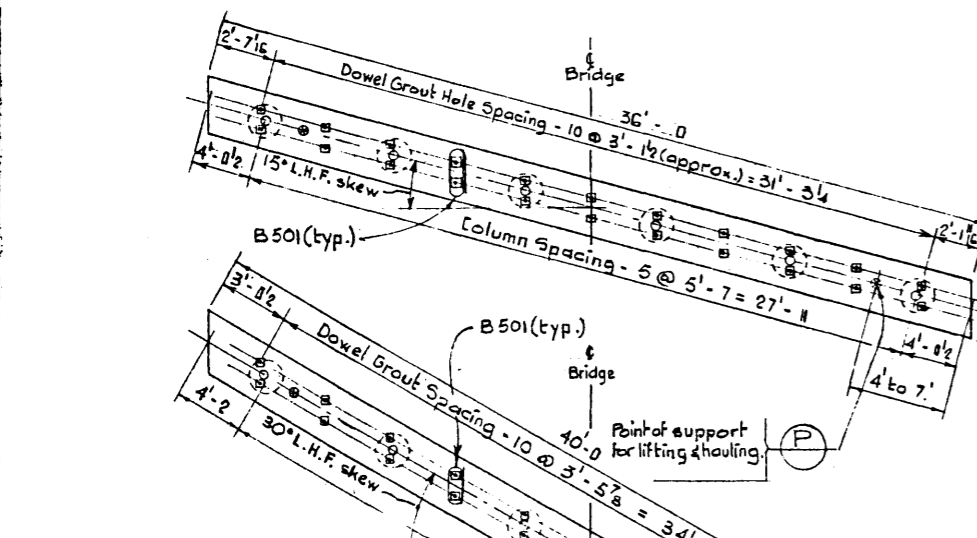
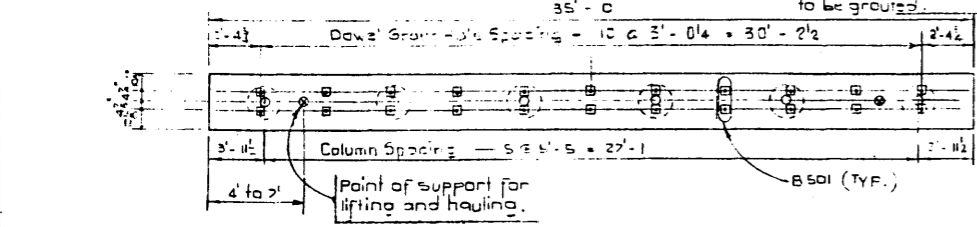
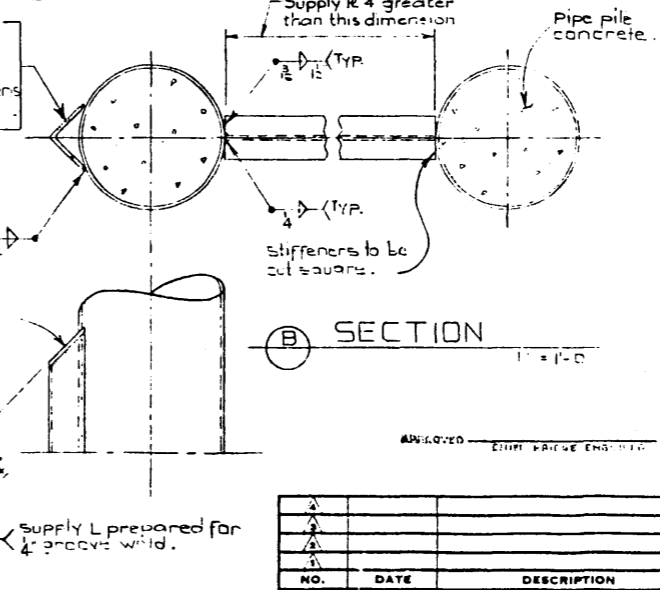
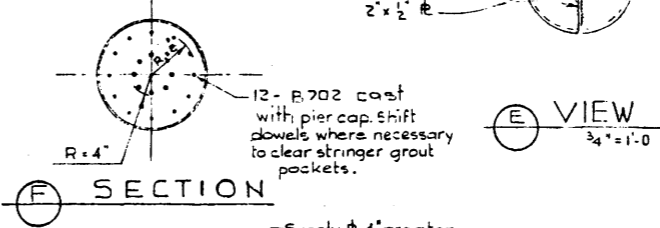
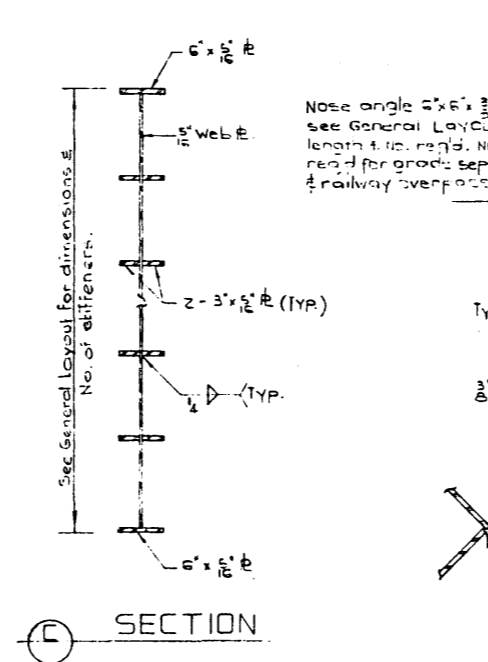
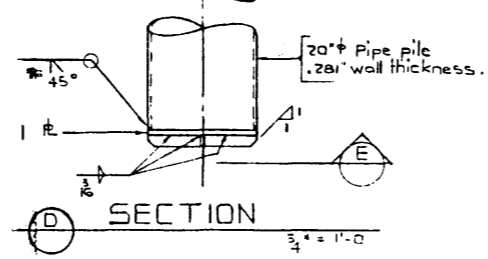
GENERAL NOTES :

- All requirements of the Bridge Branch Specification for the Supply of Structural Steel for Bridges. (Specification No. 8137-64) shall be met, except that no shop paint shall be applied to pipe piles and 6" along edges of pier webs.
- All welding shall conform to A.W.S. Specification. When temperature is below 32°F preheat the base metal to at least 200°F for 3" both laterally and in advance of the welding. Welding shall not be done when the temperature is lower than 0°F unless protection is provided for the operator and the enclosure is heated to at least 70°F.
- Painting Specification: Pier webs shall receive one coat of primer in the shop and two finish coats in the field. Pipe piles and 6" along edges of pier webs shall receive one coat of primer and two finish coats all applied in the field. Primer shall conform to CGS8 Spec 1-GP-166A Type III and shall have a dry thickness of 1.5 to 2.5 mils. Before painting, all steel shall be sandblasted in accordance with SSPC-SP-6-63 T of the Steel Structures Painting Council. Pipe piles shall be sandblasted after pier webs have been installed. Painting shall not commence until approval of the cleaning has been obtained from the Engineer.
- Steel for pier webs shall meet A.S.T.M. A36 or CSA G40.12.
- 20" pipe piles shall be driven to elevations shown on General Layout or to the following bearing values when bearing capacity is determined by a bearing formula.

Span Length (Ft.)	35	40	45	50	55	60
Bearing Capacity (tons)	50	55	60	60	65	70
- Concrete shall be of standard weight aggregate with a maximum size of 3/4". Minimum compressive strength shall be 4000 p.s.i. at 28 days. Air entrainment shall be not less than 5%. Units are to conform to the requirements of the Bridge Branch Specifications for Manufacture of Precast Concrete Units, B-191-64.
- Pier caps shall be supported on top or bottom surface at points indicated during hauling.
- All exposed corners to have 3/4" fillet or chamfer.
- All concrete surfaces except top of pier cap shall be given a class 5 finish. Top of pier cap to be class 1.
- All reinforcing steel shall have 2" clear cover unless otherwise noted.
- Pier cap shall be plant cast in a single unit.
- Neoprene bearing pads:
 - 0° skew - 18" x 3/8" x 75'-0, 60 Hardness
 - 15° skew - 18" x 3/8" x 30'-0, 60 Hardness
 - 30° skew - 18" x 3/8" x 40'-0, 60 Hardness
- Weight of precast pier caps:
 - 0° skew - 39.4 kips
 - 15° skew - 40.5 kips
 - 30° skew - 45.0 kips

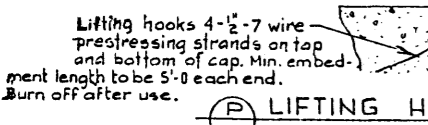
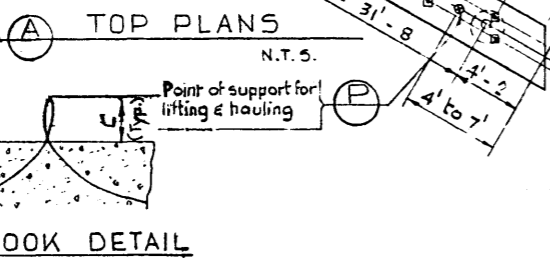


PART ELEVATION



ERECTION PROCEDURE

1. Drive pipe piles.
2. Realign pipe piles if necessary.
3. Cut off pipe piles.
4. Fill pipe piles to 2' below top with pipe pile concrete.
5. Place cap.
6. Check for slope and position of cap.
7. Adjust cap if necessary by shimming.
8. Pour to 2' of pipe pile through hole in cap.
9. Clean up junction of pile & cap if necessary.



DESIGNED BY SHUK LEE DATE April 19 71
 CHECKED BY L. Kohlmann DATE April 19 71

REVISIONS			
NO.	DATE	DESCRIPTION	BY

STANDARD TYPE M BRIDGE
 30' ROADWAY, L.H.F. SKEW
 PIER

GOVERNMENT OF THE PROVINCE OF ALBERTA
 DEPARTMENT OF HIGHWAYS AND TRANSPORT
 BRIDGE BRANCH, EDMONTON

FILE NO. _____ HWY. NO. _____ DWG. NO. S-1032
 LOCATION _____ SCALE _____ SHEET _____ OF _____