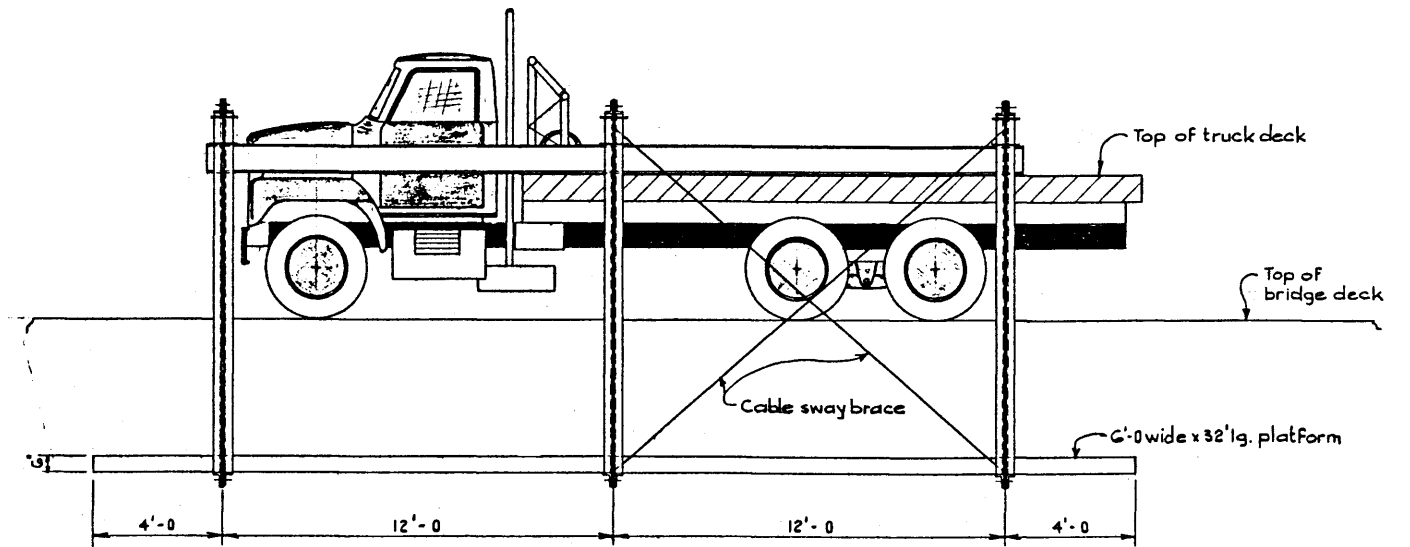


REAR VIEW  
3/4" = 1'-0"



SIDE VIEW  
3/8" = 1'-0"

GENERAL NOTES

DESIGN

- Design Loads, each frame:
  - Platforms \_\_\_\_\_ 300 lb.
  - Materials or equipment - 100 lb.
  - 2 Men \_\_\_\_\_ 370 lb.

FABRICATION OR ASSEMBLY

- All structural steel shall meet A.S.T.M. A36 or C.S.A.-G 40.12.
- All holes shall be 1/16" except as noted.
- H.T. bolts shall conform to A.S.T.M. A325.
- H.T. bolts shall be fully torqued.

FIELD USE

- Do not exceed design loads.
- Overhead position to be used with caution for localized moves around bridge site, e.g. moving off bridge at night. Dismantle scaffold for longer moves.

OCCUPATIONAL HEALTH & SAFETY DIVISION  
APPROVAL No. E-77-30.

1

APPROVED		PROVINCE OF ALBERTA DEPARTMENT OF HIGHWAYS AND TRANSPORT BRIDGE BRANCH	
CHIEF BRIDGE ENGINEER		TRUCK MOUNTED BRIDGE SCAFFOLD	
NO.	DATE	DESCRIPTION	BY
REVISIONS			
DESIGNED	DRAWN BY	DATE	CHECKED BY
R.W. Kornelsen	V. Boychuk	June 1971	
DATE	STREAM	LOCATION	HWY. NO.
SCALE	FILE NO.	SHEET	DWG. NO.
shown		1 of 1	S-1033

ALBERTA RECORDS CENTRE  
728172