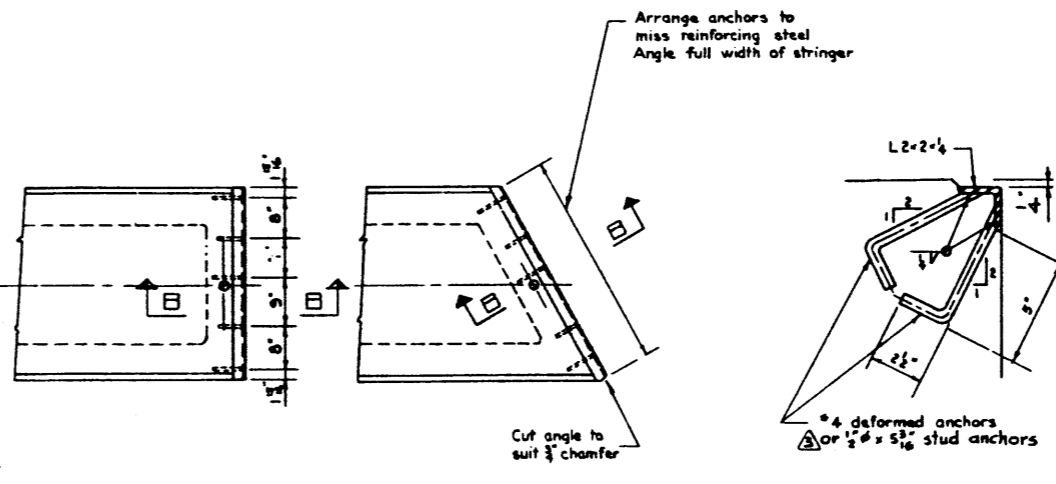


PLAN VIEW
Scale 3/4"=1'-0"

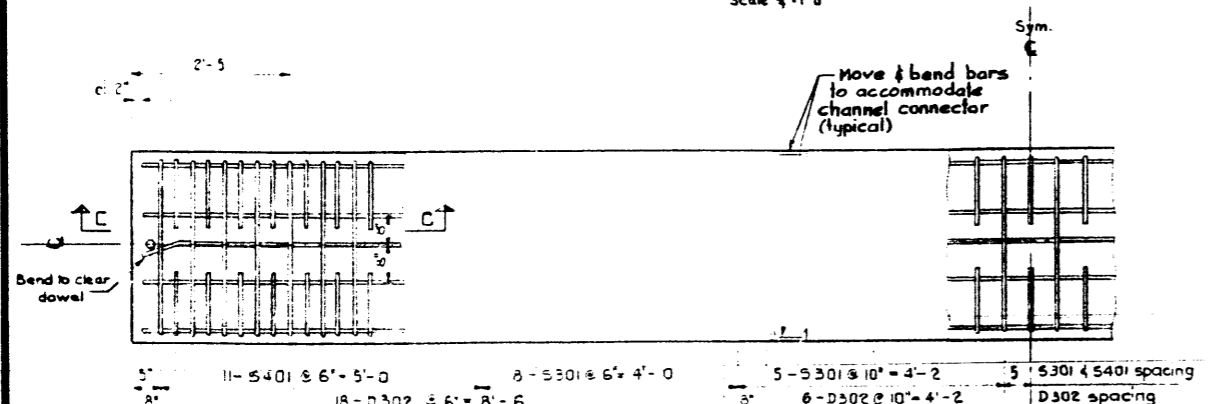


PROTECTION ANGLES
Scale 3/4"=1'-0"

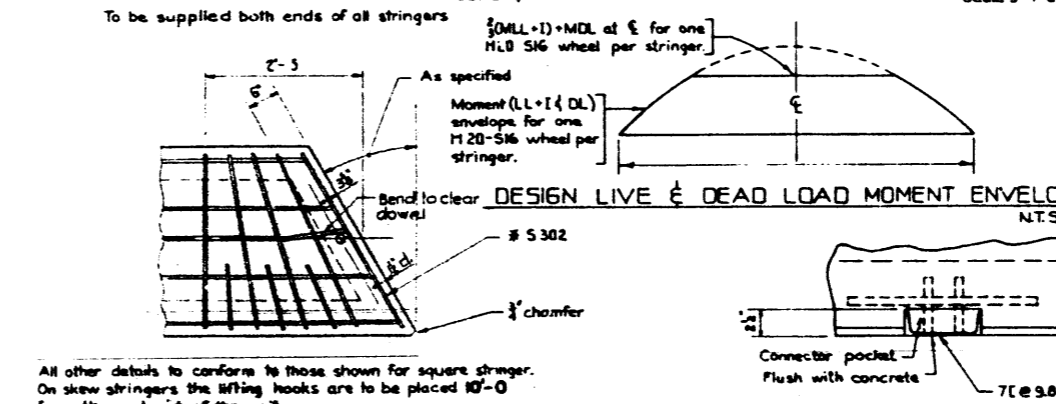
SECTION B-B
Scale 3"=1'-0"

BAR LIST						
MARK	SIZE	NO.	TYPE	X	LENGTH	WEIGHT*
D 301	3	3	Str.		27'-8"	31*
D 302	3	47	A		1'-5"	25
D 303	3	27	Str.		2'-8"	27
D 401	4	2	Str.		27'-8"	37
D 501	5	28	Str.		2'-8"	78
G 301	3	4	C		3'-4"	5
G 901	9	4	D	27'-2"	28'-5"	386
G 1001	10	4	D	27'-8"	29'-1"	501
S 301	3	26	B		9'-4"	91
S 302	3	2	E			
S 401	4	22	B		9'-4"	137

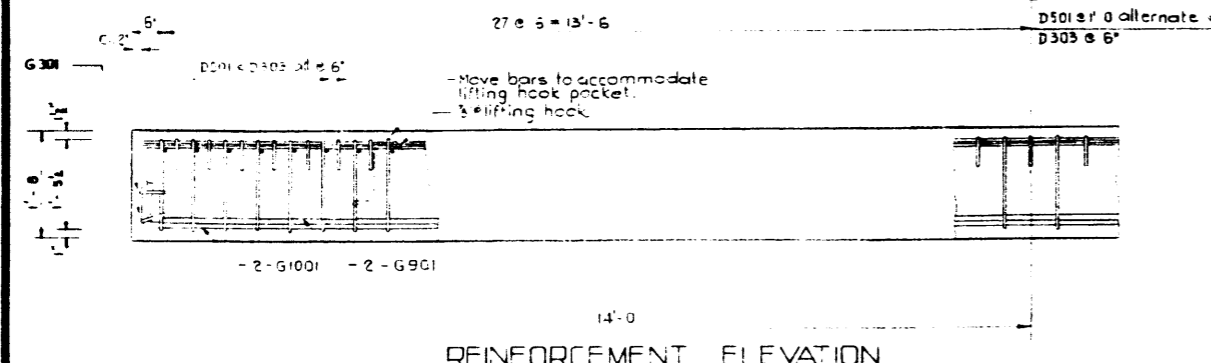
* For skewed stringer only. Total weight of unit is 1,318 lbs.



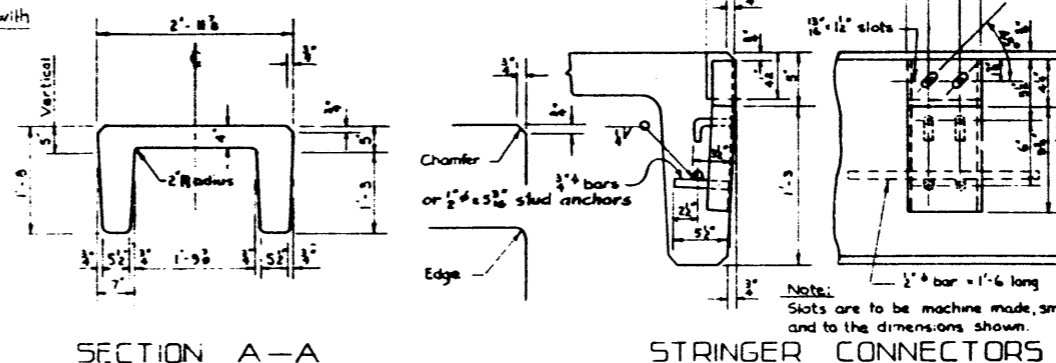
REINFORCEMENT PLAN
Scale 3/4"=1'-0"



SKREW STRINGER
Scale 3/4"=1'-0"

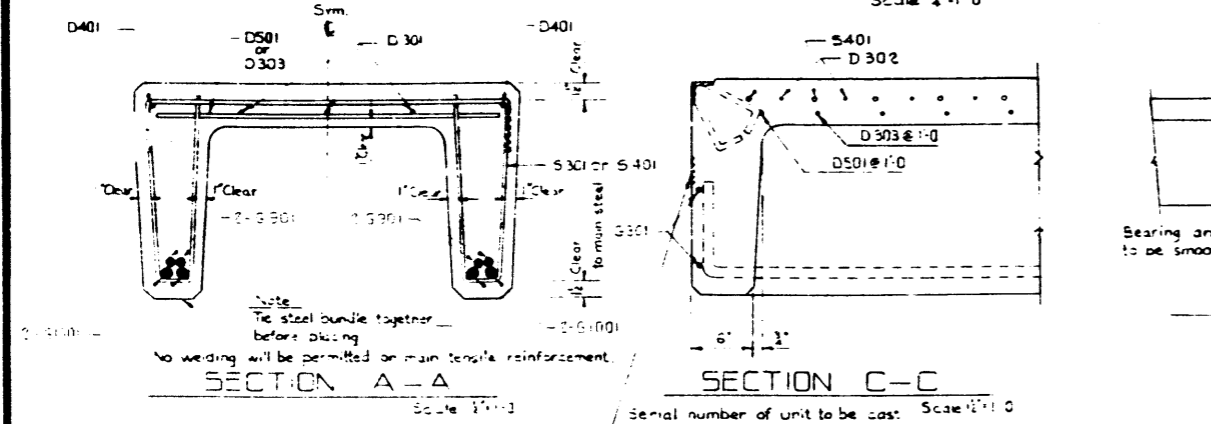


REINFORCEMENT ELEVATION
Scale 3/4"=1'-0"



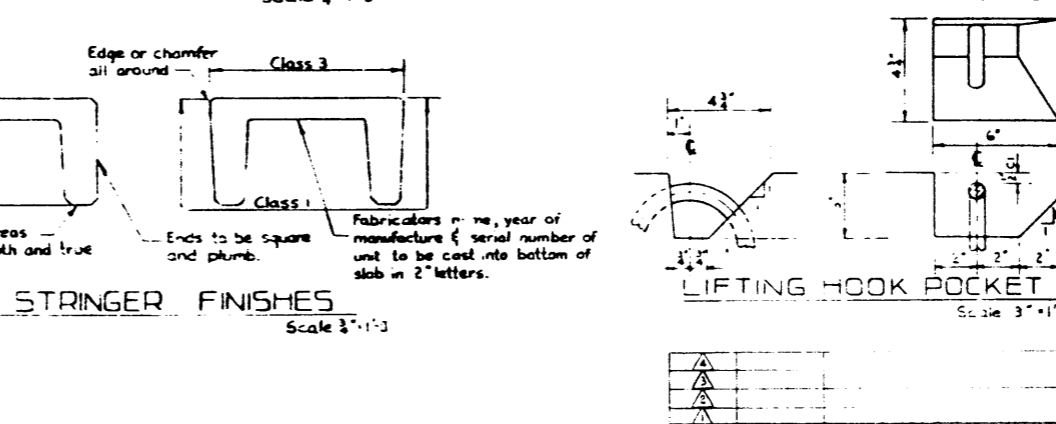
SECTION A-A
Scale 3/4"=1'-0"

STRINGER CONNECTORS
Scale 1 1/2"=1'-0"



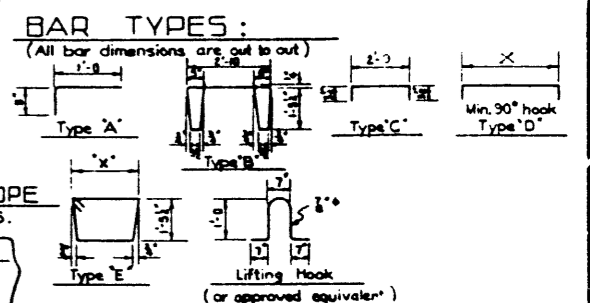
SECTION A-A
Scale 3/4"=1'-0"

SECTION C-C
Scale 1 1/2"=1'-0"



STRINGER FINISHES
Scale 3/4"=1'-0"

LIFTING HOOK POCKET
Scale 3"=1'-0"



GENERAL NOTES:

- DESIGN: Design truck
- Dead Load - includes allowance for 2" wearing surface
- Concrete - to be standard weight aggregates with maximum aggregate size of 3/4". Minimum 28 day compressive strength to be 4000 p.s.i.

CONSTRUCTION:

- Entrained Air shall be not less than 5%
- Diameters of all bars shall conform to the recommended minimums and all hooks, unless otherwise noted shall conform to the recommended sizes detailed in the A.C.I. Manual of Standard Practice for Detailing Reinforced Concrete Structures.
- Each stringer shall have a cast chamfer of 3/4" inch.
- All acute angles on skewed stringers shall have 3/4" inch chamfer.
- Concrete shall attain at least 30% of the specified 28 day compressive strength before the units are stripped from the forms or lifted.
- Each connector is to be allowed one 3/4" x 2" H.T. bolt, one heavy hex semi finished nut and three hardened washers. (Supplied by Dept.)
- Stringers shall conform to the requirements of the Alberta Government Specifications for the Manufacture of Precast Bridge Units.

ERECTION

- Any free space between the connectors shall be filled with washers.

PRECAST CONCRETE
120,000 LB. LOADING
28 FT. SPAN TYPE 'HC'
INTERIOR STRINGER

GOVERNMENT OF THE PROVINCE OF ALBERTA
DEPARTMENT OF HIGHWAYS
BRIDGE BRANCH, EDMONTON

FILE NO. _____ REV. NO. _____ DATE _____
LOCATION _____ SCALE AS SHOWN _____
STREAM _____ SHEET _____ OF _____

NO. _____ DATE _____ DESCRIPTION _____ BY _____
REVISIONS

5-1046

DESIGNED BY J. P. L. P. E. DATE JULY 1971
 CHECKED BY M. E. L. P. S. K. DATE JULY 1971
 CHECKED BY _____ DATE _____