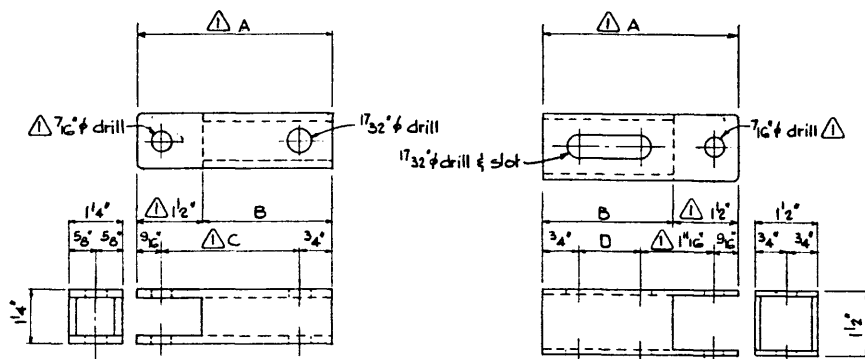
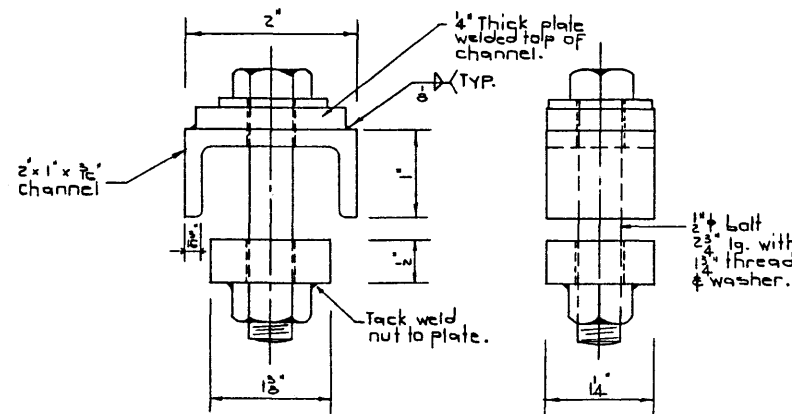


Description	A	B	C	D	No. Required
3 1/2" to 4 1/2"	4 1/2"	3"	3 3/4"	1 1/2"	8
7 1/2" to 13 1/2"	9"	7 1/2"	7 1/4"	6"	12
13 1/2" to 25"	15"	13 1/2"	13 1/4"	12"	4



Note: Spacers to be fabricated from 12 ga. sheet metal or from pre-galvanized tubing of equivalent thickness.

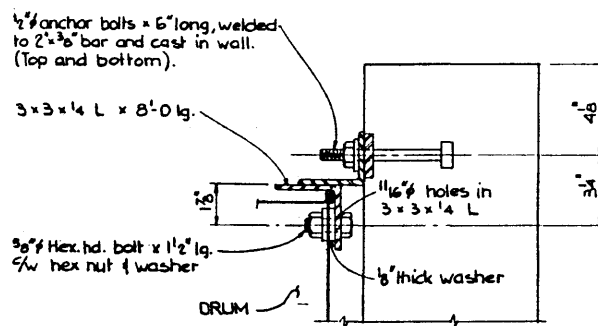
SPACER DETAILS  
 N.T.S.



DRUM CONNECTOR DETAIL  
 142 req'd N.T.S.

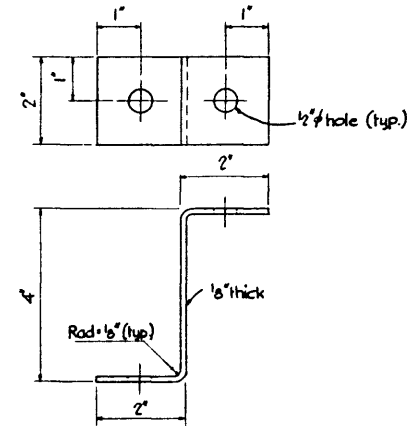
GENERAL NOTES

- Slab and wall concrete to be Class 'B'.
- All exposed corners to have 3/4" chamfer or fillet.
- Steel drums to be 45 imp. gals. 18 ga. drums.
- Drums to be given one coat of primer and two finish coats of paint.
- Primer shall conform to C.G.S.B. Spec. I-GP-166A Type III and shall have a dry thickness of 1.5 to 2.5 mils.
- Drums to be cleaned of heavy rust before painting.
- Cables to be 3/4" galvanized wire rope with a nominal breaking strength of 46,000 pounds.
- Cable clamps or end fittings used to anchor cables to be able to develop the breaking strength of the wire rope.
- Cables to be pre-tensioned before final anchorage.
- All steel parts and components used in cushion assembly except for the steel drums and cables to be hot dip galvanized after fabrication.
- Galvanizing shall conform to A.S.T.M. Specification A123 or A153.
- All quantities specified are for one assembly only.
- All plates, sections, and others steel shapes used in assembly to be conform to A.S.T.M. Specification A36 or C.S.A. G 40-12.

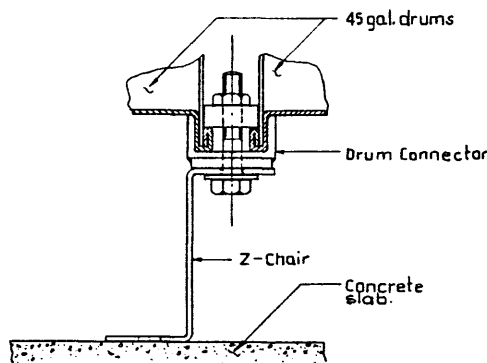


Similar detail at bottom of drum.

SECTION (TYP.)  
 3' x 1'-0"



Z CHAIRS  
 26 req'd. 1" x 2"



DRUM CONNECTOR WITH Z CHAIR  
 1' x 2'

DESIGNED R.G. Quirton I.R.W. Lyne		DRAWN BY I. Stanley		DATE Sept. 71		CHECKED BY		DATE		STREAM		LOCATION		HWY. NO.		SCALE as shown		FILE NO.		SHEET 2 of 2		DWG. NO. 5-1053	
APPROVED  CHIEF BRIDGE ENGINEER DATE Oct. 7/71												PROVINCE OF ALBERTA DEPARTMENT OF HIGHWAYS AND TRANSPORT BRIDGE BRANCH STEEL DRUM CRASH CUSHION SHEET # 2											