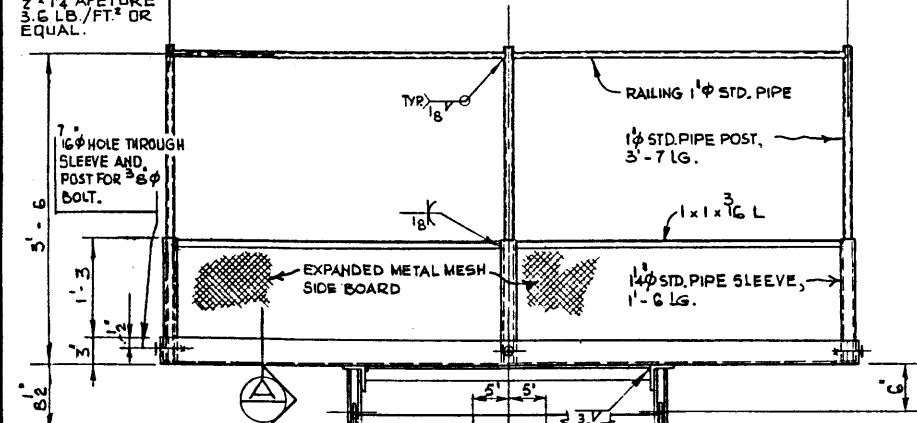
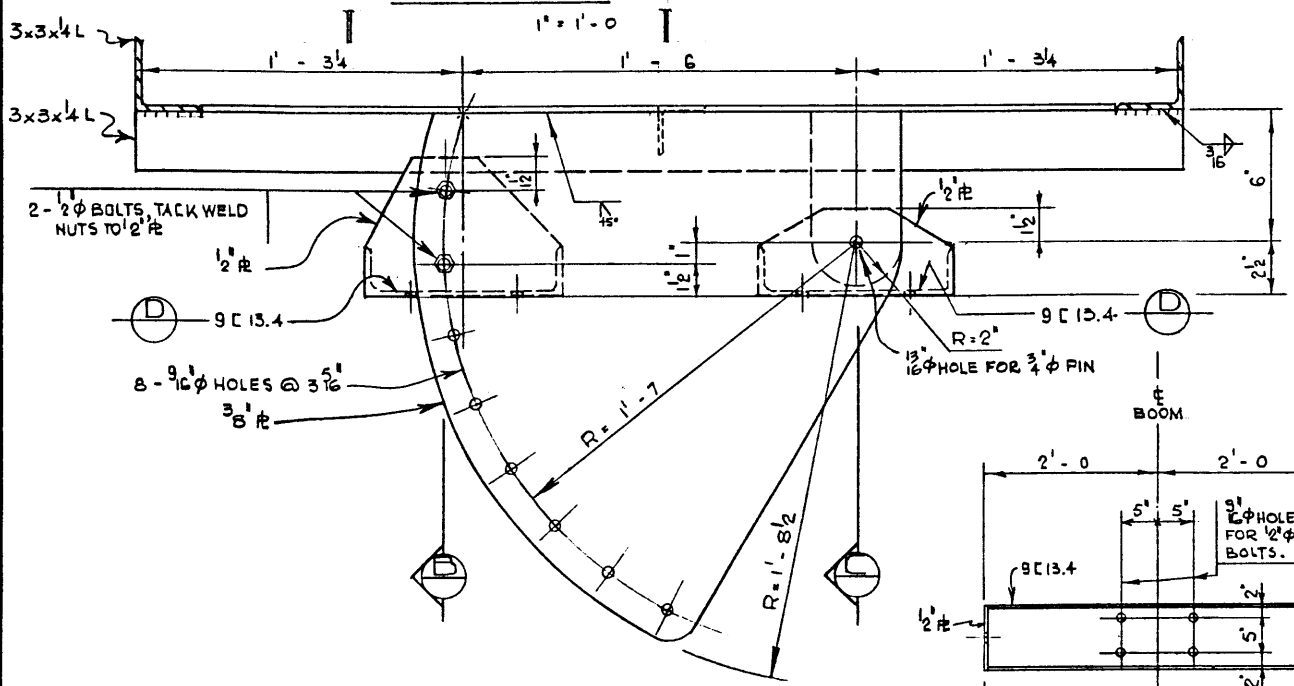


PLAN

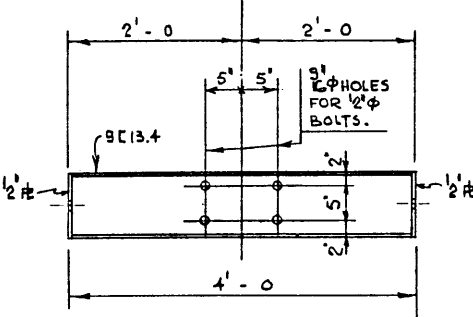


ELEVATION



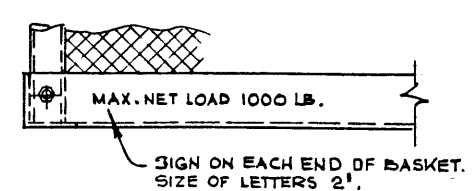
SECTION A

3' = 1'-0



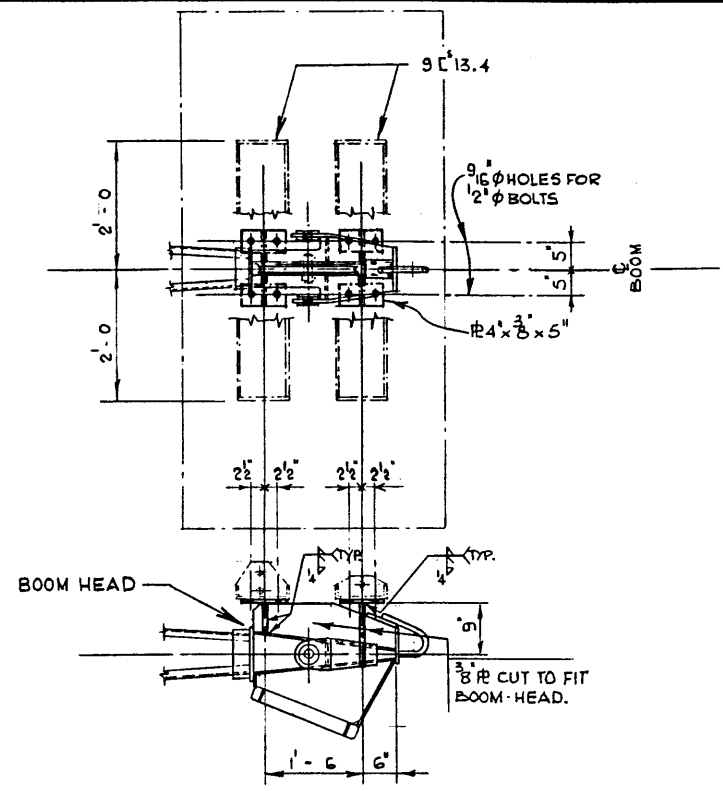
DETAIL

1' = 1'-0



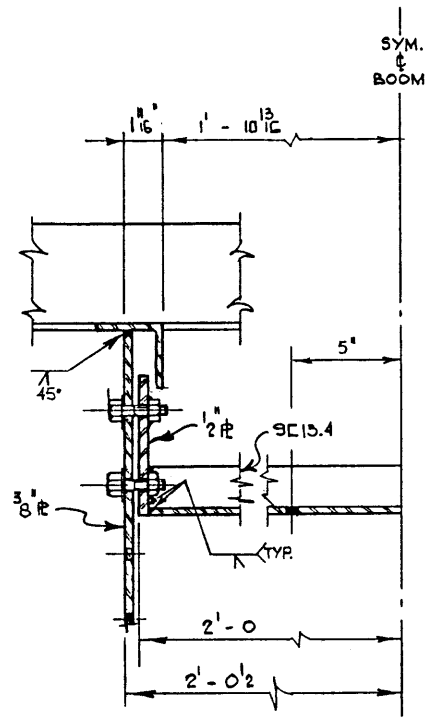
DETAIL

N.T.S.



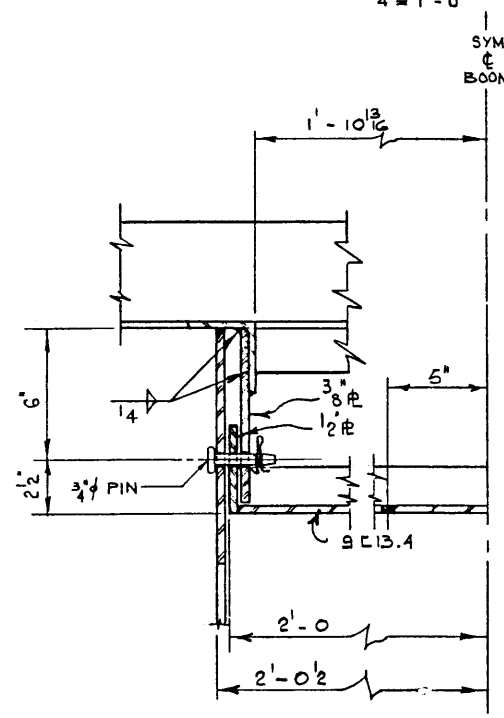
BOOM HEAD CONNECTION

3' = 1'-0



SECTION B

3' = 1'-0

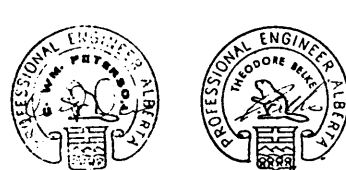


SECTION C

3' = 1'-0

GENERAL NOTES

- ALL REQUIREMENTS OF THE BRIDGE BRANCH SPEC. FOR THE SUPPLY OF STANDARD STEEL FOR BRIDGES SPEC. NO. 187 - G4. SHALL BE MET.
- ALL STEEL IS TO CONFORM TO THE REQUIREMENTS OF ASTM - A 36 OR CSA. G40.12.
- ALL SURFACES SHALL BE GIVEN ONE SHOP COAT OF PAINT.
- ULTRASONIC OR MAGNETIC PARTICLE TESTING SHALL BE CARRIED OUT ON 100% OF THE WELDS ON THE BOOM HEAD.



DESIGNED		DRAWN BY		DATE		CHECKED BY		DATE		STREAM		LOCATION		HWY. NO.		SCALE		FILE NO.		SHEET		DWG. NO.	
T. BELKE		P. SZÖTS		JUNE, 72.												SHOWN				OF		9-1070	

OCCUPATIONAL HEALTH & SAFETY DIVISION
APPROVAL No. E-77-29

PROVINCE OF ALBERTA
DEPARTMENT OF HIGHWAYS AND TRANSPORT
BRIDGE BRANCH

BOOM TRUCK
ELEVATING PLATFORM

APPROVED
CHIEF BRIDGE ENGINEER