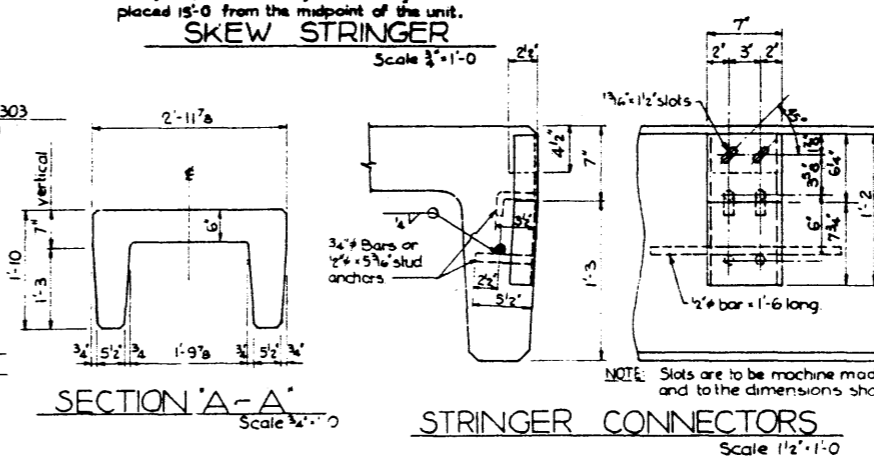
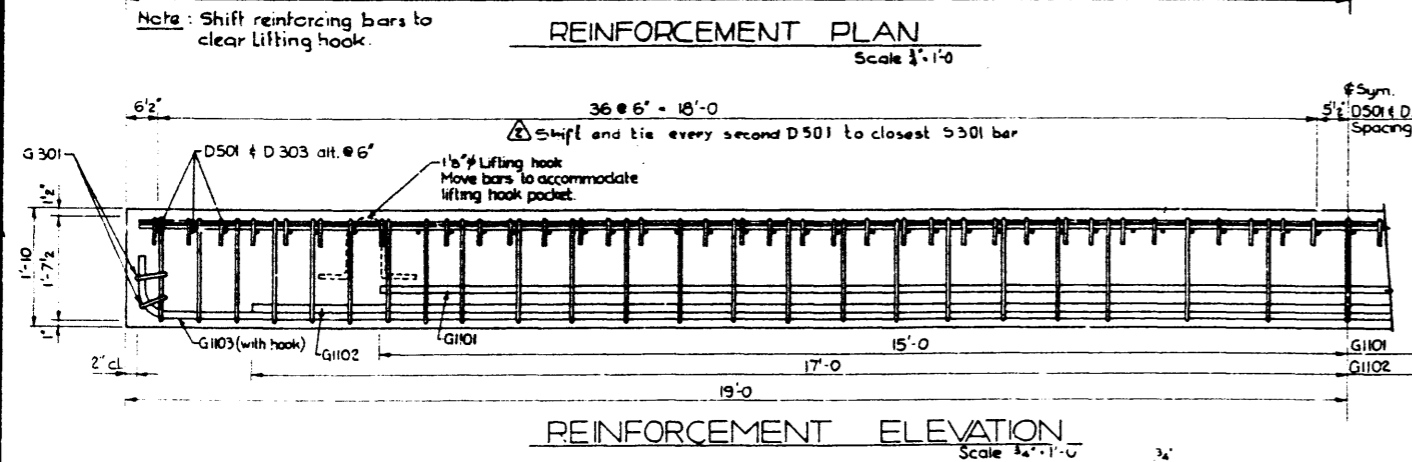
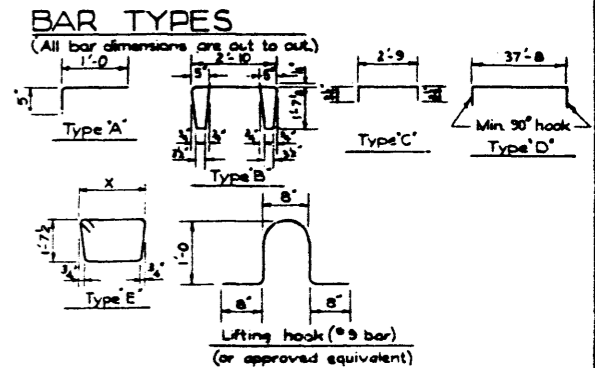
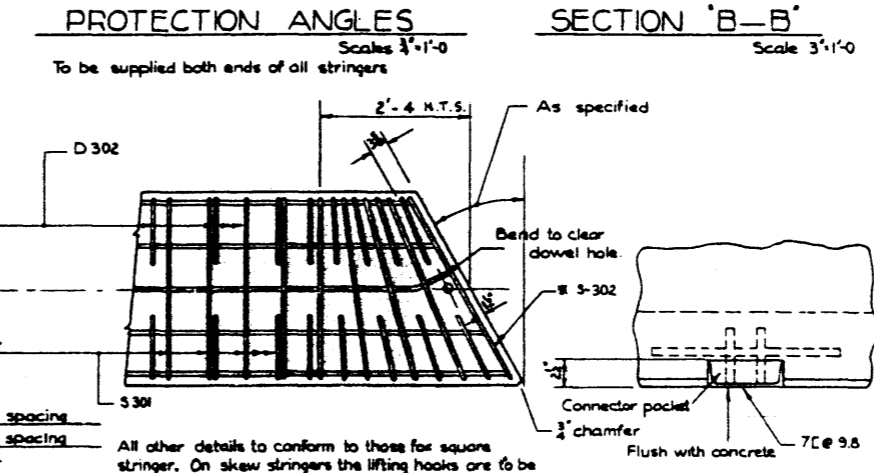
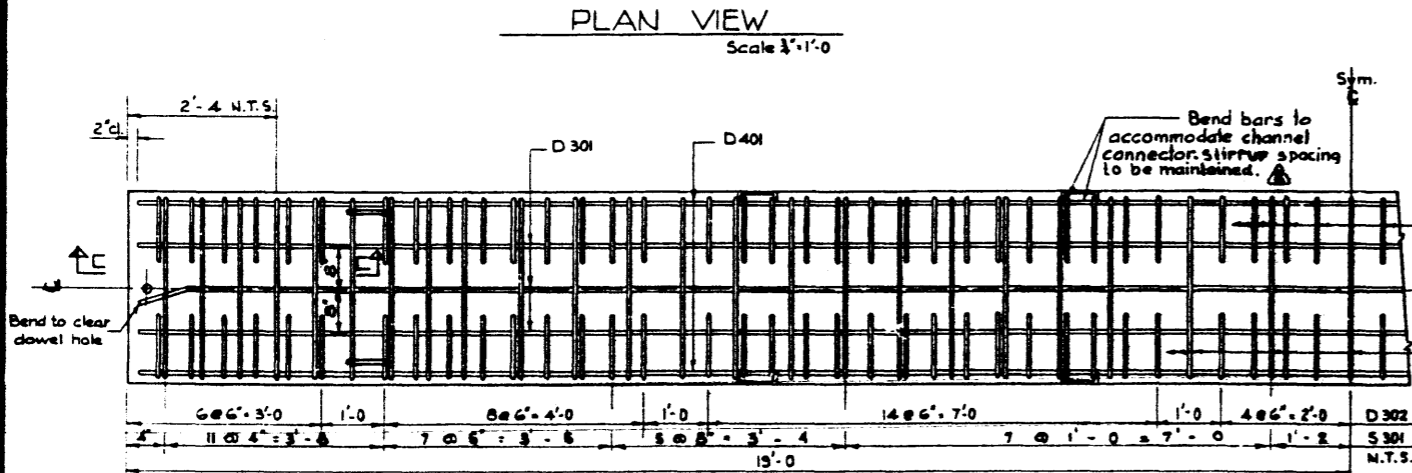


MAP	SIZE	NO.	TYPE	'X'	LENGTH	WEIGHT
D 301	3	3	Str.		37'-8"	42 [#]
D 302	3	136	"A"		1'-5"	72 [#]
D 303	3	37	Str.		2'-8"	37 [#]
S 301	3	68	"B"		10'-0"	89 [#]
G 301	3	4	"C"		3'-4"	5 [#]
J 401	4	2	Str.		37'-8"	50 [#]
D 501	5	38	Str.		2'-8"	106 [#]
S 302	3	2	"E"			
G 1101	11	2	Str.		30'-0"	319 [#]
G 1102	11	2	Str.		34'-0"	361 [#]
G 1103	11	4	"D"		39'-1"	650 [#]

* For skewed stringer only. Total weight: 2,059[#]



GENERAL NOTES:

DESIGN:

- Live Load - A.A.S.H.O. HS-25-44 modified as shown.
- Dead Load - includes allowance for 2" wearing surface.
- Concrete - to be standard weight aggregates with maximum aggregate size of 3/4" inch. Minimum 28 day compressive strength to be 4500 p.s.i.

CONSTRUCTION:

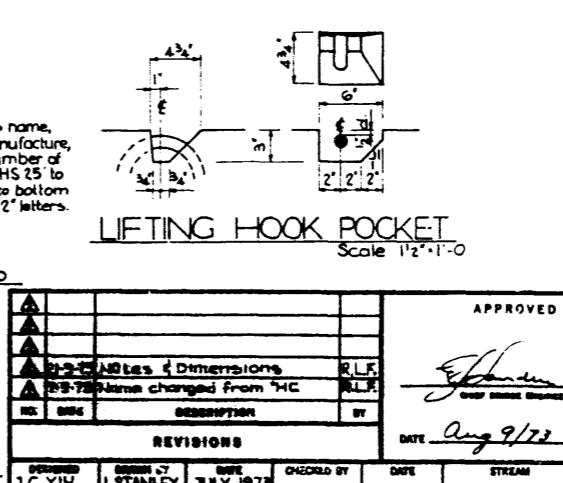
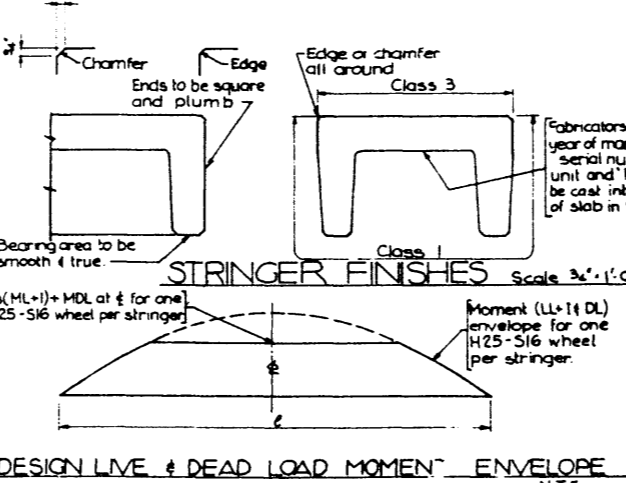
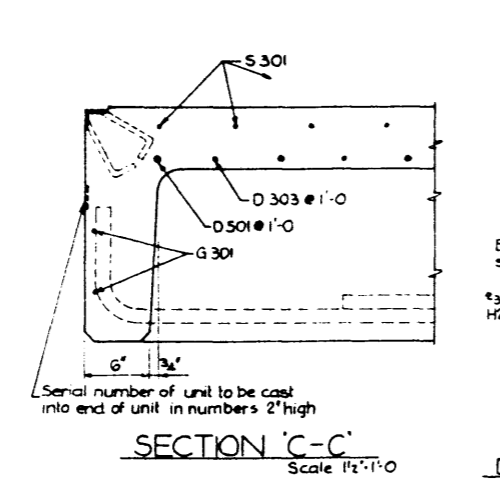
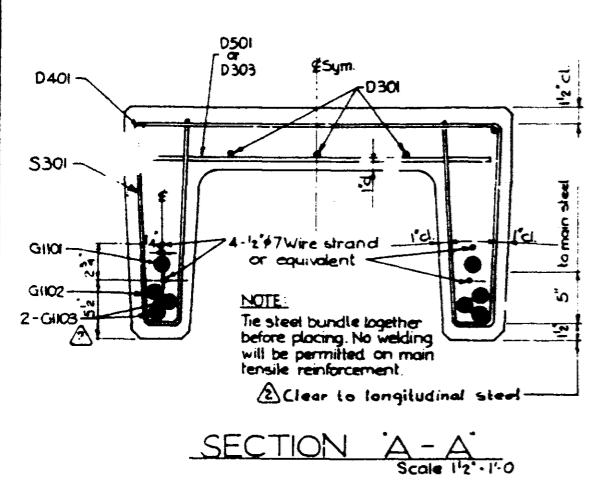
- Entrained air shall be not less than 5%.
- Diameters of all bends shall conform to the recommended minimum and all hooks, unless otherwise noted shall conform to the recommended sizes detailed in the A.C.I. Manual of Standard Practice for Detailing Reinforced Concrete Structures.
- Each stringer shall have a cast chamfer of 3/4" inch.
- All acute angles on skewed stringers shall have 3/4" inch chamfer.
- Concrete shall attain at least 30% of the specified 28 day compressive strength before the units are stripped from the forms or lifted.
- Each connector is to be allowed one 3/4" x 2" H.T. bolt, one heavy hex semi finished nut and three hardened washers. (Supplied by Dept.)
- Stringers shall conform to the requirements of the Alberta Government Specification for the Manufacture of Precast Concrete Bridge Units.

ERECTION:

- Any free space between the connectors shall be filled with washers.

PRESTRESSING:

- Anchorage and stressing system shall be submitted to the Department for approval.
- If post-tensioning is used the cables are to be completely grouted with an approved grout after stressing.
- Minimum concrete strength at release of prestress - 3600 p.s.i.
- Final prestress forces - 89 K (44.5 K each leg).



DESIGN LIVE & DEAD LOAD MOMENT ENVELOPE
N.T.S.

APPROVED

PROVINCE OF ALBERTA
DEPARTMENT OF HIGHWAYS AND TRANSPORT
BRIDGE BRANCH

PRECAST CONCRETE
38 FT. SPAN TYPE 'VH'
INTERIOR STRINGER

HS 25 TRUCK

REVISIONS

NO.	DATE	DESCRIPTION	BY
1		AS SHOWN	

DATE: Aug 9/73

DESIGNED	DRAWN	CHECKED	DATE	STREAM	LOCATION	HYD. NO.	SCALE	FILE NO.	SHEET	BOOK NO.
J.C. YIH	I. STANLEY	JULY 1973					AS SHOWN		5-1087	