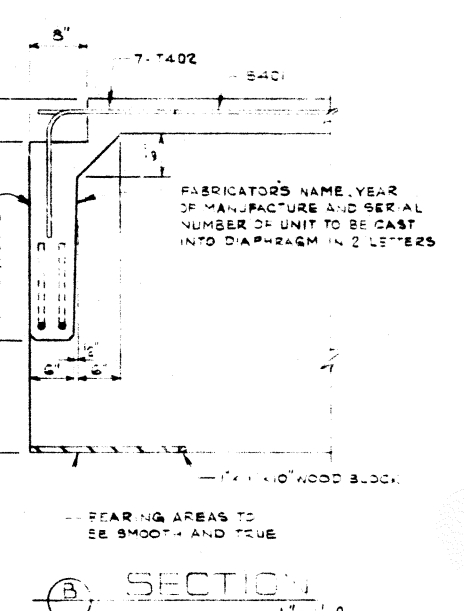
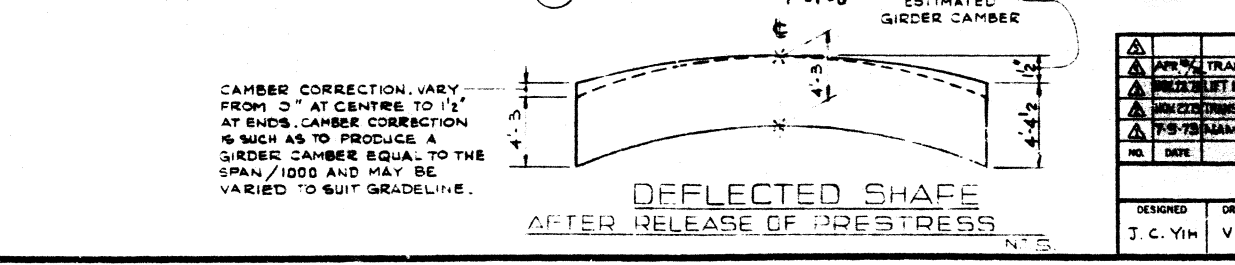
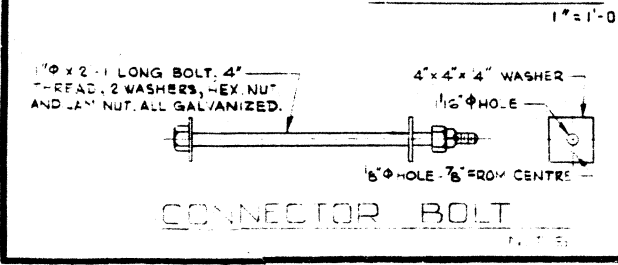
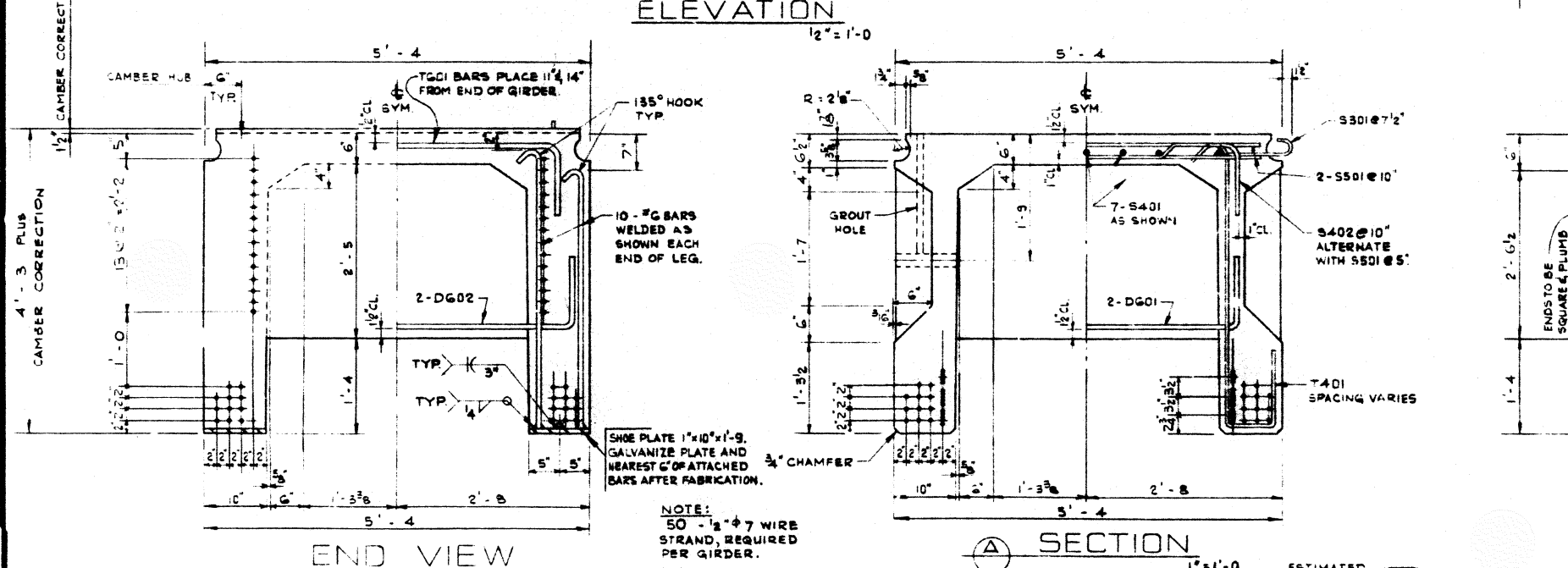
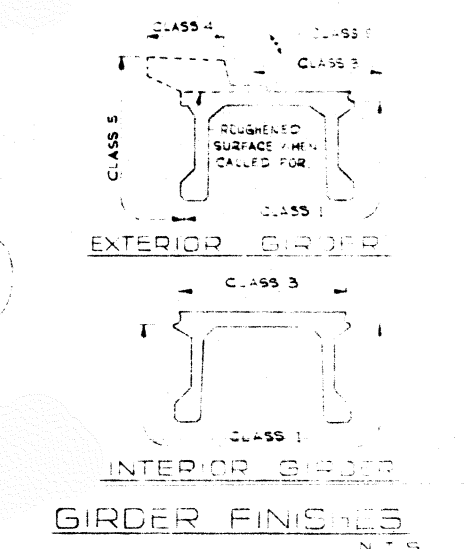


BAR LIST: FOR SKEWED GIRDER

NO.	SIZE	TYPE	LENGTH	WEIGHT
2301	3/4"	C	1'-5"	205
2401	4"	2B STR	30'-9"	575
2402	4"	144 B	6'-5"	617
2501	2"	290 STR	4'-9"	1437
1401	4"	390 A	6'-1"	1585
1402	4"	4 E	3'-0"	28
1501	4"	4 D	4'-6"	39
2502	4"	5 D	4'-2"	74
2503	4"	4 D	5'-0"	42

TOTAL LBS: 4,602

- GENERAL NOTES:**
- DESIGN:**
- A. A. S. H. O. 1969 SPECIFICATION EXCEPT ALLOWABLE FINAL CONCRETE STRESS = 350 P. S. I. IN TENSION.
 - LOADING: 0.90 OF ONE WHEEL LINE OF AN HS 25-44 TRUCK PLUS FULL DEAD LOAD PLUS 2 1/2" WEARING SURFACE.
- MATERIALS:**
- CONCRETE SHALL BE MANUFACTURED USING LIGHTWEIGHT COARSE AGGREGATE AND SAND FINES. LIGHTWEIGHT AGGREGATE SHALL CONFORM TO THE REQUIREMENTS OF ASTM SPECIFICATION C 330 WITH MAXIMUM AGGREGATE SIZE OF 3/4". MINIMUM COMPRESSIVE STRENGTH SHALL BE 5,500 P. S. I. AT 28 DAYS. LIMIT WEIGHT OF THE CONCRETE SHALL BE 120 LBS. PER CUBIC FOOT PLUS OR MINUS 5% IN THE PLASTIC STATE. ENTRAINED AIR SHALL BE NOT LESS THAN 5%.
 - PRESTRESSING STEEL SHALL BE 1/2" DIAMETER - 7 WIRE 270 K STRAND.
- FABRICATION:**
- GIRDERS SHALL CONFORM TO THE REQUIREMENTS OF THE ALBERTA BRIDGE BRANCH SPECIFICATION B 190-4 FOR THE MANUFACTURE OF PRESTRESSED CONCRETE BRIDGE UNITS.
 - REINFORCEMENT: DIAMETERS OF ALL BENDS SHALL CONFORM TO THE RECOMMENDED MINIMUMS AND ALL HOOKS, UNLESS OTHERWISE NOTED, SHALL CONFORM TO THE RECOMMENDED SIZES DETAILED IN THE A. C. I. MANUAL OF STANDARD PRACTICE FOR DETAILING REINFORCED CONCRETE STRUCTURES.
 - PRESTRESSING STEEL: INITIAL TENSIONING LOAD = 28.91 K/STR. NO DESIGN LOAD = 19.95 K/STRAND.
 - CONCRETE MUST ATTAIN 4,300 P. S. I. COMPRESSIVE STRENGTH BEFORE THE PRESTRESSING FORCE IS TRANSFERRED.
 - GALVANIZING SHALL BE IN ACCORDANCE WITH ASTM SPECIFICATION A 153.
 - SHEAR KEY AND BLOCKOUTS SHALL BE SANDBLAST ROUGHENED BY THE GIRDER FABRICATOR TO THE APPROVAL OF THE ENGINEER.
 - RIBS AND CONNECTOR BOLT HOLES SHALL BE OMITTED ON OUTSIDE LEGS OF EXTERIOR GIRDERS.
 - EXTERIOR GIRDER DIAPHRAGMS SHALL BE SPACED AT 13'-0" MAXIMUM.
 - CONNECTOR BOLTS, WASHERS, HEX NUTS, TAM NUTS AND RODOFOAM GASKETS SHALL BE SUPPLIED WITH THE GIRDERS.



SUPERSEDED

APPROVED		PROVINCE OF ALBERTA DEPARTMENT OF HIGHWAYS AND TRANSPORT BRIDGE BRANCH	
DESIGNED J. C. YIM		PRESTRESSED CONCRETE 120'-0" TYPE VF-51 GIRDER HS 25 TRUCK	
DRAWN BY V. G. B.		SHEET 5-1091	
DATE JULY 1973		DWG. NO.	
CHECKED BY		DATE	
DATE		STR. AM	
LOCATION		HWY. NO.	
SCALE		FILE NO.	
SHOWN		SHEET	