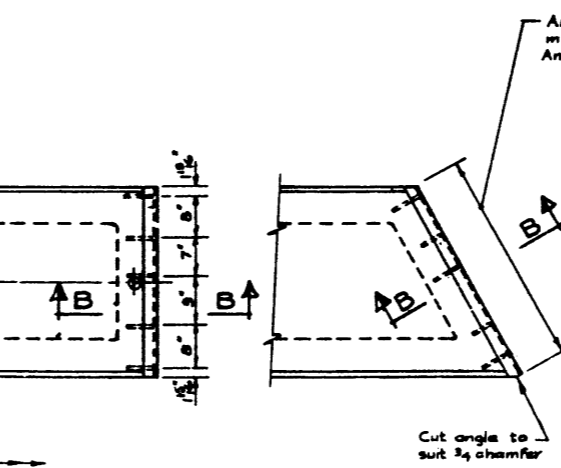
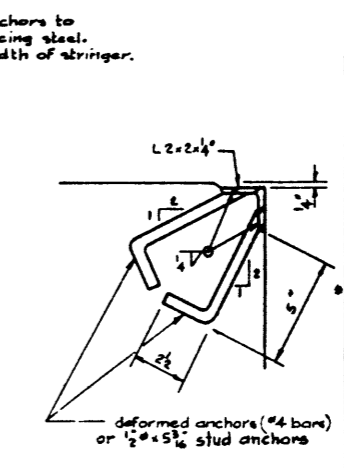


PLAN VIEW  
Scale: 3/4" = 1'-0"



PROTECTION ANGLES  
Scale: 3/4" = 1'-0"

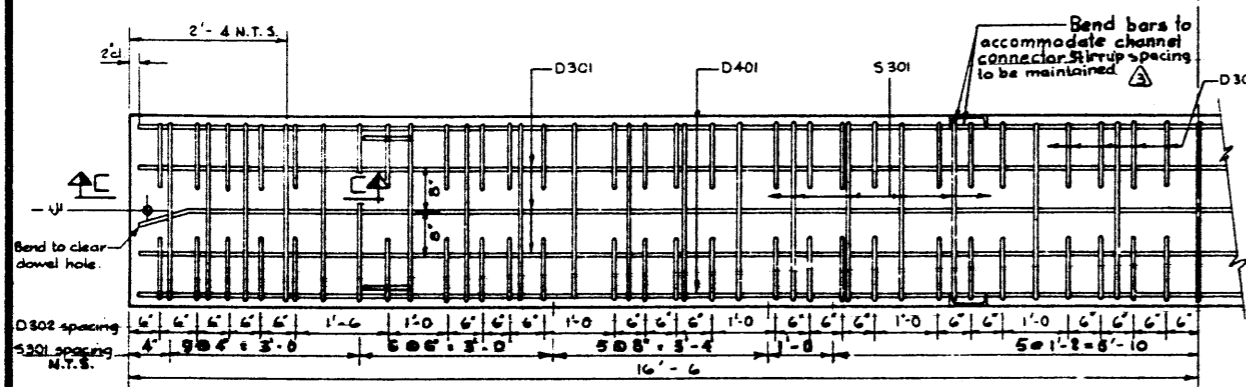


SECTION B-B  
Scale: 3" = 1'-0"

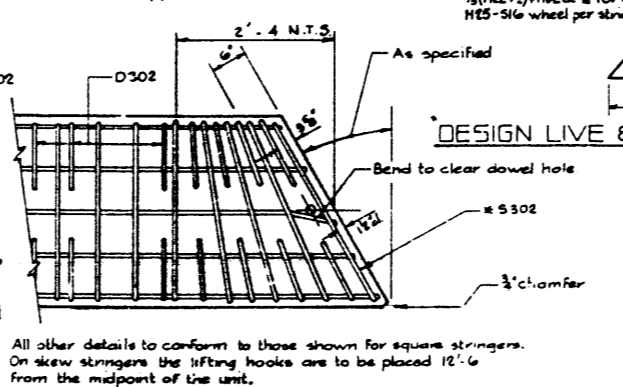
BAR LIST

MARK	SIZE	NO.	TYPE	"X"	LENGTH	WEIGHT
D 501	3	3	Str.		32'-0	37
D 502	3	100	A		1'-5	53
S 501	3	33	B		9'-10	110
D 401	4	2	Str.		32'-8	44
D 501	5	38	Str.		2'-8	92
G 1101	11	2	Str.		28'-0	298
<hr/>						
G 1102	11	4	D		34'-1	724
S 302	3	2	E	Varies		
G 301	3	4	C		3'-4	5
D 303	3	32	Str.		2'-6	32

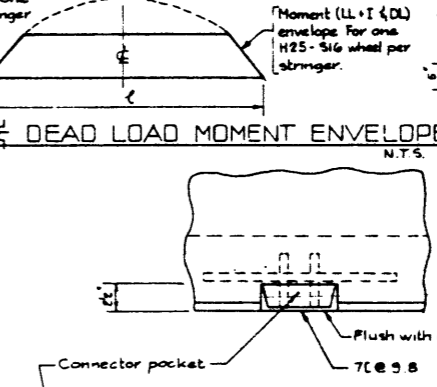
# For skewed stringer only  
Total weight: 1478  
BAR TYPES (All bar dimensions are out to out)



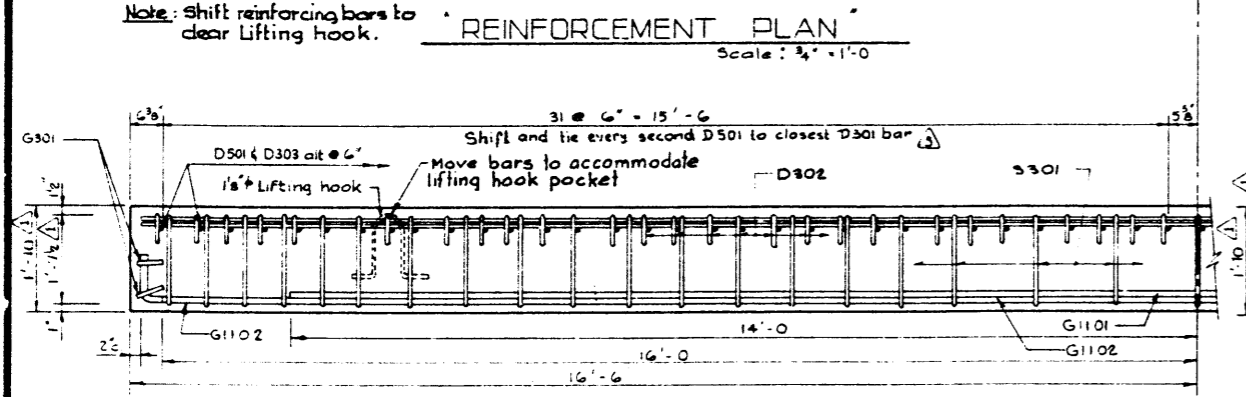
REINFORCEMENT PLAN  
Scale: 3/4" = 1'-0"



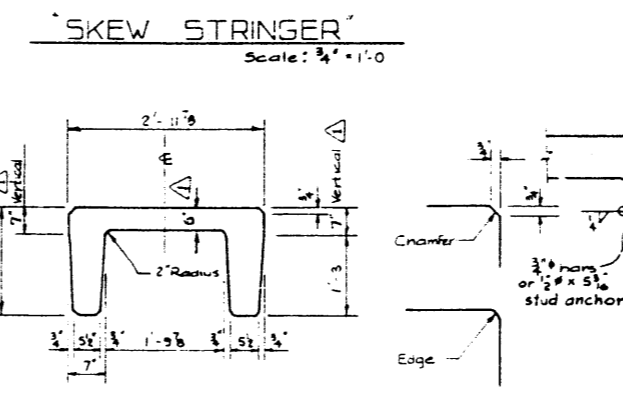
DESIGN LIVE & DEAD LOAD MOMENT ENVELOPE  
Scale: 3/4" = 1'-0"



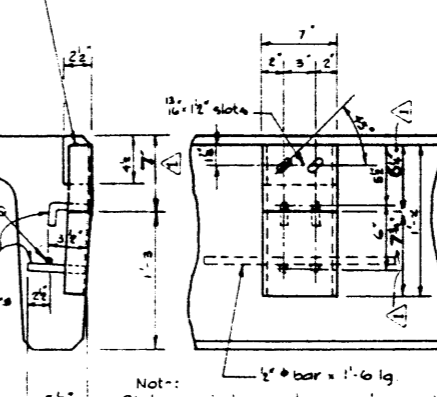
SKUEW STRINGER  
Scale: 3/4" = 1'-0"



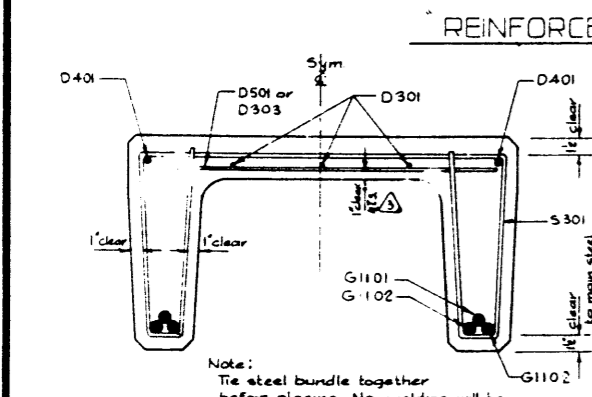
REINFORCEMENT ELEVATION  
Scale: 3/4" = 1'-0"



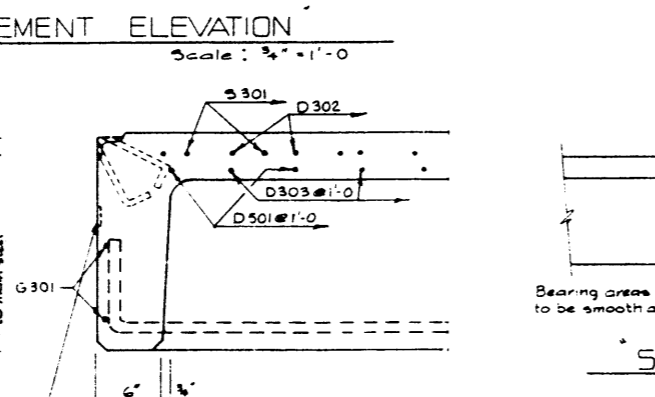
SECTION A-A  
Scale: 3/4" = 1'-0"



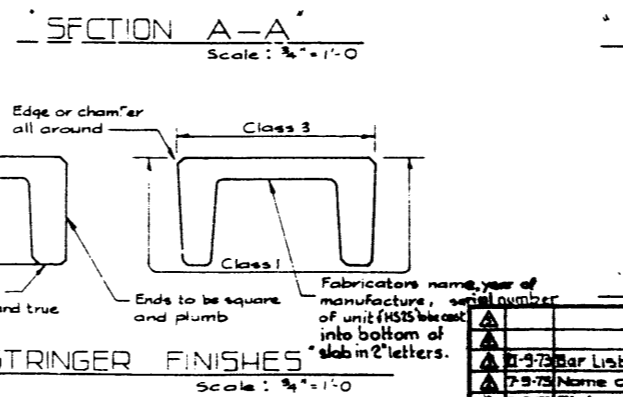
STRINGER CONNECTORS  
Scale: 1/2" = 1'-0"



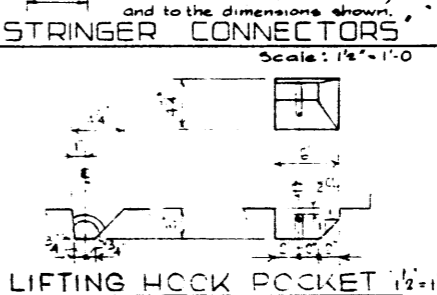
SECTION A-A  
Scale: 1/2" = 1'-0"



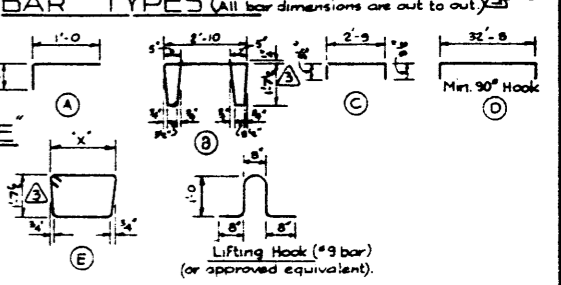
SECTION C-C  
Scale: 1/2" = 1'-0"



STRINGER FINISHES  
Scale: 3/4" = 1'-0"



LIFTING HOOK POCKET  
Scale: 1/2" = 1'-0"



GENERAL NOTES

- DESIGN**
- live Load - A.A.S.H.O. HS 25-44 modified as shown.
  - Dead Load - includes allowance for 2" wearing surface.
  - Concrete - to be standard weight aggregates with maximum aggregate size of 3/4 inch. Minimum 28 day compressive strength to be 4000 p.s.i.
- CONSTRUCTION**
- Entrained Air shall be not less than 3%
  - Dimensions of all bands shall conform to the recommended minimums and all hooks, unless otherwise noted shall conform to the recommended sizes detailed in the A.C.I. Manual of Standard Practice for Detailing Reinforced Concrete Structures
  - Each stringer shall have a cast camber of 3/4 inch.
  - All acute angles on skewed stringers shall have 3/4 inch chamfer.
  - Concrete shall attain at least 30% of specified 28 day compressive strength before the units are strip from the forms or lifted.
  - Each connector is to be allowed one 3/4" diameter x 2" N.T. bolt, one heavy hex seal finished nut and three hardened washers (Supplied by Dept.).
  - Stringers shall conform to the requirements of the Alberta Government Specification for the Manufacture of Precast Concrete Bridge Units.
- ERECTION**
- Any free space between the connectors shall be filled with washers.

HS 25 - TRUCK

APPROVED  CHIEF BRIDGE ENGINEER DATE: Aug 9/73		PROVINCE OF ALBERTA DEPARTMENT OF HIGHWAYS AND TRANSPORT BRIDGE BRANCH <b>PRECAST CONCRETE</b> 33 FT. SPAN TYPE "VH" INTERIOR STRINGER
DESIGNED: J.C. YIH DRAWN BY: P.SZOTS DATE: JULY 1973 CHECKED BY: DATE: STREAM: LOCATION: HWY. NO.: SCALE: FILE NO.: SHEET: DWG. NO.: S-1092		