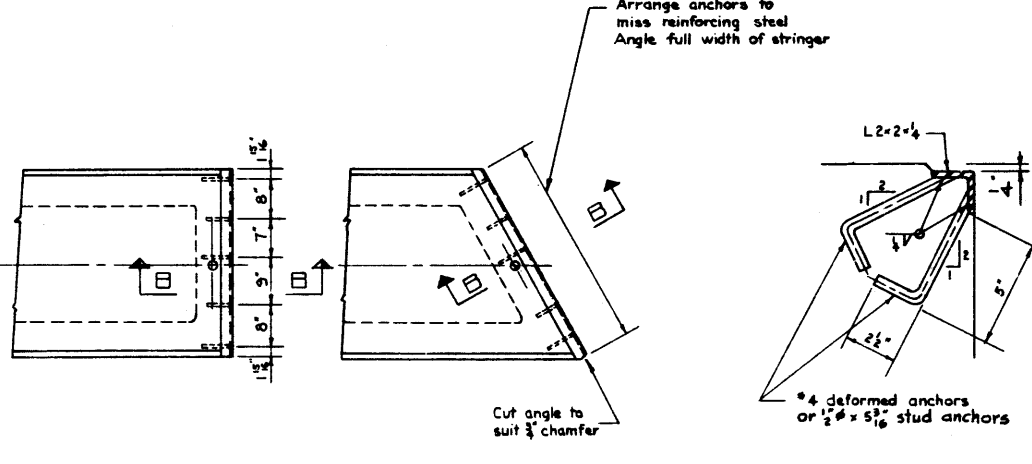


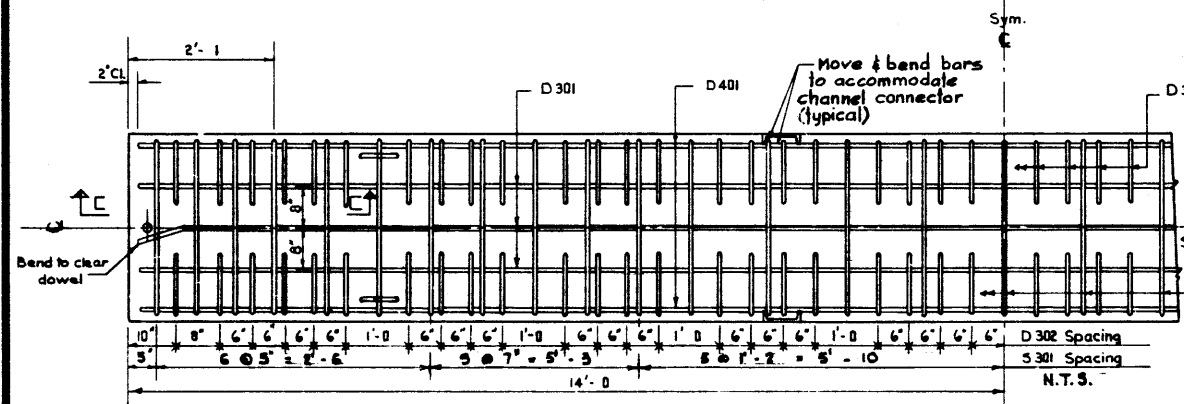
PLAN VIEW
Scale 3/4" = 1'-0"



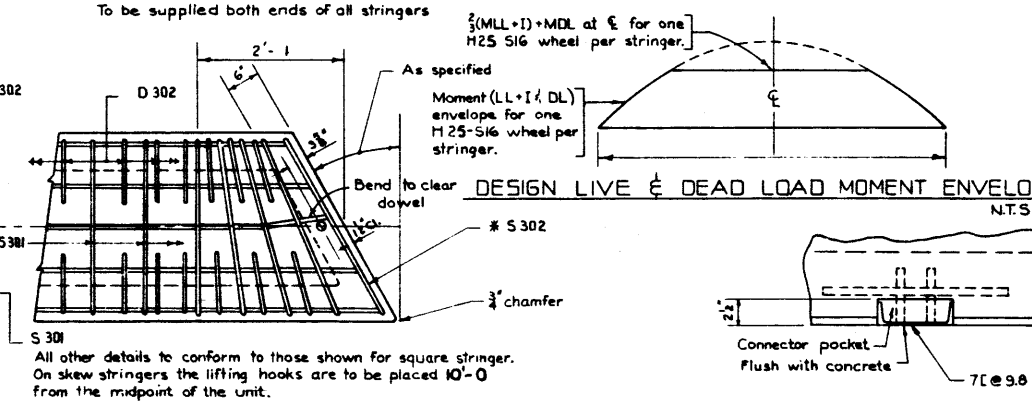
PROTECTION ANGLES
Scale 3/4" = 1'-0"

SECTION B-B
Scale 3/4" = 1'-0"

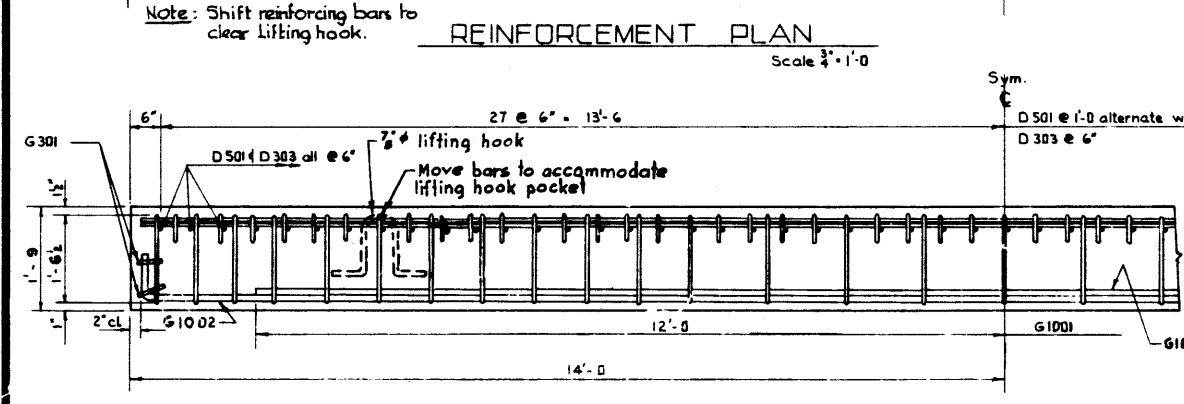
BAR LIST						
MARK	SIZE	NO.	TYPE	X	LENGTH	WEIGHT
D 301	3	3	Str.		27'-8"	81 ⁰
D 302	3	88	A		1'-5"	47 ⁰
S 301	3	41	B		9'-8"	149 ⁰
D 401	4	2	Str.		27'-8"	37 ⁰
D 501	5	28	Str.		2'-8"	76 ⁰
G 1001	10	2	Str.		24'-8"	207 ⁰
G 1002	10	4	D		28'-11"	498 ⁰
S 302	3	2	E			
G 301	3	4	C		3'-4"	5 ⁰
D 303	3	27	Str.		2'-8"	27 ⁰
						Total weight: 1079 ⁰



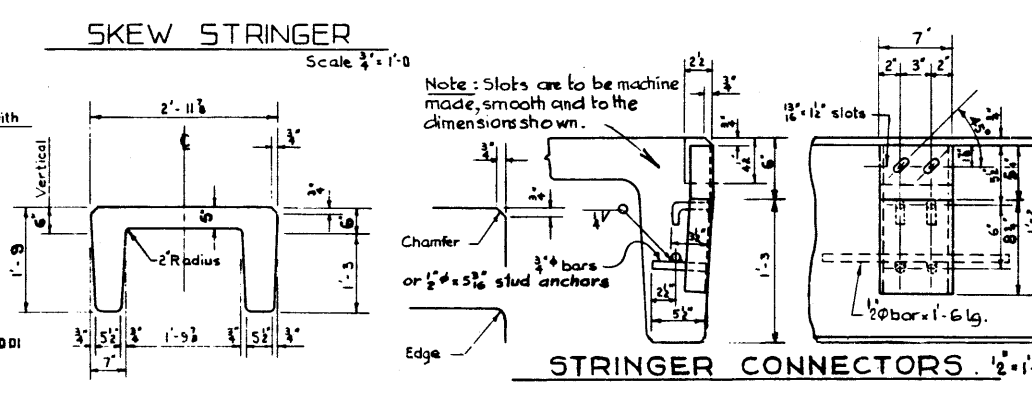
REINFORCEMENT PLAN
Scale 3/4" = 1'-0"



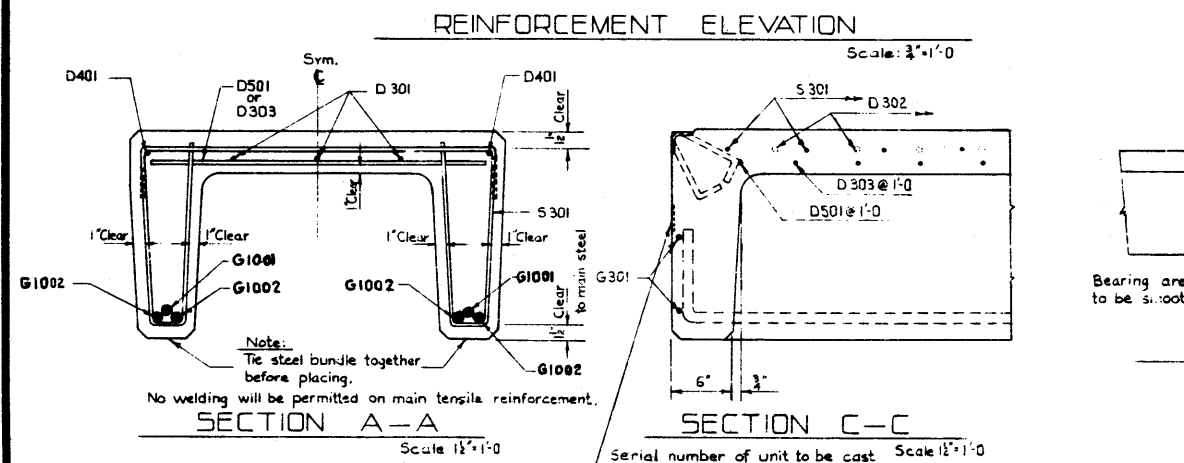
SKEW STRINGER
Scale 3/4" = 1'-0"



REINFORCEMENT ELEVATION
Scale 3/4" = 1'-0"

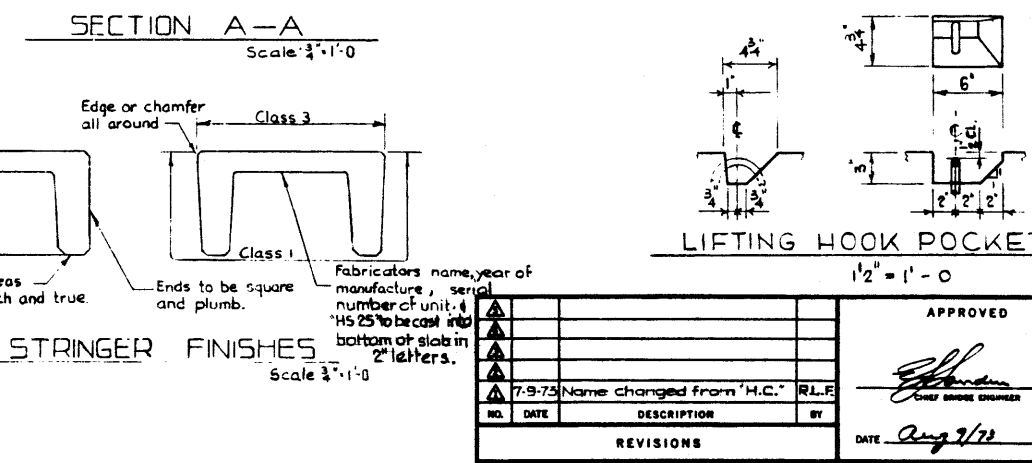


STRINGER CONNECTORS
Scale 1/2" = 1'-0"

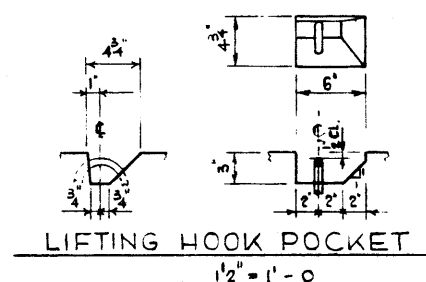


SECTION A-A
Scale 1 1/2" = 1'-0"

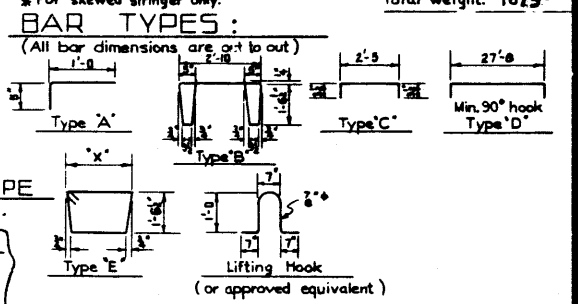
SECTION C-C
Scale 1 1/2" = 1'-0"



STRINGER FINISHES
Scale 3/4" = 1'-0"



LIFTING HOOK POCKET
1 1/2" = 1'-0"



GENERAL NOTES:

- DESIGN:**
- Live Load - A.A.S.H.O. HS25-44 modified as shown.
 - Dead Load - includes allowance for 2" wearing surface.
 - Concrete - to be light weight aggregates with maximum aggregate size of 3/4 inch. Minimum 28 day compressive strength to be 4000 p.s.i. The unit weight of the concrete shall be 105 pounds per cubic foot plus or minus 5% when unit weight is determined in conformity with the requirements of the specification A.S.T.M. C 330.
- CONSTRUCTION:**
- Entrained Air shall be not less than 5%
 - Diameters of all bends shall conform to the recommended minimums and all hooks, unless otherwise noted shall conform to the recommended sizes detailed in the A.C.I. Manual of Standard Practice for Detailing Reinforced Concrete Structures.
 - Each stringer shall have a cast camber of 3/8 inch.
 - All acute angles on skewed stringers shall have 3/8 inch chamfer.
 - Concrete shall attain at least 30% of the specified 28 day compressive strength before the units are stripped from the form or lifted.
 - Each connector is to be allowed one 2 1/4" x 2 1/4" bolt, one heavy hex semi finished nut and three hardened washers. (Supplied by Dept.)
 - Stringers shall conform to the requirements of the Alberta Government Specs. for the Manufacture of Precast Bridge Units.
- ERECTION**
- Any free space between the connectors shall be filled with washers.

HS 25 TRUCK

PROVINCE OF ALBERTA
DEPARTMENT OF HIGHWAYS AND TRANSPORT
BRIDGE BRANCH

**PRECAST CONCRETE
28 FT. SPAN TYPE "VH"
INTERIOR STRINGER**

DESIGNED		DRAWN BY		DATE		CHECKED BY		DATE		STREAM		LOCATION		PRY. NO.		SCALE		FILE NO.		SHEET		DWG. NO.	
J.C. YIH		P. SZOTS		JULY 1975												As shown				5-1094			

APPROVED
[Signature]
CHIEF BRIDGE ENGINEER

DATE: Aug 2/75

REVISIONS

NO.	DATE	DESCRIPTION	BY
1	7-9-75	Name changed from "H.C."	RL.F.