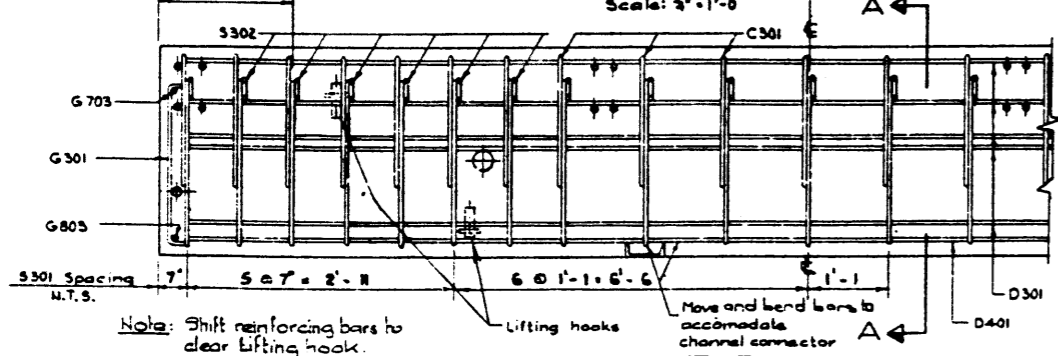
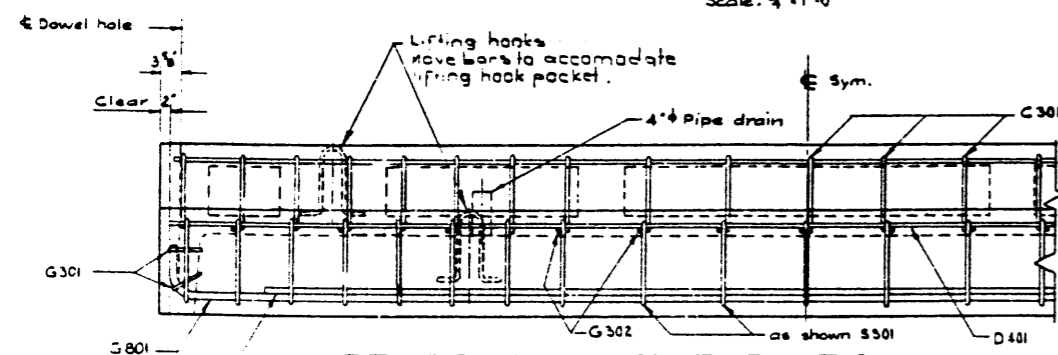


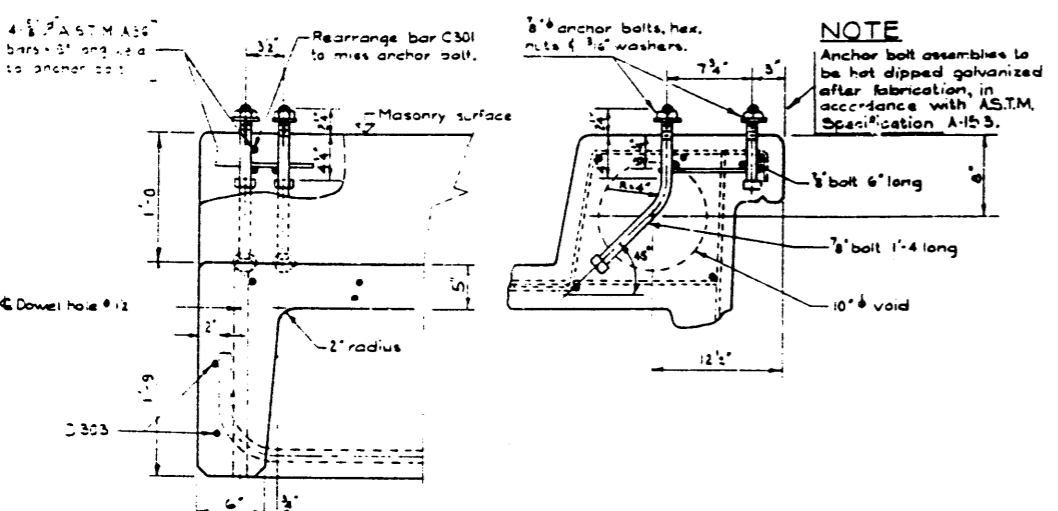
PLAN VIEW
Scale: 3/4" = 1'-0"



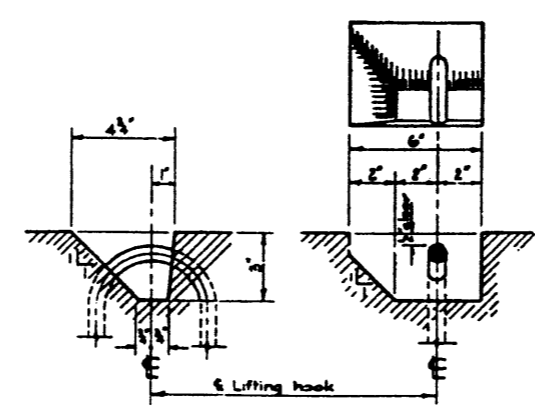
REINFORCEMENT PLAN
Scale: 3/4" = 1'-0"



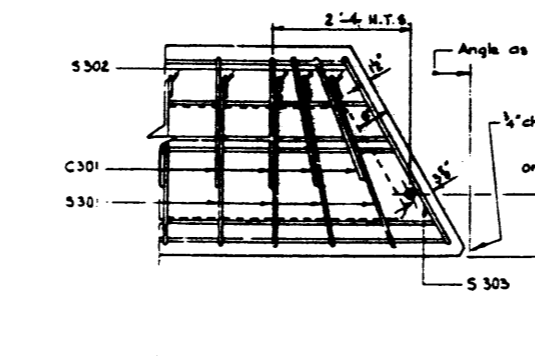
REINFORCEMENT ELEVATION
Scale: 3/4" = 1'-0"



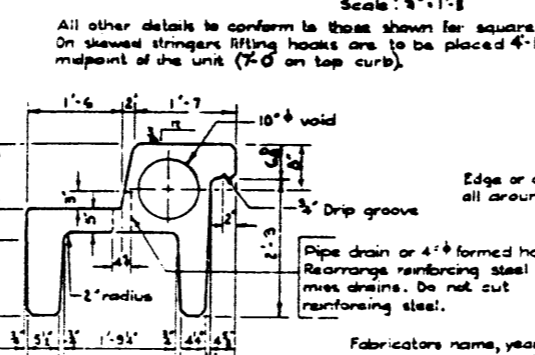
ANCHOR BOLT DETAIL
Scale: 1/2" = 1'-0"



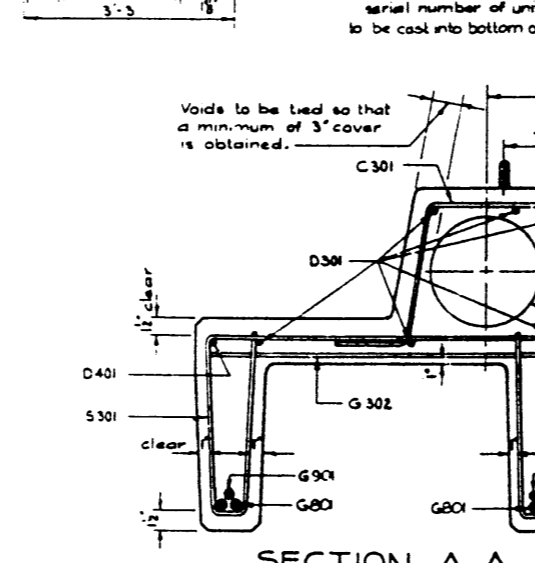
LIFTING HOOK POCKET
Scale: 3" = 1'-0"



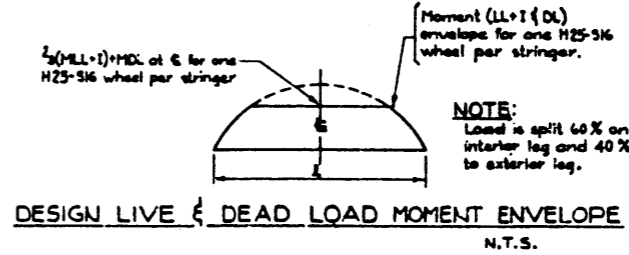
SKEW STRINGER
Scale: 3/4" = 1'-0"



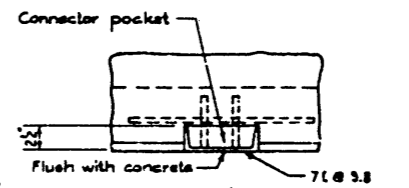
STRINGER FINISHES
Scale: 3/4" = 1'-0"



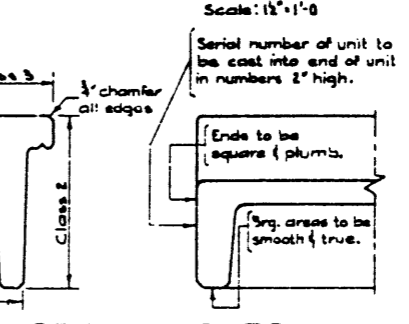
SECTION A-A
Scale: 1/2" = 1'-0"



DESIGN LIVE & DEAD LOAD MOMENT ENVELOPE
N.T.S.



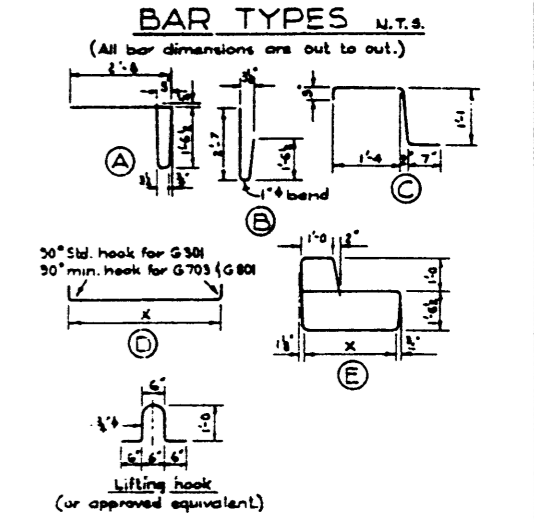
STRINGER CONNECTOR
Scale: 1/2" = 1'-0"



ANCHOR BOLT LOCATION (FOR SKEWED ENDS)
N.T.S.

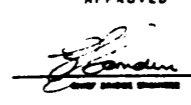
BAR LIST										
Mark	Size	Number	Type	X	Length	Weight				
S 301	3	25	A		6'-1	57				
S 302	3	25	B		4'-2	36				
G 301	3	4	D	2'-7	3'-6	5				
G 302	3	13	Sls		2'-8	13				
G 401	3	28	C		3'-3	23				
D 301	3	6	Sls		19'-8	44				
D 401	4	1	Sls		19'-8	13				
G 801	8	3	D	19'-8	20'-9	166				
G 901	9	1	Sls		16'-9	57				
G 701	7	1	Sls		17'-6	36				
S 303						2	E			

Total: 468 lbs.
* For skewed stringers only.



BAR TYPES N.T.S.

- GENERAL NOTES**
- DESIGN**
- Live Load - A.A.S.M.O. HS-25-44 modified as shown.
 - Dead Load - includes allowances for 2" wearing surface.
 - Concrete - to be standard weight aggregate with maximum aggregate size of 3/4" inch. Minimum 28 day compressive strength to be 4000 p.s.i.
- CONSTRUCTION**
- Entrained air shall be not less than 5%.
 - Diameters of all bars shall conform to the recommended minimums and all hooks, unless otherwise noted shall conform to the recommended sizes detailed in the A.C.I. Manual of Standard Practice for Detailing Reinforced Concrete Structures.
 - Each stringer shall have a cast chamfer of 1/4" inch.
 - All acute angles on skewed stringers shall have 1/4" inch chamfer.
 - Concrete shall attain at least 30% of the specified 28 day compressive strength before the units are stripped from the forms or lifted.
 - Each connector is to be allowed one 3/4" x 2" H.T. bolt, one heavy hex semi finished nut and three hardened washers. (Supplied by Dept.)
- ERECTOR**
- Stringers that conform to the requirements of the Alberta Government Specification for the manufacture of Precast Concrete Bridge Units.
 - Any free space between the connectors shall be filled with washers.

APPROVED		PROVINCE OF ALBERTA DEPARTMENT OF HIGHWAYS AND TRANSPORT BRIDGE BRANCH	
 DATE: Aug 9/22		PRECAST CONCRETE 20 FT. SPAN TYPE 'VH' CURB STRINGER	
REVISIONS 7-9-73 Name changed from "H.C." to "P.C."			
DESIGNED J.C.VIH	CHIEF R.C. I. S.	DATE JULY 18/1973	PROJECT NO. S-1097