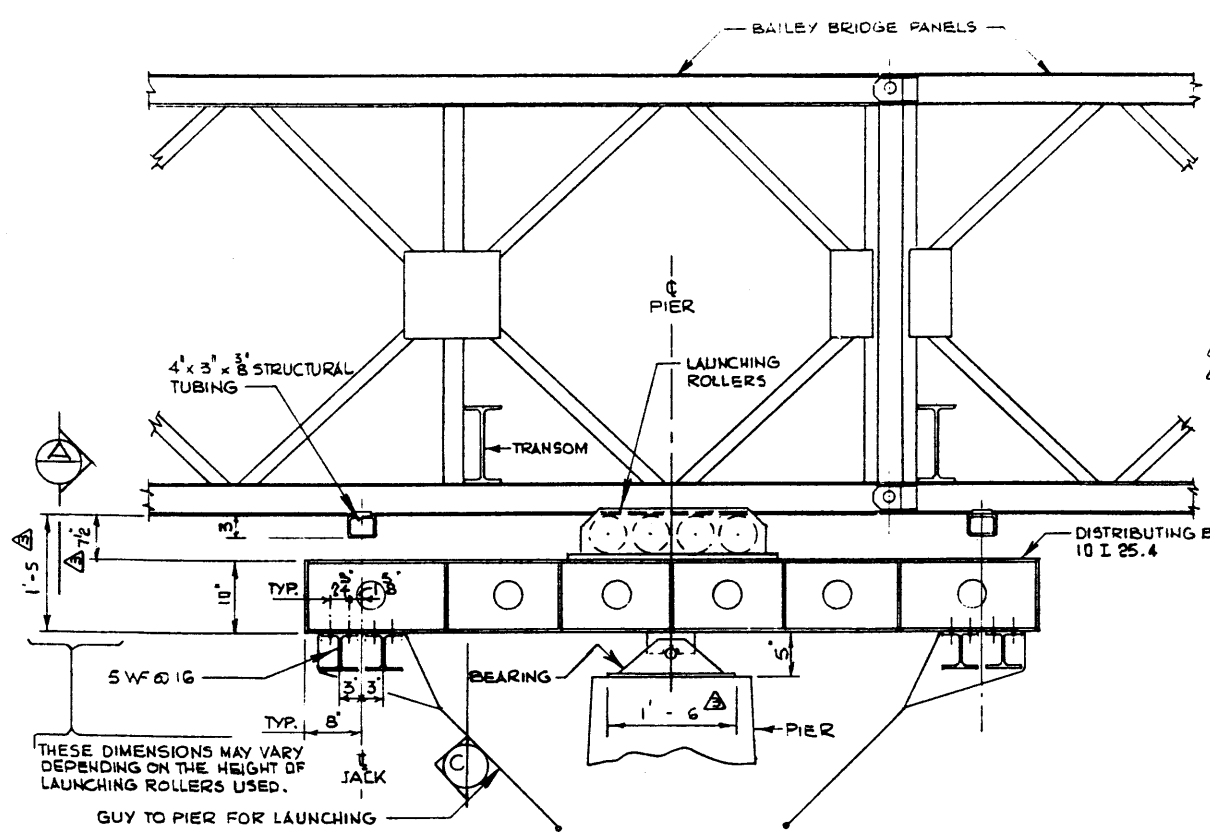
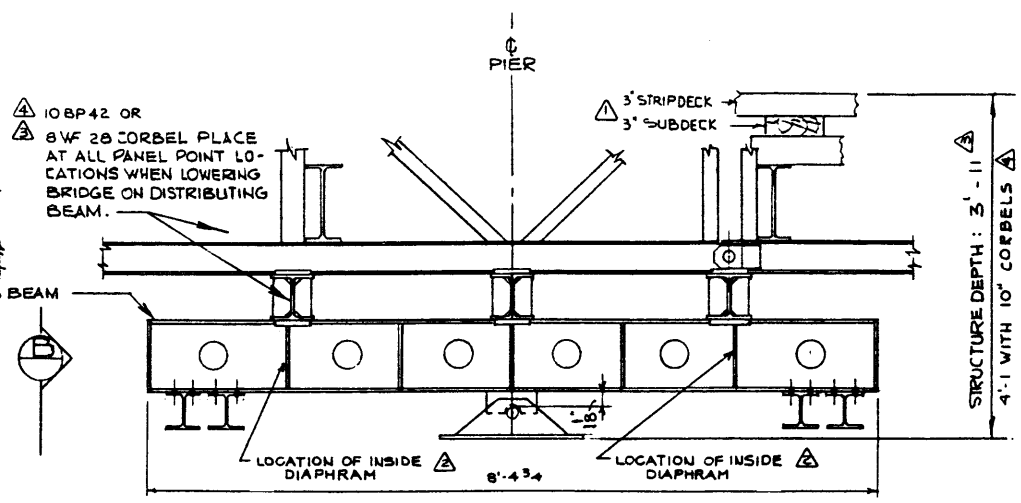


BEARING LAYOUT

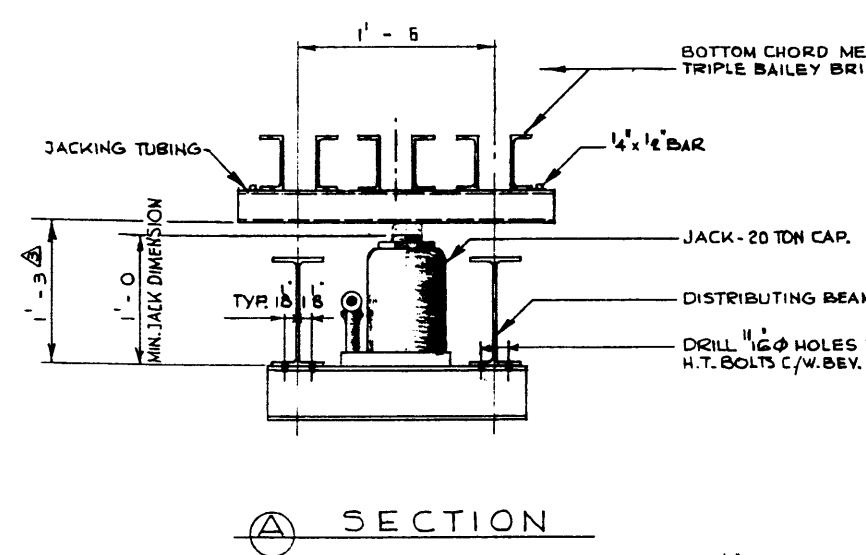


POSITION AFTER LAUNCHING

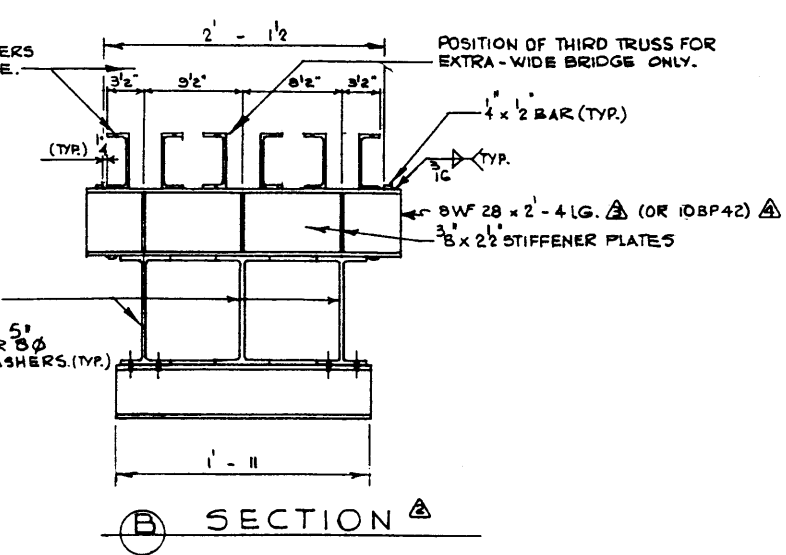


LOWERED POSITION

BAILEY BRIDGE AT PIER
1" = 1'-0"

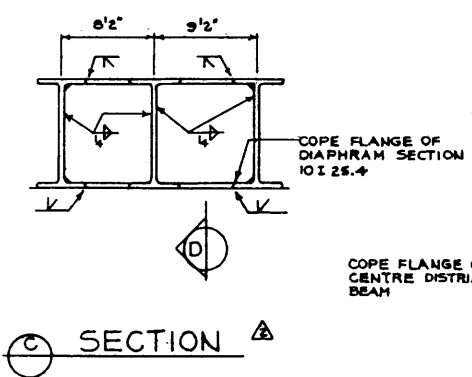


SECTION A



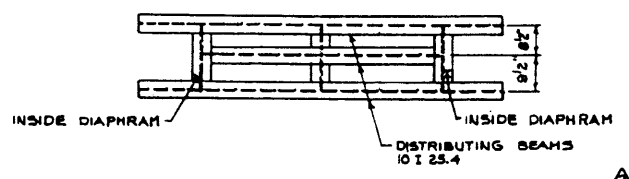
SECTION B

JACKING FRAME
1 1/2" = 1'-0"



SECTION C

SECTION D



PLAN OF DISTRIBUTING BEAMS

GENERAL NOTES:

- THIS DETAIL IS INTENDED FOR USE AT PIERS WHEN LAUNCHING A BAILEY BRIDGE THAT IS CONTINUOUS OVER THE PIERS. IT MAY BE USED FOR A DOUBLE OR TRIPLE BAILEY.
- TO REMOVE LAUNCHING ROLLERS RAISE BRIDGE ON JACK AS SHOWN.
- BEFORE LOWERING BRIDGE PLACE 6 WF 20 CORBELS AT A MINIMUM OF TWO PANEL POINTS. PLACE CORBELS ON EITHER SIDE OF BEARING 2' - 6" APART.
- JACKING ARRANGEMENT IS ADEQUATE FOR TRIPLE - REINFORCED BRIDGE WITH DECK IN PLACE AND A MAXIMUM SPAN OF 130 FT.

WORK THIS DWG. IN CONJUNCTION WITH DWG. S-700.

| | | | | | | | | | | | |
|---|--|--|----------------------------------|--|--|--|--|--|--|--|--|
| DESIGNED: R.W.KORNELSEN DRAWN BY: P. SZOTIS DATE: AUG. 1973 | | | CHECKED BY: _____ DATE: _____ | | | APPROVED: _____ CHIEF BRIDGE ENGINEER | | | PROVINCE OF ALBERTA DEPARTMENT OF HIGHWAYS AND TRANSPORT BRIDGE BRANCH | | |
| NO. DATE DESCRIPTION BY | | | REVISIONS | | | BAILEY BRIDGE JACKING DETAILS | | | SHEET NO. S-1098 | | |