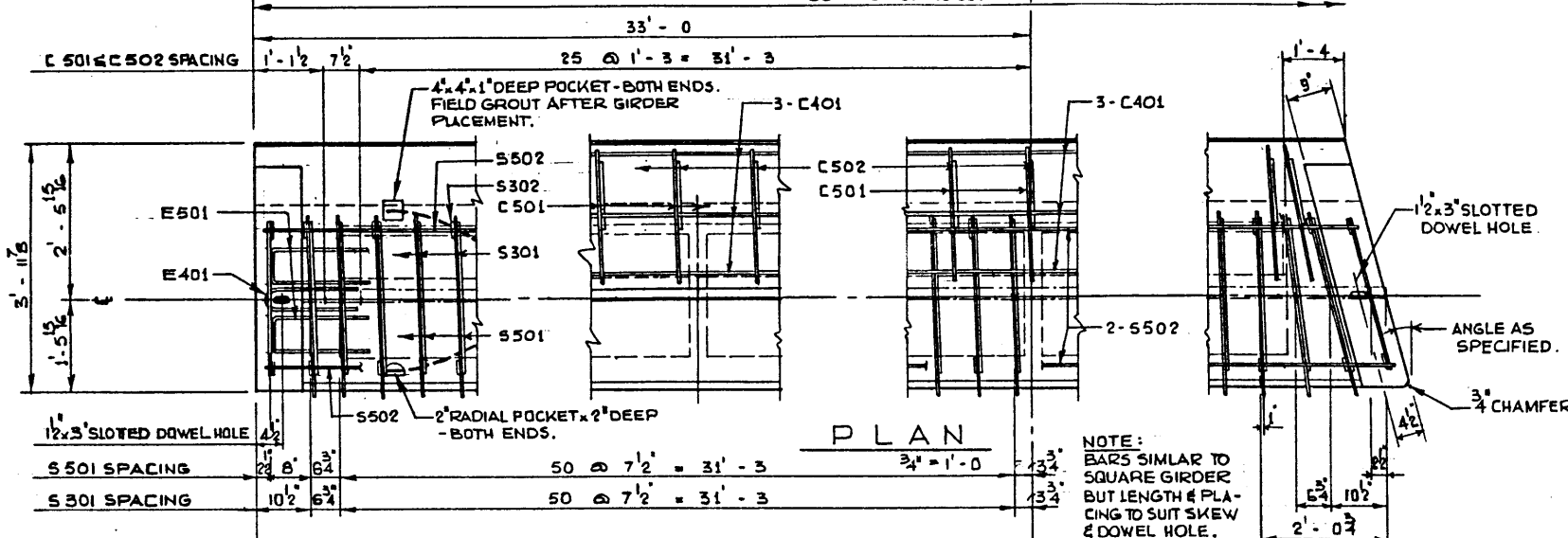


SYM. (EXCEPT AS NOTED)

66'-0" OUT TO OUT

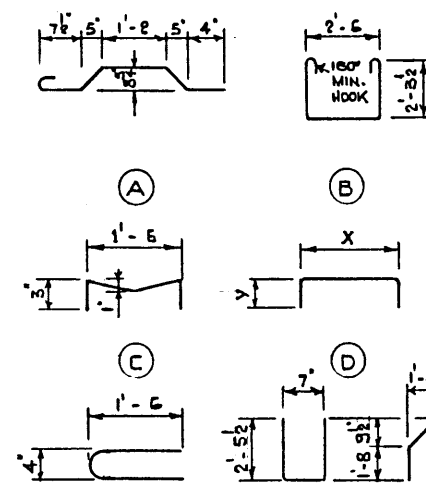


PLAN

NOTE: BARS SIMILAR TO SQUARE GIRDER BUT LENGTH & PLACING TO SUIT SKEW & DOWEL HOLE.

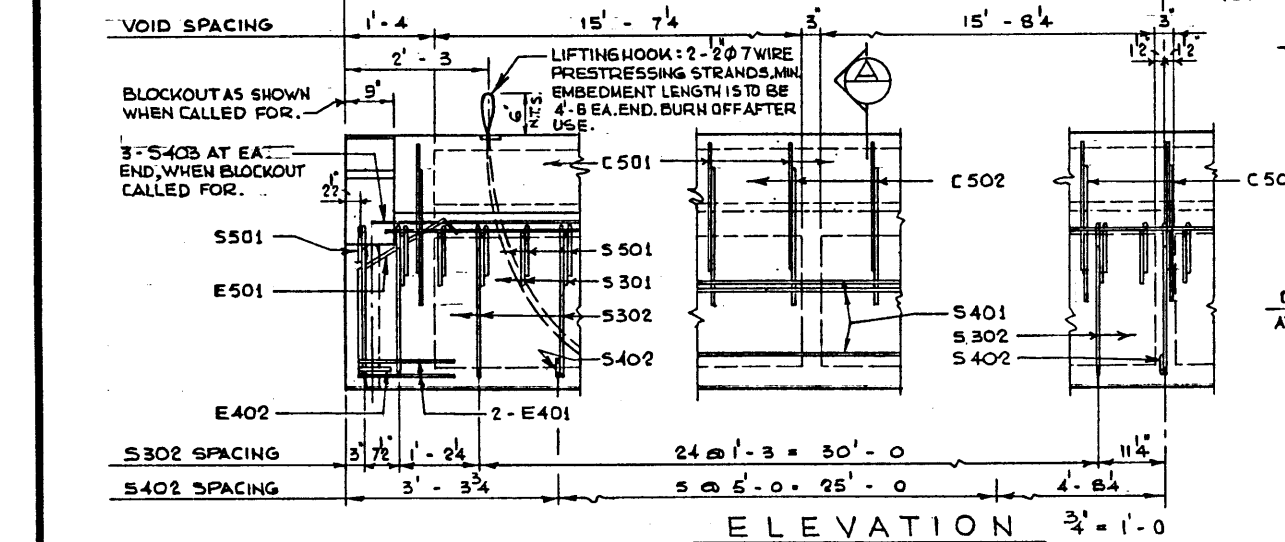
BAR TYPES N.T.S.

(ALL BAR DIMENSIONS OUT TO OUT)

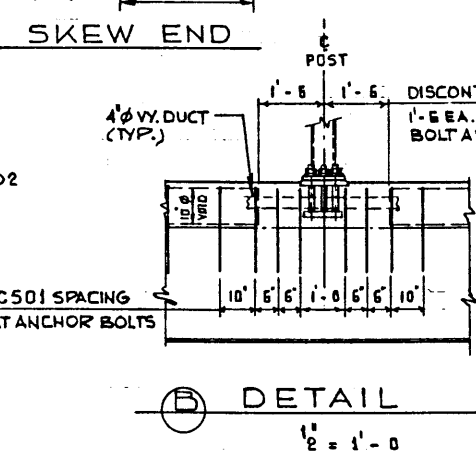


BAR LIST: FOR UNSKEWED GIRDER

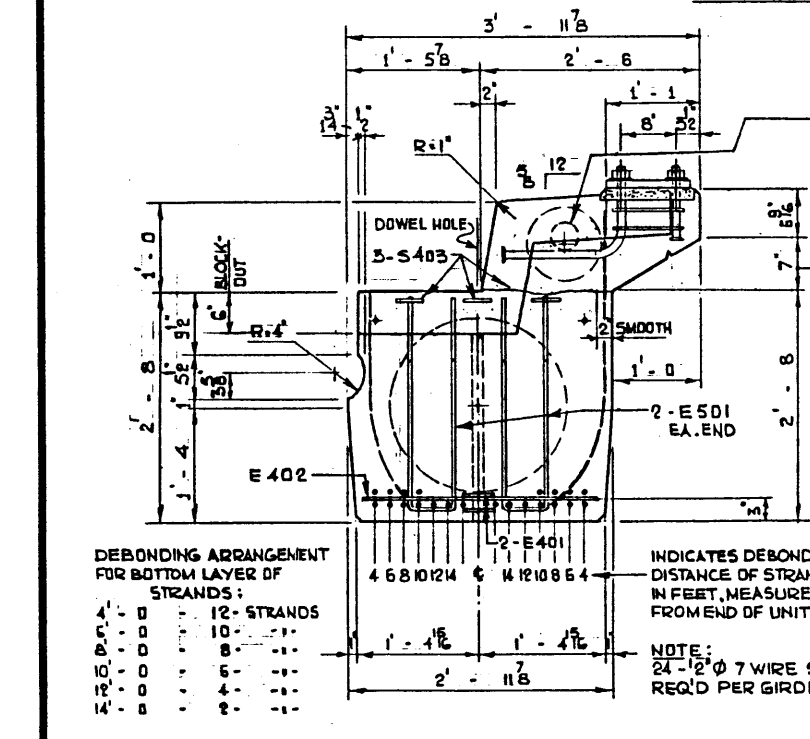
MARK	SIZE	NO.	TYPE	X	Y	LENGTH	WEIGHT
S 301	3	104	A			4'-3"	166
S 302	3	69	B			7'-11"	164
S 401	4	14	STR.			33'-4"	312
S 402	4	13	C			2'-0"	17
S 403	4	6	D	4'	5'-0"	10'-4"	41
S 501	5	106	D	2'-6"	8 1/2'	3'-11"	433
S 502	5	4	STR.			33'-6"	140
E 401	4	4	E			3'-4"	9
E 402	4	2	D	2'-8"	6'	3'-8"	5
E 501	5	4	F			7'-7"	32
C 401	4	10	STR.			33'-4"	223
C 501	5	53	G			5'-0"	276
C 502	5	53	H			2'-8"	147
							TOTAL LBS.: 1965



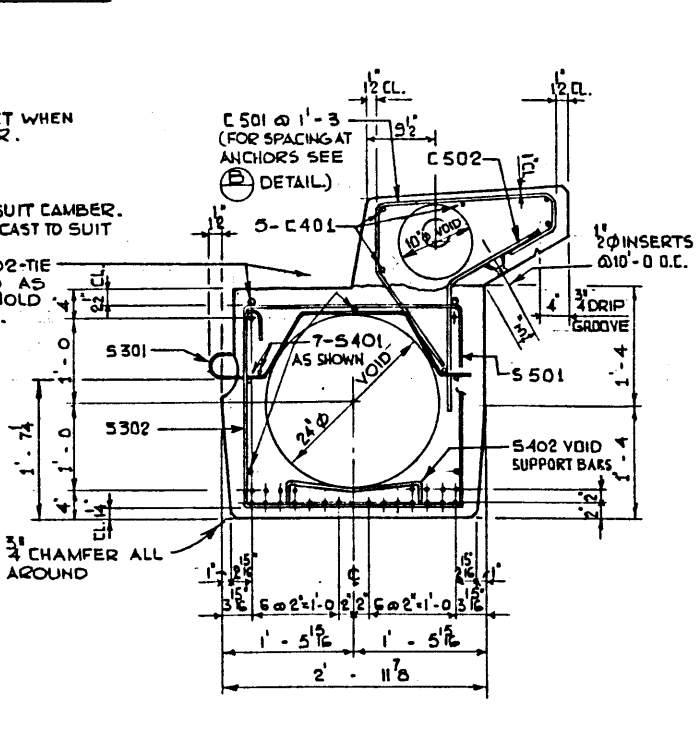
ELEVATION



SKEW END



END VIEW

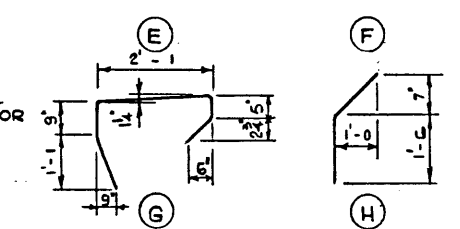


SECTION

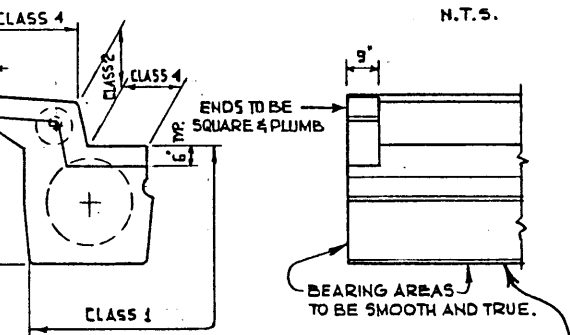
DEBONDING ARRANGEMENT FOR BOTTOM LAYER OF STRANDS:

4'-0"	12-STRANDS
6'-0"	10-STRANDS
8'-0"	8-STRANDS
10'-0"	6-STRANDS
12'-0"	4-STRANDS
14'-8"	2-STRANDS

NOTE: 24 - 1/2" 7 WIRE STRAND REQ'D PER GIRDER.



BAR SKEW



GIRDER FINISHES

GENERAL NOTES:

- DESIGN: A.A.S.H.O. 1973 SPECIFICATION.
- LOADING: 0.60 OF ONE WHEEL LINE OF AN HS 25.44 TRUCK PLUS FULL DEAD LOAD PLUS 2" WEARING SURFACE.
- ESTIMATED WEIGHT OF ONE GIRDER = 44.6 K + 17.7 K FOR CURB. TOTAL WEIGHT = 62.3 K.
- MATERIALS: CONCRETE SHALL BE OF STANDARD WEIGHT AGGREGATE WITH A MAXIMUM AGGREGATE SIZE OF 3/4". MINIMUM COMPRESSIVE STRENGTH SHALL BE 5,000 P.S.I. AT 28 DAYS. ENTRAINED AIR SHALL BE NOT LESS THAN 5%.
- PRESTRESSING STEEL SHALL BE 1/2" DIAMETER - 7 WIRE 270 K STRAND.
- FABRICATION: GIRDERS SHALL CONFORM TO THE REQUIREMENTS OF THE ALBERTA BRIDGE BRANCH SPECIFICATION B 190-64 FOR THE MANUFACTURE OF PRESTRESSED CONCRETE BRIDGE UNITS.
- REINFORCEMENT: DIAMETERS OF ALL BENDS SHALL CONFORM TO THE RECOMMENDED MINIMUMS AND ALL HOOKS, UNLESS OTHERWISE NOTED, SHALL CONFORM TO THE RECOMMENDED SIZES DETAILED IN THE A.C.I. MANUAL OF STANDARD PRACTICE FOR DETAILING REINFORCED CONCRETE STRUCTURES.
- PRESTRESSING STEEL: INITIAL TENSIONING LOAD = 28.91 K/STRAND. DESIGN LOAD = 22.40 K/STRAND.
- CONCRETE MUST ATAIN 5,000 P.S.I. COMPRESSIVE STRENGTH BEFORE THE PRESTRESSING FORCE IS TRANSFERRED.
- THE SURFACE OF GROUT KEYS AND END BLOCKOUTS SHALL BE SANDBLASTED.
- ANCHOR BOLT ASSEMBLIES SHALL BE CAST IN GIRDER AT SPACINGS AS REQUIRED.
- ALTERNATE HOLD DOWN DEVICES FOR PLACEMENT OF VOIDS WILL BE CONSIDERED.
- RECTION: LETTING FORCE AT EACH HOOK MUST BE NOT MORE THAN 35° FROM THE VERTICAL LINE AT ALL TIMES. GIRDER SURFACE MUST BE LEVEL AT ALL TIMES.

NO.	DATE	DESCRIPTION	BY

APPROVED

CHIEF BRIDGE ENGINEER

DATE

Albera HIGHWAYS AND TRANSPORT BRIDGE BRANCH

66'-0" TYPE 'VM'

32' CURB GIRDER

HS 25 LOADING

DWG. NO. 5-1110

DESIGNED	DRAWN BY	DATE	CHECKED BY	DATE	STREAM	LOCATION	HWY. NO.	SCALE	FILE NO.	SHEET	DWG. NO.
C.W.R.	P.SZ.	DEC.1973						SHOWN			5-1110