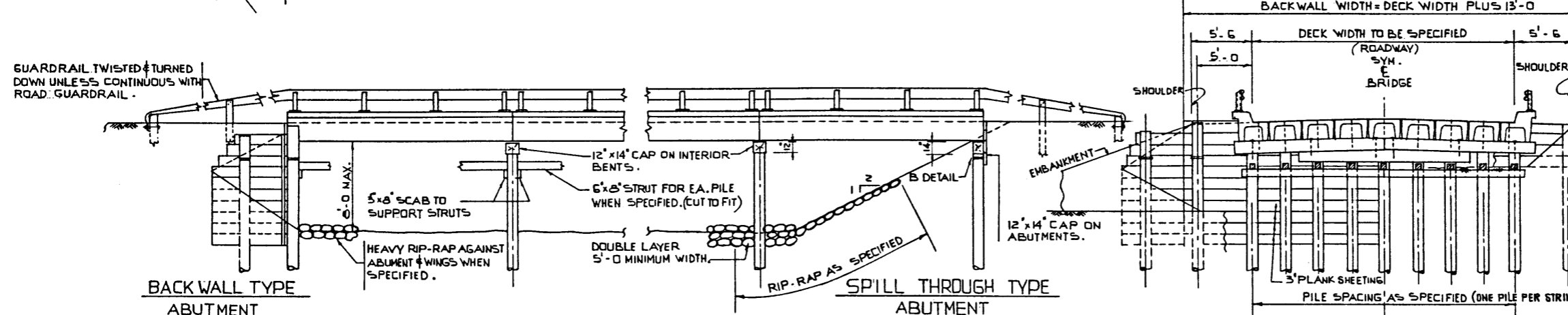


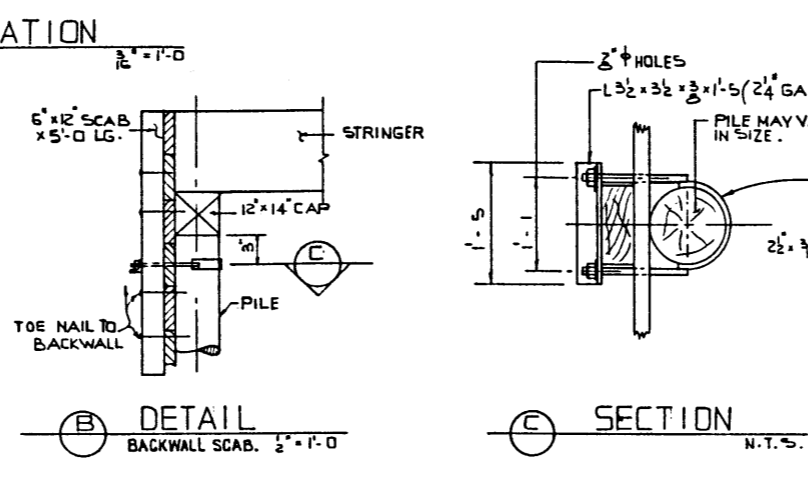
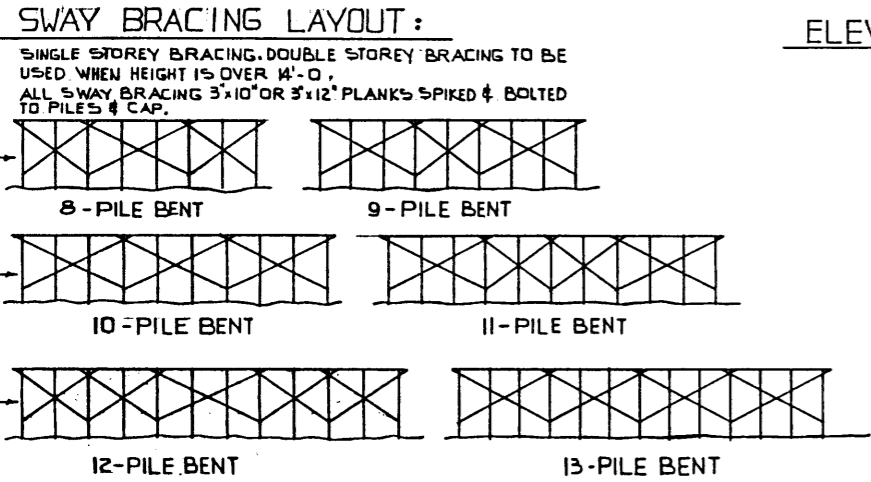
BILL OF HARDWARE

MARK	SIZE	TYPE	WASHERS	PLACING # NO. REQUIRED
1	3/4" x 22	DRIFTS		CAPS & SUBCAPS TO PILES
2	3/4" x 24	HEADLESS DRIFTS		STRINGER & CURBS TO CAPS 2 PER STRINGER 2 PER CURB
3	3/4" x 26	MACHINE BOLTS	2 - 3/8" O.G.	CAP SPLICE - 4 PER SPLICE
4	3/4" x 22			DOUBLE SWAY BRACE TO CAP
5	3/4" x 20			SINGLE SWAY BRACE TO CAP
6	3/4" x 7	FLEX BEAM BOLTS	1 - 3/8" LOCK	GUARDRAIL TO POST
7	3/4" x 14			GUARDRAIL SPACE-BY-SPACE

- ### GENERAL NOTES:
- PILE SPLICES TO BE DRIVEN A MIN. OF 5'-0" BELOW GROUND LEVEL.
 - PILES TO BE DRIVEN TO A MIN. OF 25 TONS BEARING CAPACITY.
 - HARDENED WASHERS ARE TO BE PLACED BETWEEN THE STRINGER CONNECTORS TO FILL UP ANY SPACE. THE 3/4" HIGH TENSILE BOLTS ARE TO BE TIGHTENED TO 300 FT. LBS. TORQUE.
 - CONNECTOR HOLES, LIFTING HOOK POCKETS AND DOWEL HOLES ARE TO BE FILLED WITH SAND-CEMENT GROUT EXCEPT USE HOT-POURED C190 ASPHALT IN COLD WEATHER.
 - FOR PRECAST STRINGER UNITS:
 - 20' VH : \$ 1096 & \$ 1097
 - 28' VH : \$ 1094 & \$ 1095
 - 33' VH : \$ 1092 & \$ 1093
 - 38' VH : \$ 1087 & \$ 1088
 - FOR BRIDGE FILLS SEE DWG. NO. S 829



- ### TREATMENT OF TIMBER - IMPORTANT:
- PILE TOPS UNDER CAPS SHALL BE COATED WITH 3 APPLICATIONS OF CREOSOTE OIL & THOROUGHLY COVERED WITH ROOFING PITCH.
 - EXPOSED PILE TOPS SHALL BE TREATED AS IN (a) & IN ADDITION SHALL BE COVERED WITH 20 GA. GALVANIZED SHEET IRON OF A SIZE 4" GREATER IN DIAMETER THAN THE PILE. NEATLY TRIM IRON, BEND DOWN & FASTEN TO PILE WITH GALVANIZED ROOFING NAILS.
 - TREATED TIMBER SHALL BE CAREFULLY HANDLED, SO AS TO AVOID BREAKING OF OUTER FIBERS AND BRUISING OR PENETRATING THE SURFACE. TOOLS TO BE USED ONLY ON ENDS OF TIMBER.
 - ALL CUTS AND ABRASIONS IN TREATED TIMBER SHALL AFTER CAREFUL TRIMMING BE COATED WITH 2 APPLICATIONS OF CREOSOTE AND THEN BE THOROUGHLY COVERED WITH HOT ROOFING PITCH.
 - TREATED PILES MUST NOT BE DAPPED FOR SWAY BRACING IN THE FIELD.
 - BOLT HOLES BORED AFTER TREATMENT SHALL BE CAREFULLY TREATED WITH CREOSOTE. ANY UNFILLED HOLES SHALL BE SEALED WITH CREOSOTED PLUGS.



SECTION

NO.	DATE	DESCRIPTION	BY

APPROVED: *[Signature]* CHIEF BRIDGE ENGINEER
DATE: April 8, 1974

DESIGNED	DRAWN BY	DATE	CHECKED BY	DATE	STREAM	LOCATION	HWY. NO.	SCALE	FILE NO.	SHEET	DWG. NO.
J. R. CHANNON	L. W. KOHLMANN	FEB. 1974									S-1111

Alberta HIGHWAYS AND TRANSPORT BRIDGE BRANCH
STANDARD "VH" PRECAST BRIDGES WITH T.T. SUBSTRUCTURE HS 25 LOADING SHEET # 1