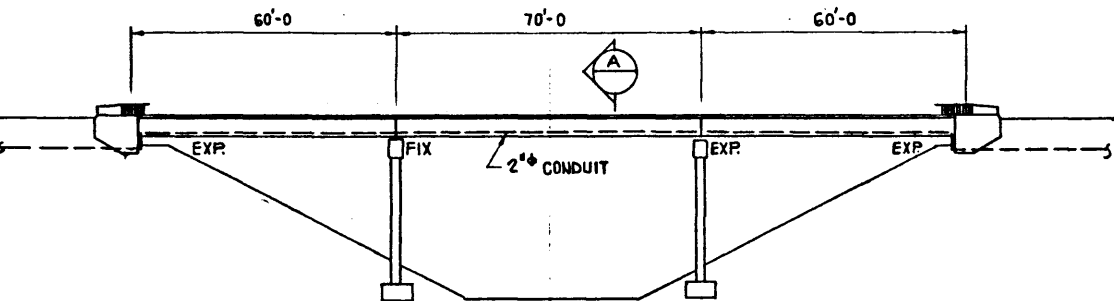
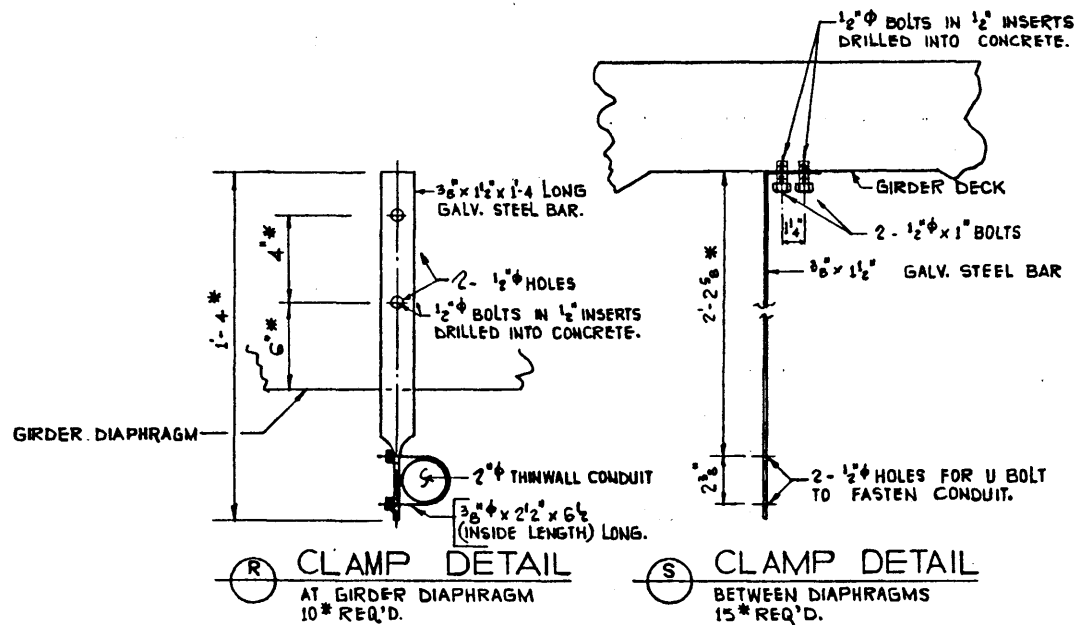
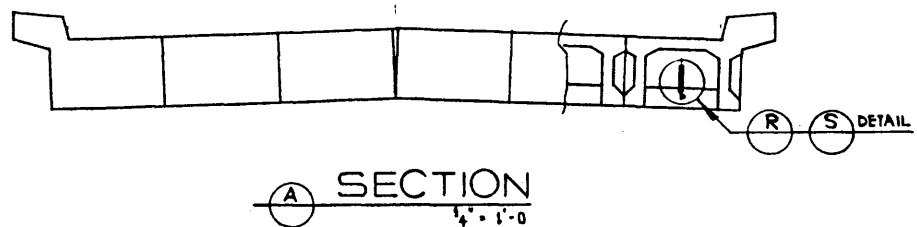


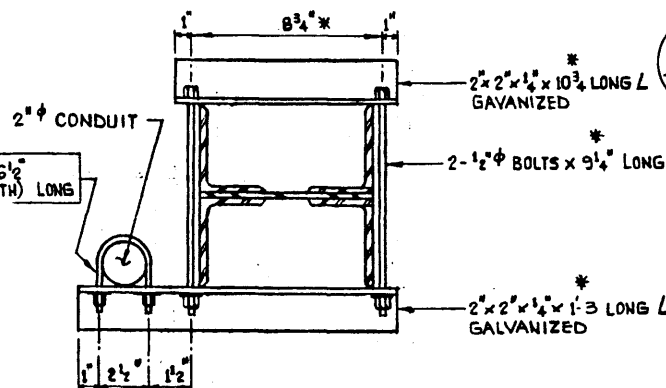
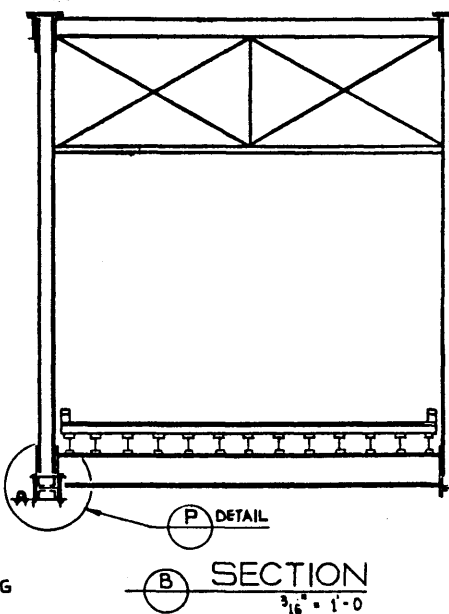
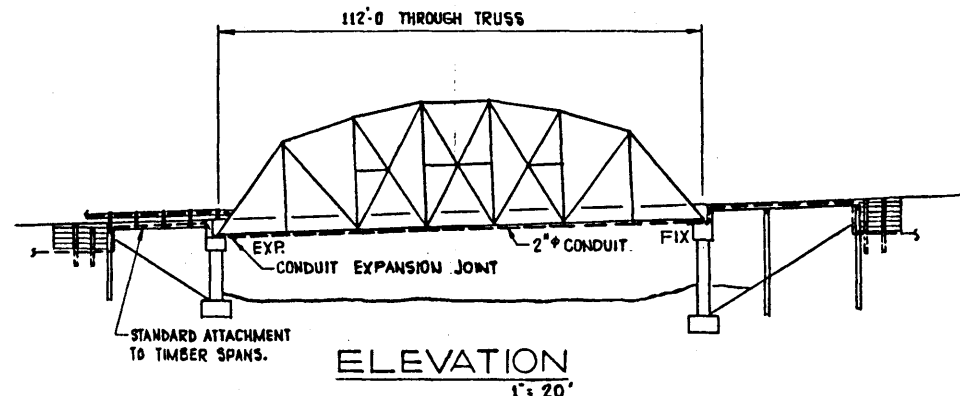
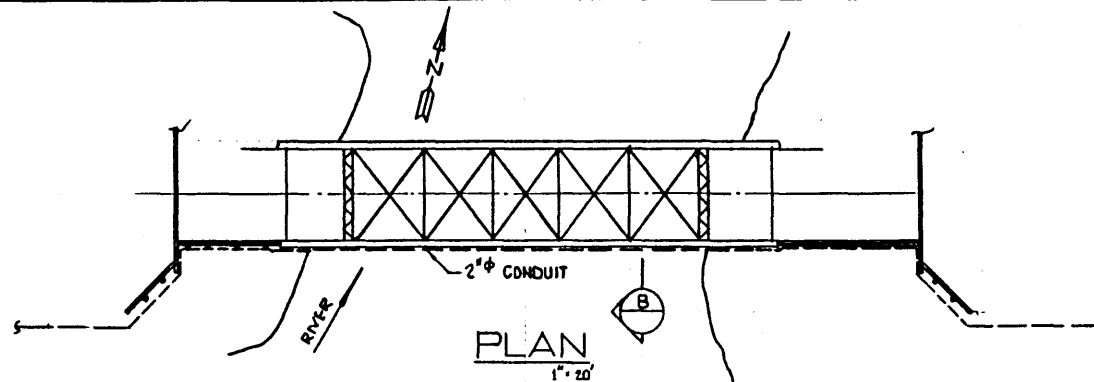
PLAN
1" = 20'



ELEVATION
1" = 20'



GIRDER BRIDGE N.T.S.



CONDUIT ATTACHMENT TO BOTTOM CHORD MAX. SPACING @ 8'-0".

P DETAIL
15" REQ'D.

NOTE: * THESE DIMENSIONS WILL TYPICALLY BE DIFFERENT FOR EACH BRIDGE.

GENERAL NOTES:

- A. INFORMATION REQUIRED
- THREE PRINTS OF A DRAWING DETAILING THE PROPOSAL ARE REQUIRED. ONE WILL BE RETURNED TO THE APPLICANT WITH COMMENTS OR APPROVAL.
- THE DRAWING IS TO INDICATE CLEARLY THE SIZE AND TYPE OF LINE AND ITS LOCATION ON THE BRIDGE. THIS WILL GENERALLY INVOLVE THE OUTLINE OF A PLAN VIEW, ELEVATION VIEW AND CROSS-SECTION VIEW OF THE BRIDGE. INDICATE THE ORIENTATION OF THE MAIN VIEW, EG. NORTH ARROW ON PLAN VIEW.
- THE LOCATION OF THE CONDUIT WHERE IT LEAVES THE BRIDGE IS TO BE SHOWN. SHOW WHERE IT ENTERS THE GROUND AND HOW ABUTMENT WINGS OR OTHER OBSTRUCTIONS ARE CLEARED.
- SHOW DETAILS OF ALL ATTACHMENT FITTINGS AND HOW THEY ARE FASTENED TO THE BRIDGE. SHOW LOCATIONS (SPACING) OF THE ATTACHMENTS.
- SHOW LOCATION OF EXPANSION JOINTS IN CONDUIT.
- B. BRIDGE BRANCH RESTRICTIONS

1. GENERAL
- ATTACHMENT BY CLAMPING ONTO BRIDGE MEMBERS IS PREFERRED.
- WELDING ON OR DRILLING INTO STEEL IS NOT PERMITTED.
- DRILLING INTO PRESTRESSED GIRDER LEGS IS NOT PERMITTED.
- EXPLOSIVE-DRIVEN ATTACHMENTS TO CONCRETE OR STEEL ARE NOT PERMITTED.
- CONCRETE INSERTS DRILLED INTO DECK CONCRETE WILL BE CONSIDERED IF OTHER MEANS OF ATTACHMENT ARE NOT FEASIBLE.
- MAKE ALLOWANCES FOR EXPANSION AT THE SAME LOCATIONS AS THE BRIDGE.
- ALL METAL ATTACHMENTS ARE TO BE GALVANIZED.
2. GIRDER BRIDGES
- GENERALLY, CONDUIT IS TO BE CONCEALED BETWEEN GIRDERS, I.E. ATTACHMENT ON OUTSIDE OF BRIDGE ON OR UNDER THE CURB IS TO BE AVOIDED.
3. TRUSS BRIDGES
- CONDUIT IS NOT TO BE LAID INTO THE BOTTOM CHORD OF THE TRUSS BECAUSE OF POSSIBLE INTERFERENCE WITH BRIDGE MAINTENANCE OPERATIONS.
- A GENERALLY ACCEPTABLE ATTACHMENT IS ONE THAT HAS A BRACKET CLAMPED TO THE BOTTOM CHORD AND PROJECTING OUTWARD. THE CONDUIT IS FASTENED TO THIS PROJECTION.
4. STANDARD BRIDGES OR SPANS
- TELEPHONE ATTACHMENT MAY BE MADE AS PER 4-1-107 STANDARD PLAN S-1427

TRUSS BRIDGE

WORK THIS DRAWING IN CONJUNCTION WITH DRAWING S-1145

DESIGNED R. W. KORNELSEN		DRAWN BY F. W. BUDA		DATE NOV. /73		CHECKED BY		DATE		STREAM		LOCATION		HWT. NO.		SCALE AS SHOWN		FILE NO.		SHEET OF		DWG. NO. S-1114	
REVISIONS NO. DATE DESCRIPTION BY 21 AUG 79 GENERAL NOTES CWP 14 JAN 76 NOTE ADDED CWP												APPROVED F. W. BUDA CIVIL ENGINEER DATE Aug 12, 1974		PROVINCE OF ALBERTA DEPARTMENT OF HIGHWAYS AND TRANSPORT BRIDGE BRANCH TELEPHONE CONDUIT ATTACHMENT SAMPLE DRAWING No. 1									