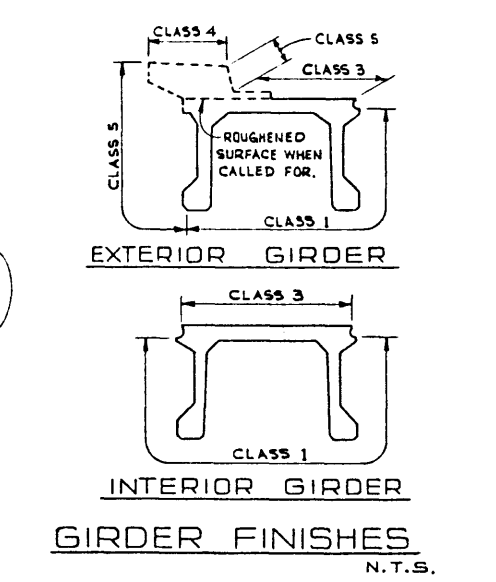
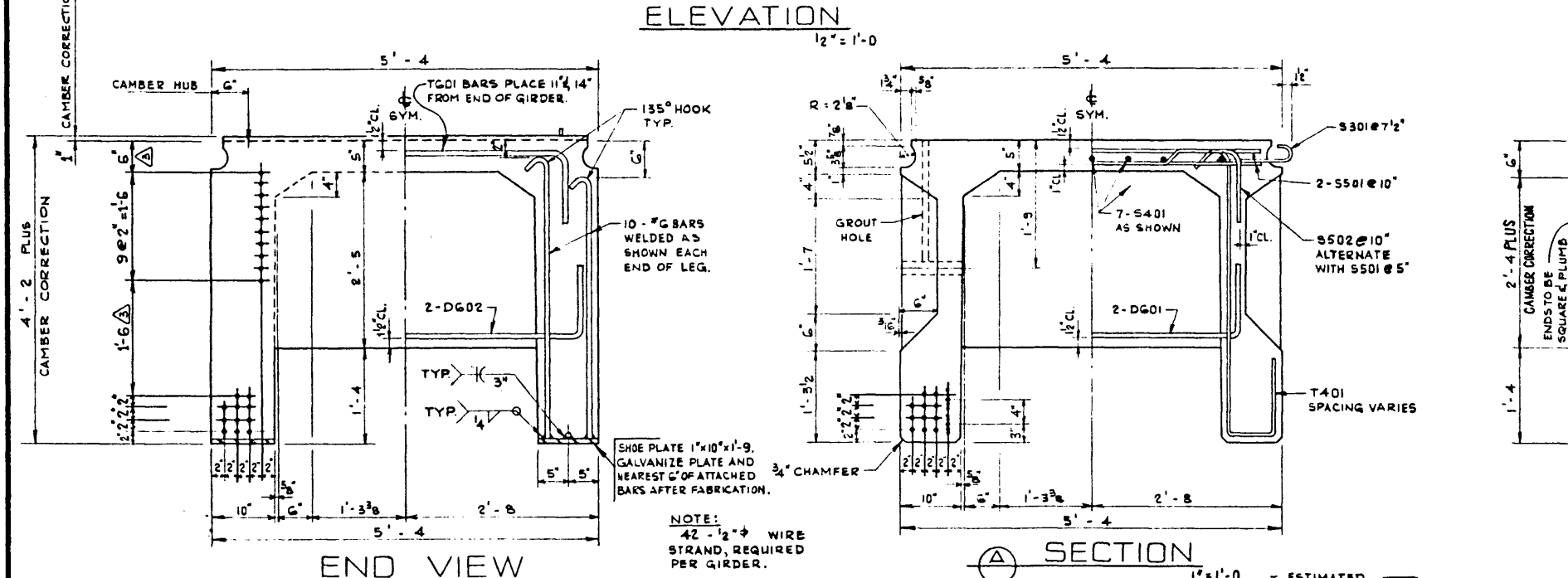


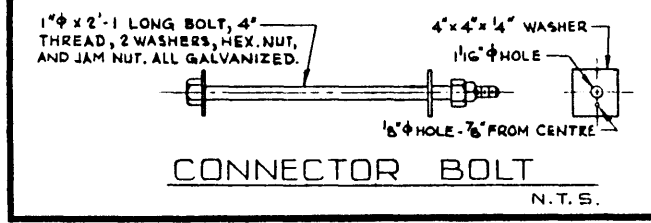
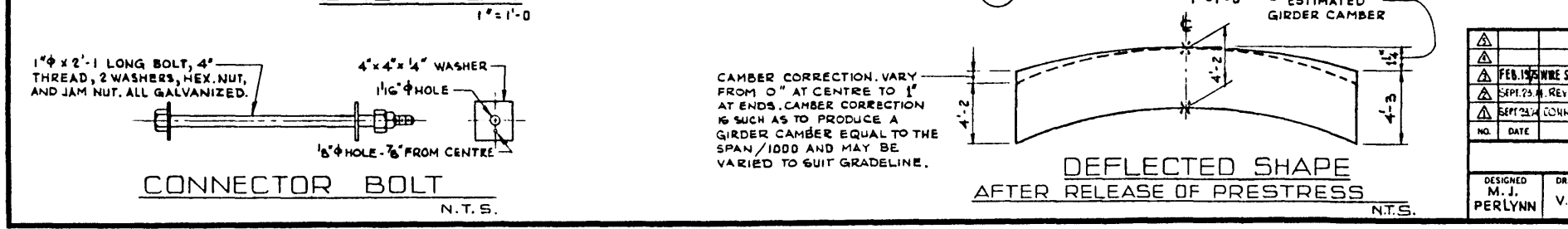
BAR LIST: FOR UNSKEWED GIRDER

MARK	SIZE	NO.	TYPE	X	Y	LENGTH	WEIGHT
S 301	3	332	C			1'-6	187
S 401	4	21	STR.			35'-7	499
S 502	5	126	B			6'-4	832
S 501	5	252	STR.			4'-9	1,248
T 401	4	330	A			6'-2	1,359
T 402	4	14	E			3'-0	28
T 601	6	4	D	4'-6		6'-6	39
D 601	6	6	D	4'-2		6'-2	56
D 602	6	4	D	5'-0		7'-0	42

TOTAL LBS: 4,290



- GENERAL NOTES:
- DESIGN:
- A. A. S. H. O. 1973 SPECIFICATION WITH ALLOWABLE FINAL CONCRETE STRESS = 350 P. S. I. IN TENSION, AND WEB REINFORCEMENT ACCORDING TO ACI 318-71 (NOT LESS THAN A.A.S.H.O. MINIMUM).
  - LOADING: 0.90 OF ONE WHEEL LINE OF AN HS 25-44 TRUCK PLUS FULL DEAD LOAD PLUS 2 1/2" WEARING SURFACE.
- MATERIALS:
- CONCRETE SHALL BE MANUFACTURED USING LIGHTWEIGHT COARSE AGGREGATE AND SAND FINES. LIGHTWEIGHT AGGREGATE SHALL CONFORM TO THE REQUIREMENTS OF ASTM SPECIFICATION C 330 WITH MAXIMUM AGGREGATE SIZE OF 3/4". MINIMUM COMPRESSIVE STRENGTH SHALL BE 5,000 P. S. I. AT 28 DAYS. UNIT WEIGHT OF THE CONCRETE SHALL BE 120 LBS. PER CUBIC FOOT PLUS OR MINUS 3% IN THE PLASTIC STATE. ENTRAINED AIR SHALL BE NOT LESS THAN 3%.
  - PRESTRESSING STEEL SHALL BE 1/2" DIAMETER - 7 WIRE 270 K STRAND.
- FABRICATION:
- GIRDERS SHALL CONFORM TO THE REQUIREMENTS OF THE ALBERTA BRIDGE BRANCH SPECIFICATION B 190-0 FOR THE MANUFACTURE OF PRESTRESSED CONCRETE BRIDGE UNITS.
  - REINFORCEMENT: DIAMETERS OF ALL BENDS SHALL CONFORM TO THE RECOMMENDED MINIMUM AND ALL HOOKS, UNLESS OTHERWISE NOTED, SHALL CONFORM TO THE RECOMMENDED SIZES DETAILED IN THE A. C. I. MANUAL OF STANDARD PRACTICE FOR DETAILING REINFORCED CONCRETE STRUCTURES.
  - PRESTRESSING STEEL: INITIAL TENSIONING LOAD = 28.73 K/STRAND DESIGN LOAD = 19.50 K/STRAND
  - CONCRETE MUST ATTAIN 4,000 P. S. I. COMPRESSIVE STRENGTH BEFORE THE PRESTRESSING FORCE IS TRANSFERRED.
  - GALVANIZING SHALL BE IN ACCORDANCE WITH ASTM SPECIFICATION A 153.
  - SHEAR KEYS AND BLOCKOUTS SHALL BE SANDBLAST ROUGHENED BY THE GIRDER FABRICATOR TO THE APPROVAL OF THE ENGINEER.
  - RIBS AND CONNECTOR BOLT HOLES SHALL BE OMITTED ON OUTSIDE LEGS OF EXTERIOR GIRDERS.
  - EXTERIOR GIRDER DIAPHRAGMS SHALL BE SPACED AT 17'-6 MAXIMUM.
  - CONNECTOR BOLTS, WASHERS, HEX NUTS, JAM NUTS AND RODOFOAM GASKETS SHALL BE SUPPLIED WITH THE GIRDERS.
- ERECTION:
- LIFTING FORCE AT EACH HOOK MUST BE VERTICAL AT ALL TIMES. GIRDER SURFACE MUST BE LEVEL AT ALL TIMES.



APPROVED

PROVINCE OF ALBERTA  
DEPARTMENT OF HIGHWAYS AND TRANSPORT  
BRIDGE BRANCH

PRESTRESSED CONCRETE  
105'-0 TYPE VF-50 GIRDER

NO.	DATE	DESCRIPTION	BY
1	FEB. 1974	WIRE STRAND DIMENSIONS END VIEW	J.C.Y.
2	SEPT. 23, 74	REVISED NO. OF DIAPHRAGM BARS	M.J.P.
3	SEPT. 23, 74	CONNECTOR BOLT SPACING CHANGED	M.J.P.

DESIGNED	DRAWN BY	DATE	CHECKED BY	DATE	STREAM	LOCATION	HWY. NO.	SCALE	FILE NO.	SHEET	DWG. NO.
PERLYNN	V. G. B.	JULY - 74						SHOWN		5-1123	