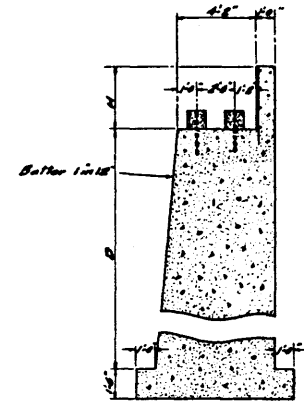
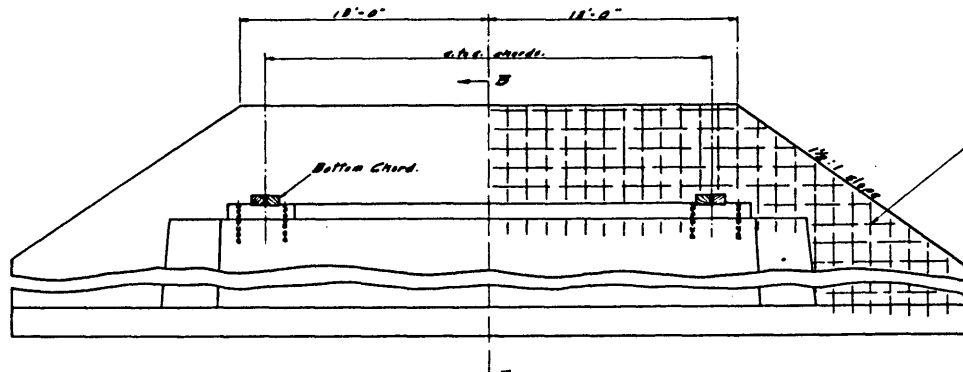
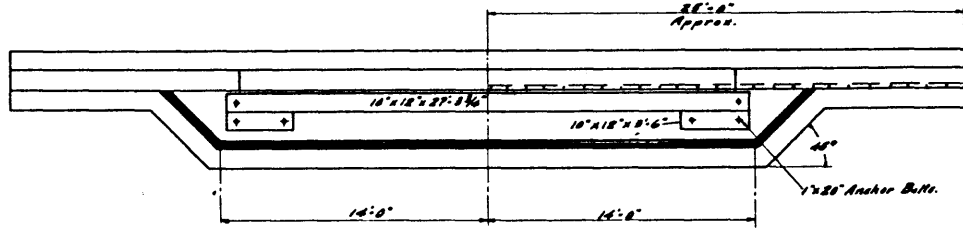


**TYPICAL ABUTMENT  
FOR  
70' & 96' SPAN  
TIMBER TRUSS BRIDGES**



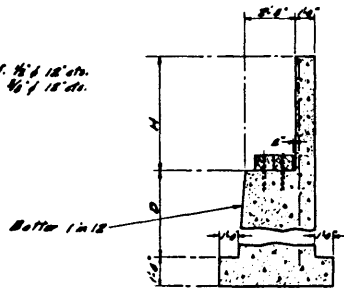
**SECTION A-A.**



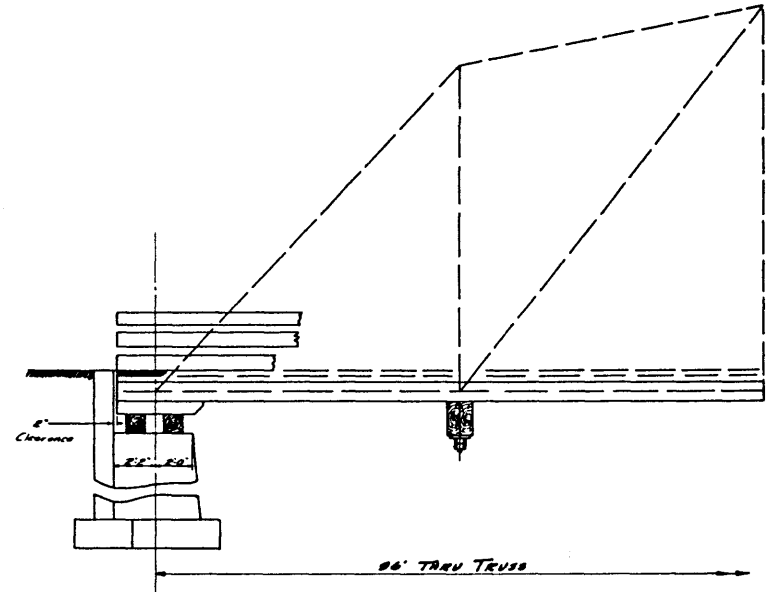
**TYPICAL ABUTMENT  
FOR  
48' SPAN PONY TRUSS BRIDGE**

**NOTES:-**

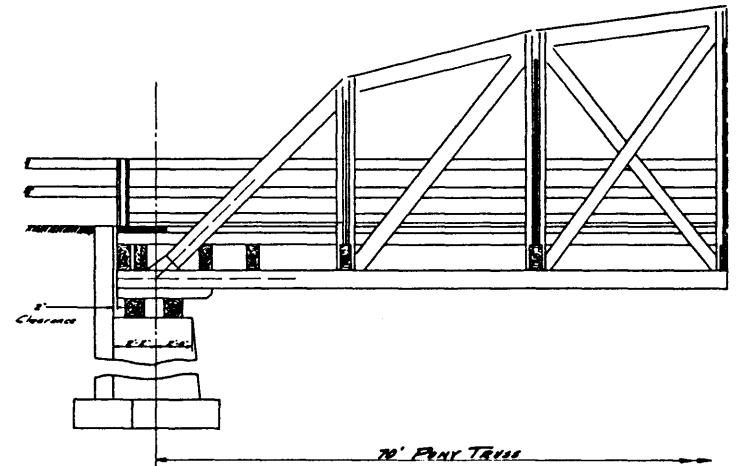
HEIGHT OF BACKWALL "H" TO SUIT DECK HEIGHT OF PARTICULAR BRIDGE BEING INSTALLED. BACKWALL TO BE POURED AFTER BRIDGE INSTALLED.  
DEPTH OF FOOTING "D" DEPENDENT ON CHARACTERISTICS OF SITE & TO BE SUCH AS TO ENSURE SOLID FOUNDATION.  
CONCRETE TO BE 1:2:4 MIX.



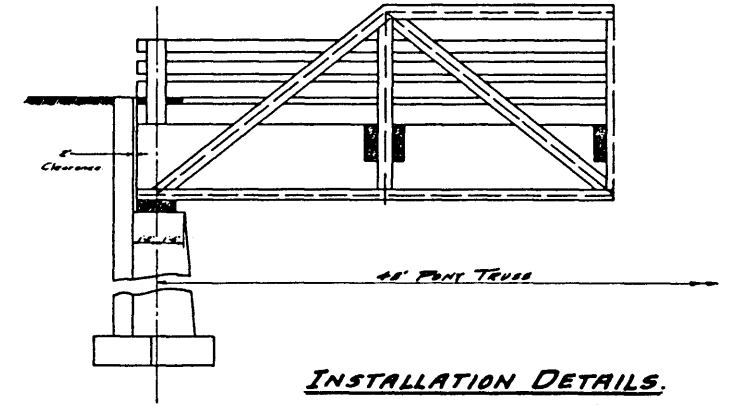
**SECTION B-B.**



**96' TRUSS**



**70' PONY TRUSS**



**48' PONY TRUSS**

**INSTALLATION DETAILS.**

**S-1141**

EASTERN ROCKIES FOREST CONSERVATION BOARD					DRAWN	
RESERVE	HIGHWAY	SECTION	PROJECT NO.	SCALE	DATE	BY
CROW'S NEST.	CROW TRUNK.	COLEMAN SAVANNA CRK.	60-109.	1/4" = 1'-0".	07-2-40	A. P. Link.
TYPICAL CONCRETE ABUTMENTS FOR TIMBER TRUSS BRIDGES					ISSUE	DRAWING NO.
					1888	B.I.-500.