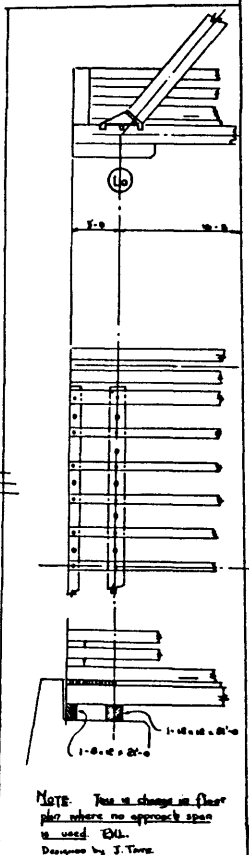
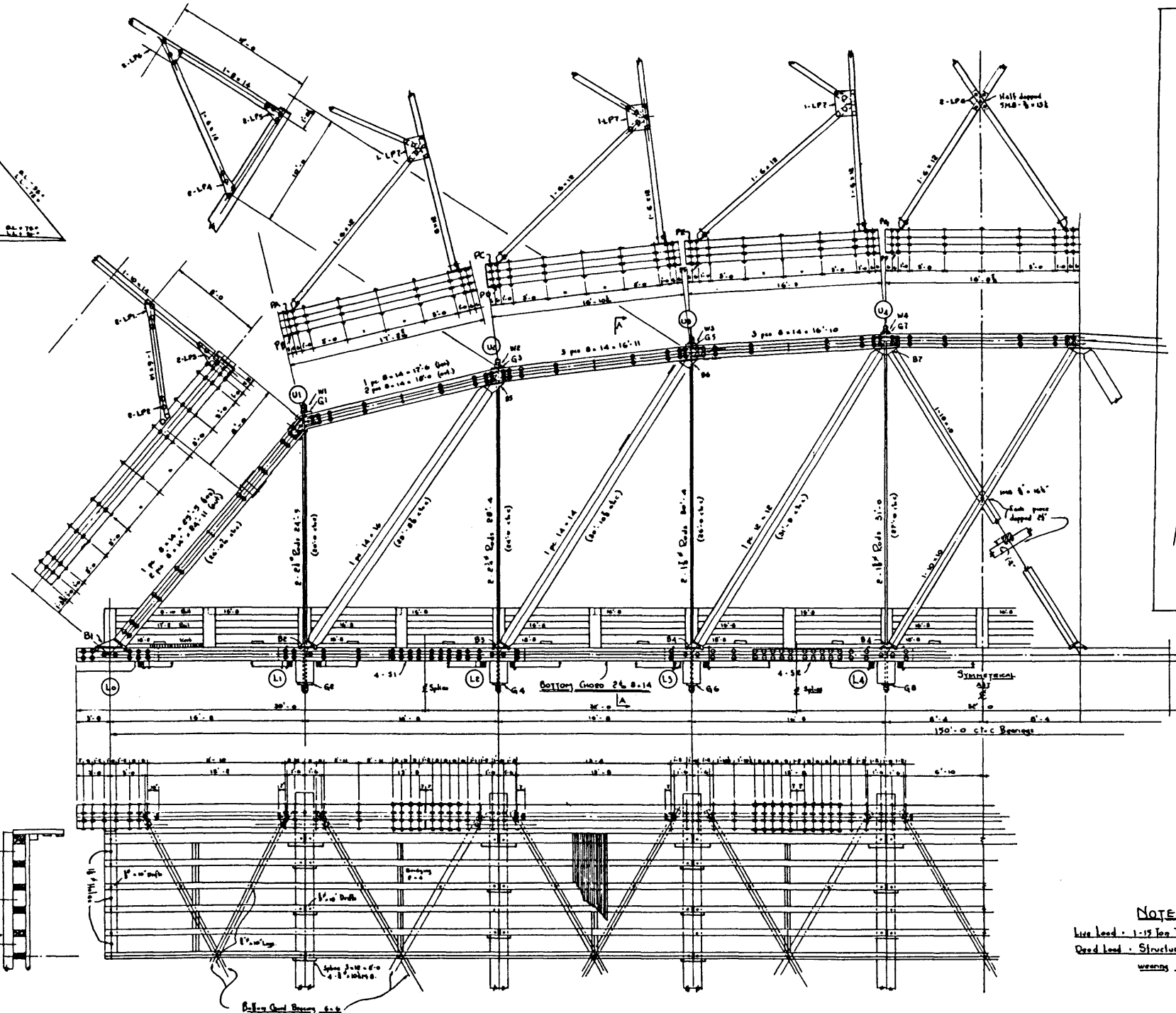
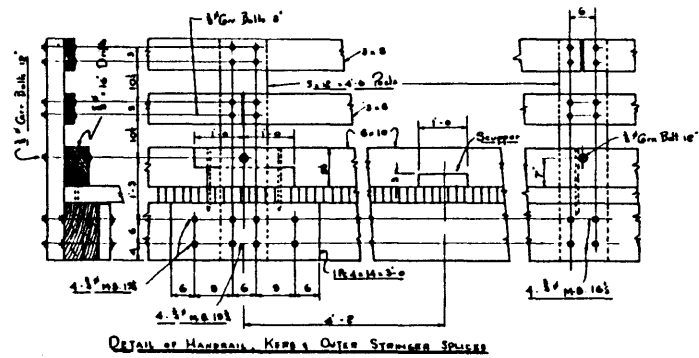
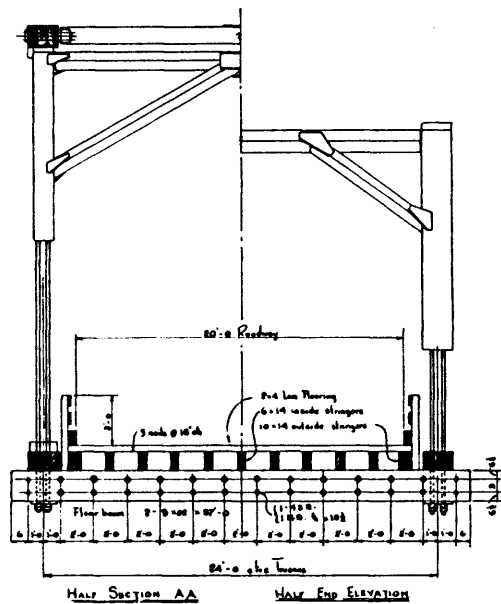


CAMBER DIAGRAM

STRESS DIAGRAM



NOTES

Live Load - 1-19 ton Truck or 20 lbs/sq. ft.

Dead Load - Structure + 25 lbs/sq. ft. for wearing surface on deck.

NOTE

In all cases where bolt passes through 2 steel plates place M.I. washer under nut

Example:

EASTERN ROCKIES FOREST  
CONSERVATION BOARD

150' SPAN  
TIMBER TRUSS BRIDGE

20' Planes      15 Ton Truss Load

Design By J. Torr. May 1950

Truss by R. Nelson Denny NE B 305

Good work.