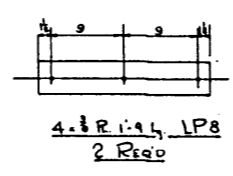
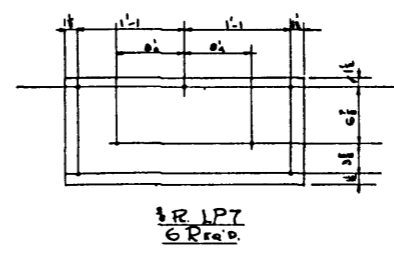
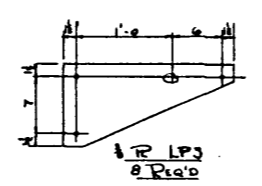
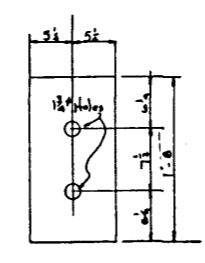
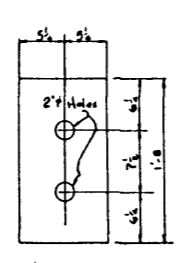
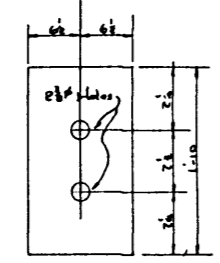
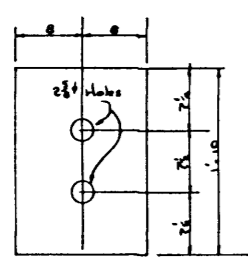
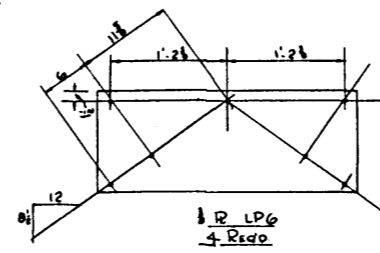
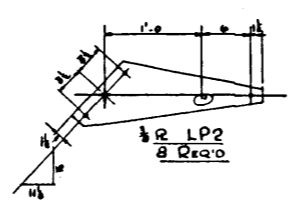


|    |                      |  |             |
|----|----------------------|--|-------------|
|    | 6 R1 and R2          |  | 6 R3 and R4 |
|    | 4 Nuts per Rod       |  |             |
| R1 | 2 1/2" Rod 24'-4     |  | 8 Reqd      |
| R2 | 2 1/2" Rod 28'-2 1/2 |  | 8           |
| R3 | 1 3/4" Rod 30'-0     |  | 8           |
| R4 | 1 3/4" Rod 30'-11    |  | 8           |



Note: Holes 1 1/2" except as noted.

EASTERN ROCKIES FOREST  
 CONSERVATION BOARD  
 150' SPAN  
 TIMBER TRUSS BRIDGE  
 20' ROADWAY 15' TRUSS LENGTH  
 Design By J. T. M. May 1950  
 Thomas FH Loomis Drawing No. B 3030-4  
 SHEET 4 of 4

S-1144