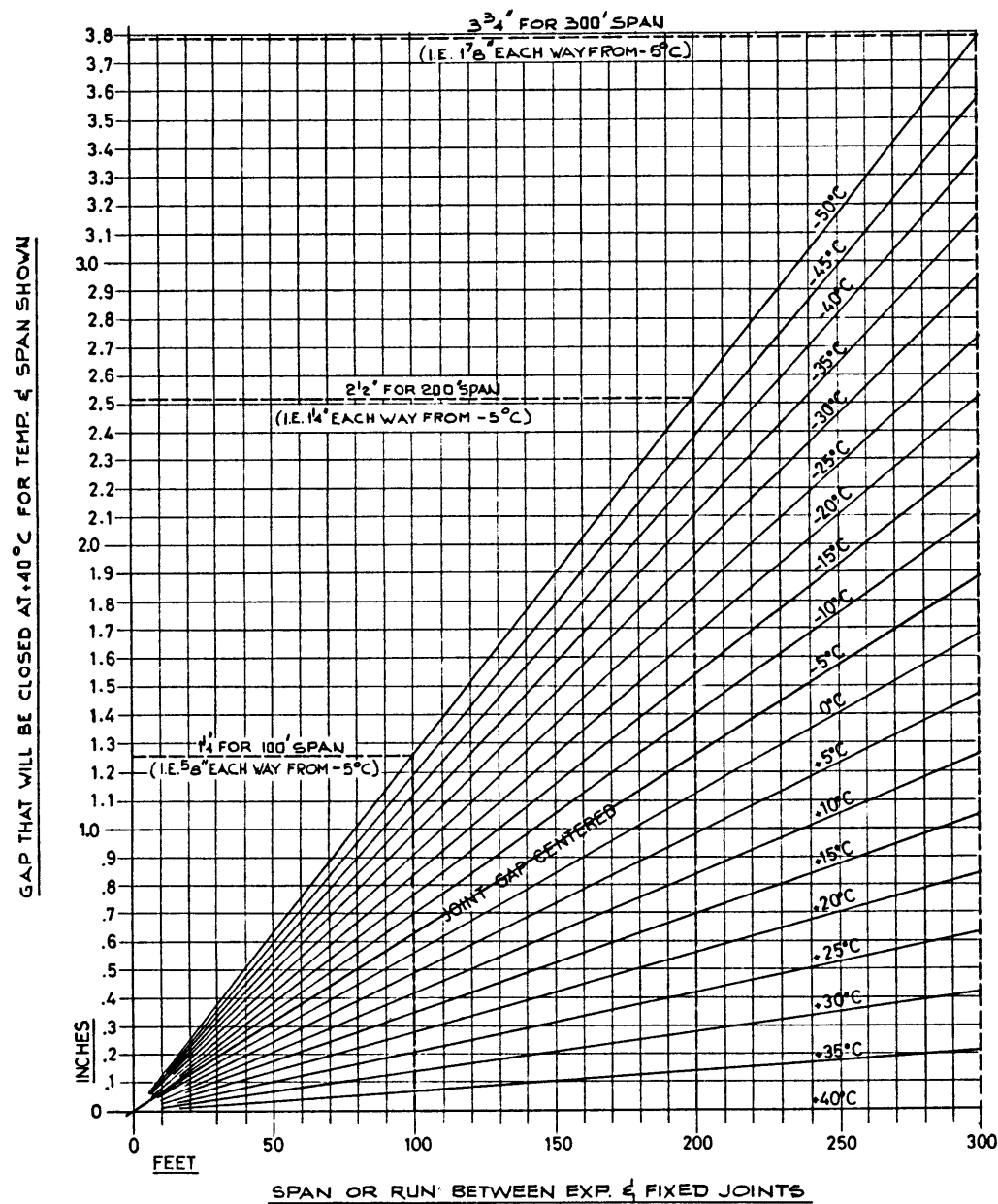
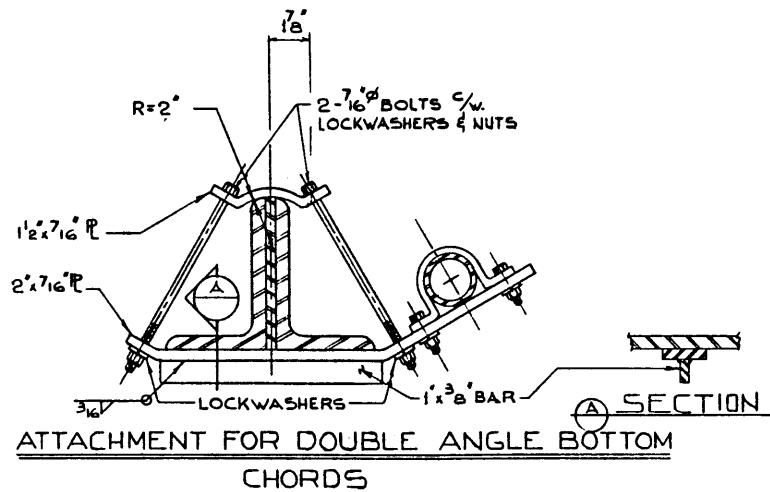


STEEL EXPANSION CHART

STEEL EXPANSION FOR GIVEN LENGTHS.
TEMPERATURE RANGE FROM -50°C TO +40°C
 $\alpha_s = 0.000011$ PER °C



GAP THAT WILL BE CLOSED AT +40°C FOR TEMP. & SPAN SHOWN



NOTES: N.T.S.
BOLT LENGTHS AND BOTTOM BRACKET LENGTH WILL TYPICALLY VARY TO FIT THE MEMBERS TO WHICH THEY ARE TO BE ATTACHED. DIMENSIONS TO BE SHOWN ON "APPLICATION FOR ATTACHMENT" DRAWINGS. SPACING AND DETAILS OF BRACKETS TO BE SELECTED TO CARRY THE ANTICIPATED LOADING.

- NOTES:
- FOR CONDUIT ATTACHMENTS (STEEL) ADD 25% TO THE INDICATED GAP REQUIRED AS A MARGIN FOR SAFETY.
 - FOR ALUMINUM CONDUIT MULTIPLY GAP BY 2 FOR ANY GIVEN TEMPERATURE.
 - EXPANSION JOINT MUST BE SET AT CORRECT GAP FOR TEMPERATURE AT TIME OF INSTALLATION. JOINT GAP TO BE CENTERED AT -5°C.

WORK THIS DRAWING IN CONJUNCTION WITH DRAWING S-1114

<table border="1"> <tr><td>NO.</td><td>DATE</td><td>DESCRIPTION</td><td>BY</td></tr> <tr><td> </td><td> </td><td> </td><td> </td></tr> </table>				NO.	DATE	DESCRIPTION	BY					APPROVED CHIEF BRIDGE ENGINEER DATE FEB 16/75		Alberta HIGHWAYS AND TRANSPORT BRIDGE BRANCH TELEPHONE CONDUIT ATTACHMENT SAMPLE DRAWING No. 2			
NO.	DATE	DESCRIPTION	BY														
DESIGNED C.W.P. DRAWN BY T.S. DATE JAN 1976 CHECKED BY DATE STREAM LOCATION HWY. NO. SCALE SHOWN FILE NO. SHEET 2 OF 2 DWG. NO. S-1145																	