

MARK	NO.	TYPE	LENGTH	WEIGHT
EQ01	*G	44 STR.	11'-6"	760.0
F301	*S	26 CIRC.	16'-9"	167.8
TOTAL				927.8

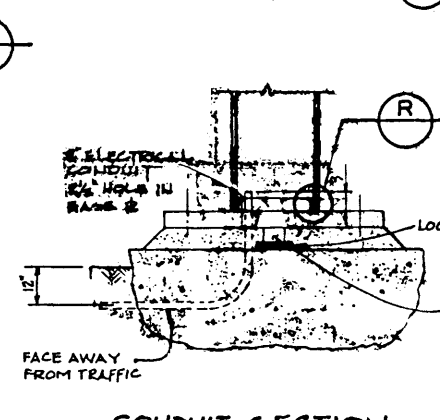
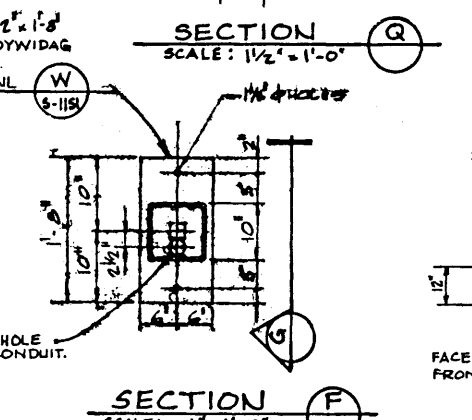
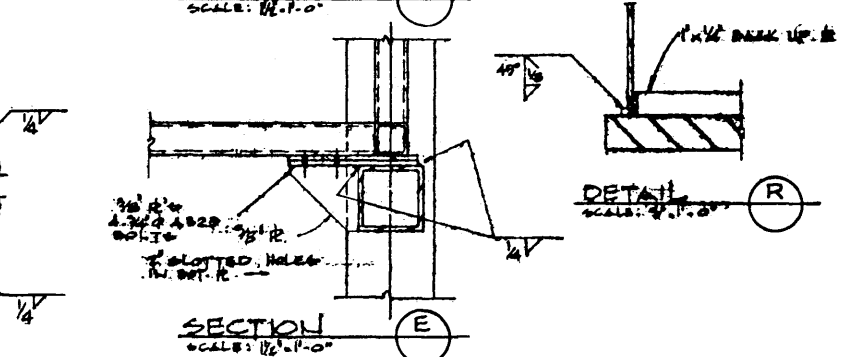
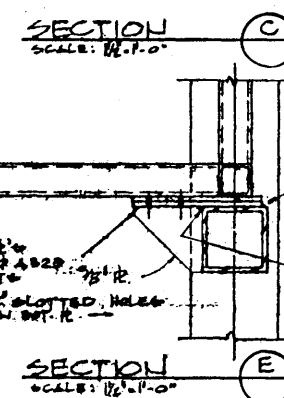
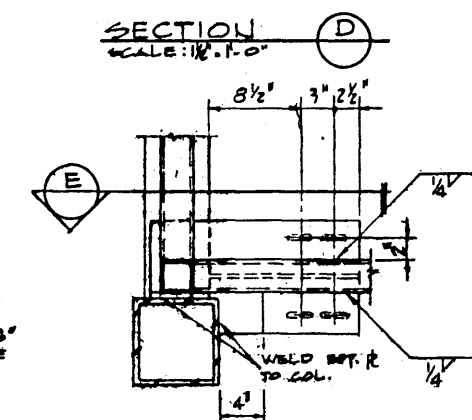
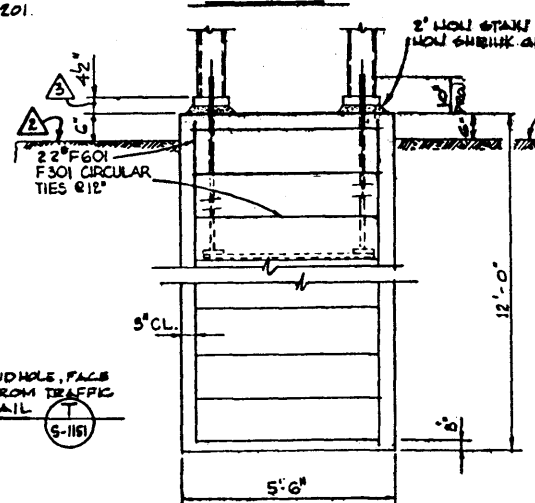
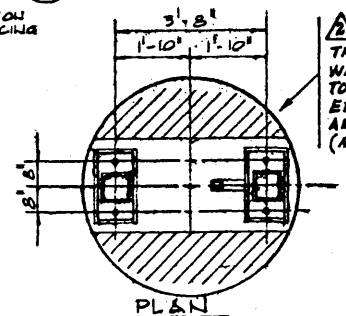
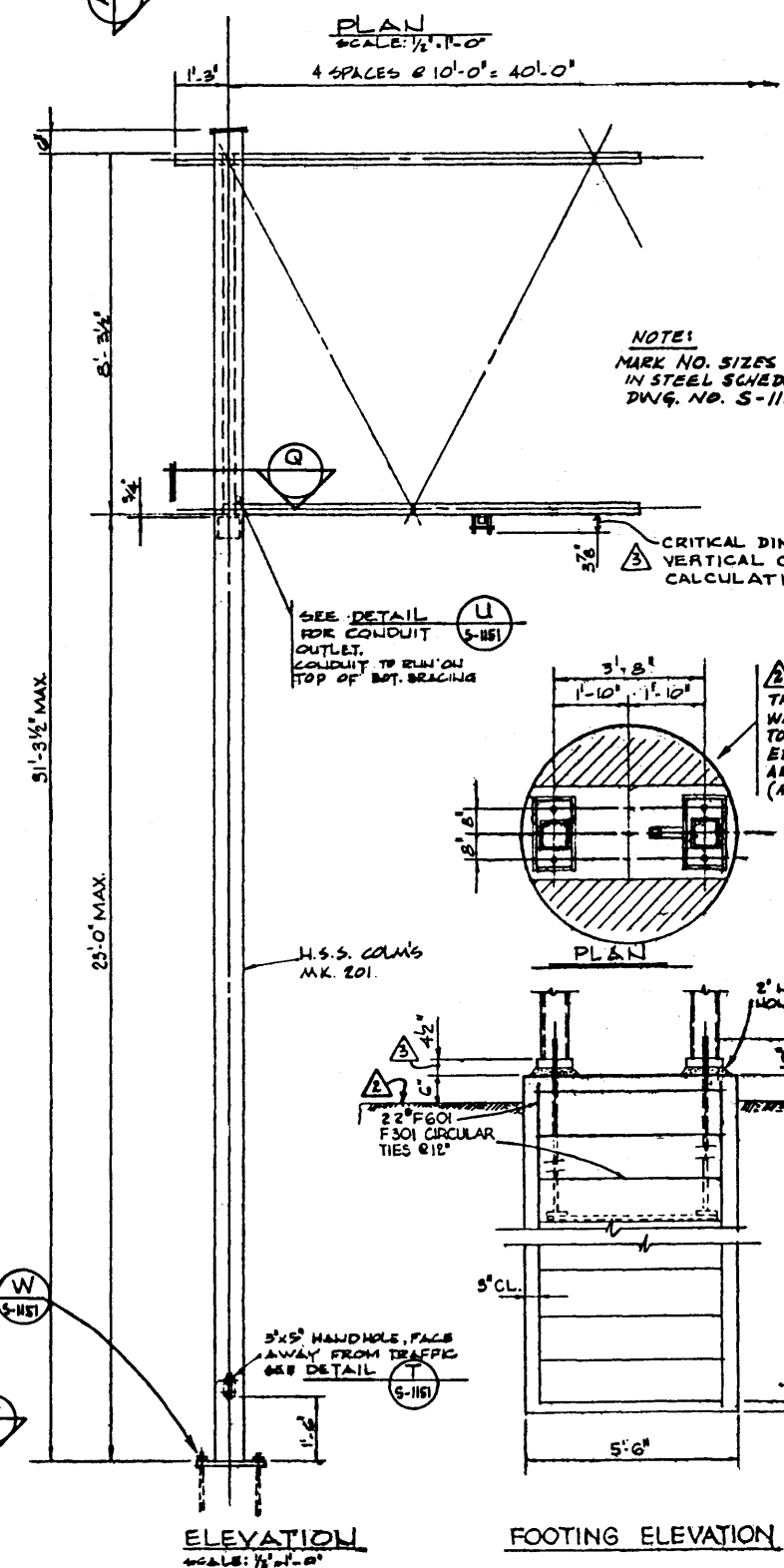
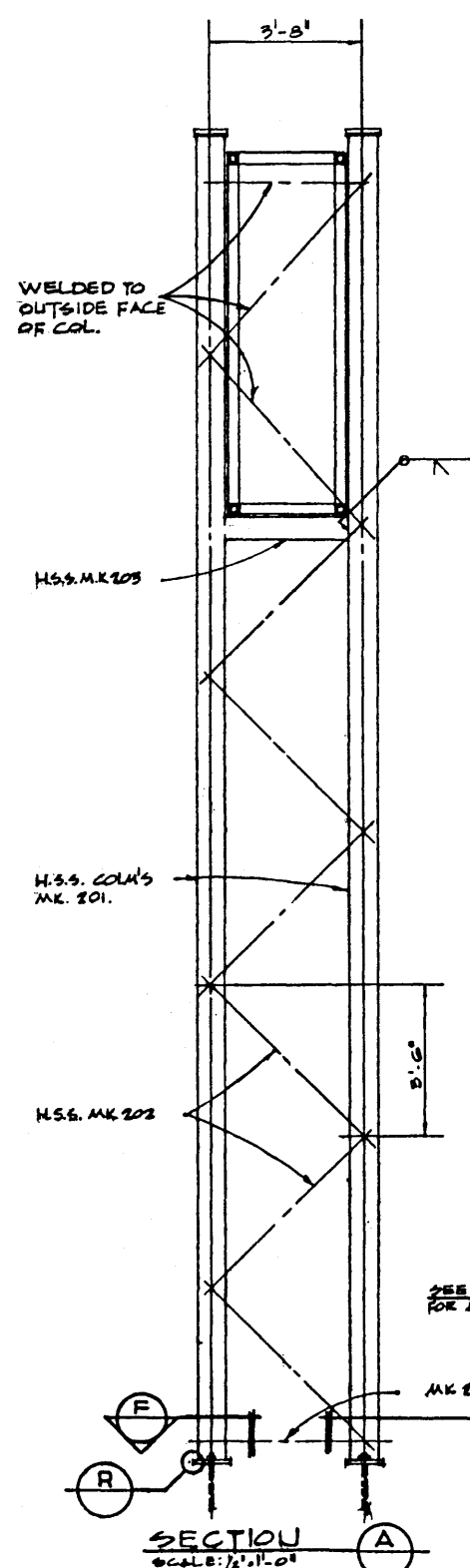
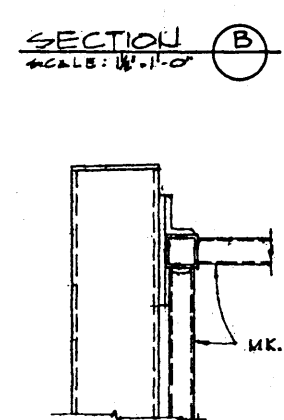
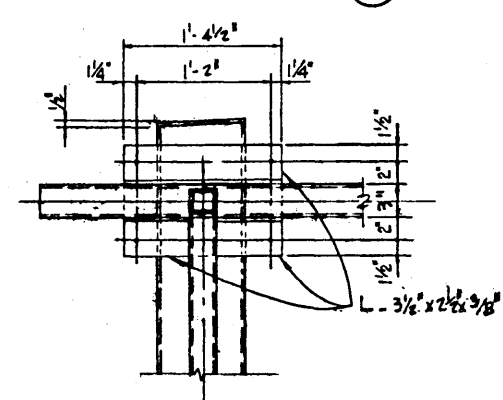
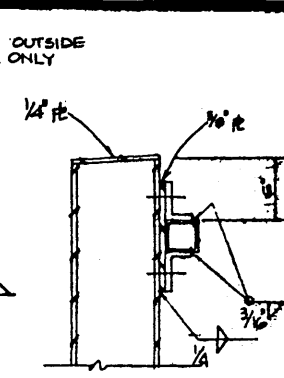
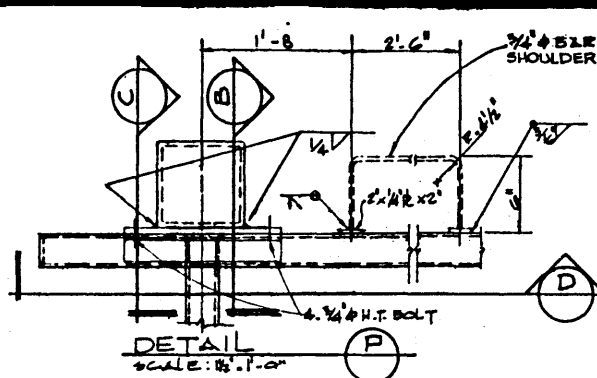
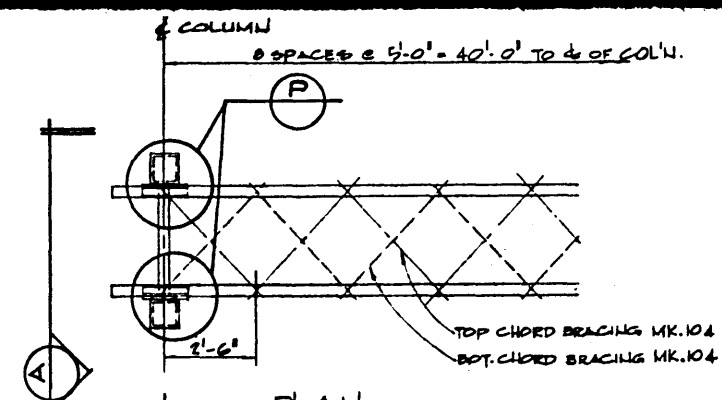
NOTE: BARS ARE TO BE ASSEMBLED INTO A CASE BY AN APPROVED TACK WELDER.

ALL BAR DIMENSIONS ARE OUT TO OUT.

ITEM	UNIT	QUANTITY	CONST.
CONCRETE CLASS 'K'	CU YD	2.11	
REINFORCING STEEL	LB	927.8	

NOTE: FOR LEVELING PURPOSES, LOOSE SHIMS TO BE PLACED UNDER LUDER BAR. GRIND WELDED TO FACE OF BARS IF NECESSARY. AFTER THE SCOUT BARS ARE TIGHTENED ALL BOLTS WITH TORQUE WRENCH AND PROVED WITH LEASST 300 FT. LB OF TORQUE.

NOTE: TRIM TOP OF PILE WHERE REQUIRED TO KEEP OUTSIDE EDGE A MAXIMUM 6" ABOVE GROUND LINE (APPROX.).



FOOTING FOUNDATIONS SHALL NOT BE INSTALLED IN SOFT CLAYS, LOOSE ORGANIC SAND AND SILT OR SIMILAR SOIL.

WORK THIS DWG. IN CONJUNCTION WITH DWG. NO. S-1151.

CARSWELL ENGINEERING LTD CONSULTING ENGINEERS CALGARY, ALBERTA	APPROVED R.G.Q. R.G.Q.	Albera HIGHWAYS AND TRANSPORT BRIDGE BRANCH STANDARD SKIN BRIDGE 40'-0" SPAN COLUMN DETAILS	
	REVISIONS NO. DATE DESCRIPTION BY 1 22 MAR 76 TOP OF FOOTING PILE. R.G.Q. 2 11 MAR 76 RELABELLED FROM CARSWELL DWG. R.G.Q.	CHIEF BRIDGE ENGINEER DATE	SHEET S-1150
	DEIGNED BY: E.C. DRAWN BY: R.E.R. DATE: OCT. 75 CHECKED BY: E.F.C. DATE: JAN. 76	PROJECT NO. LOCATION: 55 NORTH	

