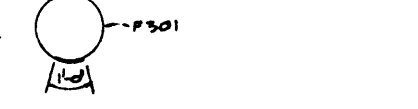


ITEM	QTY	UNIT	WEIGHT
F601	96	52 LBS	976.3
F501	43	28 LBS	176.3
TOTAL			1152.6

NOTE: BARS ARE TO BE ASSEMBLED INTO A CAGE BY AN APPROVED TACK WELDER.

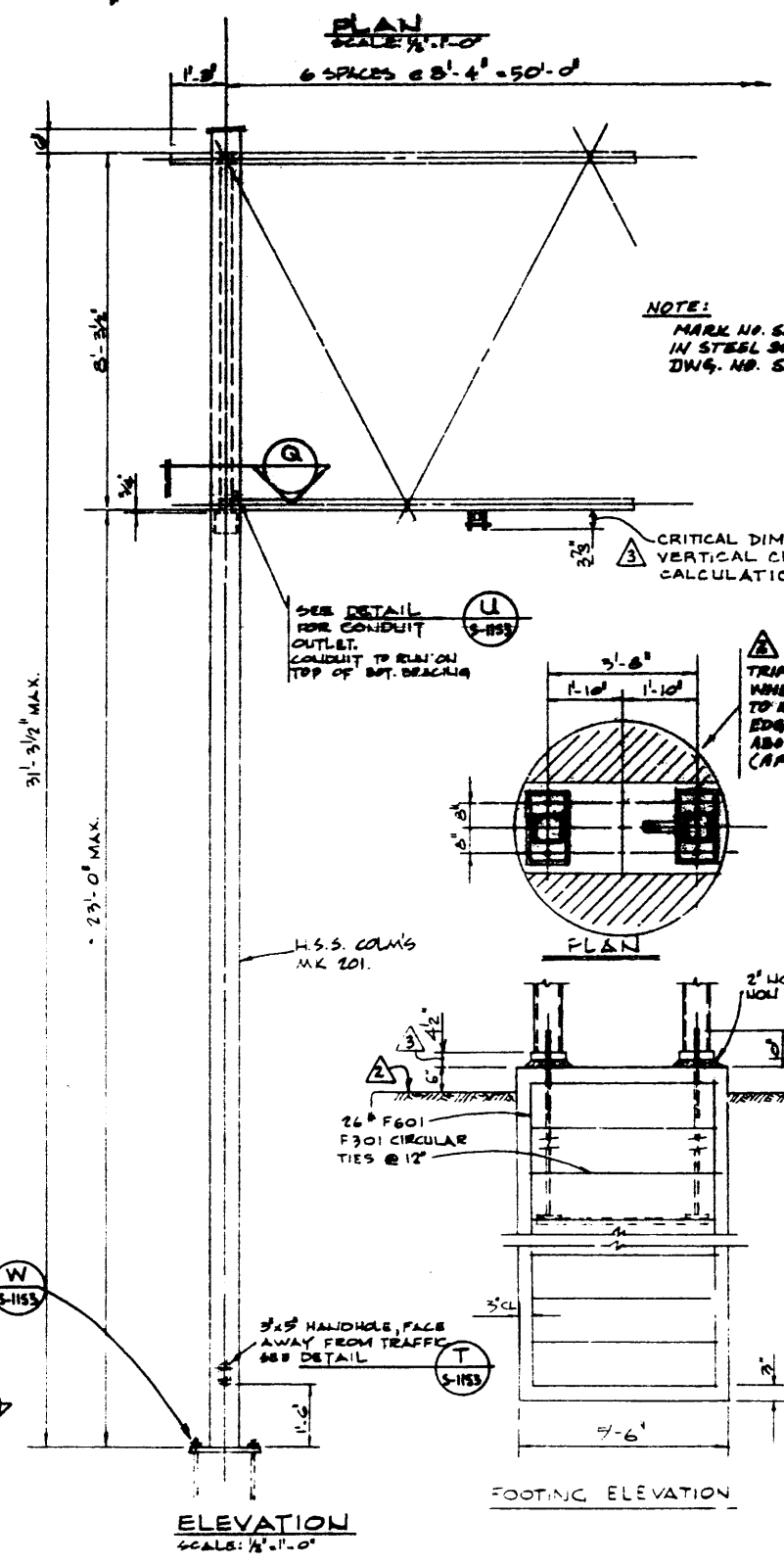
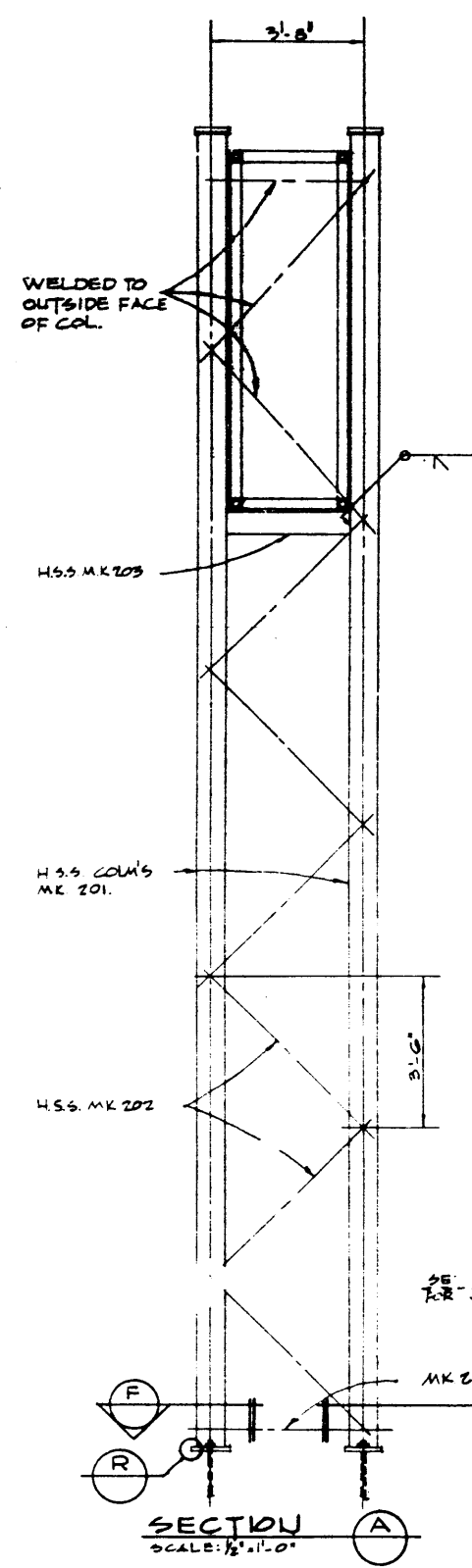
ALL BAR DIMENSIONS ARE OUT TO OUT



QUANTITY ESTIMATE - 2 FOOTINGS

ITEM	UNIT	QUANTITY
CONCRETE CLASS X	CY	22.7
REINFORCING STEEL	LBS	1152.6

NOTE:  
1. FOR LEVELLING PURPOSES, LOOSE SHIMS TO BE PLACED ONLY UNDER BASE SHIM WELDED TO 1/4" OF BASE PLATE.  
2. AFTER THE REBAR HAS BEEN TIGHTENED ALL BOLTS WITH TORQUE WRENCH AND SHOULD NOT BE LESS THAN 300 FT. LB. OF TORQUE.



NOTE: MARK NO. SIZES ARE SHOWN IN STEEL SCHEDULE ON DWG. NO. S-1153.

CRITICAL DIMENSION FOR VERTICAL CLEARANCE CALCULATION.

SEE DETAIL FOR CONDUIT OUTLET. CONDUIT TO REST ON TOP OF BOT. BRACING

TRIM TOP OF PILE WHERE REQUIRED TO KEEP OUTSIDE EDGE A MINIMUM 6" ABOVE GROUND LINE (APPROX.)

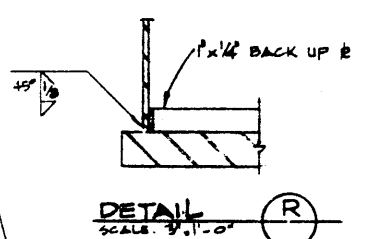
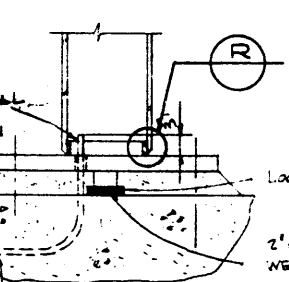
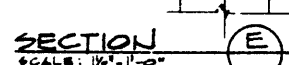
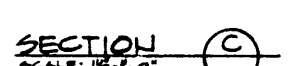
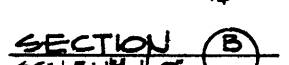
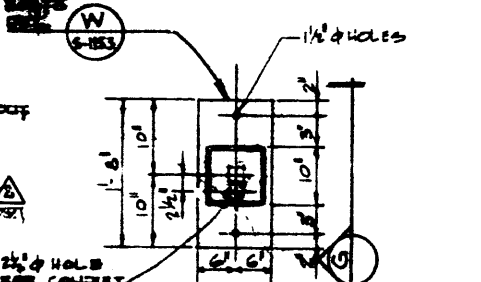
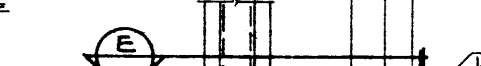
WELD BOT. PLATE TO COL.

5/8" x 12" x 1'-8" C/W 2-#50 BRASS BAR BOLTS SEE DETAIL

26" F601 F501 CIRCULAR TIES @ 12"

3"x5" HANDHOLE, FACE AWAY FROM TRAFFIC SEE DETAIL

NOTE: FOUNDATIONS SHALL NOT BE INSTALLED IN SOFT CLAY, LOOSE ORGANIC SAND AND SILT OR SIMILAR SOIL.



WORK THIS DWG. IN CONJUNCTION WITH DWG. NO. S-1153.

CARSWELL ENGINEERING LTD. CONSULTING ENGINEERS CALGARY, ALBERTA	APPROVED		HIGHWAYS AND TRANSPORT BRIDGE BRANCH STANDARD SIGN BRIDGE 50'-0" SPAN COLUMN DETAILS (1) (2)
	REVISIONS NO. DATE DESCRIPTION BY		
	DESIGNED BY E.C.	DRAWN BY Z.E.B.	
REVISIONS NO. DATE DESCRIPTION BY		DATE	SHEET NO. 11 OF 11 FILE NO. S-1152