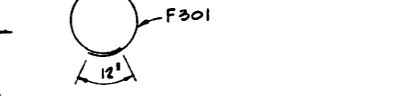


BAR LIST - 2 FOOTINGS

MARK	SIZE	NO.	TYPE	LENGTH	WEIGHT
F301	#6	60	STR.	14'-6"	1906.7
F301	#3	32	CIRC.	18'-4"	220.6
TOTAL					1527.3

NOTE: BARS ARE TO BE ASSEMBLED INTO A CAGE BY AN APPROVED TACK WELD.

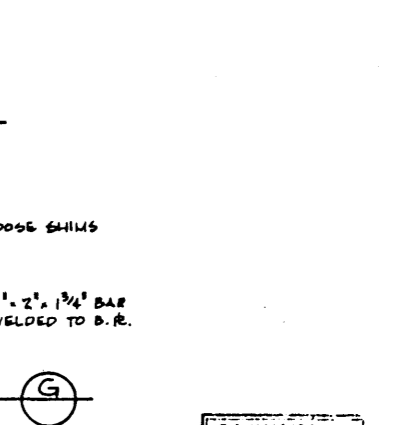
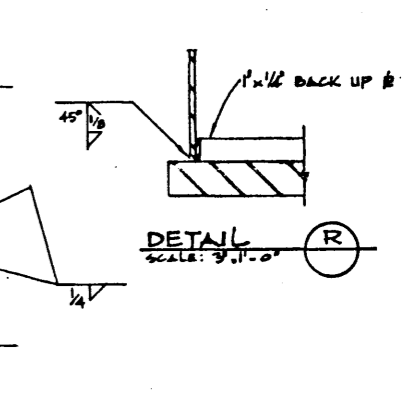
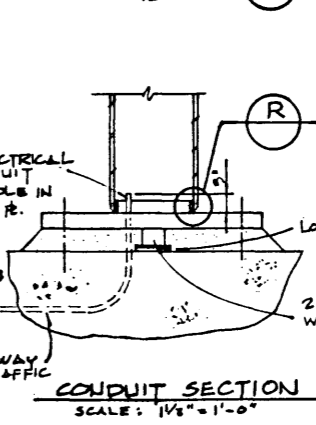
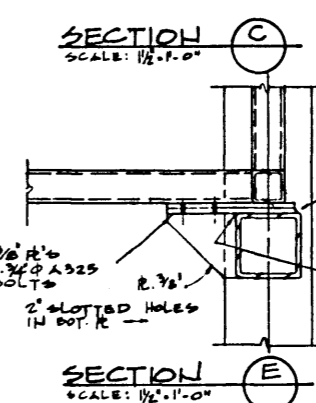
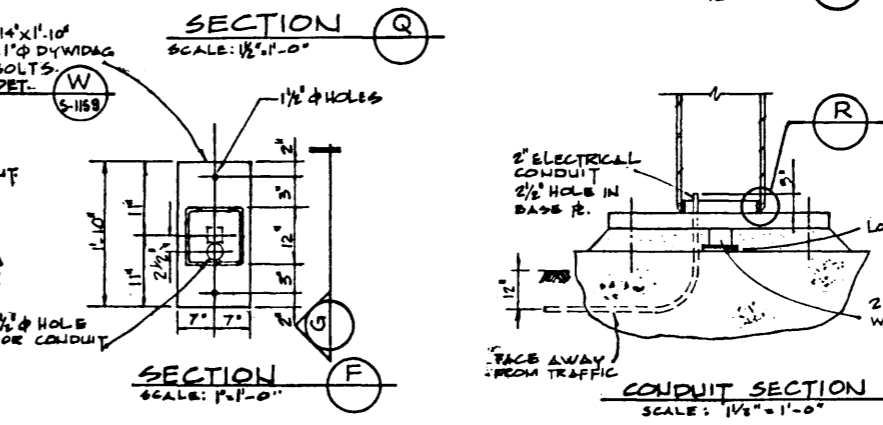
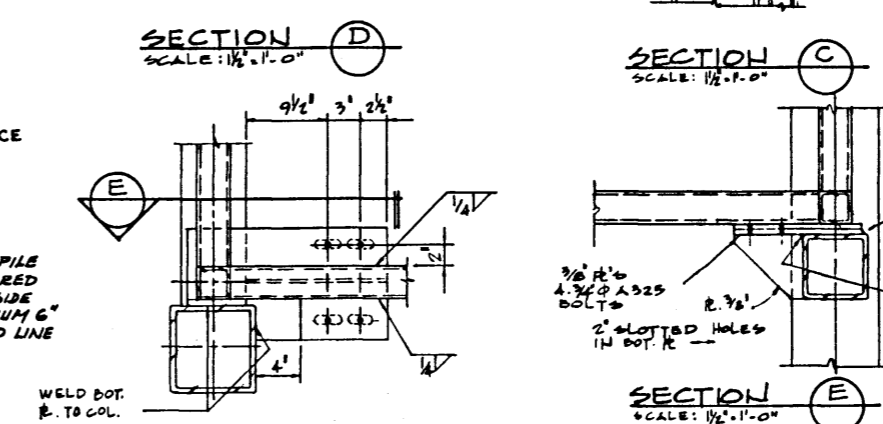
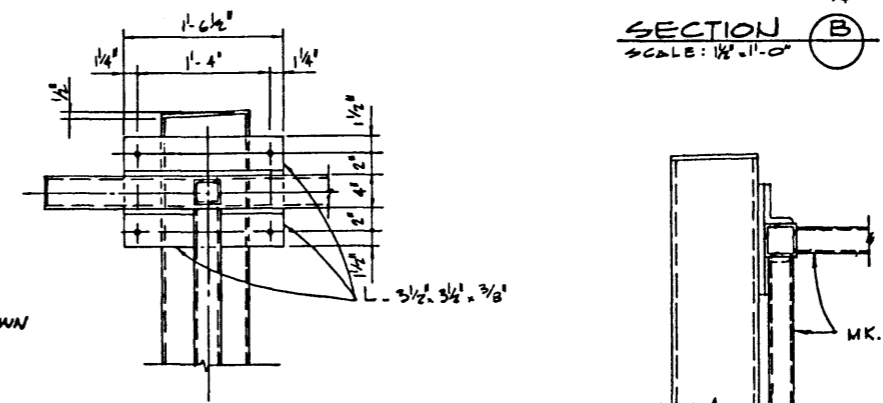
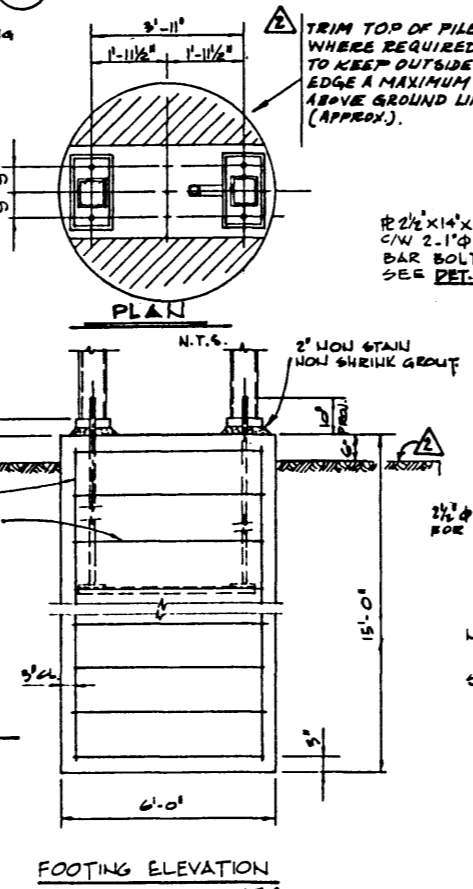
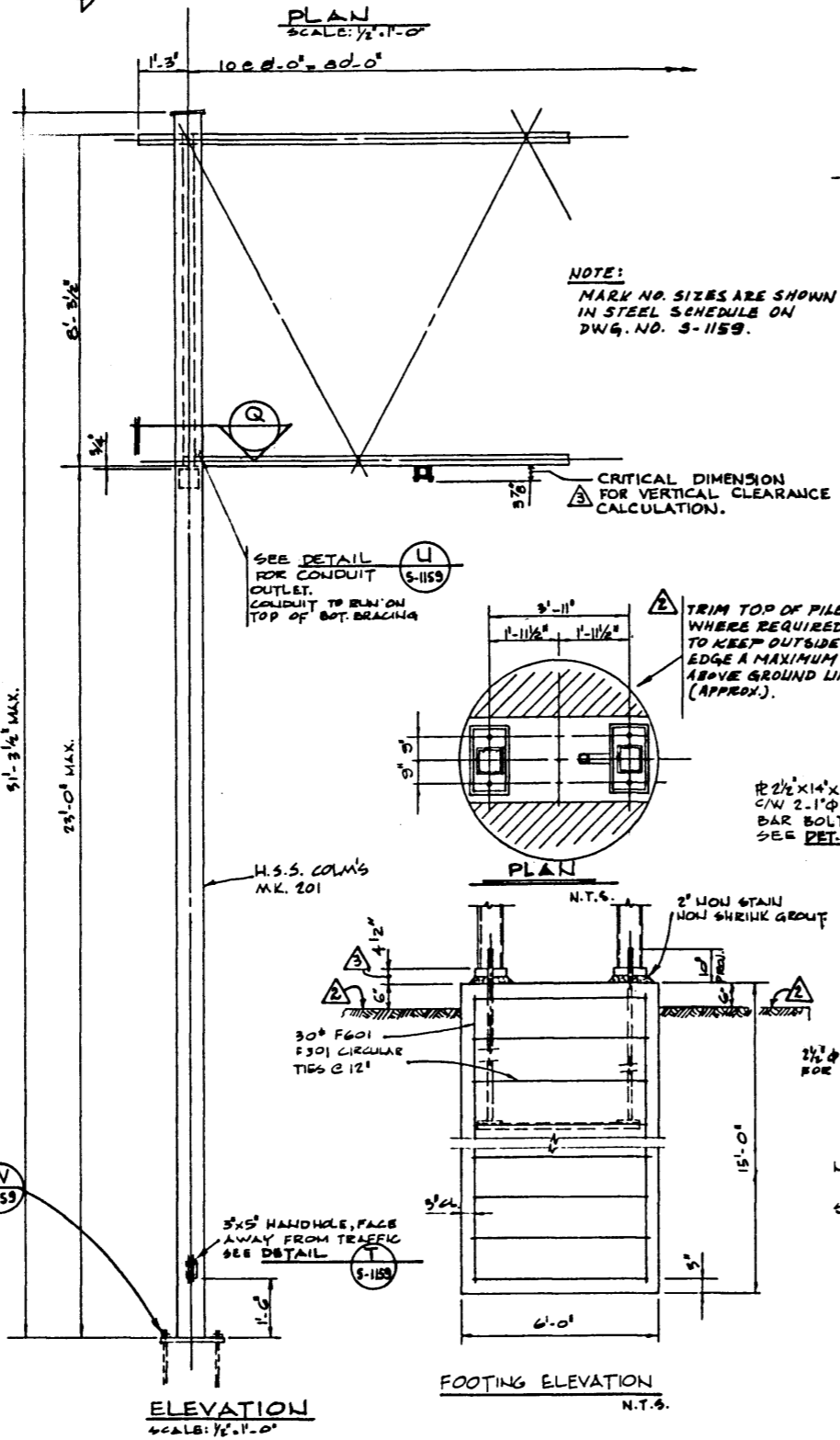
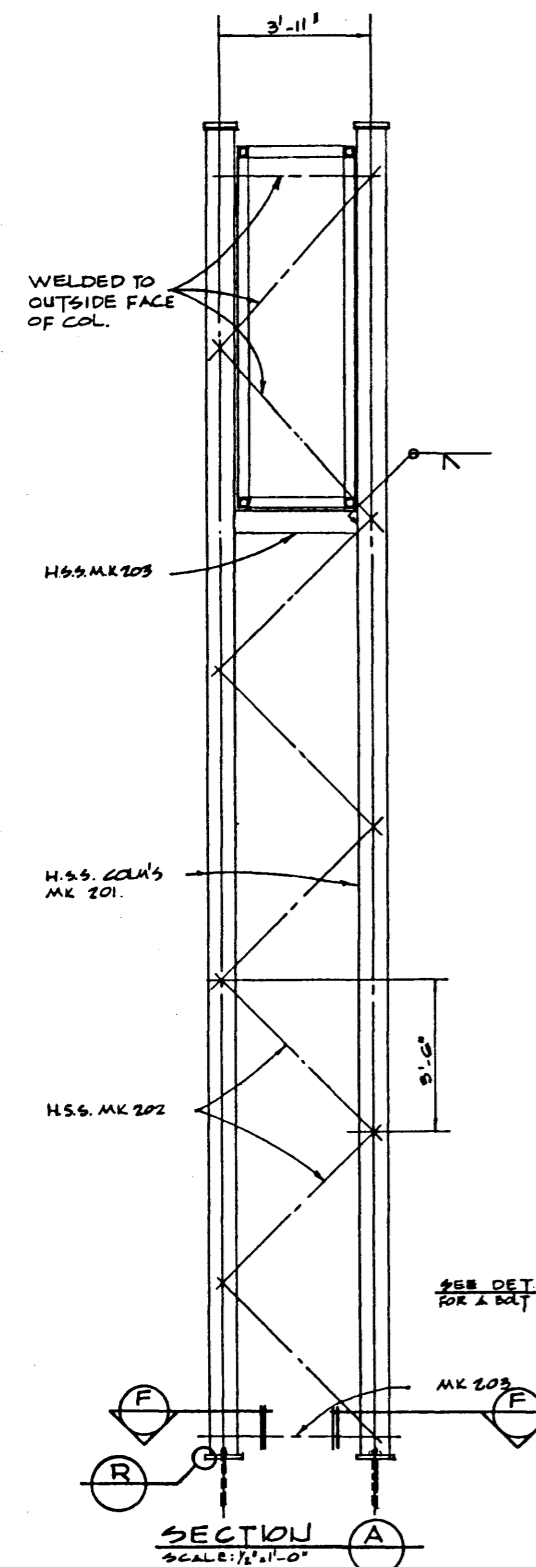
ALL BAR DIMENSIONS ARE OUT TO OUT



QUANTITY ESTIMATE - 2 FOOTINGS

ITEM	UNIT	ESTIMATE	CONV.
CONCRETE CLASS 'A'	CU. YDS	31.4	
REINFORCING STEEL	LEBS	1527.3	

NOTE:
1. FOR LEVELLING PURPOSES LOOSE SHIMS TO BE PLACED ONLY UNDER BASE SHIM WELDED TO 1/4 OF BASE #
2. AFTER THE GROUT HAS CURED TIGHTEN ALL BOLTS WITH TORQUE WRENCH AND PROVIDE NOT LESS THAN 300 FT. LB. OF TORQUE.



NOTE: MARK NO. SIZES ARE SHOWN IN STEEL SCHEDULE ON DWG. NO. S-1159.

NOTE: TRIM TOP OF PILE WHERE REQUIRED TO KEEP OUTSIDE EDGE A MAXIMUM 6" ABOVE GROUND LINE (APPROX.).

NOTE: FOUNDATIONS SHALL NOT BE INSTALLED IN SOFT CLAY, LOOSE ORGANIC SAND AND SILT OR SIMILAR SOIL.

WORK THIS DWG. IN CONJUNCTION WITH DWG. NO. S-1159.

THE ASSOCIATION OF PROFESSIONAL ENGINEERS OF ALBERTA
PERMIT NUMBER P 442
CARSWELL ENGINEERING LTD.



CARSWELL ENGINEERING LTD. CONSULTING ENGINEERS CALGARY ALBERTA	APPROVED		HIGHWAYS AND TRANSPORT BRIDGE BRANCH	
	04-01-03 CRITICAL CLEAR DIMENSION ADDED TJS 22 MAR. 76 TOP OF FOOTING PILE RGG 11 MAR. 76 RELABELLED FROM CARSWELL DWG. R.G.G.		STANDARD SIGN BRIDGE 80'-0" SPAN COLUMN DETAILS	
DESIGNED E.C.		DRAWN BY R.B.	DATE OCT. 75	CHECKED BY E.F.C.
DATE		DATE	DATE	DATE
STREAM		LOCATION	HWY. NO.	SCALE AS NOTED
FILE NO.		SHEET	OF	DWG. NO. S-1158

CARSWELL DWG. NO. 80-1