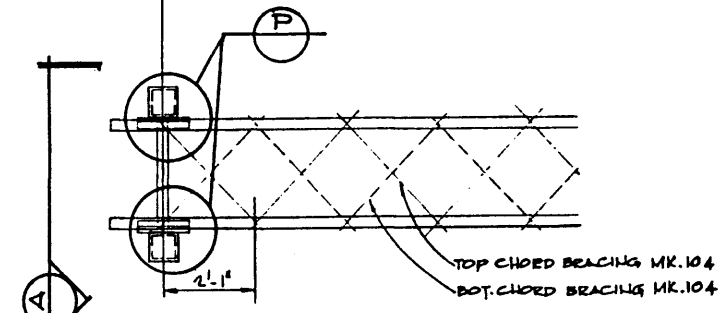
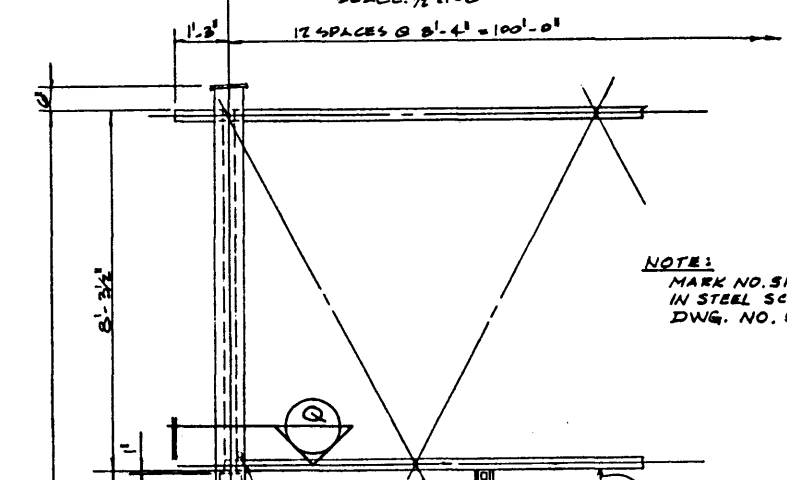


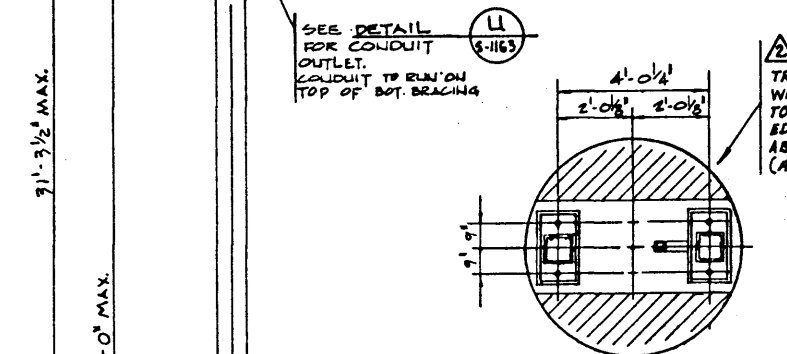
COLUMN
24 SPACES @ 4'-2" = 100'-0" TO & OF COLN.



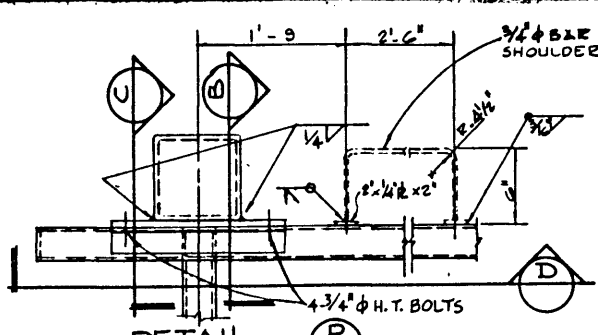
PLAN
SCALE: 1/2" = 1'-0"



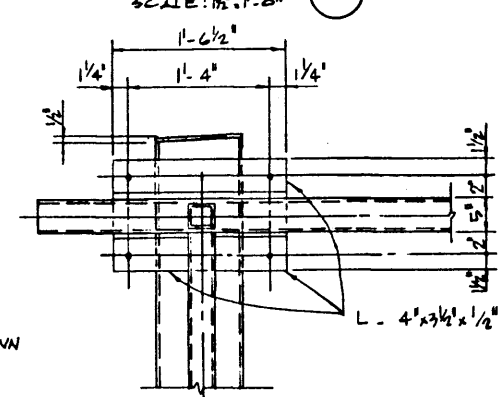
ELEVATION
SCALE: 1/2" = 1'-0"



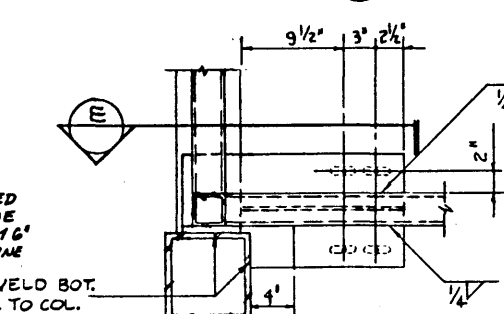
FOOTING ELEVATION
SCALE: 1/2" = 1'-0"



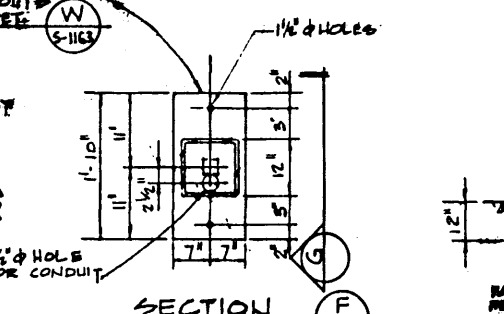
DETAIL
SCALE: 1/2" = 1'-0"



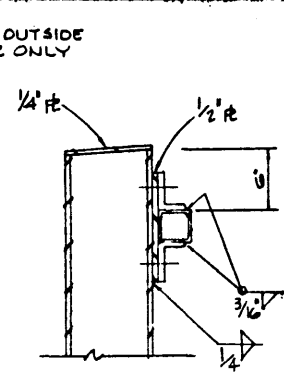
SECTION D
SCALE: 1/2" = 1'-0"



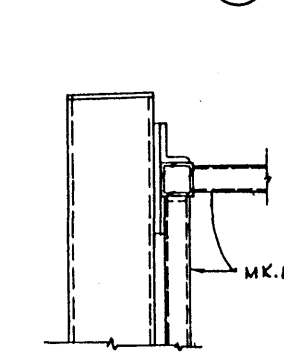
SECTION Q
SCALE: 1/2" = 1'-0"



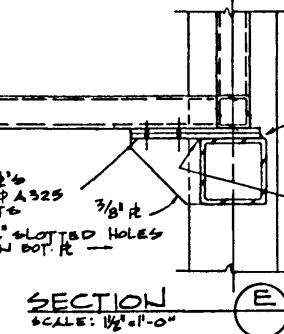
SECTION F
SCALE: 1/2" = 1'-0"



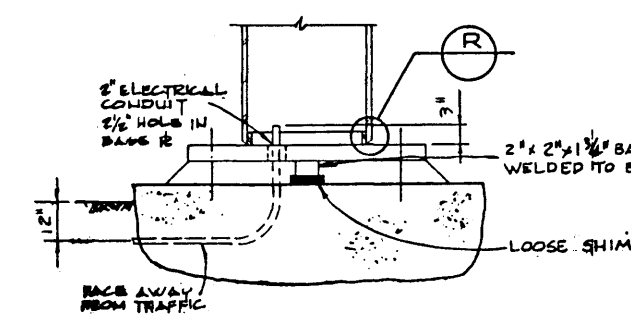
SECTION B
SCALE: 1/2" = 1'-0"



SECTION C
SCALE: 1/2" = 1'-0"



SECTION E
SCALE: 1/2" = 1'-0"

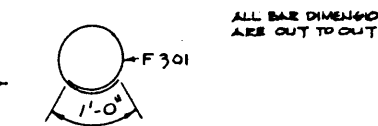


CONDUIT SECTION G
SCALE: 1/2" = 1'-0"

BAR LIST - 2 FOOTINGS

MARK	SIZE	NO.	TYPE	LENGTH	WEIGHT
F701	#7	60	STE.	15'-6"	1901
F301	#3	34	CIRC.	18'-4"	234.4
TOTAL					2135.4

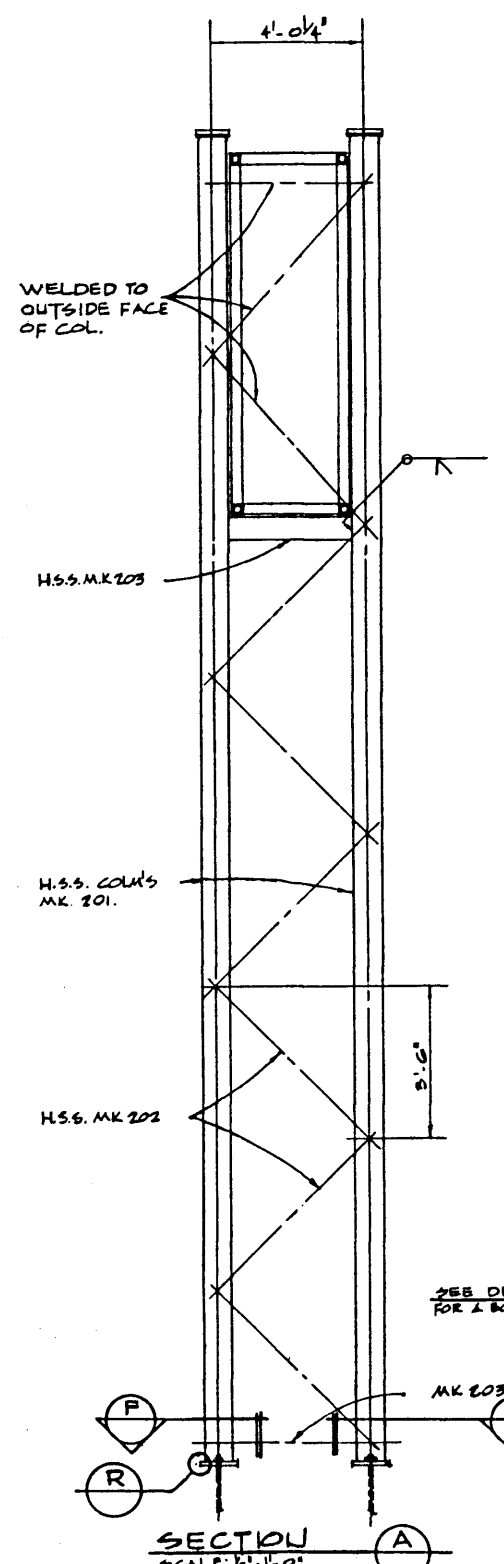
NOTE: BARS ARE TO BE ASSEMBLED INTO CAGE BY AN APPROVED TACK WELDER.



QUANTITY ESTIMATE - 2 FOOTINGS

ITEM	UNIT	ESTIMATE IN COLN
CONCRETE CLASS 'X'	CU. YDS	33.5
REINFORCING STEEL	LBW	2135.4

- NOTE:
- FOR LEVELLING PURPOSES LOOSE SHIMS TO BE PLACED ONLY UNDER BASE & WELDED TO 1/4" OF BASE R
 - AFTER THE GROUT HAS CURED TIGHTEN ALL BOLTS WITH TORQUE WRENCH AND PROVIDE NOT LESS THAN 300 FT.-LB. OF TORQUE.



SECTION A
SCALE: 1/2" = 1'-0"

NOTE: MARK NO. SIZES ARE SHOWN IN STEEL SCHEDULE ON DWG. NO. S-1163.

CRITICAL DIMENSION FOR VERTICAL CLEARANCE CALCULATION.

SEE DETAIL FOR CONDUIT OUTLET. CONDUIT TO RUN ON TOP OF BOT. BRACING

TRIM TOP OF PILE WHERE REQUIRED TO KEEP OUTSIDE EDGE A MAXIMUM 6" ABOVE GRAUND LINE (APPROX.).

WELD BOT. R. TO COL.

B.R. 2 1/2" x 14" x 1/4" OR 2-1" DIA. WIDENING BAR BOLTS SEE DET. S-1163

2" NON-STAIN NON-SHRINK GROUT

30 #F701

F301 CIRCULAR TIES @ 12"

5" x 5" HANDHOLE, FACE AWAY FROM TRAFFIC SEE DET. S-1163

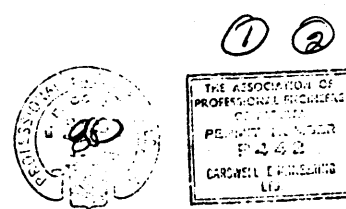
16'-0"

6'-0"

NOTE: FOUNDATIONS SHALL NOT BE INSTALLED IN SOFT CLAY, LOOSE ORGANIC SAND AND SILT OR SIMILAR SOIL.

WORK THIS DWG. IN CONJUNCTION WITH DWG. NO. S-1163.

CARSWELL ENGINEERING LTD CONSULTING ENGINEERS CALGARY ALBERTA	DESIGNED	BY	DATE	CHECKED BY	DATE	STREAM	LOCATION	HYD. NO.	SCALE	FILE NO.	SHEET	DWG. NO.
	E.C.	R.E.B.	OCT. 75	E.F.C.	JAN. 76				AS NOTED		5-1162	
APPROVED		KST		R.G.B.		R.R.R.		DATE		CHIEF BRIDGE ENGINEER		
Albera HIGHWAYS AND TRANSPORT BRIDGE BRANCH										STANDARD SIGN BRIDGE		
										100'-0" SPAN COLUMN DETAILS		



CARSWELL DWG. NO. 100-1