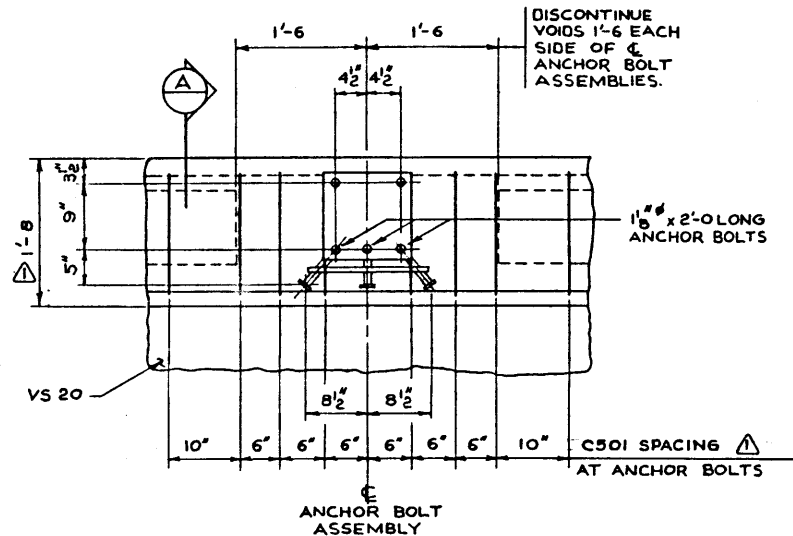


SECTION A
1/2" = 1'-0"

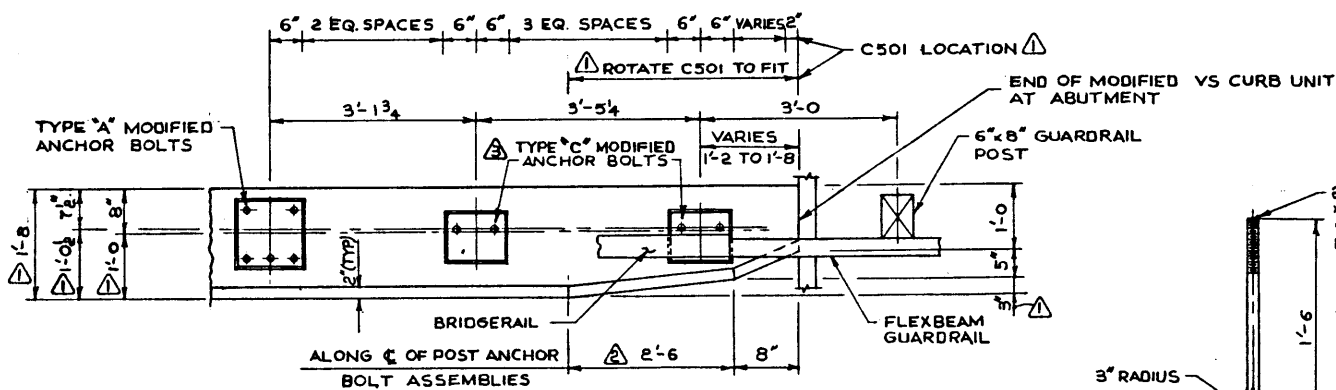
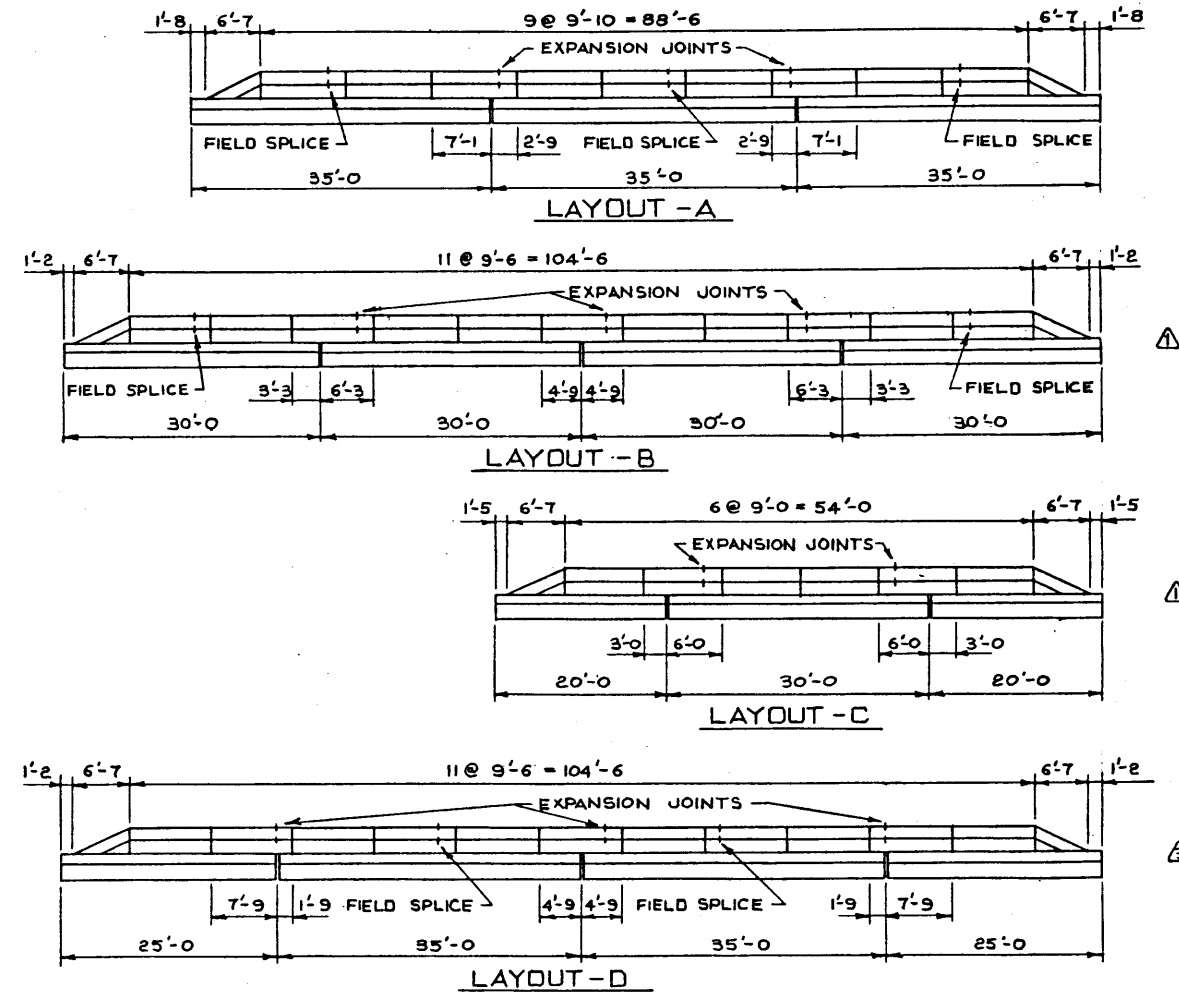


NOTE:
MODIFIED TYPE "A" ANCHOR BOLT ASSEMBLY AND GROUT, FOR
DETAILS AND DIMENSIONS NOT SHOWN HERE AND
SECTION, SEE DWG. S-986-75.

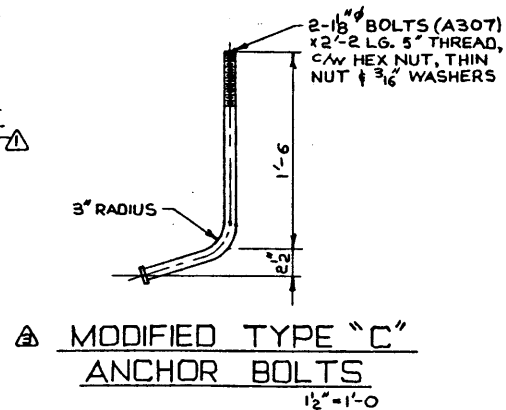
CURB DETAIL AT
ANCHOR BOLT ASSEMBLIES
1" = 1'-0"

LINE DIAGRAM OF RAIL LAYOUT

N.T.S.



PLAN-CURB END AT ABUTMENTS
3/4" = 1'-0"



MODIFIED TYPE "C"
ANCHOR BOLTS
1/2" = 1'-0"

GENERAL NOTES

- BRIDGERAIL TO BE FABRICATED ACCORDING TO DWG. S-986-75 EXCEPT AS MODIFIED HERE.
- CURB GIRDERS TO BE FABRICATED AS PER THE STANDARD VS CURB GIRDER DRAWING EXCEPT AS MODIFIED HERE.

• WORK THIS DRAWING IN CONJUNCTION WITH DWG. S-986-75 AND THE RELEVANT VS CURB GIRDER DRAWING.

DESIGNED	D.K.D.	DRAWN BY	W.S.	DATE	NOV. 76	CHECKED BY		DATE		STREAM		LOCATION		HWY. NO.		SCALE	SHOWN	FILE NO.		SHEET		DWG. NO.	S-1170				
<table border="1"> <tr> <td>7 DEC 76</td> <td>RAIL LAYOUT ADDED AND TYPE "C" BOLT MODIFIED</td> <td>D.K.D.</td> <td>APPROVED</td> </tr> <tr> <td>25 NOV 76</td> <td>CURB TAPER MODIFIED</td> <td>D.K.D.</td> <td></td> </tr> <tr> <td>22 NOV 76</td> <td>RAIL LAYOUT ADDED & CURB WIDTH REDUCED FROM 2'-2" TO 1'-6"</td> <td>D.K.D.</td> <td></td> </tr> </table>										7 DEC 76	RAIL LAYOUT ADDED AND TYPE "C" BOLT MODIFIED	D.K.D.	APPROVED	25 NOV 76	CURB TAPER MODIFIED	D.K.D.		22 NOV 76	RAIL LAYOUT ADDED & CURB WIDTH REDUCED FROM 2'-2" TO 1'-6"	D.K.D.				<p>2'-9" TUBE TYPE BRIDGERAIL FOR STD. VS BRIDGES</p>			
7 DEC 76	RAIL LAYOUT ADDED AND TYPE "C" BOLT MODIFIED	D.K.D.	APPROVED																								
25 NOV 76	CURB TAPER MODIFIED	D.K.D.																									
22 NOV 76	RAIL LAYOUT ADDED & CURB WIDTH REDUCED FROM 2'-2" TO 1'-6"	D.K.D.																									