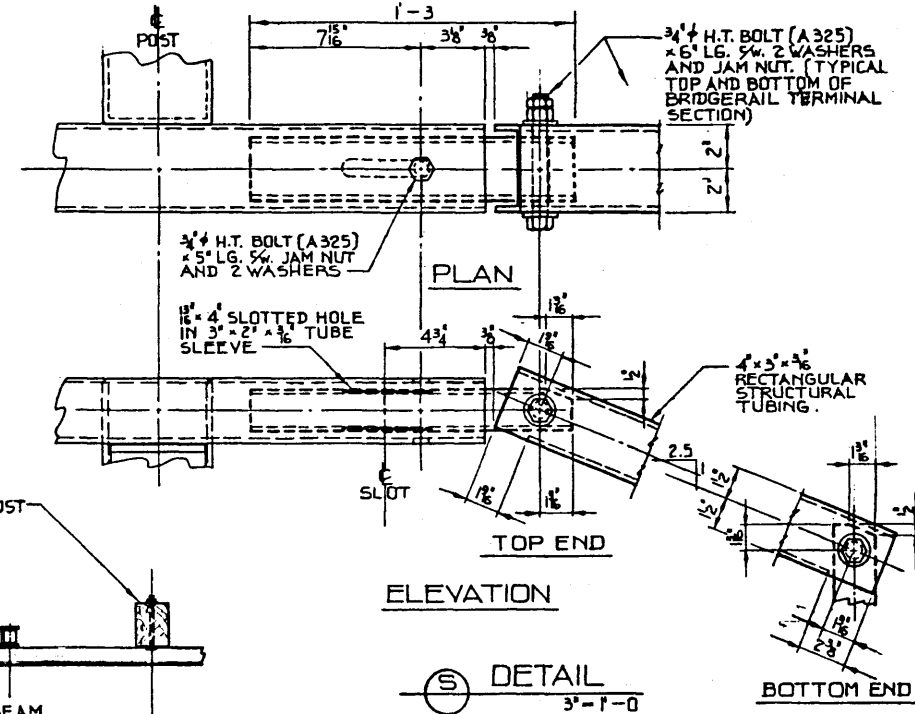
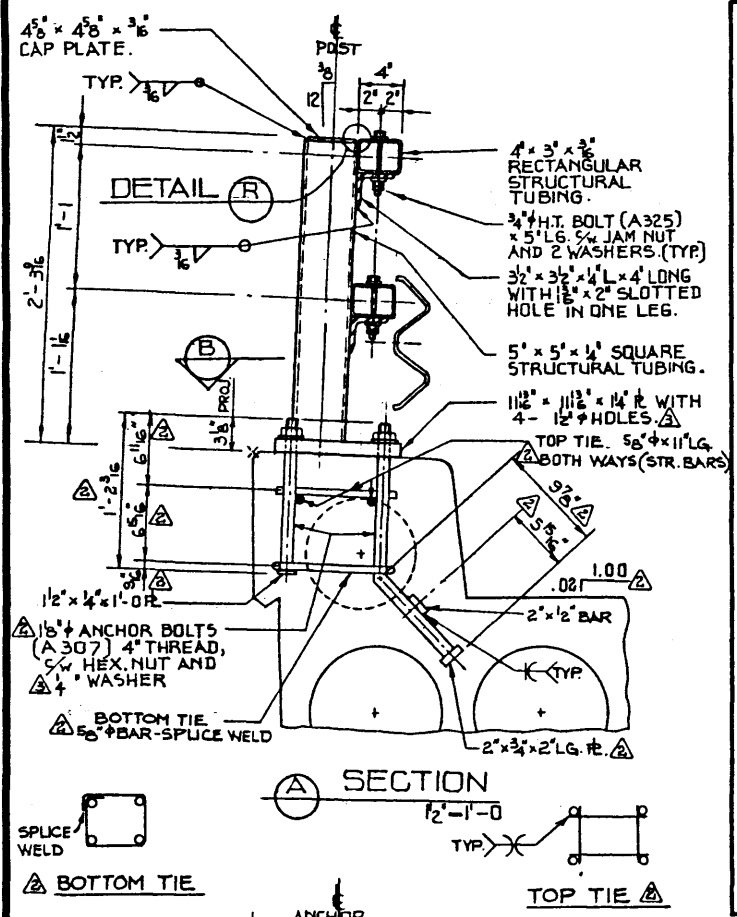


BRIDGERAIL POST LAYOUT ON INDIVIDUAL GIRDERS



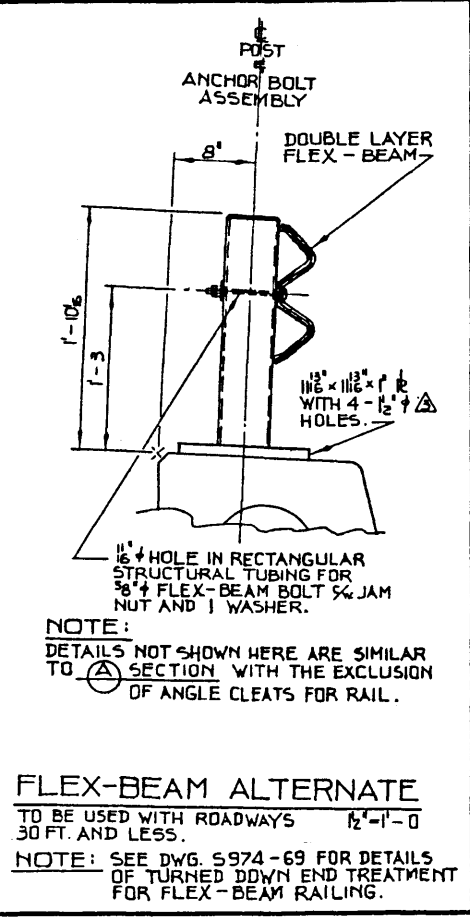
ELEVATION

DETAIL 3'-1'-0"



SECTION 1/2'-1'-0"

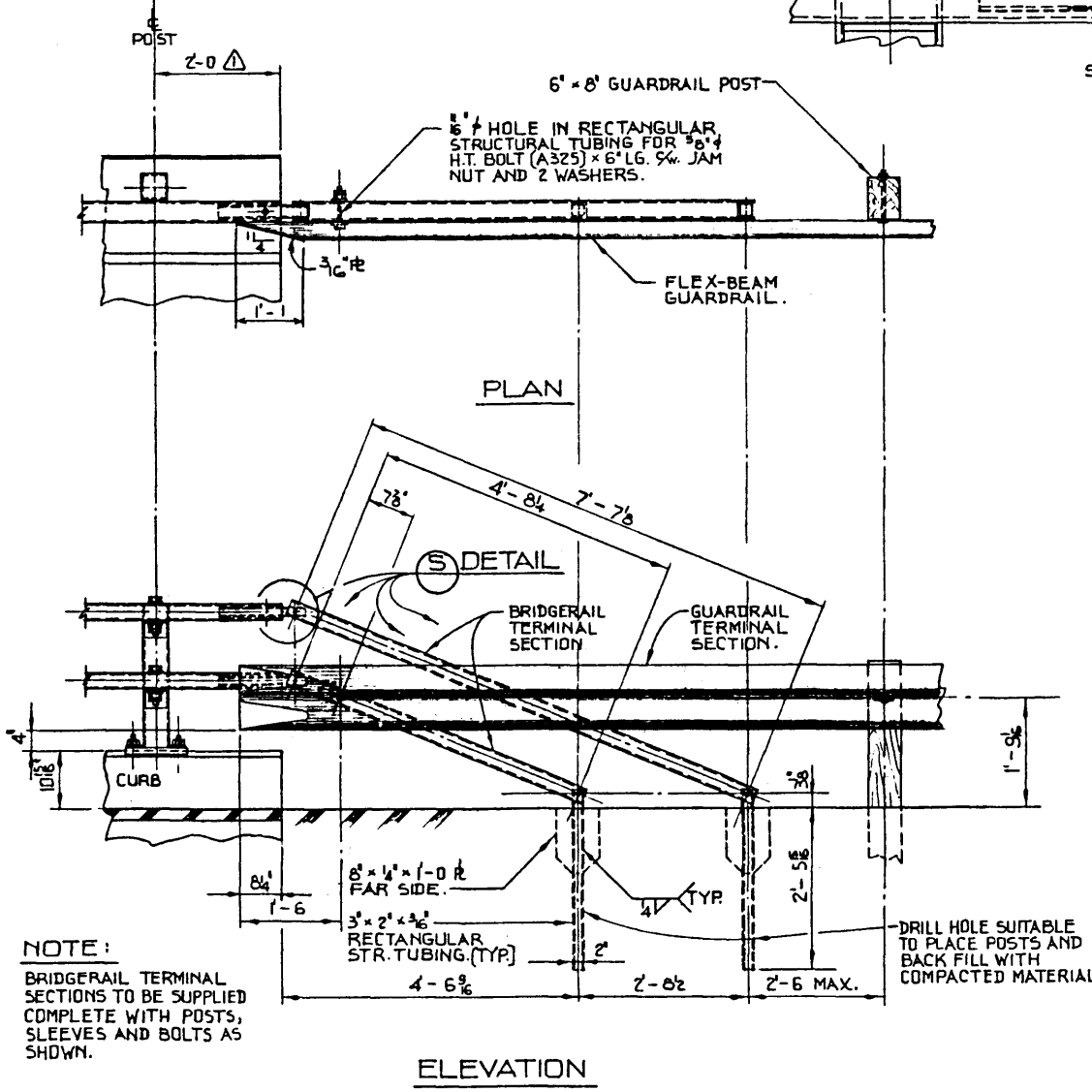
SECTION 1/2'-1'-0"



FLEX-BEAM ALTERNATE

TO BE USED WITH ROADWAYS 30 FT. AND LESS.

NOTE: SEE DWG. 5974-69 FOR DETAILS OF TURNED DOWN END TREATMENT FOR FLEX-BEAM RAILING.

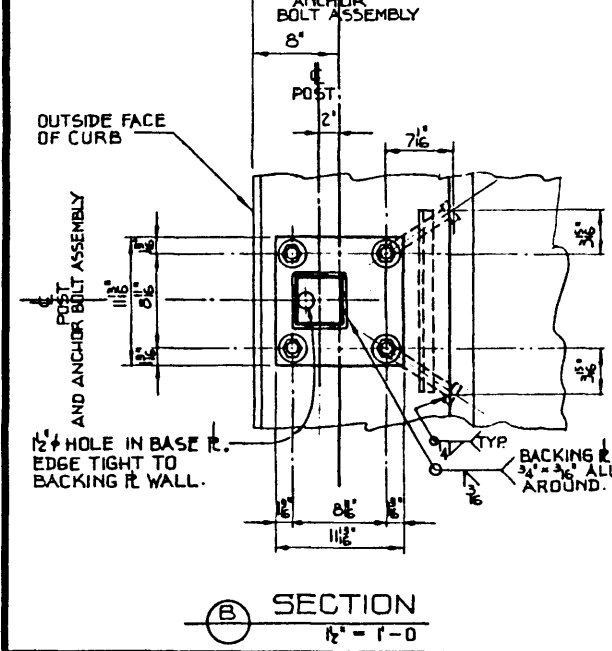


ELEVATION

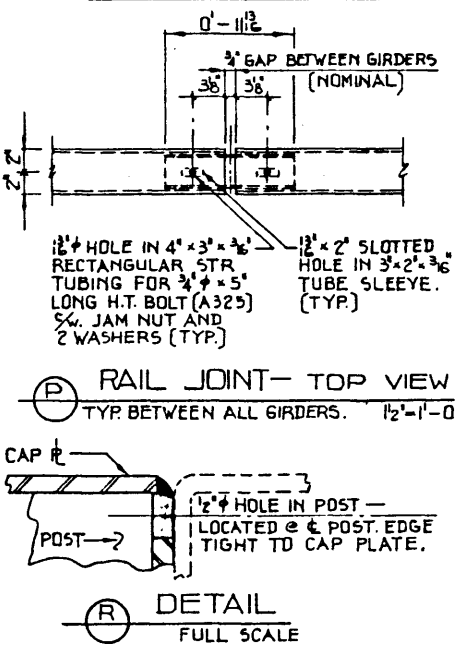
BRIDGERAIL END DETAIL 3'-1'-0"

GENERAL NOTES:

- FABRICATION**
- DESIGN STANDARD 1973 A.A.S.H.T.O. AND 1974 C.S.A.-56 SPECIFICATIONS (TRAFFIC RAIL).
 - DESIGN IS FOR PARTICIPATING CURB - ROADWAY OVER 30 FT. FLEX-BEAM ALTERNATE 1 PARTICIPATING CURB - ROADWAY 30 FT. OR LESS.
 - ALL REQUIREMENTS OF THE BRIDGE BRANCH SPECIFICATION FOR THE SUPPLY OF STRUCTURAL STEEL FOR BRIDGES (SPEC. NO. B107-77) SHALL BE MET.
 - ALL STEEL SHALL CONFORM TO C.S.A. G40.21 GRADE 44W, EXCEPT STRUCTURAL TUBING TO CONFORM TO A.S.T.M. A500 B OR C.S.A. G40.21M-350 W. ANCHOR BOLTS TO MEET A.S.T.M. A307.
 - ALL MATERIALS SHALL BE HOT DIP GALVANIZED AFTER FABRICATION IN ACCORDANCE WITH THE REQUIREMENTS OF THE FOLLOWING A.S.T.M. SPECIFICATIONS:
RAILING AND POSTS - A123
BOLTS AND ANCHOR BOLT ASSEMBLIES - A153
 - ALL WELDING SHALL CONFORM TO THE CURRENT A.W.S. SPECIFICATION D1.1
 - BRIDGE TO BE CONSIDERED LEVEL FOR BRIDGERAIL FABRICATION.
- ERECTION**
- ALL DIMENSIONS ARE MEASURED PARALLEL TO TOP OF CURB AND ALONG CENTERLINE OF POST ANCHOR BOLT ASSEMBLIES.
 - TIGHTENING OF RAIL BOLTS: ALL RAIL BOLTS ARE TO BE WRENCH TIGHT ONLY AND LOCKED WITH JAM NUT.



SECTION 1/2'-1'-0"



RAIL JOINT- TOP VIEW

TYP. BETWEEN ALL GIRDERS. 1/2'-1'-0"

DETAIL FULL SCALE

NO.	DATE	DESCRIPTION	BY
1	10 AUG 77	ANCHOR BOLT CONFIGURATION	D.K.D.
2	15 APRIL 77	POST LOCATIONS CHANGED	D.K.D.
REVISIONS			
DESIGNED	DRAWN BY	DATE	CHECKED BY
D.K.D.	M.M.F.	FEB. 77	

APPROVED	DATE
<i>J. Johnson</i>	MAR. 2/77

Alberta TRANSPORTATION BRIDGE BRANCH	
TUBE TYPE BRIDGERAIL FOR STANDARD VS BRIDGES	
DESIGNED	DRAWN BY
D.K.D.	M.M.F.
DATE	DATE
FEB. 77	
STREAM	LOCATION
HWY. NO.	SCALE
	SHOW'N
FILE NO.	SHEET
	of
DWG. NO.	
S-1173	