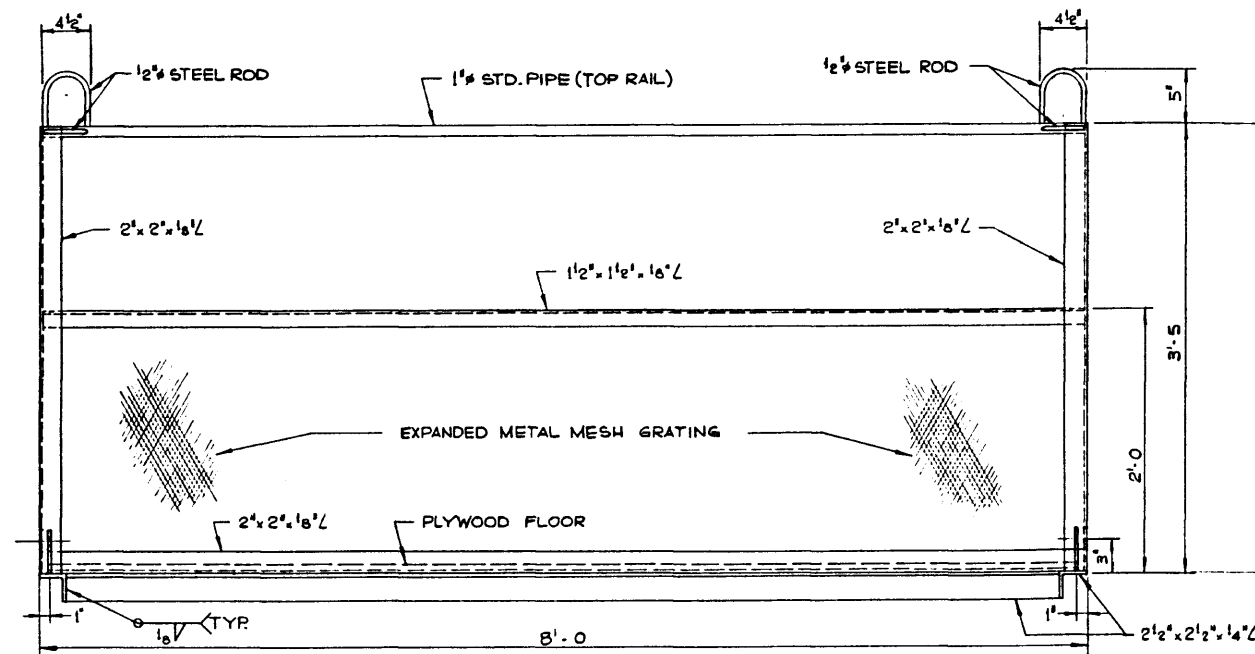
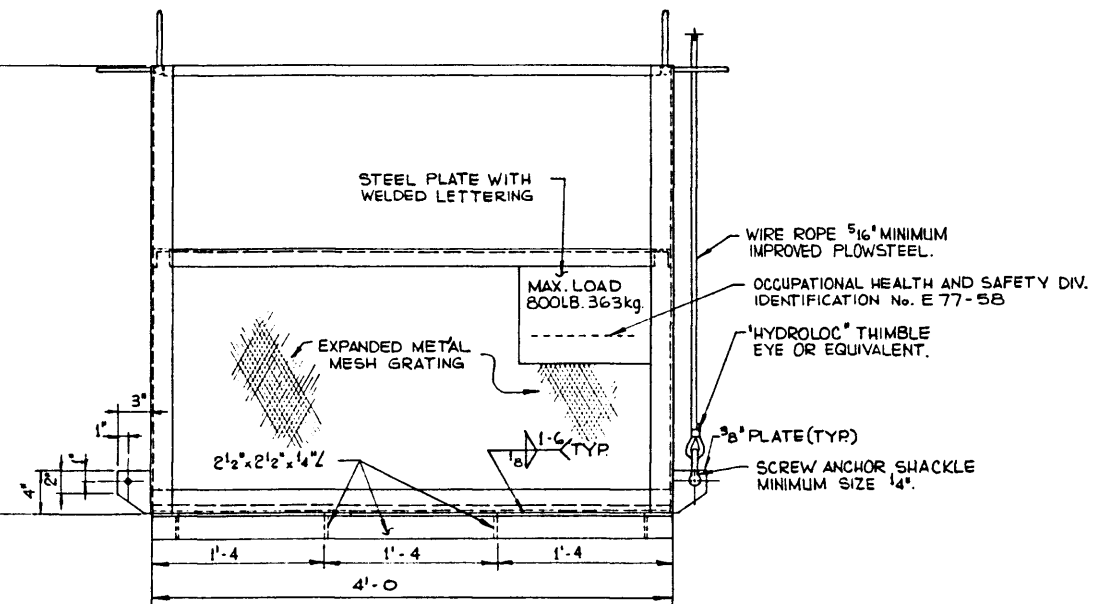


TOP VIEW  
1 1/2" x 1'-0"



ELEVATION  
1 1/2" x 1'-0"



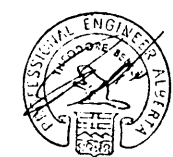
RIGHT SIDE  
1 1/2" x 1'-0"

**GENERAL NOTES**

- DESIGN LIVE LOAD**
- BASKET - 2 MEN PLUS TOOLS - 800 LB. MAXIMUM.
  - LIFTING LINES - 900 LB. MINIMUM WITH F.O.F.S OF 4.

- FABRICATION**
- ALL REQUIREMENTS OF BRIDGE BRANCH SPECIFICATION FOR THE SUPPLY OF STRUCTURAL STEEL FOR DESIGN (SPEC. No. 187-77) SHALL BE MET.
  - ALL STEEL SHALL CONFORM TO THE REQUIREMENTS OF CSA 640.21 GRADE 44W.

- OPERATIONS**
- LIFTING LINES AS SPECIFIED ARE MINIMUM SIZES ONLY. STD. CRANE EQUIP. SUCH AS SHACKLES AND LINES MAY BE USED.
  - CONDITIONS OF BASKET & STRUCTURAL WELDS SHALL BE CHECKED PRIOR TO USE.



|                       |             |             |            |                                      |                |
|-----------------------|-------------|-------------|------------|--------------------------------------|----------------|
| APPROVED              |             |             |            | Alberta TRANSPORTATION BRIDGE BRANCH |                |
| CHIEF BRIDGE ENGINEER |             |             |            | SUSPENDED CAGE                       |                |
| NO.                   | DATE        | DESCRIPTION | BY         | DATE                                 |                |
| REVISIONS             |             |             |            |                                      |                |
| DESIGNED              | DRAWN BY    | DATE        | CHECKED BY | DATE                                 |                |
| T. BELKE              | A. PHILLIPS | NOV. 17/77  |            |                                      |                |
| STREAM                | LOCATION    | HWY. NO.    | SCALE      | FILE NO.                             | SHEET          |
|                       |             |             |            |                                      | 1 of 1         |
|                       |             |             |            |                                      | DWG NO. S-1174 |