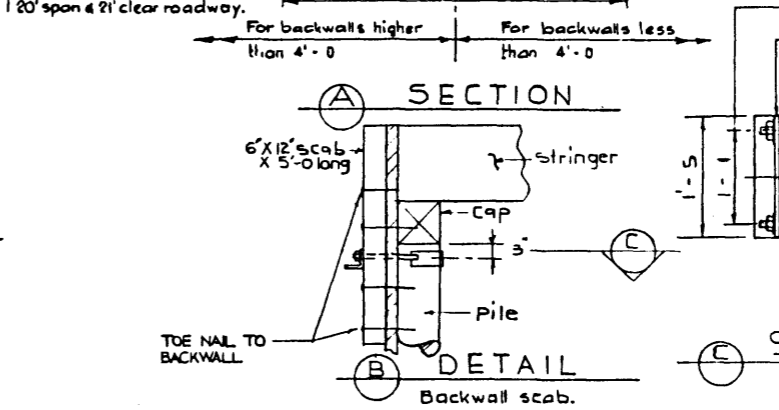
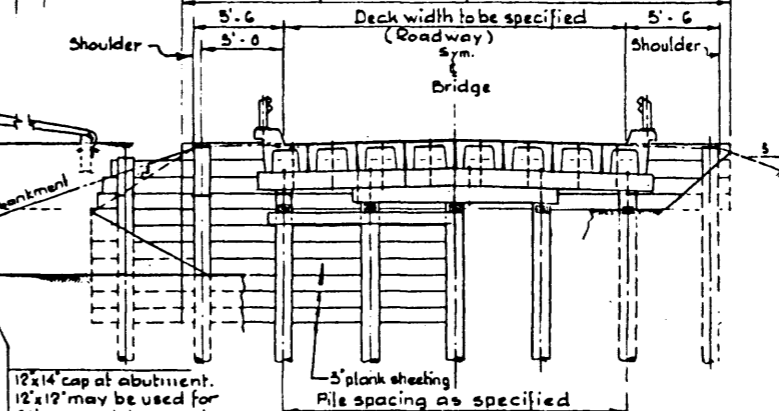
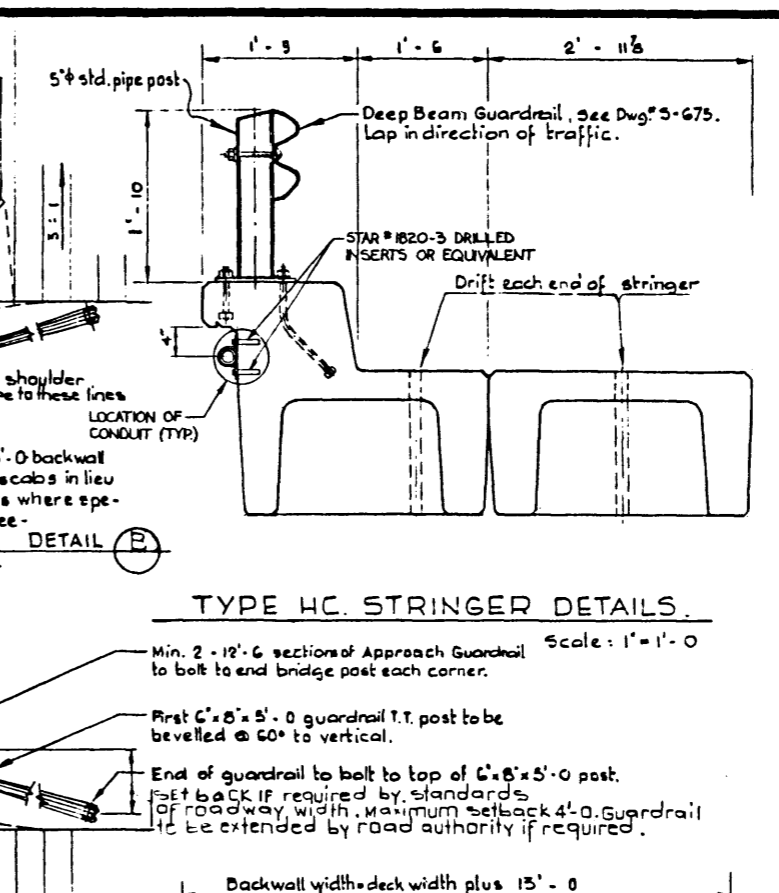
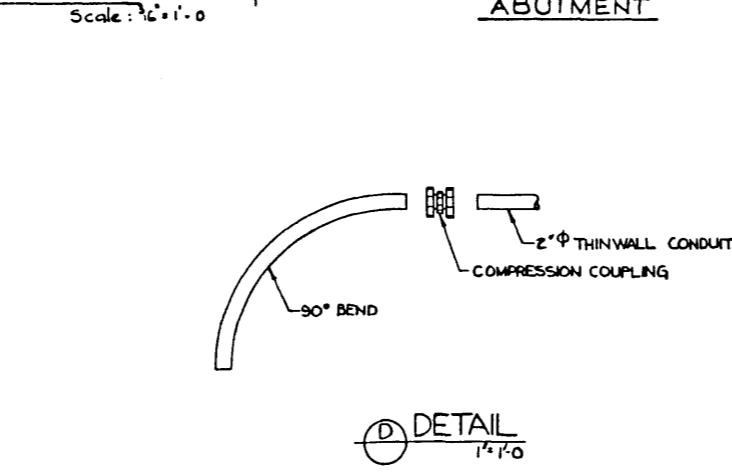


PILE SPACING
(Spacing to be centre to centre)

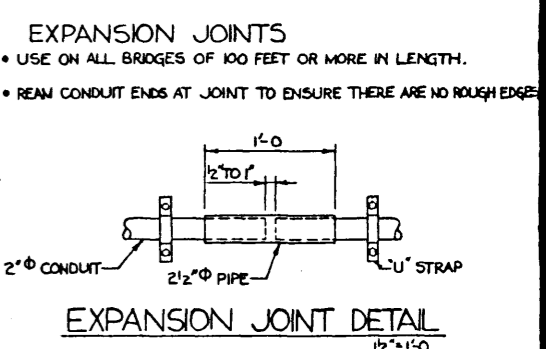
Clear Roadway	Slew	20' Span Abutment		26' Span Abutment		20'-26' Span Pier		20'-26' Span Pier		26'-26' Span Pier	
		No. of Piles	Pile Sp.	No. of Piles	Pile Sp.	No. of Piles	Pile Sp.	No. of Piles	Pile Sp.	No. of Piles	Pile Sp.
21'	0'	5	5'-3"	5	5'-3"	6	4'-2 1/2"	6	4'-2 1/2"	7	3'-6"
	15'	6	5'-3 1/2"	5	5'-5 1/4"	6	4'-4 1/16"	6	4'-4 1/16"	7	3'-7 1/2"
	30'	5	6'-0"	5	6'-0"	6	4'-10 1/4"	6	4'-10 1/4"	7	4'-0 1/8"
24'	0'	5	6'-0"	6	4'-9 3/8"	6	4'-9 3/8"	7	4'-0"	8	3'-5 1/8"
	15'	5	6'-2 1/2"	6	4'-11 3/8"	6	4'-11 3/8"	7	4'-1 1/16"	8	3'-6 1/8"
	30'	5	6'-11 3/8"	6	5'-6 1/2"	6	5'-6 1/2"	7	4'-7 1/4"	8	3'-11 1/2"
27'	0'	5	6'-5 1/2"	6	6'-9 1/2"	6	6'-9 1/2"	7	5'-7 3/8"	8	4'-10 1/2"
	15'	6	5'-4 1/2"	7	4'-6"	7	4'-6"	8	3'-10 3/4"	9	3'-10 3/4"
	30'	6	6'-2 1/2"	7	4'-7 1/2"	7	4'-7 1/2"	8	3'-11 1/16"	8	3'-11 1/16"
30'	0'	5	6'-11 3/8"	6	6'-9 1/2"	6	6'-9 1/2"	7	5'-7 3/8"	8	4'-10 1/2"
	15'	6	6'-11 3/8"	7	5'-0"	8	4'-5 1/4"	8	4'-3 1/4"	9	3'-9"
	30'	6	6'-11 3/8"	7	5'-9 1/4"	8	4'-11 3/8"	8	4'-11 3/8"	9	4'-5 1/4"



BILL OF HARDWARE

Mark	Size	Type	Washers	Placing & No. Required
1	3/4 x 22	Drifts		Caps & subcaps to piles
2	3/4 x 24	Headless Drifts		Stringer & curbs to caps 2 per stringer, 2 per curb
3	3/8 x 26	Machine Bolts	2 - 3/8 O.G.	Cap splice - 4 per splice
4	3/8 x 22			Double sway brace to cap
5	3/8 x 20			Single sway brace to cap
6	3/8 x 7	Flexbeam Bolts	1 - 3/8 Lock	Guardrail to Post
7	3/8 x 14			Guardrail splice - 5 per splice

- GENERAL NOTES-A.G.T.**
- CONDUIT IS TO BE ATTACHED TO CONCRETE CURBS BY "U" STRAPS AND DRILLED INSERTS. ON CONCRETE BRIDGES WITH TIMBER HANDRAIL POSTS, THE CONDUIT MAY BE CLAMPED TO THE HANDRAIL POSTS WITH "U" STRAPS AND LAG BOLTS BELOW DECK ELEVATION.
 - ON CONCRETE CURBS, "U" STRAPS SHOULD BE SPACED A 3 FEET WITH A MINIMUM OF 3 STRAPS USED ON ANY HORIZONTAL RUN.
 - IF CONDUIT RUNS THROUGH TIMBER BACKWALL, SHEETING MUST BE DRILLED TO EXACT SIZE OF CONDUIT DIAMETER AND THE RESULTING HOLE CAREFULLY FIELD TREATED WITH BRUSH GRADE CREOSOTE.
 - EXCAVATION BEHIND BACKWALL MUST BE DONE BY HAND TO AVOID DAMAGE TO ANCHOR TIES.
 - THE CABLE SHOULD BE KEPT AWAY FROM SHOULDER OF ROADWAY.



APPROVED

Alberta TRANSPORTATION BRIDGE BRANCH

CONDUIT ATTACHMENT TO STANDARD PRECAST BRIDGES WITH TREATED TIMBER SUBSTRUCTURE

DESIGNED: C.W.P. DRAWN BY: D.K.O. DATE: APRIL 78 CHECKED BY: DATE: STREAM: LOCATION: HWY NO: SCALE: FILE NO: SHEET: DWG NO: 5-1176