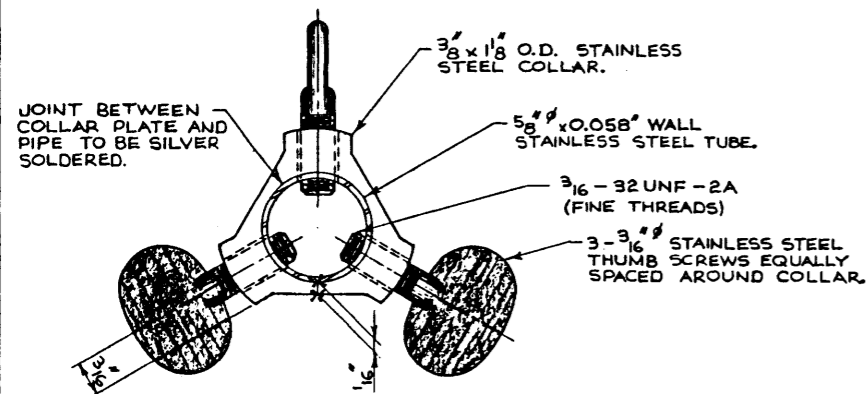


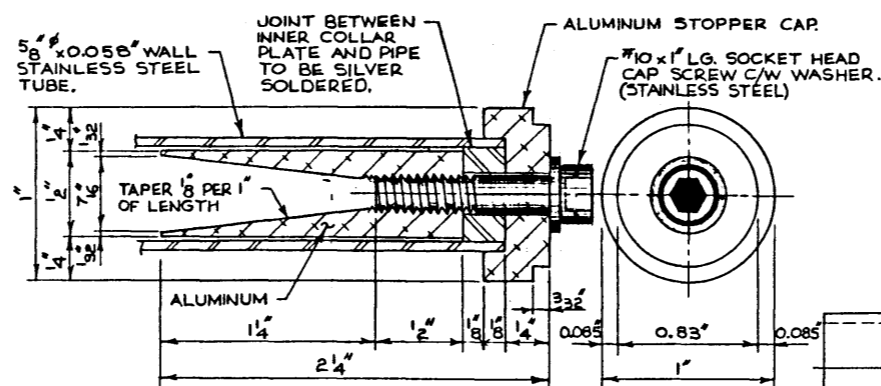
LONGITUDINAL CROSS SECTION (PLAN)
1=1

GENERAL NOTES

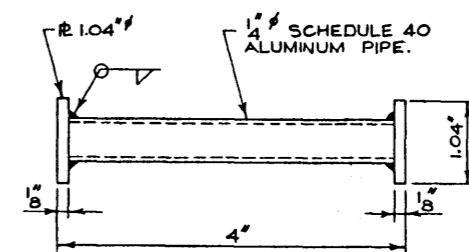
- ALL FILLETS AND ROUNDS = 1/8" R.
- WELDING TO BE DONE BEFORE MACHINING WHERE PRACTICAL SO AS TO MAINTAIN TRUENESS OF FINISHED ITEM.
- THE MAIN TRUENESS REQUIRED IS IN STRAIGHTNESS OF THE DRIVING ROLLER AND EXTENSIONS WHEN ASSEMBLED AND PARALLELNESS OF THESE TO THE FREE ROLLER.
- TOLERANCES, DIMENSIONS AND COMMERCIALY AVAILABLE PARTS ARE SHOWN WITH THE PURPOSE OF FACILITATING CONSTRUCTION. SUBSTITUTIONS AND CHANGES MAY BE MADE IF FUNCTION AND DURABILITY OF FINISHED ITEM IS MAINTAINED.
- NO MATERIALS SHOULD BE SUBSTITUTED WHICH REACT WITH ALUMINUM. eg. STEEL OTHER THAN STAINLESS.
- ALUMINUM PIPE IS CUSTOMARILY SUPPLIED IN 6351-T6 GRADE. eg. BY WILKINSON COMPANY LIMITED.
- STAINLESS STEEL TUBING CALLED UP IS SOLD AS "TYPE 304 SEAMLESS" BY THE WILKINSON COMPANY LIMITED.
- BALL BUSHINGS AND SAMPLE SHAFT ARE AVAILABLE FROM "RHP CANADA LIMITED" (EDMONTON BRANCH, 4244-99 STREET)



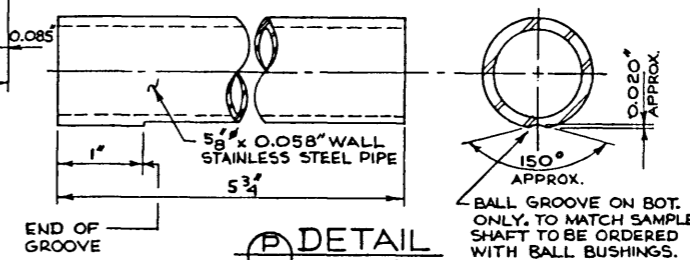
SECTION A
2=1



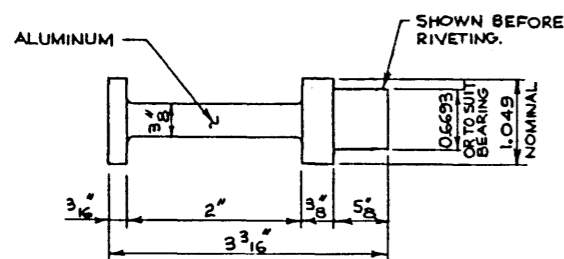
DETAIL Q
2=1



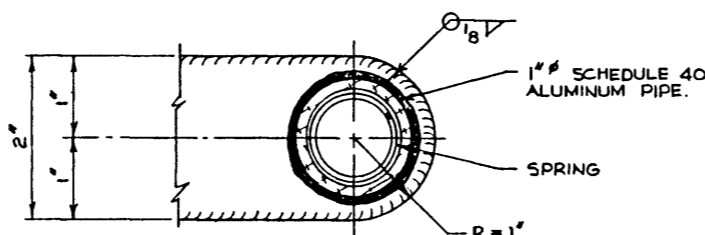
DETAIL R
1 REQ'D
1=1



DETAIL P
2=1



DETAIL S
1=1



SECTION B
1=1

APPROVED				Albera TRANSPORTATION BRIDGE BRANCH			
CHIEF BRIDGE ENGINEER				EXTENSION INSTRUMENT FOR PILING SET-REBOUND MEASUREMENTS - SHEET #1			
NO.	DATE	DESCRIPTION	DATE	DESIGNED	DRAWN BY	DATE	CHECKED BY
				C. W. PETERSON	W. S.	79-08-14	
REVISIONS				STREAM	LOCATION	HWY NO	SCALE
							FILE NO
							SHEET
							1 OF 2
							DWG NO
							S-1180