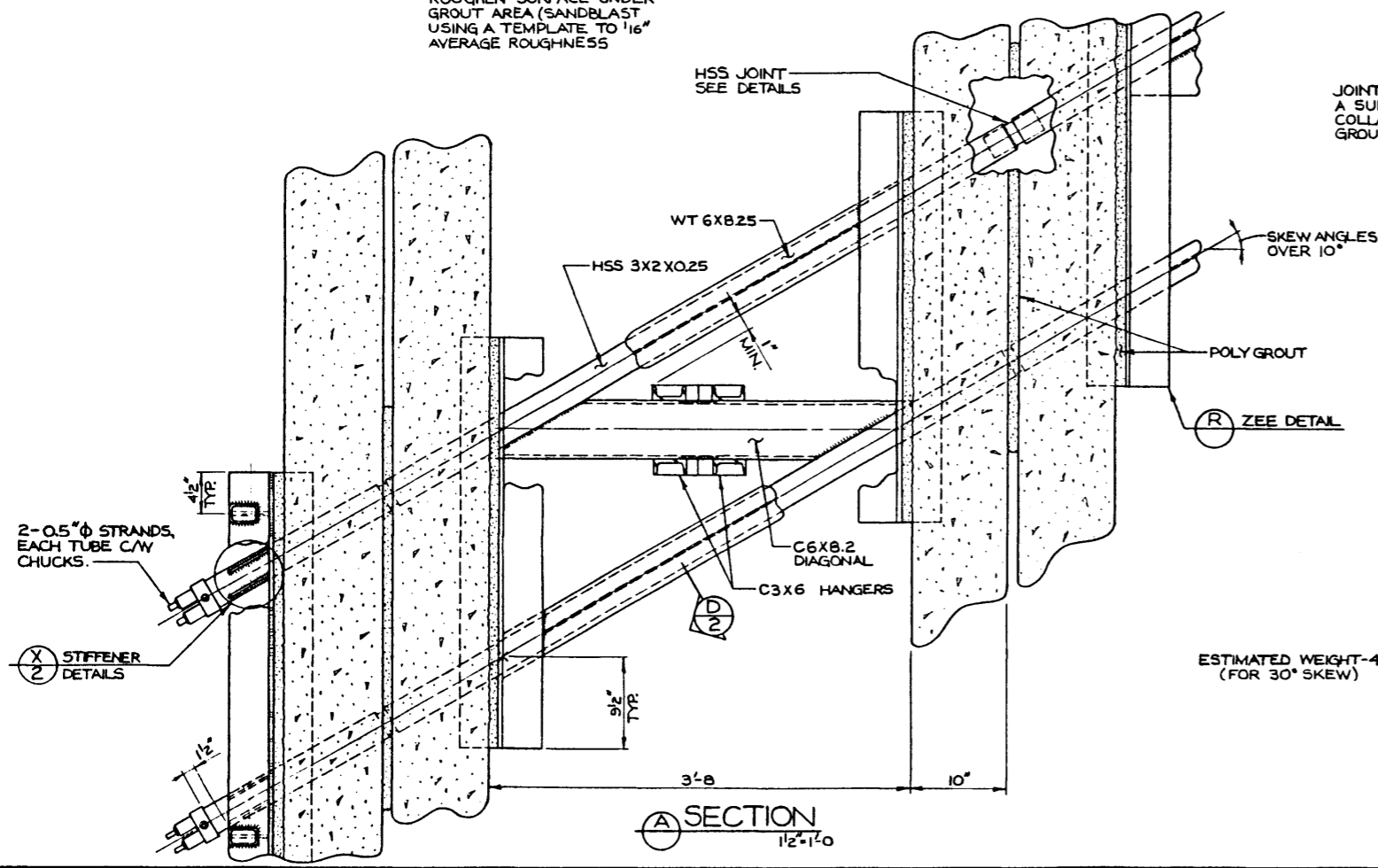


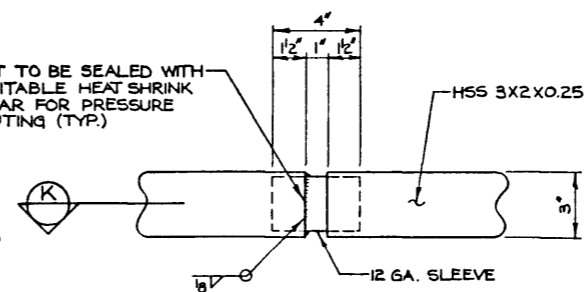
ELEVATION
1/2"=1'-0"

ROUGHEN SURFACE UNDER GROUT AREA (SANDBLAST USING A TEMPLATE TO 1/16" AVERAGE ROUGHNESS)

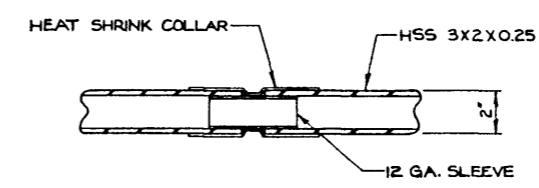
JOINT TO BE SEALED WITH A SUITABLE HEAT SHRINK COLLAR FOR PRESSURE GROUTING (TYP.)



SECTION A
1/2"=1'-0"

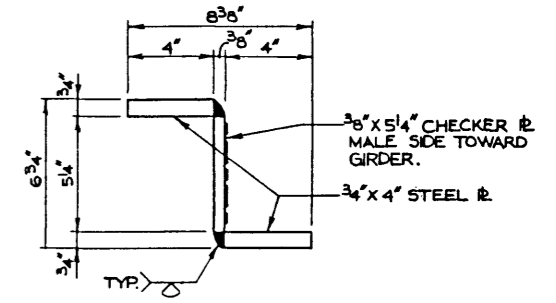


PLAN

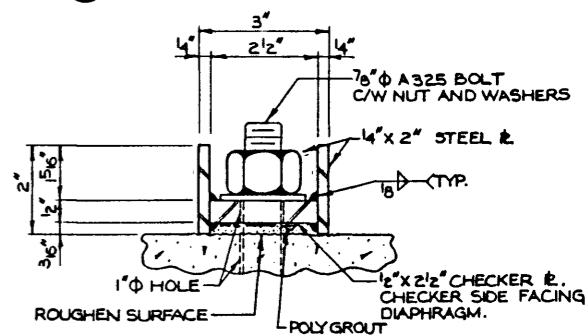


SECTION K

SECTION P
3/8"=1'-0"



SECTION R
3/8"=1'-0"



SECTION C
6"=1'-0"

ESTIMATED WEIGHT-454 LBS/BAY (FOR 30° SKEW)

*WORK THIS DRAWING IN CONJUNCTION WITH DWG. 5-1185

*FOR USE WITH SKEWS OVER 10°

DESIGNED C.W. PETERSON				DRAWN BY D.K.O.		DATE 79 07 25		CHECKED BY		DATE		APPROVED CHIEF BRIDGE ENGINEER		Alberta TRANSPORTATION BRIDGE BRANCH LATERAL PRE-STRESSING ATTACHMENT FOR VF GIRDERS DETAILS-SHEET #1											
NO. DATE DESCRIPTION REVISIONS DATE												STREAM		LOCATION		HWY. NO.		SCALE SHOWN		FILE NO.		SHEET 1 of 2		DWG. NO. 5-1184	