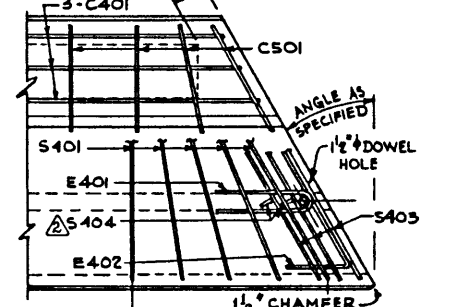
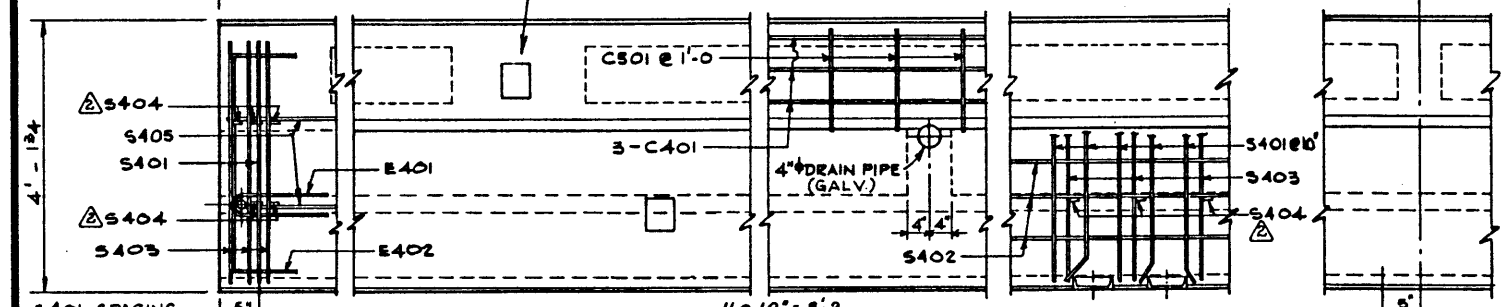
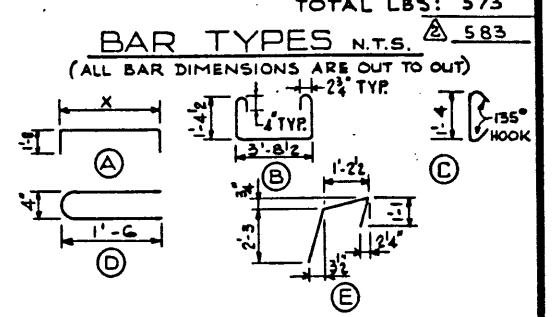
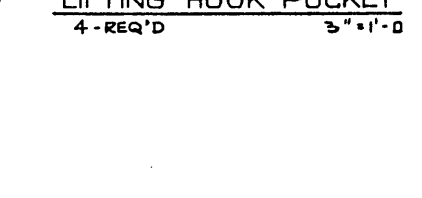
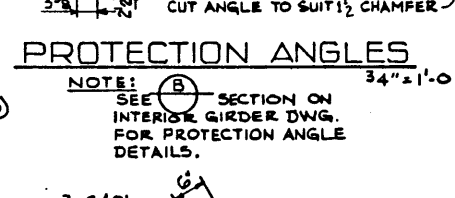
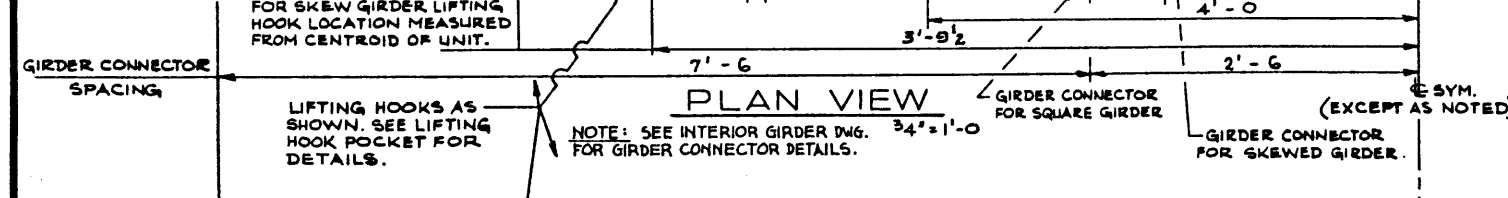


BAR LIST: FOR UNSKEWED GIRDER

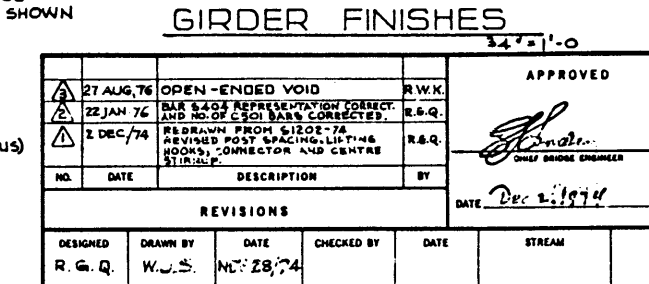
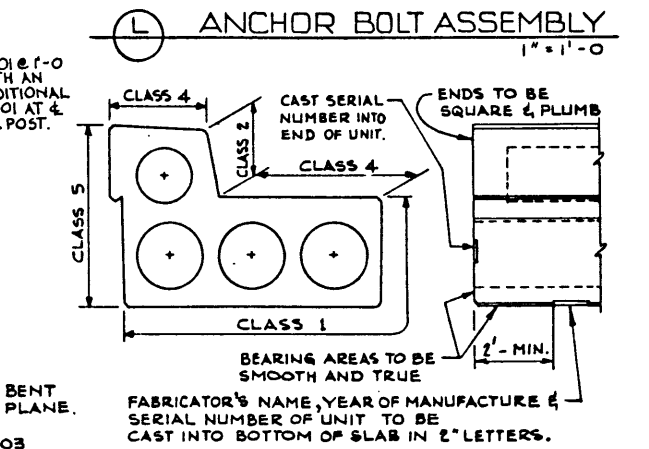
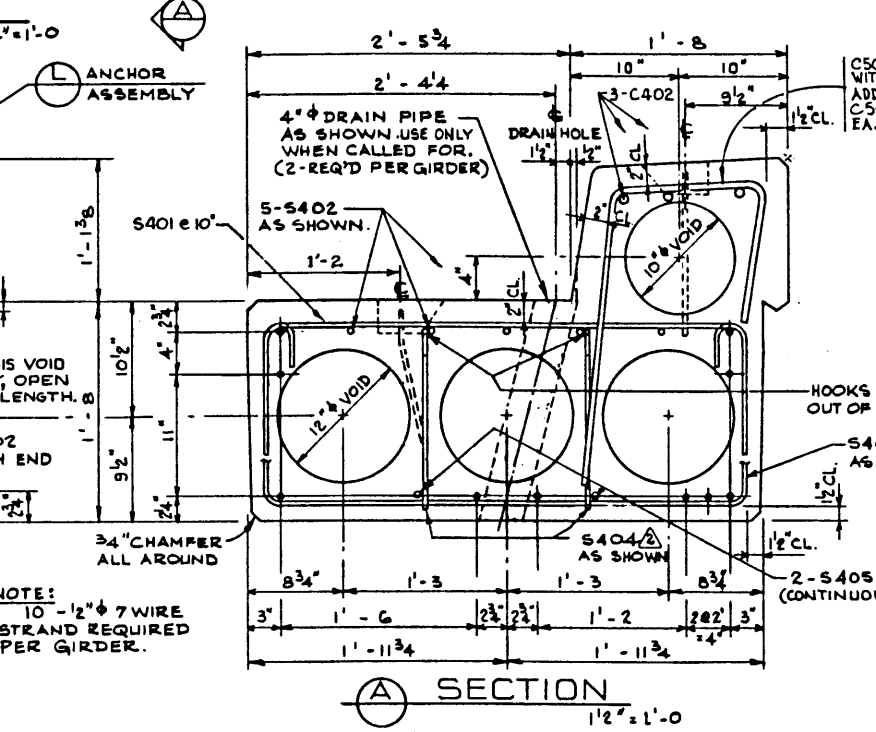
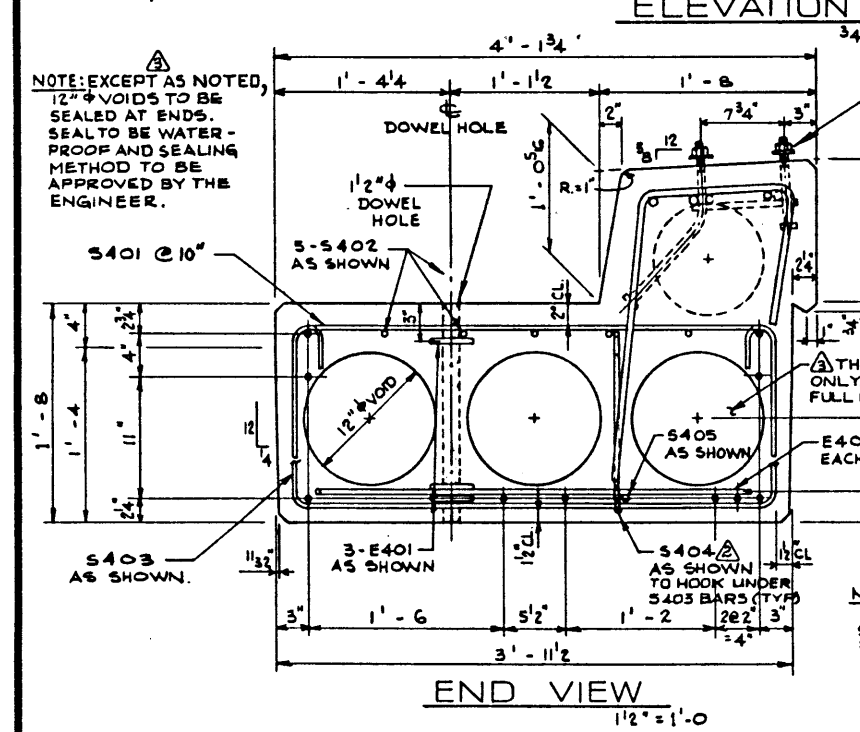
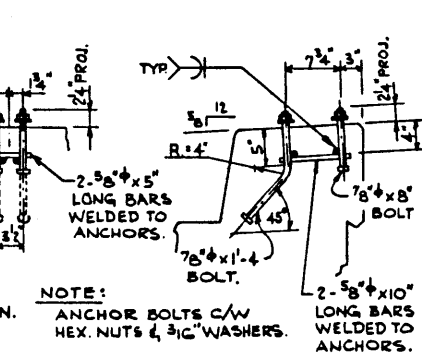
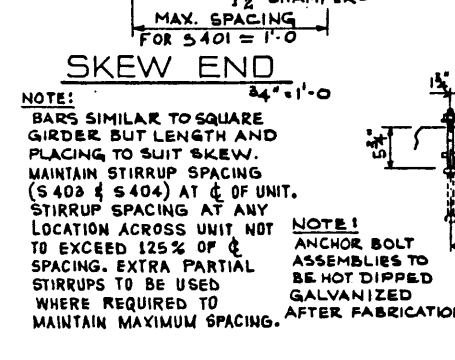
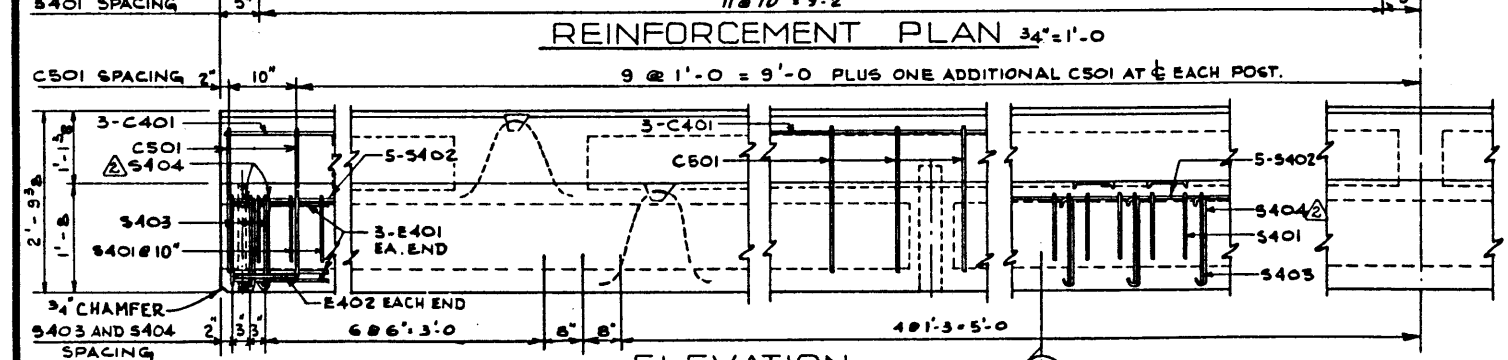
MARK	SIZE	NO	TYPE	X	Y	LENGTH	WEIGHT
S 401	4	24	A	3'-8 1/2"		5'-9"	92
S 402	4	5	STR.			19'-8"	66
S 403	4	29	B			7'-4"	142
S 404	4	56	C			2'-1"	78
S 405	4	2	STR.			19'-4"	26
E 401	4	6	D			3'-4"	13
E 402	4	2	A	3'-4"		5'-4"	7
C 401	4	3	STR.			19'-8"	39
C 501	5	25	E			4'-7"	120

TOTAL LBS: 573



GENERAL NOTES

- DESIGN:**
- A.A.S.H.O. 1973 SPECIFICATION EXCEPT AS MODIFIED BELOW.
 - ALLOWABLE TENSION AT 80% MODULUS OF RUPTURE.
 - NO TENSION IN DECK SURFACE.
 - WEB REINFORCEMENT - ACCORDING TO A.C.I. 318-71 BUT NOT LESS THAN A.A.S.H.O. MINIMUM.
 - LOADING LIVE LOAD - A.A.S.H.O. HS-25-44
 - ONE WHEEL LINE PER GIRDER
 - DEAD LOAD - GIRDER = 0.663 KPS/FT.
 - WEARING SURFACE = 0.063 KPS/FT.
- MATERIALS:**
- CONCRETE IN GIRDER SHALL BE MADE OF LIGHTWEIGHT COARSE AGGREGATE AND SAND FINES.
 - CONCRETE 28 DAY STRENGTH 5,000 PSI.
 - RELEASE STRENGTH 4,000 PSI.
 - UNIT WEIGHT OF SEMI-LIGHTWEIGHT CONCRETE 120 LB./CU. FT.
 - PRESTRESSING STEEL SHALL BE 1/2" DIAMETER - 7 WIRE 270 K STRAND.
- FABRICATION:**
- GIRDERS SHALL CONFORM TO THE REQUIREMENTS OF THE ALBERTA BRIDGE BRANCH SPECIFICATION FOR THE MANUFACTURE OF PRESTRESSED CONCRETE BRIDGE UNITS.
 - FORCE IN PRESTRESSING STEEL: INITIAL TENSIONING LOAD = 28.73 K/STRAND DESIGN LOAD AFTER LOSSES = 22.85 K/STRAND
 - CURB TO BE CAST MONOLITHICALLY WITH GIRDER.
 - ANCHOR BOLT ASSEMBLIES SHALL BE CAST IN GIRDER AT SPACINGS AS SHOWN.
 - BEND OR SHIFT REINFORCING WHERE REQUIRED TO CLEAR GIRDER CONNECTORS, LIFTING HOOK, & ANCHOR BOLT ASSEMBLIES. STIRRUP SPACING TO BE MAINTAINED.
- ERECTION:**
- ANY FREE SPACE BETWEEN CONNECTORS SHALL BE FILLED WITH WASHERS.
 - CALCULATED WEIGHT OF ONE GIRDER IS 13,780 LBS.



REVISIONS

NO.	DATE	DESCRIPTION	BY
1	27 AUG 76	OPEN ENDED VOID	R.W.K.
2	22 JAN 76	BAR SIZES REPRESENTATION CORRECT AND NO. OF CS01 BARS CORRECTED.	R.B.Q.
3	2 DEC 74	REDRAWN FROM S1202-74 REVISED POST SPACING, LIFTING HOOKS, CONNECTOR AND CENTRE STIRRUP.	R.B.Q.

DESIGNED: R.G.Q. DRAWN BY: W.J.S. DATE: NOV 28 74 CHECKED BY: DATE: STREAM: LOCATION: HWY. NO.: SCALE: FILE NO.: SHEET: DWG. NO.: S1202-74A

Albera HIGHWAYS AND TRANSPORT BRIDGE BRANCH

20 FT. TYPE VS-20 CURB GIRDER SEMI-LIGHTWT. CONCRETE

DATE: Dec 2, 1974