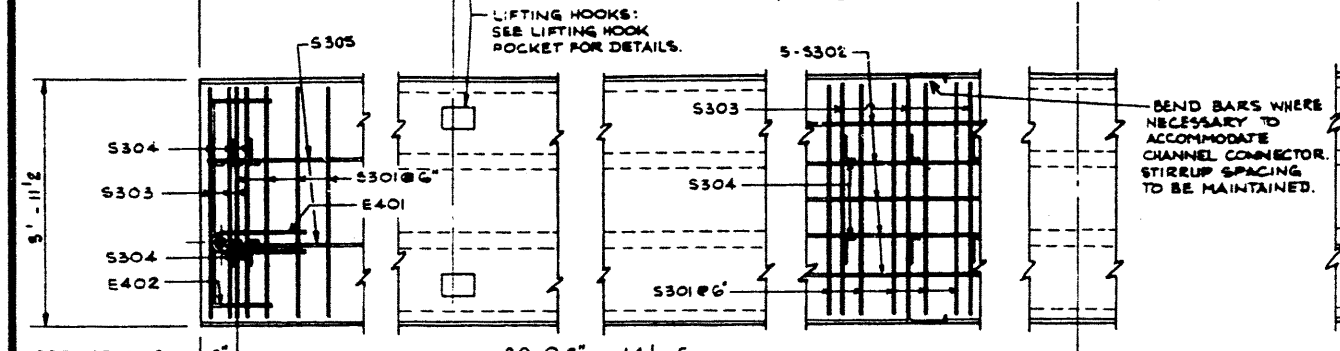
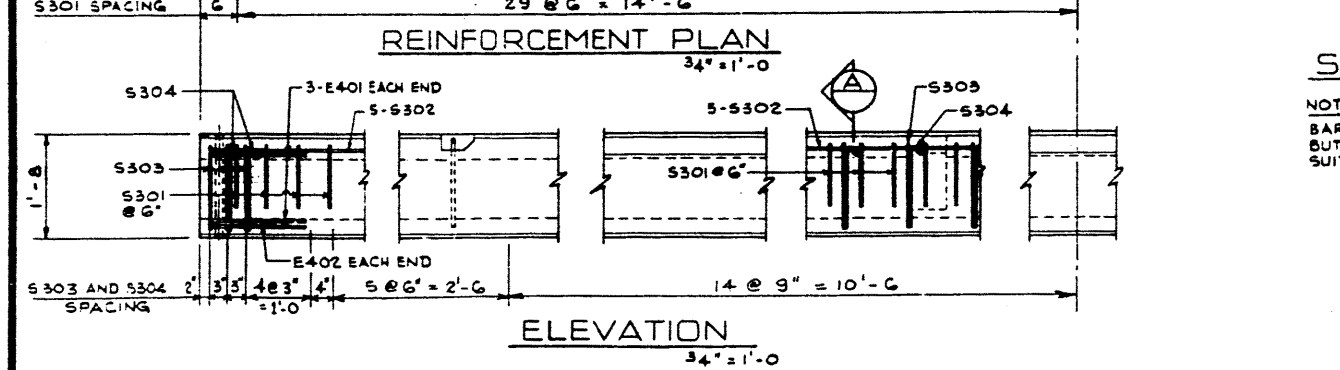


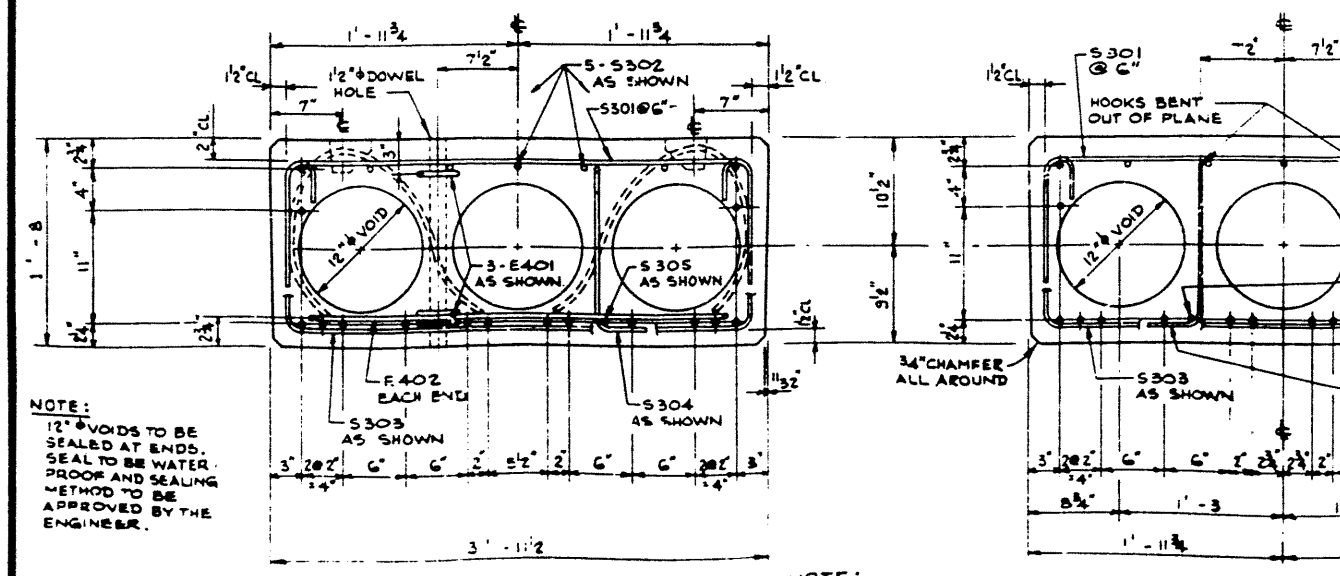
PLAN VIEW
34' = 1'-0"



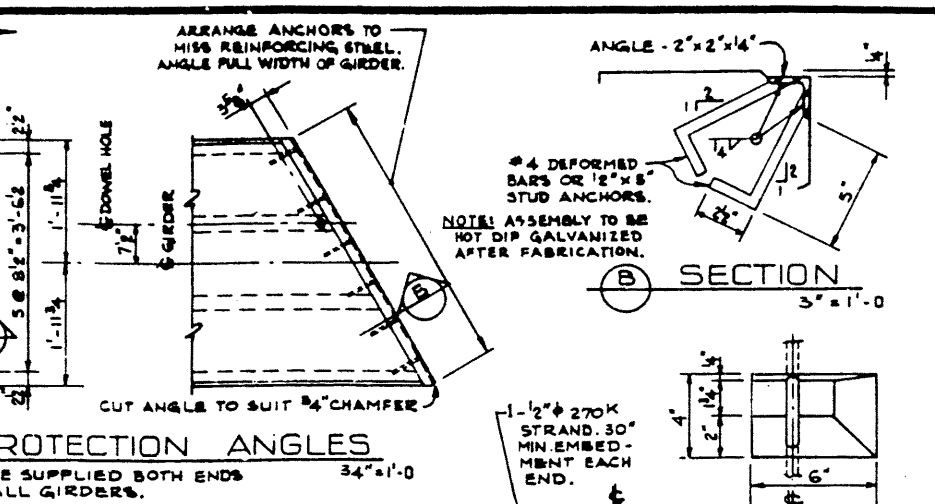
REINFORCEMENT PLAN
34' = 1'-0"



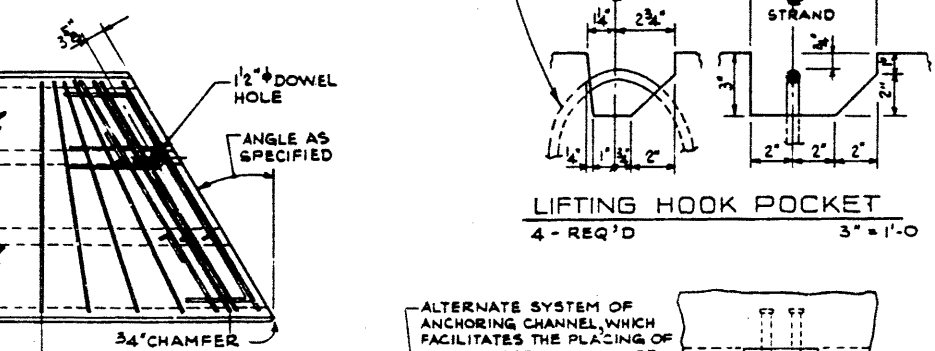
ELEVATION
34' = 1'-0"



END VIEW
11'2" = 1'-0"

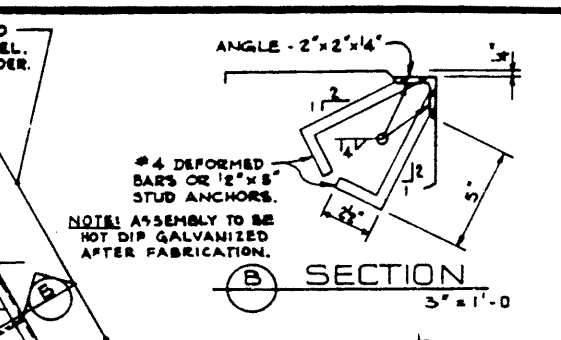


PROTECTION ANGLES
34' = 1'-0"

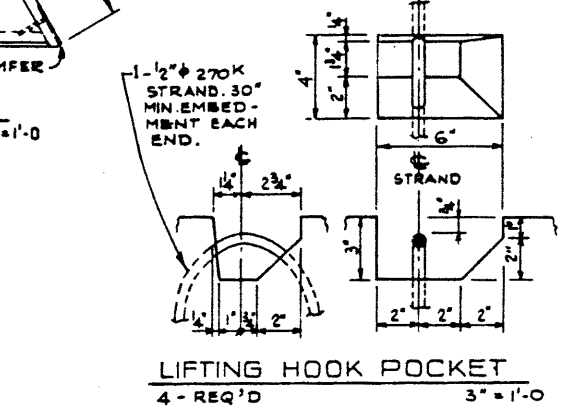


SKEW END
34' = 1'-0"

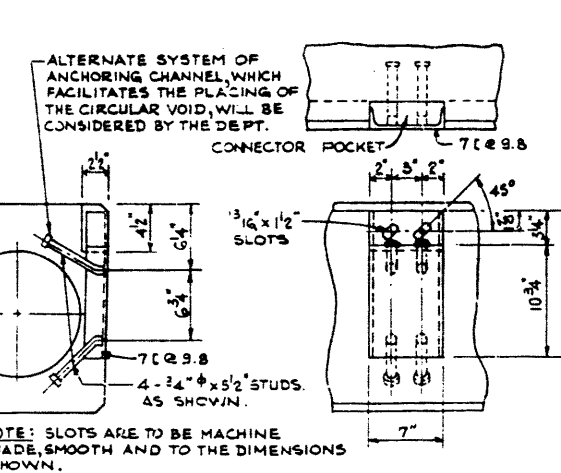
NOTE:
BARS SIMILAR TO SQUARE GIRDER BUT LENGTH AND PLACING TO SUIT SKEW.



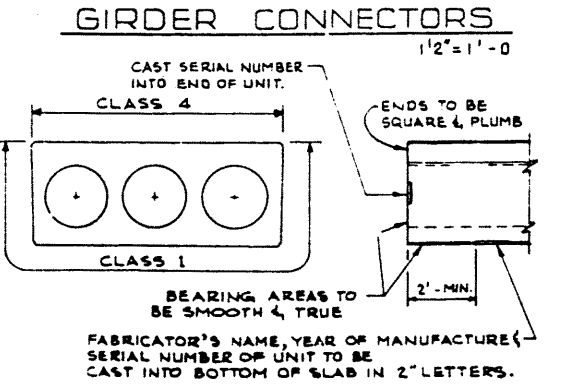
SECTION B
3" = 1'-0"



LIFTING HOOK POCKET
4 - REQ'D



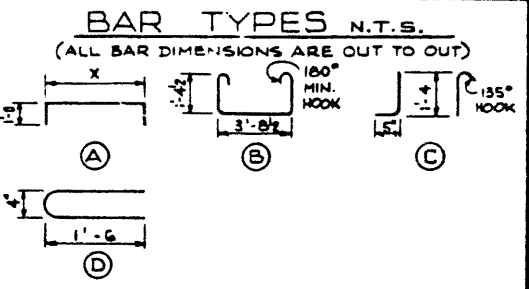
NOTE: SLOTS ARE TO BE MACHINE MADE, SMOOTH AND TO THE DIMENSIONS SHOWN.



GIRDER FINISHES
34' = 1'-0"

BAR LIST: FOR UNSKEWED GIRDER						
MARK	SIZE	NO.	TYPE	X	Y	WEIGHT
S 301	3	59	A	3'-0 1/2		12.8
S 302	3	5	STR			5.6
S 303	3	53	B			14.6
S 304	3	104	C			8.1
S 305	3	2	STR			22
E 401	4	6	D			13
E 402	4	2	A	3'-4		7

TOTAL LBS: 453



GENERAL NOTES

- DESIGN:
- A.A.S.H.O. 1973 SPECIFICATION EXCEPT AS MODIFIED BELOW.
 - ALLOWABLE TENSION AT 80% MODULUS OF RUPTURE.
 - NO TENSION IN DECK SURFACE.
 - WEB REINFORCEMENT - ACCORDING TO A.C.I. 318-71 BUT NOT LESS THAN A.A.S.H.O. MINIMUM.
 - LOADING LIVE LOAD - A.A.S.H.O. HS-20-44 ONE WHEEL LINE PER GIRDER
 - DEAD LOAD - GIRDER = 0.524 KIPS/FT.
 - WEARING SURFACE = 0.100 KIPS/FT.
- MATERIALS:
- CONCRETE IN GIRDER SHALL BE MADE OF LIGHTWEIGHT COARSE AGGREGATE AND SAND FINES.
 - CONCRETE 28 DAY STRENGTH 5,000 PSI.
 - RELEASE STRENGTH 4,000 PSI.
 - UNIT WEIGHT OF SEMI-LIGHTWEIGHT CONCRETE 120 LB./CU. FT.
 - PRESTRESSING STEEL SHALL BE 1/2" DIAMETER - 7 WIRE 270 K STRAND
- FABRICATION:
- GIRDERS SHALL CONFORM TO THE REQUIREMENTS OF THE ALBERTA BRIDGE BRANCH SPECIFICATION FOR THE MANUFACTURE OF PRESTRESSED CONCRETE BRIDGE UNITS.
 - FORCE IN PRESTRESSING STEEL: INITIAL TENSIONING LOAD = 2.8.73 K/STRAND DESIGN LOAD AFTER LOSSES = 2.1.5.8 K/STRAND
 - BEND OR SHIFT REINFORCING WHERE REQUIRED TO CLEAR GIRDER CONNECTORS AND LIFTING HOOKS. STIRRUP SPACING TO BE MAINTAINED.
- SECTION:
- ANY FREE SPACE BETWEEN CONNECTORS SHALL BE FILLED WITH WASHERS.
 - CALCULATED WEIGHT OF ONE GIRDER = 770 LBS.

SUPERSEDED
SUPERSEDED BY S-1205-74 ①

NOTE:
12" VOIDS TO BE SEALED AT ENDS. SEAL TO BE WATER PROOF AND SEALING METHOD TO BE APPROVED BY THE ENGINEER.

NOTE:
16 - 1/2" #7 WIRE 5-STRAND, REQUIRED PER GIRDER.

APPROVED		Abena HIGHWAYS AND TRANSPORT BRIDGE BRANCH	
30 FT. TYPE VS-20 INTERIOR GIRDER		SEMI-LIGHTWT. CONCRETE	
S-1205		S-1205	
NO.	DATE	DESCRIPTION	BY
DESIGNED	DRAWN BY	CHECKED BY	DATE
R.G.R.	V.G.B.	FEB/74	
REVISIONS			
DESIGNED	DRAWN BY	CHECKED BY	DATE
R.G.R.	V.G.B.	FEB/74	