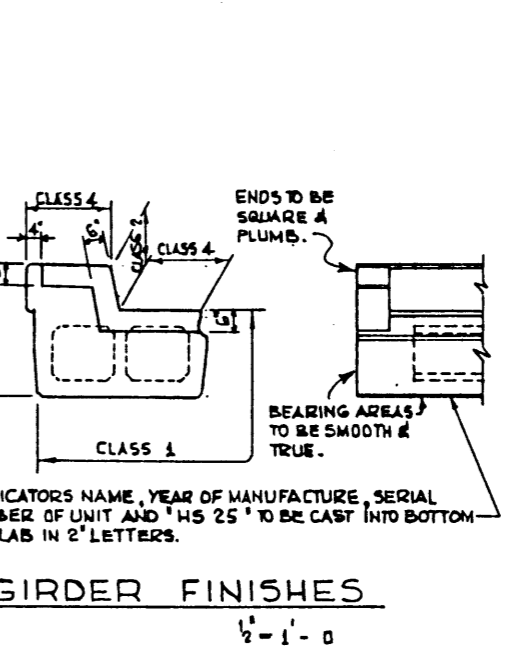
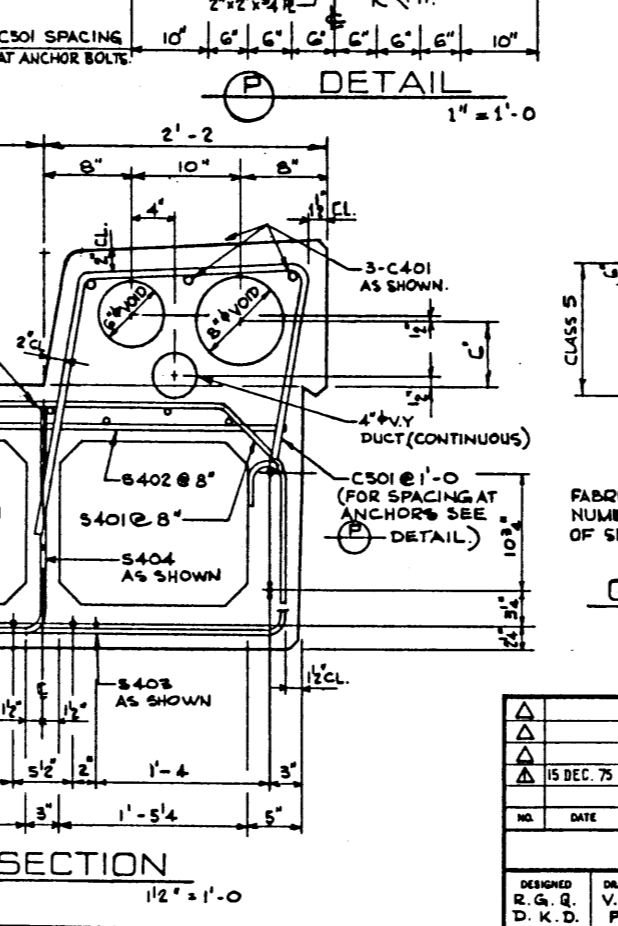
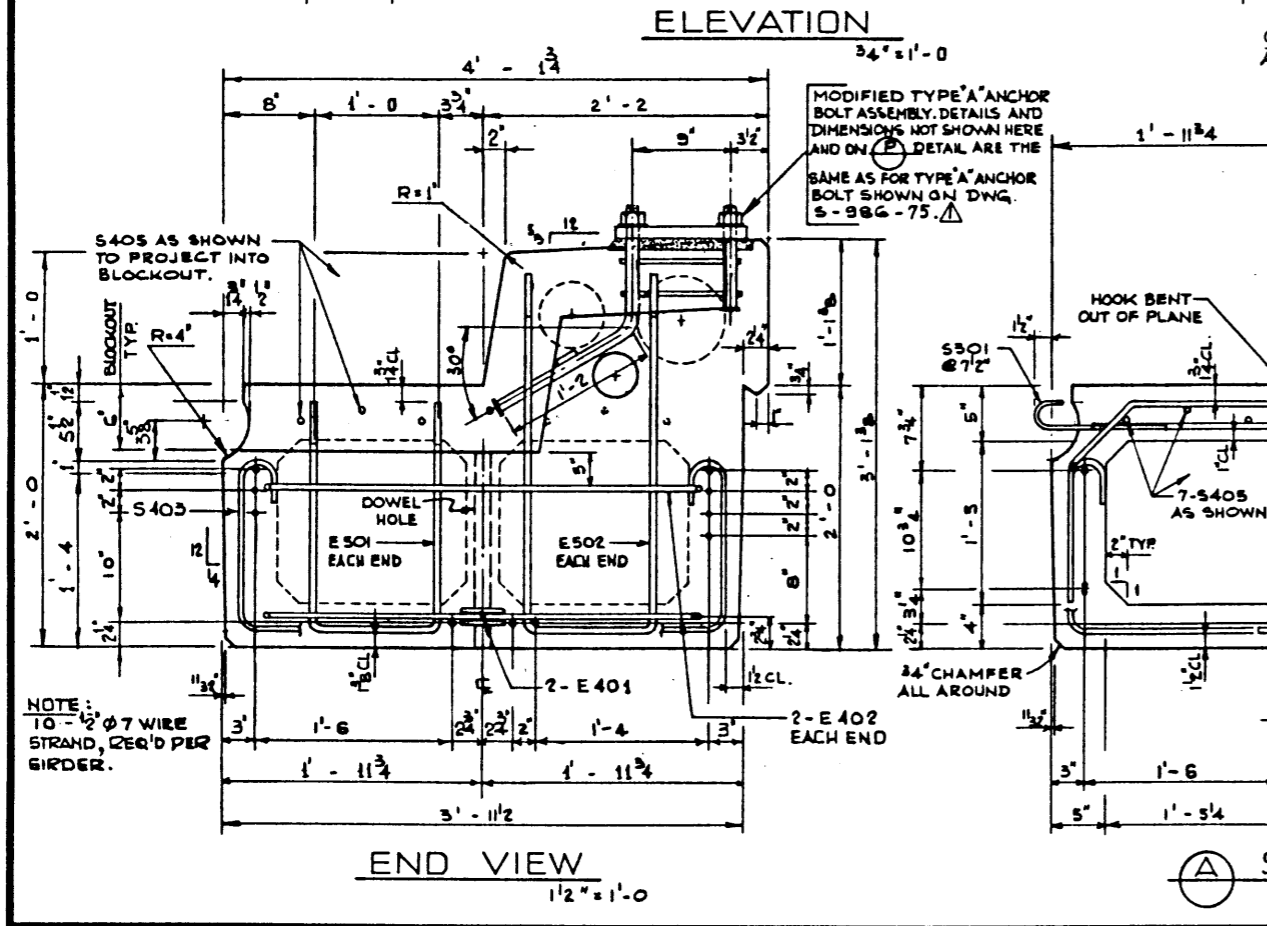


BAR LIST: FOR UNSKEWED GIRDER							
MARK	SIZE	NO.	TYPE	X	Y	LENGTH	WEIGHT
S 301	3	70	A			1'-5"	37
S 401	4	65	B			6'-2"	268
S 402	4	65	STR.			3'-4"	145
S 403	4	37	C			7'-5"	179
S 404	4	33	D			2'-6"	55
S 405	4	14	STR.			22'-10"	214
E 401	4	4	F			3'-4"	9
E 402	4	4	G			5'-4"	14
E 501	5	2	E	1'-8"		6'-4"	11
E 502	5	2	E	2'-8"		7'-3"	15
C 401	4	6	STR.			22'-10"	92
* C 501	5	56	H			5'-4"	312
						TOTAL LBS:	1344
							1351

* ASSUME 5 POSTS

- GENERAL NOTES**
- DESIGN:**
- A.A.S.H.O. 1973 SPECIFICATION EXCEPT AS MODIFIED BELOW.
 - ALLOWABLE TENSION AT 80% MODULUS OF RUPTURE.
 - NO TENSION IN DECK SURFACE.
 - WEB REINFORCEMENT - ACCORDING TO A.C.I. 318-71 BUT NOT LESS THAN A.A.S.H.O. MINIMUM.
 - LOADING LIVE LOAD - A.A.S.H.O. HS-20-44 0.70 WHEEL LINE PER GIRDER
 - DEAD LOAD - GIRDER = 0.85 KIP/FT. WEARING SURFACE = 0.10 KIP/FT.
- MATERIALS:**
- CONCRETE IN GIRDER SHALL BE MADE OF LIGHTWEIGHT COARSE AGGREGATE AND SAND FINES.
 - CONCRETE IN CURB SHALL BE MADE OF STANDARD WEIGHT AGGREGATES.
 - CONCRETE 28 DAY STRENGTH 5000 PSI.
 - RELEASE STRENGTH 4000 PSI.
 - UNIT WEIGHT OF SEMI-LIGHTWEIGHT CONCRETE 120 LB./CU. FT.
 - PRESTRESSING STEEL SHALL BE 1/2" DIAMETER - 7 WIRE 270 K STRAND.
- FABRICATION:**
- GIRDERS SHALL CONFORM TO THE REQUIREMENTS OF THE ALBERTA BRIDGE BRANCH SPECIFICATION FOR THE MANUFACTURE OF PRESTRESSED CONCRETE BRIDGE UNITS.
 - FORCE IN PRESTRESSING STEEL: INITIAL TENSIONING LOAD = 28.7 B K/STRAND DESIGN LOAD AFTER LOSSES = 23.07 K/STRAND
 - CURB TO BE CAST MONOLITHICALLY WITH GIRDER.
 - ANCHOR BOLT ASSEMBLIES SHALL BE CAST IN GIRDER AT SPACINGS AS REQUIRED.
- RECTION:**
- LIFTING FORCE AT EACH HOOK SHALL NOT EXCEED 35° FROM THE VERTICAL. GIRDER SURFACE MUST BE LEVEL AT ALL TIMES.
 - CALCULATED WEIGHT OF ONE GIRDER IS 55,860 LBS.



APPROVED <i>[Signature]</i> CHIEF BRIDGE ENGINEER			Alberta HIGHWAYS AND TRANSPORT BRIDGE BRANCH		
15 DEC. 75 REF. DWG. 5-986-74 TO -75, BAR LIST.			45 FT. TYPE RD-24 CURB GIRDER SEMI-LIGHTWT. CONCRETE		
NO. DATE DESCRIPTION BY			DATE JAN. 8 1976		
REVISIONS					
DESIGNED R.G.Q. D.K.D.	DRAWN BY V.G.B. P.S.Z.	DATE 16 OCT '75	CHECKED BY	DATE	STREAM
LOCATION		HWY. NO.	SCALE SHOWN	FILE NO.	SHEET OF
					DWG. NO. 5-1218