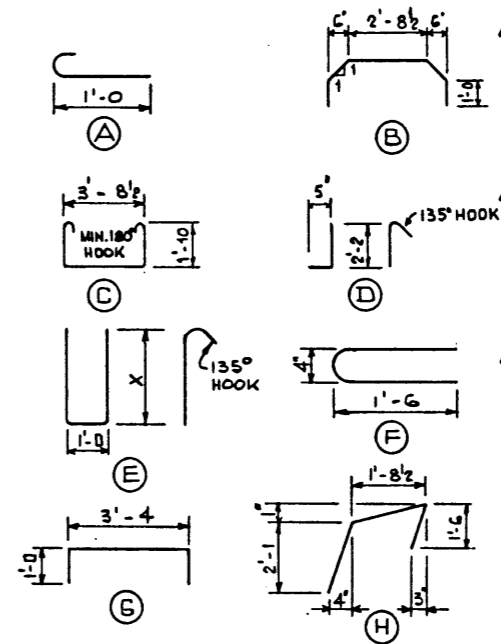


BAR TYPES N.T.S.

(ALL BAR DIMENSIONS ARE OUT TO OUT.)



BAR LIST : FOR UNSKEWED GIRDER

MARK	SIZE	NO.	TYPE	X	Y	LENGTH	WEIGHT
S 301	3	70	A			1' - 5	37
S 401	4	65	B			6' - 2	268
S 402	4	65	STR			3' - 4	145
S 403	4	37	C			8' - 3	204
S 404	4	53	D			3' - 0	66
S 405	4	14	STR			22' - 10	214
E 401	4	4	F			3' - 4	9
E 402	4	4	G			5' - 4	14
E 501	5	2	E	2'-2		6' - 4	13
E 502	5	2	E	3'-2		8' - 3	17
C 401	4	6	STR			22' - 10	92
C 501	5	56	H			5' - 4	312

* ASSUME 5 POSTS TOTAL LBS.: 1,396

GENERAL NOTES

- DESIGN:
- A.A.S.H.O. 1973 SPECIFICATION EXCEPT AS MODIFIED BELOW.
 - ALLOWABLE TENSION AT ϕ 80% MODULUS OF RUPTURE.
 - NO TENSION IN DECK SURFACE.
 - WEB REINFORCEMENT - ACCORDING TO A.C.I. 318-71 BUT NOT LESS THAN A.A.S.H.O. MINIMUM.
 - LOADING LIVE LOAD - A.A.S.H.O. HS-25-44
0.70 WHEEL LINE PER GIRDER
DEAD LOAD - GIRDER = 0.96 KPS/FT.
WEARING SURFACE = 0.10 KPS/FT.

MATERIALS:

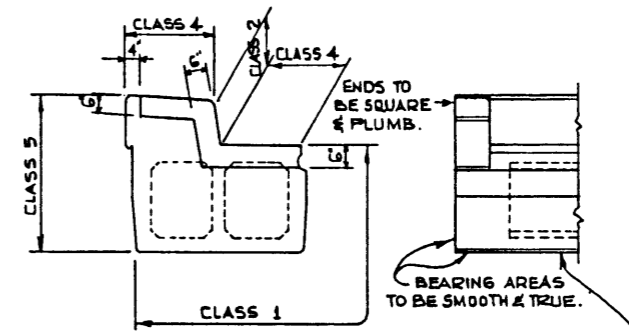
- CONCRETE IN GIRDER SHALL BE MADE OF LIGHTWEIGHT COARSE AGGREGATE AND SAND FINES.
- CONCRETE IN CURB SHALL BE MADE OF STANDARD WEIGHT AGGREGATES.
- CONCRETE 28 DAY STRENGTH 5,000 PSI.
- RELEASE STRENGTH 4,000 PSI.
- UNIT WEIGHT OF SEMI-LIGHTWEIGHT CONCRETE 120 LB./CU. FT.
- PRESTRESSING STEEL SHALL BE 1/2" DIAMETER - 7 WIRE 270 K STRAND.

FABRICATION:

- GIRDERS SHALL CONFORM TO THE REQUIREMENTS OF THE ALBERTA BRIDGE BRANCH SPECIFICATION FOR THE MANUFACTURE OF PRESTRESSED CONCRETE BRIDGE UNITS.
- FORCE IN PRESTRESSING STEEL:
INITIAL TENSIONING LOAD = 28.73 K/STRAND
DESIGN LOAD AFTER LOSSES = 23.12 K/STRAND
- CURB TO BE CAST MONOLITHICALLY WITH GIRDER.
- ANCHOR BOLT ASSEMBLIES SHALL BE CAST IN GIRDER AT SPACINGS AS REQUIRED.

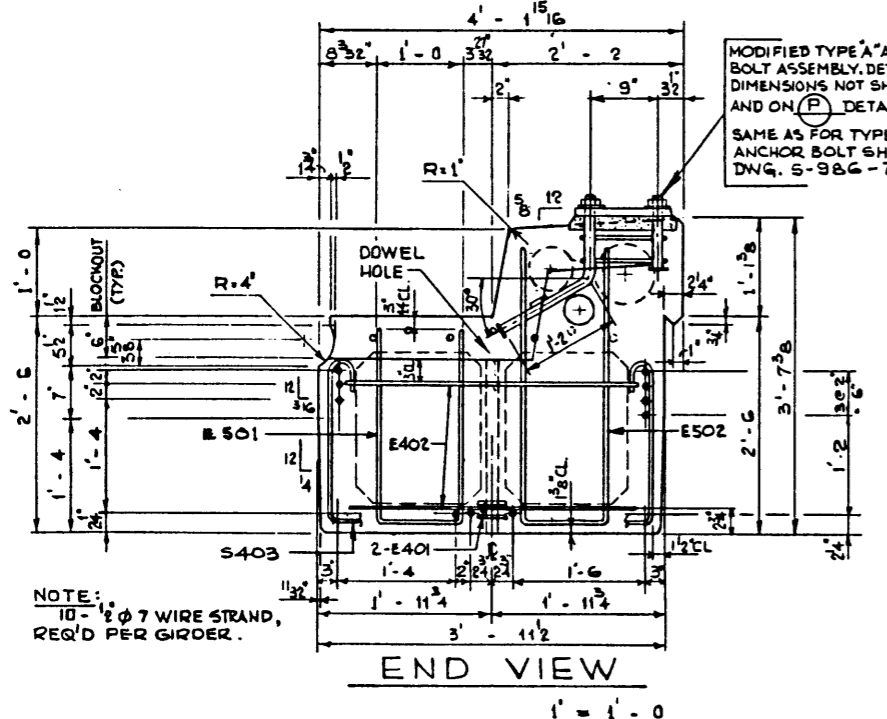
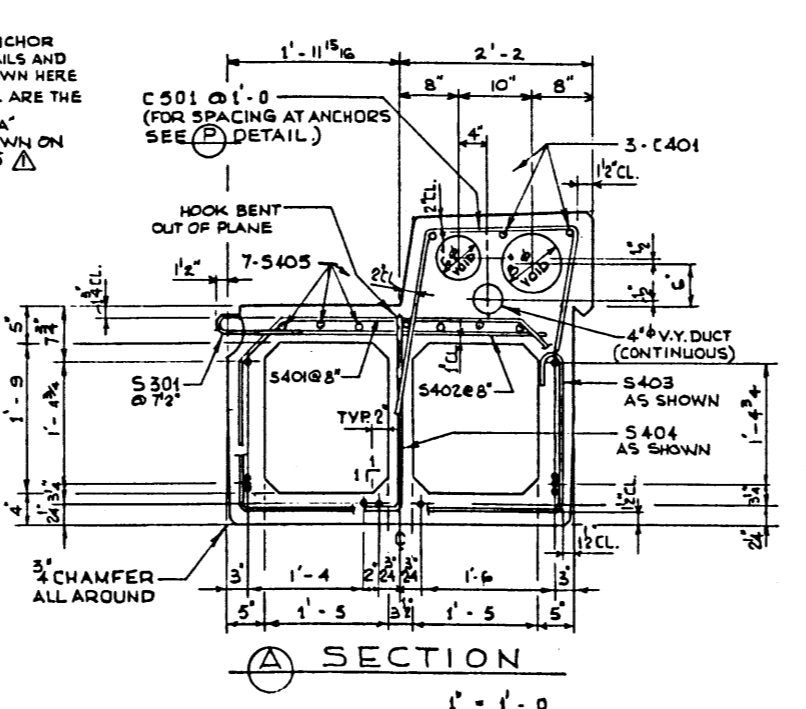
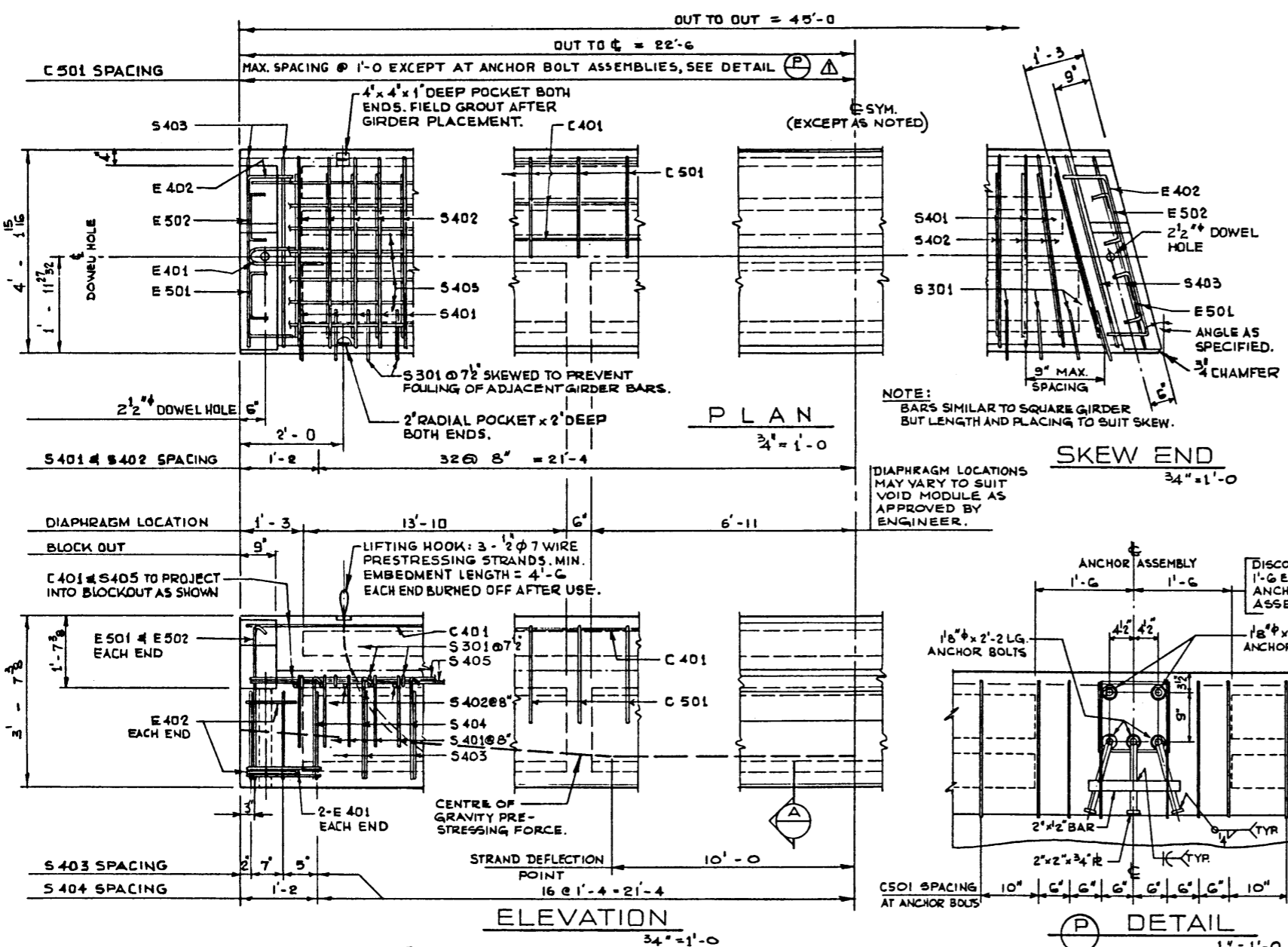
RECTION:

- LIFTING FORCE AT EACH HOOK SHALL NOT EXCEED 35° FROM THE VERTICAL. GIRDER SURFACE MUST BE LEVEL AT ALL TIMES.
- CALCULATED WEIGHT OF ONE GIRDER IS 4 015 0 LBS.



FABRICATOR'S NAME, YEAR OF MANUFACTURE, SERIAL NUMBER OF UNIT AND HS 25' TO BE CAST INTO BOTTOM OF SLAB IN 2" LETTERS.

GIRDER FINISHES



NOTE:
10 - 7 WIRE STRAND, REQ'D PER GIRDER.

REVISIONS			
NO.	DATE	DESCRIPTION	BY

APPROVED

18 DEC. 75 REF. DWG. 5-986-74 TO -75;
C501 SPACING CLARIFIED;

NO. DATE DESCRIPTION BY

DATE JAN 8 1976

DESIGNED BY R.G.R. D.K.D. DRAWN BY DATE CHECKED BY DATE STREAM LOCATION HWY. NO. SCALE FILE NO. SHEET DWG. NO.

Alberta HIGHWAYS AND TRANSPORT BRIDGE BRANCH

45 FT. TYPE RD - 30 CURB GIRDER

SEMI-LIGHTWT. CONCRETE

SHOWN S-1224