

NOTE:
DIAPHRAGM LOCATIONS
MAY VARY TO SUIT VOID
MODULE AS APPROVED
BY ENGINEER.

DIAPHRAGM LOCATION

S405 AS SHOWN
TO PROJECT INTO
BLOCKOUT.

2 - E501
EACH END

2 - E402
EACH END

2 - E401
EACH END

S403 SPACING 7'-5 1/8"
S404 SPACING 7'-0"

2 - E402 AS SHOWN

2 - E501 EACH END

2 - E401 AS SHOWN

2 - E402 AS SHOWN

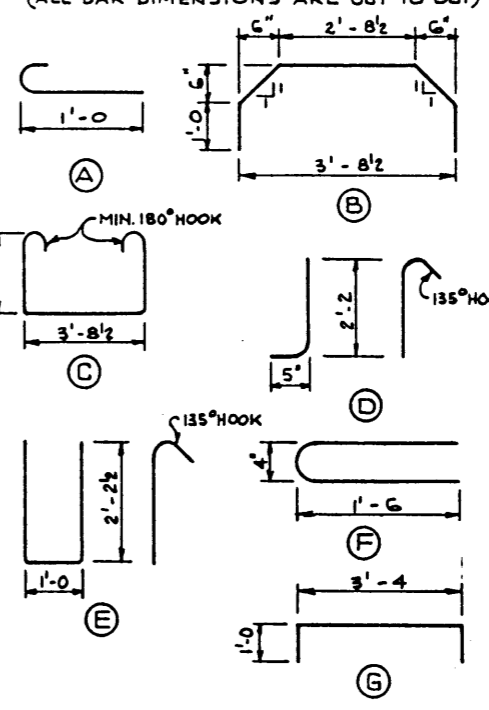
2 - E401 AS SHOWN

2 - E402 AS SHOWN

2 - E401 AS SHOWN

2 - E402 AS SHOWN

BAR TYPES N.T.S.
(ALL BAR DIMENSIONS ARE OUT TO OUT)



BAR LIST: FOR UNSKEWED GIRDER							
MARK	SIZE	NO.	TYPE	X	Y	LENGTH	WEIGHT
S 301	3	18B	A			1'-5	100
S 401	4	8B	B			6'-2	363
S 402	4	8B	STR			3'-4	196
S 403	4	50	C			8'-3	276
S 404	4	46	D			3'-0	92
S 405	4	14	STR			30'-4	284
E 501	5	4	E			6'-4	26
E 401	4	4	F			3'-4	9
E 402	4	4	G			5'-4	14
TOTAL LBS: 1371							1360

TOTAL LBS: 1371
1360

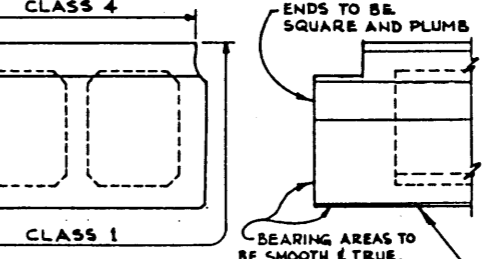
GENERAL NOTES

- DESIGN:**
- A.A.S.H.O. 1973 SPECIFICATION EXCEPT AS MODIFIED BELOW.
 - ALLOWABLE TENSION AT 80% MODULUS OF RUPTURE.
 - NO TENSION IN DECK SURFACE.
 - WEB REINFORCEMENT - ACCORDING TO A.C.I. 318-71 BUT NOT LESS THAN A.A.S.H.O. MINIMUM.
 - LOADING LIVE LOAD - A.A.S.H.O. HS-25-44
 - 0.70 WHEEL LINE PER GIRDER
 - DEAD LOAD - GIRDER = 0.64 KPS/FT.
 - WEARING SURFACE = 0.10 KPS/FT.

- MATERIALS:**
- CONCRETE IN GIRDER SHALL BE MADE OF LIGHTWEIGHT COARSE AGGREGATE AND SAND FINES.
 - CONCRETE 28 DAY STRENGTH 5000 PSI.
 - RELEASE STRENGTH 4000 PSI.
 - UNIT WEIGHT OF SEMI-LIGHTWEIGHT CONCRETE 120 LB./CU. FT.
 - PRESTRESSING STEEL SHALL BE 1/2" DIAMETER - 7 WIRE 270 K STRAND.

- FABRICATION:**
- GIRDERS SHALL CONFORM TO THE REQUIREMENTS OF THE ALBERTA BRIDGE BRANCH SPECIFICATION FOR THE MANUFACTURE OF PRESTRESSED CONCRETE BRIDGE UNITS.
 - FORCE IN PRESTRESSING STEEL:
INITIAL TENSIONING LOAD = 28.73 K/STRAND
DESIGN LOAD AFTER LOSSES = 20.81 K/STRAND

- ERECTION:**
- LIFTING FORCE AT EACH HOOK SHALL NOT EXCEED 35° FROM THE VERTICAL. GIRDER SURFACE MUST BE LEVEL AT ALL TIMES.
 - CALCULATED WEIGHT OF ONE GIRDER IS 38,420 LBS.

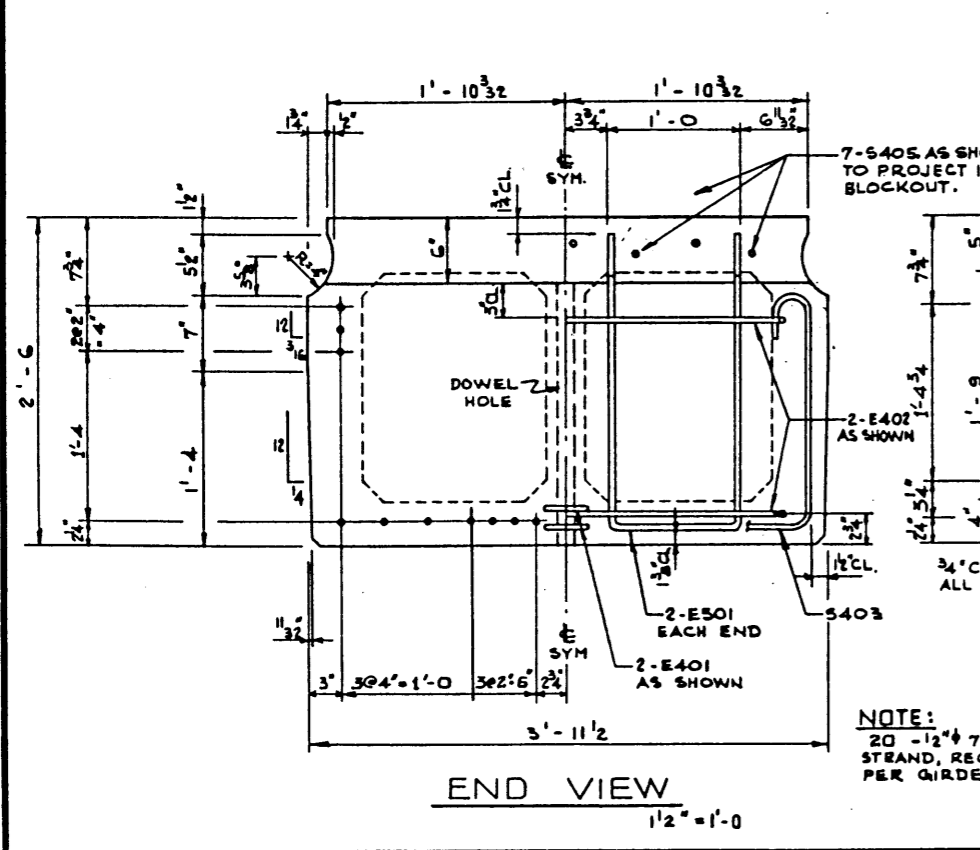


FABRICATOR'S NAME, YEAR OF MANUFACTURE, SERIAL NUMBER OF UNIT AND "HS 25" TO BE CAST INTO BOTTOM OF SLAB IN 2" LETTERS.

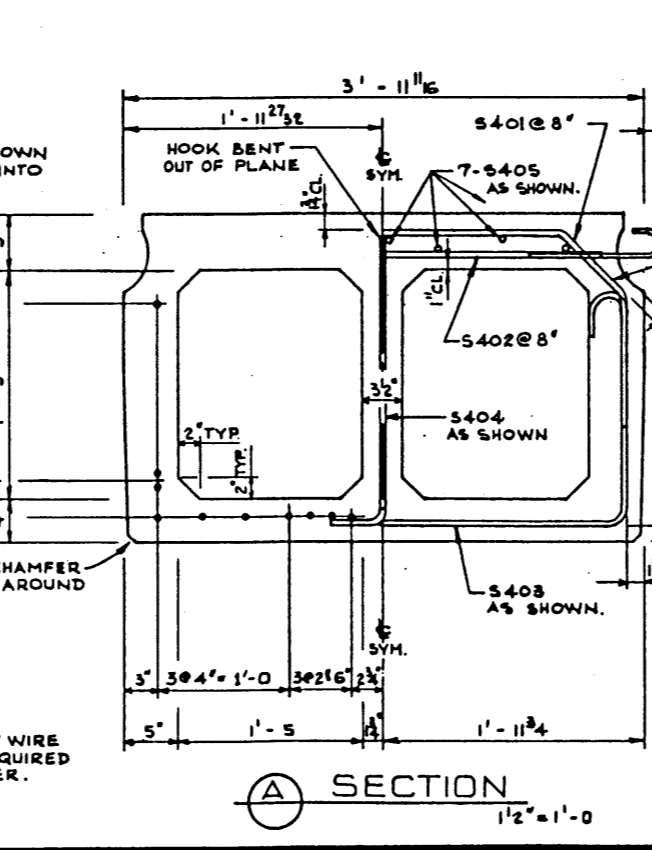
GIRDER FINISHES

NO.	DATE	DESCRIPTION	BY
1		5404 SPACING, 5405 LENGTH.	P.K.S.
REVISIONS			
DESIGNED	DRAWN BY	DATE	CHECKED BY
R. G. B.	V. G. B.	SEPT. 1974	
APPROVED		DATE	
<i>[Signature]</i>		JAN 8 1978	
CHIEF BRIDGE ENGINEER	DATE	STREAM	LOCATION
MIN. NO.	SCALE	FILE NO.	SHEET
	SHOWN		5-1229

ELEVATION
34' = 1'-0"



SECTION
1 1/2" = 1'-0"



NOTE:
20 - 1/2" 7 WIRE STRAND, REQUIRED PER GIRDER.