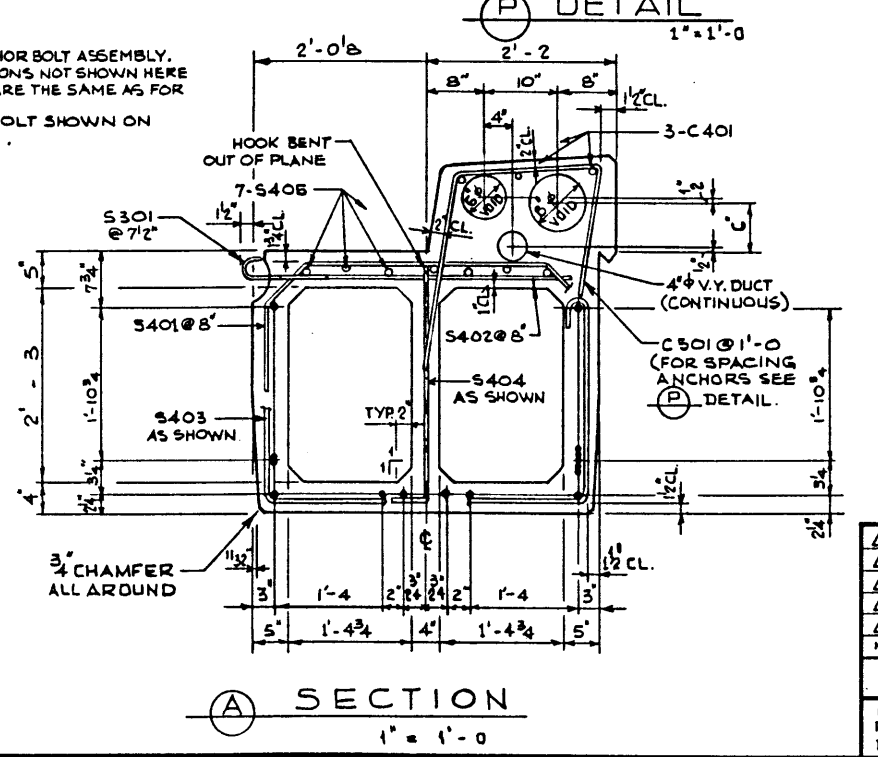
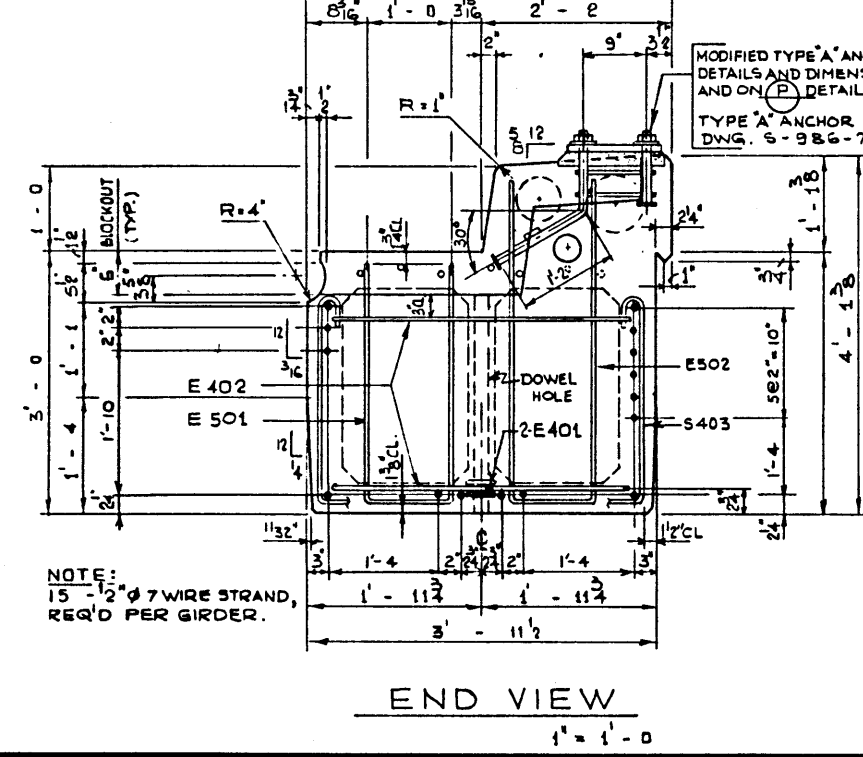
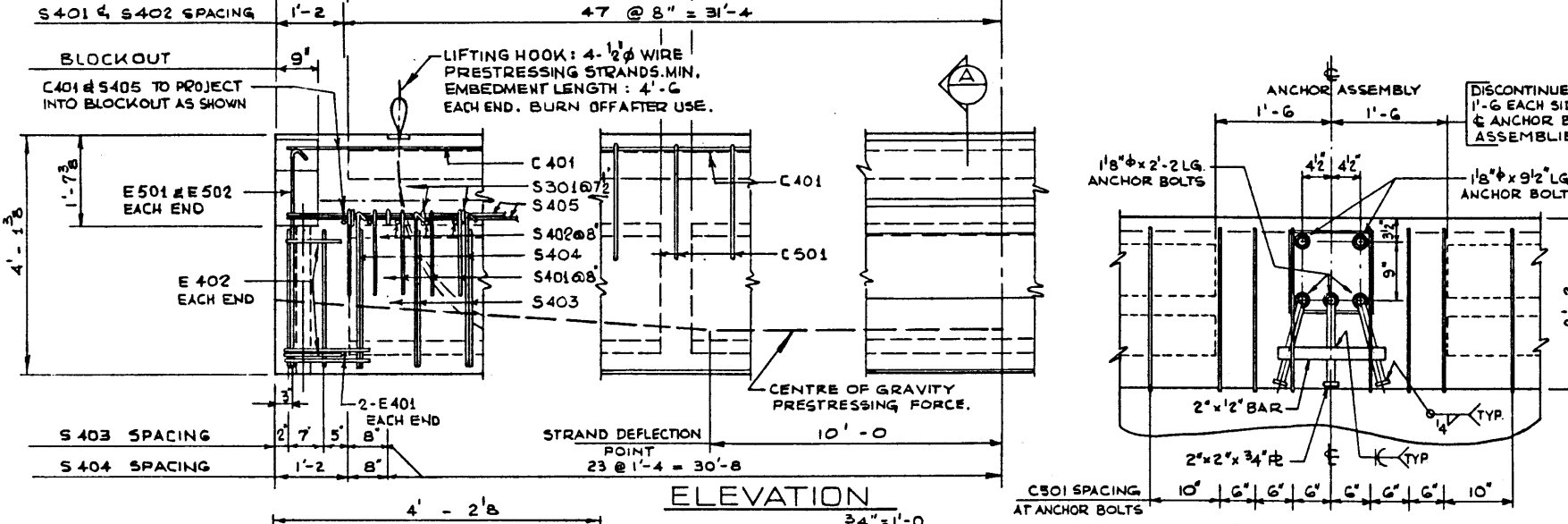


| BAR LIST: FOR UNSKEWED GIRDER | | | | | | | | | |
|-------------------------------|------|-----|------|----------|---|--------|--------------------|--|------------------|
| MARK | SIZE | NO. | TYPE | X | Y | LENGTH | WEIGHT | | |
| S 301 | 3 | 102 | A | | | 1'-5 | 54 | | |
| S 401 | 4 | 95 | B | | | 6'-2 | 391 | | |
| S 402 | 4 | 95 | STR | | | 3'-4 | 212 | | |
| S 403 | 4 | 53 | C | | | 9'-3 | 327 | | |
| S 404 | 4 | 49 | D | | | 2'-6 | 115 | | |
| S 405 | 4 | 14 | STR | | | 32'-10 | 307 | | |
| E 401 | 4 | 4 | F | | | 3'-4 | 9 | | |
| E 402 | 4 | 4 | G | | | 5'-4 | 14 | | |
| E 501 | 5 | 2 | E | 2'-8 1/2 | | 7'-4 | 15 | | |
| E 502 | 5 | 2 | E | 3'-8 | | 9'-3 | 19 | | |
| C 401 | 4 | 6 | STR | | | 32'-10 | 132 | | |
| C 501 | 5 | 82 | H | | | 5'-4 | 456 | | |
| | | | | | | | * ASSUMED 7 POSTS. | | TOTAL LBS.: 2051 |



GENERAL NOTES

DESIGN:

- A.A.S.H.O. 1973 SPECIFICATION EXCEPT AS MODIFIED BELOW.
- ALLOWABLE TENSION AT 80% MODULUS OF RUPTURE.
- NO TENSION IN DECK SURFACE.
- WEB REINFORCEMENT - ACCORDING TO A.C.I. 318-71 BUT NOT LESS THAN A.A.S.H.O. MINIMUM.
- LOADING LIVE LOAD - A.A.S.H.O. HS-25-44 0.70 WHEEL LINE PER GIRDER
- DEAD LOAD - GIRDER = 1.05 KIPS/FT. WEARING SURFACE = 0.10 KIPS/FT.

MATERIALS:

- CONCRETE IN GIRDER SHALL BE MADE OF LIGHTWEIGHT COARSE AGGREGATE AND SAND FINES.
- CONCRETE IN CURB SHALL BE MADE OF STANDARD WEIGHT AGGREGATES.
- CONCRETE 28 DAY STRENGTH 5,000 PSI.
- RELEASE STRENGTH 4,000 PSI.
- UNIT WEIGHT OF SEMI-LIGHTWEIGHT CONCRETE 120 LB./CU. FT.
- PRESTRESSING STEEL SHALL BE 1/2" DIAMETER - 7 WIRE 270 K STRAND.

FABRICATION:

- GIRDERS SHALL CONFORM TO THE REQUIREMENTS OF THE ALBERTA BRIDGE BRANCH SPECIFICATION FOR THE MANUFACTURE OF PRESTRESSED CONCRETE BRIDGE UNITS.
- FORCE IN PRESTRESSING STEEL:
INITIAL TENSIONING LOAD = 28.73 K/STRAND
DESIGN LOAD AFTER LOSSES = 22.82 K/STRAND
- CURB TO BE CAST MONOLITHICALLY WITH GIRDER.
- ANCHOR BOLT ASSEMBLIES SHALL BE CAST IN GIRDER AT SPACINGS AS REQUIRED.

ERECTION:

- LIFTING FORCE AT EACH HOOK SHALL NOT EXCEED 35° FROM THE VERTICAL. GIRDER SURFACE MUST BE LEVEL AT ALL TIMES.
- CALCULATED WEIGHT OF ONE GIRDER IS 62,930 LBS.

APPROVED

Alberta HIGHWAYS AND TRANSPORT BRIDGE BRANCH

65 FT. TYPE RD-36 CURB GIRDER SEMI-LIGHTWT. CONCRETE

DESIGNED: R.G.G. D.K.D. DRAWN BY: P.SZ. DATE: MAY 76 CHECKED BY: DATE: STREAM: LOCATION: HWY. NO. SCALE: FILE NO. SHEET: S-1238