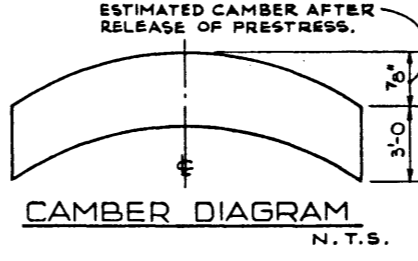
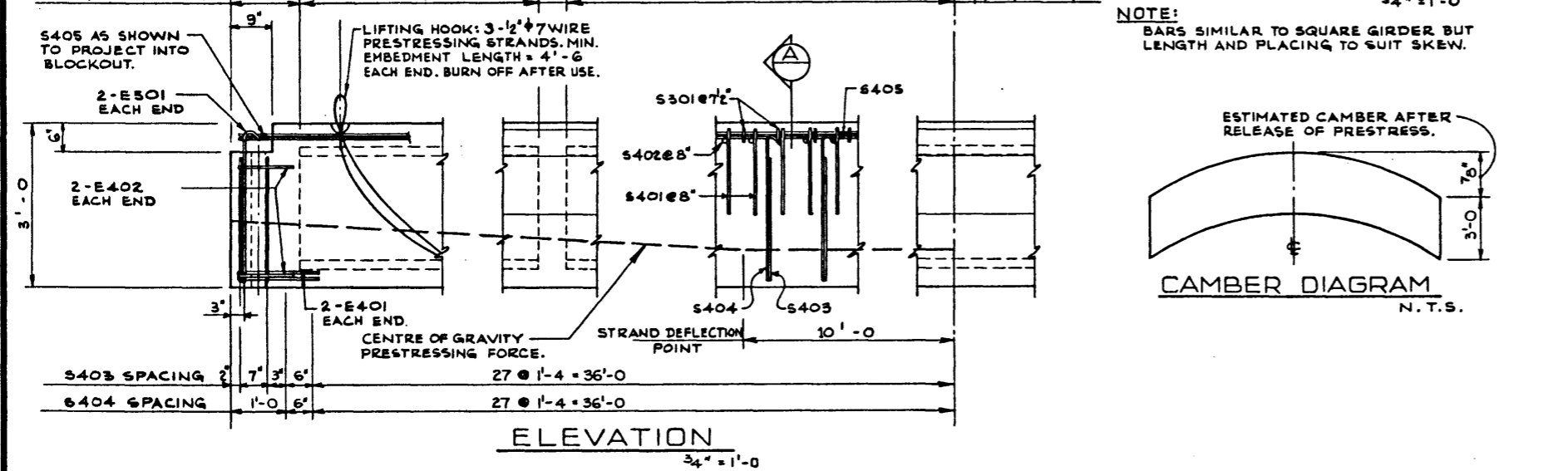


BAR LIST: FOR UNSKEWED GIRDER							
MARK	SIZE	NO.	TYPE	X	Y	LENGTH	WEIGHT
S 301	3	236	A			1'-5	123
S 401	4	111	B			6'-2	457
S 402	4	111	STR.			3'-4	247
S 403	4	61	C			9'-3	377
S 404	4	57	D			3'-6	133
S 405	4	14	STR.			37'-10	354
E 501	5	4	E			7'-4	31
E 401	4	4	F			3'-4	9
E 402	4	4	G			5'-4	14
TOTAL LBS: 1,745							



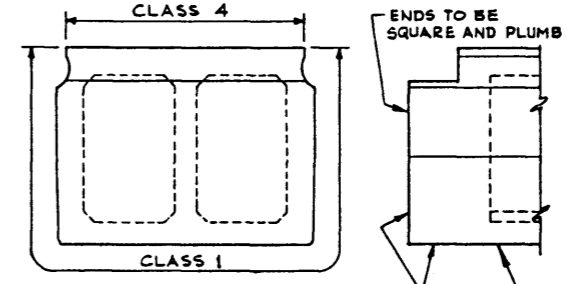
GENERAL NOTES

- DESIGN:
- A.A.S.H.O. 1973 SPECIFICATION EXCEPT AS MODIFIED BELOW.
 - ALLOWABLE TENSION AT 80% MODULUS OF RUPTURE.
 - NO TENSION IN DECK SURFACE.
 - WEB REINFORCEMENT - ACCORDING TO A.C.I. 318-71 BUT NOT LESS THAN A.A.S.H.O. MINIMUM.
- LOADING LIVE LOAD - A.A.S.H.O. HS-25-44
 0.70 WHEEL LINE PER GIRDER
 DEAD LOAD - GIRDER = 0.73 KIPS/FT.
 WEARING SURFACE = 0.10 KIPS/FT.

- MATERIALS:
- CONCRETE IN GIRDER SHALL BE MADE OF LIGHTWEIGHT COARSE AGGREGATE AND SAND FINES.
 - CONCRETE 28 DAY STRENGTH 5,000 PSI.
 - RELEASE STRENGTH 4,000 PSI.
 - UNIT WEIGHT OF SEMI-LIGHTWEIGHT CONCRETE 120 LB./CU. FT.
 - PRESTRESSING STEEL SHALL BE 1/2" DIAMETER - 7 WIRE 270 K STRAND

- FABRICATION:
- GIRDERS SHALL CONFORM TO THE REQUIREMENTS OF THE ALBERTA BRIDGE BRANCH SPECIFICATION FOR THE MANUFACTURE OF PRESTRESSED CONCRETE BRIDGE UNITS.
 - FORCE IN PRESTRESSING STEEL:
 INITIAL TENSIONING LOAD = 28.75 K/STRAND
 DESIGN LOAD AFTER LOSSES = 20.31 K/STRAND

- ERECTION:
- LIFTING FORCE AT EACH HOOK SHALL NOT EXCEED 35° FROM THE VERTICAL. GIRDER SURFACE MUST BE LEVEL AT ALL TIMES.
 - CALCULATED WEIGHT OF ONE GIRDER IS 54,200 LBS.



FABRICATOR'S NAME, YEAR OF MANUFACTURE, SERIAL NUMBER OF UNIT AND "HS-25" TO BE CAST INTO BOTTOM OF SLAB IN 2" LETTERS.

GIRDER FINISHES

DESIGNED R.G.Q. D.K.D.				DRAWN BY V.G.B.		DATE JAN. 78		CHECKED BY		DATE		APPROVED													
<table border="1"> <thead> <tr> <th>NO.</th> <th>DATE</th> <th>DESCRIPTION</th> <th>BY</th> <th>DATE</th> </tr> </thead> <tbody> <tr> <td colspan="5" style="text-align: center;">REVISIONS</td> </tr> </tbody> </table>												NO.	DATE			DESCRIPTION	BY	DATE	REVISIONS					ONLY BRIDGE ENGINEER DATE	
NO.	DATE	DESCRIPTION	BY	DATE																					
REVISIONS																									
STREAM		LOCATION		HWY. NO.		SCALE SHOWN		FILE NO.		SHEET OF		DWC NO. S-1241													