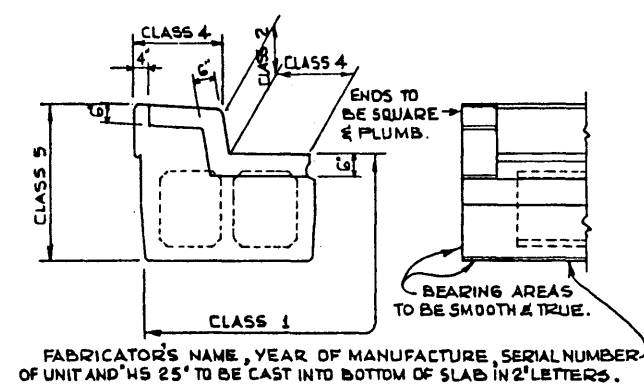
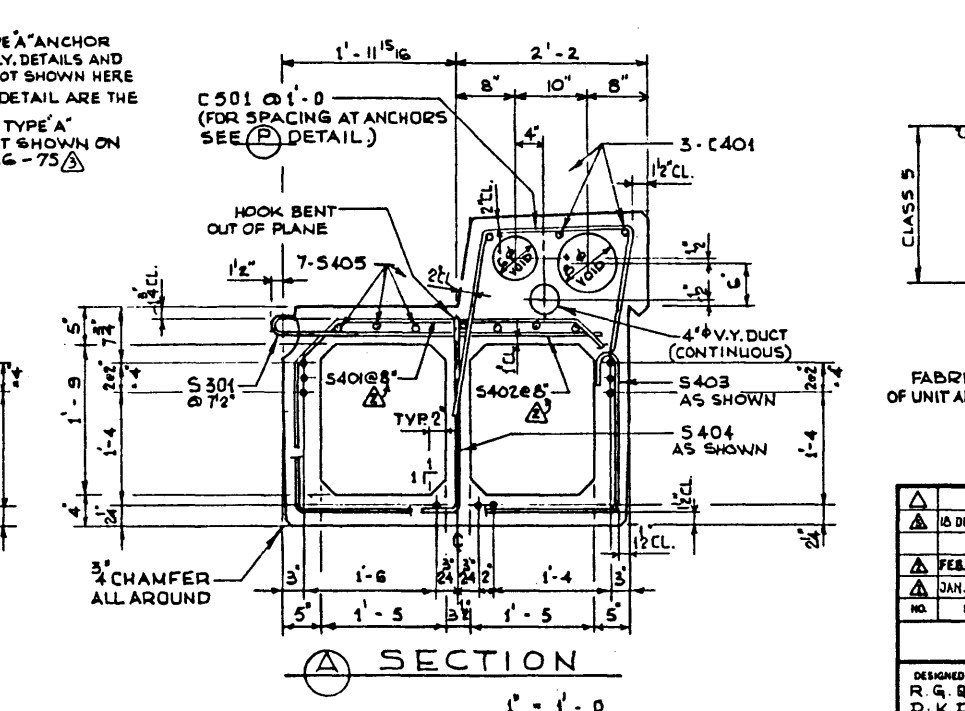
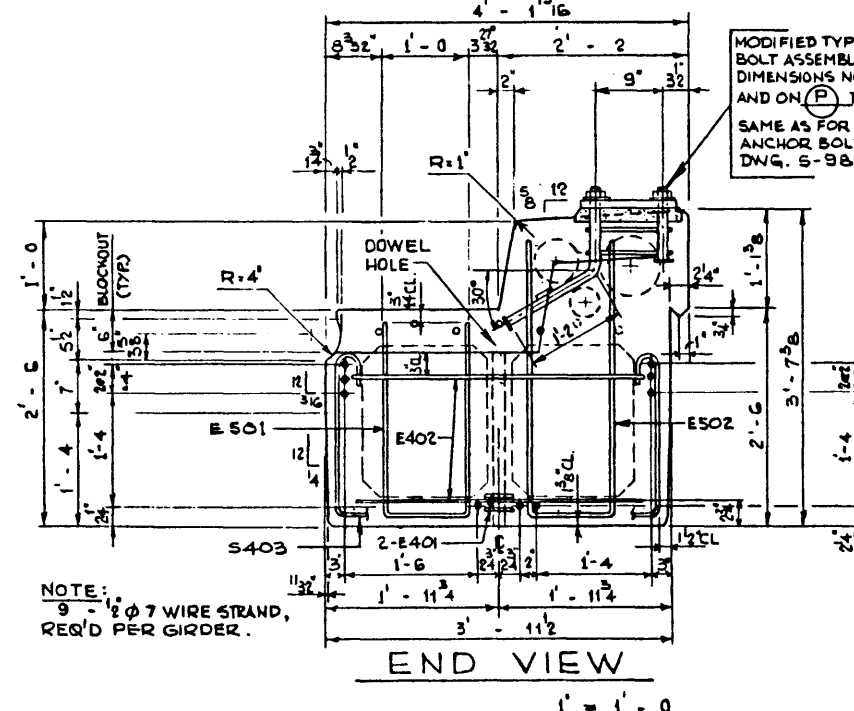
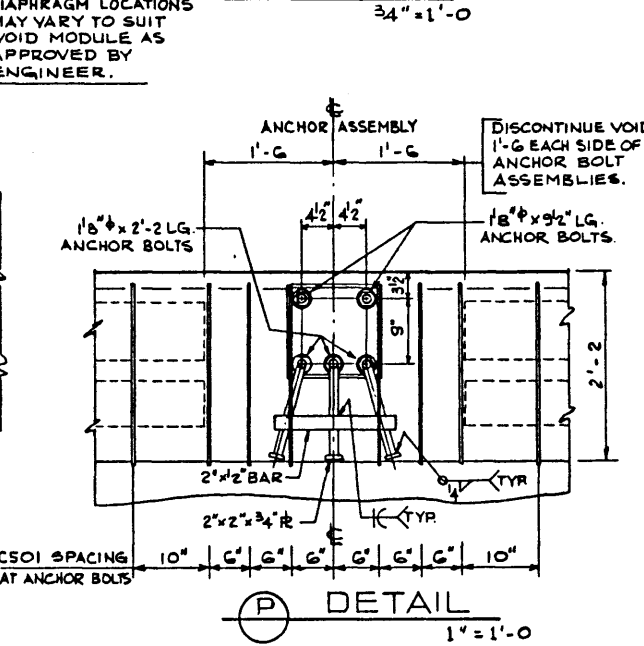
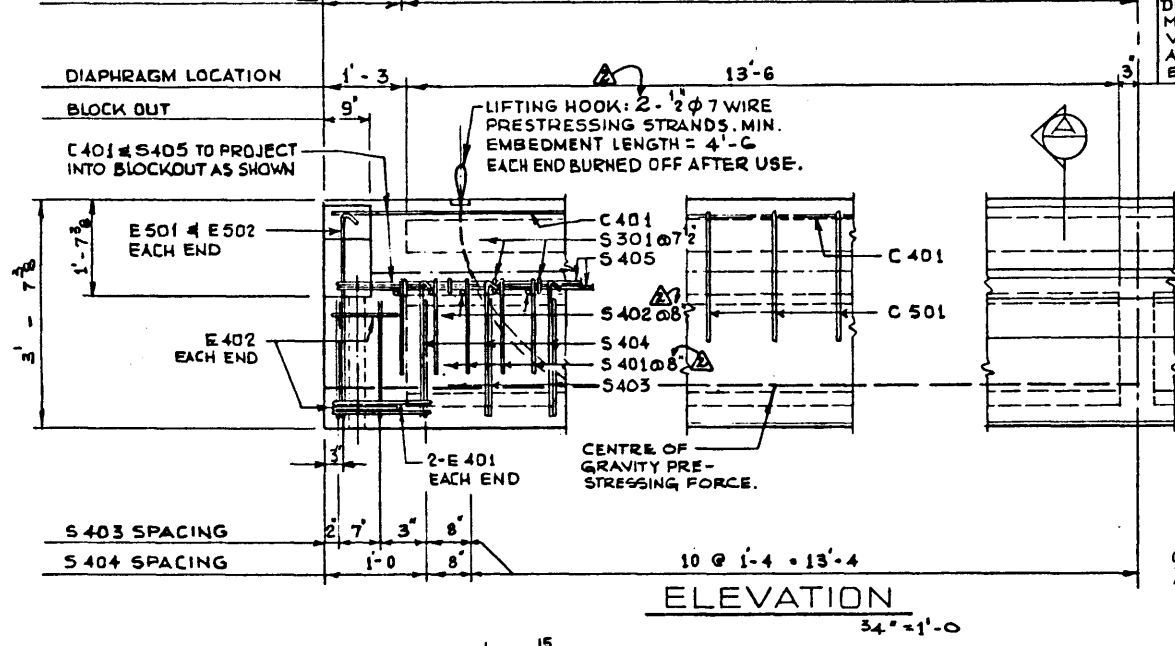


BAR LIST: FOR UNSKEWED GIRDER							
MARK	SIZE	NO.	TYPE	X	Y	LENGTH	WEIGHT
S 301	3	46	A			1 - 5	25
S 401	4	43	B			6 - 2	177
S 402	4	43	STR			3 - 4	96
S 403	4	27	C			8 - 3	149
S 404	4	23	D			3 - 0	44
S 405	4	7	STR			29 - 8	139
E 401	4	4	F			3 - 4	9
E 402	4	4	G			5 - 4	14
E 501	5	2	E	2'-2"		6 - 4	13
E 502	5	2	E	3'-2"		8 - 3	17
C 401	4	3	STR			29 - 8	59
C 501	5	36	H			5 - 4	200



FABRICATOR'S NAME, YEAR OF MANUFACTURE, SERIAL NUMBER OF UNIT AND 'HS 25' TO BE CAST INTO BOTTOM OF SLAB IN 2" LETTERS.

REVISIONS			
NO.	DATE	DESCRIPTION	BY
1	10 DEC. 1975	REF. DWG. S-986-74 TO-75, C501 SPACING CLARIFIED.	D.K.D.
2	FEB 18-75	S401 & S402 SPACING.	D.K.D.
3	JAN. 27. 1975	BAR LIST CHANGED.	R.W.L.

- * ASSUMED 3 POSTS. TOTAL LBS.: 942
- ### GENERAL NOTES
- DESIGN:
- A.A.S.H.O. 1973 SPECIFICATION EXCEPT AS MODIFIED BELOW.
 - ALLOWABLE TENSION AT 80% MODULUS OF RUPTURE.
 - NO TENSION IN DECK SURFACE.
 - WEB REINFORCEMENT - ACCORDING TO A.C.I. 318-71 BUT NOT LESS THAN A.A.S.H.O. MINIMUM.
 - LOADING LIVE LOAD - A.A.S.H.O. HS-25-44 0.70 WHEEL LINE PER GIRDER
 - DEAD LOAD - GIRDER = 0.96 KIPS/FT. WEARING SURFACE = 0.10 KIPS/FT.
- MATERIALS:
- CONCRETE IN GIRDER SHALL BE MADE OF LIGHTWEIGHT COARSE AGGREGATE AND SAND FINES.
 - CONCRETE IN CURB SHALL BE MADE OF STANDARD WEIGHT AGGREGATES.
 - CONCRETE 28 DAY STRENGTH 5000 PSI.
 - RELEASE STRENGTH 4000 PSI.
 - UNIT WEIGHT OF SEMI-LIGHTWEIGHT CONCRETE 120 LB./CU. FT.
 - PRESSURING STEEL SHALL BE 1/2" DIAMETER - 7 WIRE 270 K STRAND.
- FABRICATION:
- GIRDERS SHALL CONFORM TO THE REQUIREMENTS OF THE ALBERTA BRIDGE BRANCH SPECIFICATION FOR THE MANUFACTURE OF PRESTRESSED CONCRETE BRIDGE UNITS.
 - FORCE IN PRESTRESSING STEEL: INITIAL TENSIONING LOAD = 28.73 K/STRAND DESIGN LOAD AFTER LOSSES = 23.52 K/STRAND
 - CURB TO BE CAST MONOLITHICALLY WITH GIRDER.
 - ANCHOR BOLT ASSEMBLIES SHALL BE CAST IN GIRDER AT SPACINGS AS REQUIRED.
- ERECTION:
- LIFTING FORCE AT EACH HOOK SHALL NOT EXCEED 35° FROM THE VERTICAL. GIRDER SURFACE MUST BE LEVEL AT ALL TIMES.
 - CALCULATED WEIGHT OF ONE GIRDER IS 26940 LBS.

APPROVED		HIGHWAYS AND TRANSPORT BRIDGE BRANCH	
<i>[Signature]</i>		30 FT. TYPE RD-30 CURB GIRDER SEMI-LIGHTWT. CONCRETE	
DESIGNED	DRAWN BY	DATE	CHECKED BY
R.G.R.	P.SZ.	SEPT. 1974.	
D.K.D.			