

BAR LIST: FOR UNSKEWED GIRDER

MARK	SIZE	NO.	TYPE	X	Y	LENGTH	WEIGHT
S 301	3	53	A			1'-5"	28
S 401	4	49	B			6'-2"	202
S 402	4	49	STR			3'-4"	109
S 403	4	29	C			8'-3"	160
S 404	4	25	D			3'-0"	80
B 405	4	7	STR			34'-8"	162
E 401	4	4	F			3'-4"	9
E 402	4	4	G			5'-4"	14
E 501	5	2	E	2'-2"		6'-4"	13
E 502	5	2	E	3'-2"		8'-3"	17
C 401	4	3	STR			34'-8"	70
C 501	5	44	H			5'-4"	245

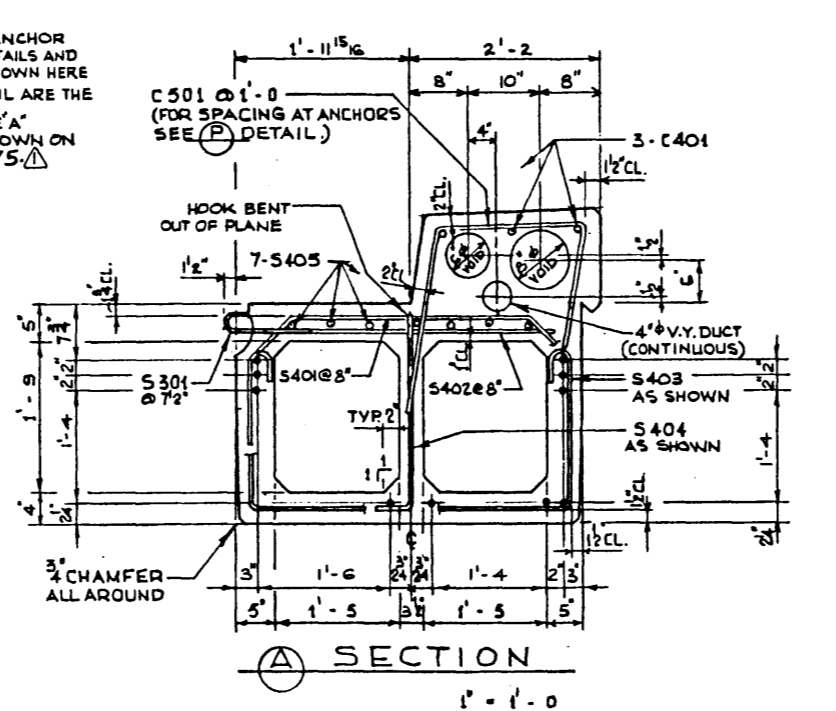
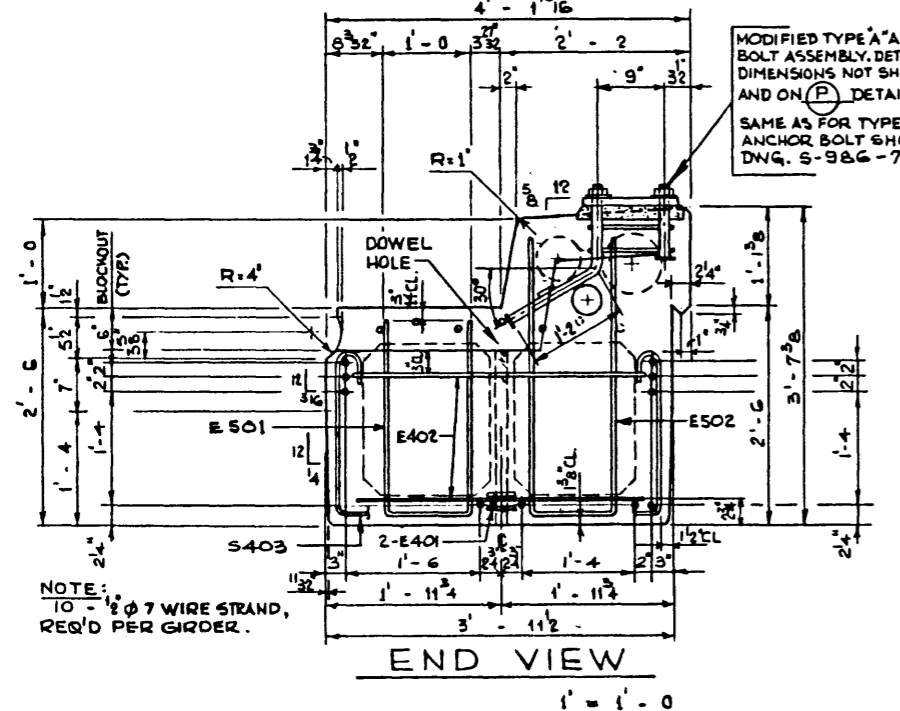
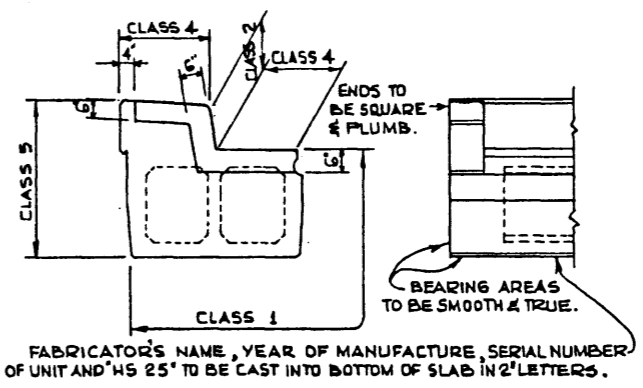
* ASSUMED 4 POSTS. TOTAL LBS.: 1090
 1079

GENERAL NOTES

- DESIGN:**
- A.A.S.H.O. 1973 SPECIFICATION EXCEPT AS MODIFIED BELOW.
 - ALLOWABLE TENSION AT 80% MODULUS OF RUPTURE.
 - NO TENSION IN DECK SURFACE.
 - WEB REINFORCEMENT - ACCORDING TO A.C.I. 318-71 BUT NOT LESS THAN A.A.S.H.O. MINIMUM.
 - LOADING LIVE LOAD - A.A.S.H.O. HS-25-44
 0.70 WHEEL LINE PER GIRDER
 DEAD LOAD - GIRDER = 0.96 KPS/FT.
 WEARING SURFACE = 0.10 KPS/FT.

- MATERIALS:**
- CONCRETE IN GIRDER SHALL BE MADE OF LIGHTWEIGHT COARSE AGGREGATE AND SAND FINES.
 - CONCRETE IN CURB SHALL BE MADE OF STANDARD WEIGHT AGGREGATES.
 - CONCRETE 28 DAY STRENGTH 5000 PSI.
 - RELEASE STRENGTH 4000 PSI.
 - UNIT WEIGHT OF SEMI-LIGHTWEIGHT CONCRETE 120 LB./CU. FT.
 - PRESSURING STEEL SHALL BE 1/2" DIAMETER - 7 WIRE 270 K STRAND.
- FABRICATION:**
- GIRDERS SHALL CONFORM TO THE REQUIREMENTS OF THE ALBERTA BRIDGE BRANCH SPECIFICATION FOR THE MANUFACTURE OF PRESTRESSED CONCRETE BRIDGE UNITS.
 - FORCE IN PRESSURING STEEL:
 INITIAL TENSIONING LOAD = 28.73 K/STRAND
 DESIGN LOAD AFTER LOSSES = 23.60 K/STRAND
 - CURB TO BE CAST MONOLITHICALLY WITH GIRDER.
 - ANCHOR BOLT ASSEMBLIES SHALL BE CAST IN GIRDER AT SPACINGS AS REQUIRED.

- ERECTION:**
- LIFTING FORCE AT EACH HOOK SHALL NOT EXCEED 35° FROM THE VERTICAL. GIRDER SURFACE MUST BE LEVEL AT ALL TIMES.
 - CALCULATED WEIGHT OF ONE GIRDER IS 30,500 LBS.



APPROVED <i>Riforey</i> CHIEF BRIDGE ENGINEER		Albera HIGHWAYS AND TRANSPORT BRIDGE BRANCH	
18 DEC 75 REF. DWG. S-986-74 TO -75, D.K.D. C501 SPACING CLARIFIED.		35 FT. TYPE RD-30 CURB GIRDER SEMI-LIGHTWT. CONCRETE	
NO. DATE DESCRIPTION BY		DATE JAN 8 1976	
REVISIONS			
DESIGNED R. G. R. D. K. D.	DRAWN BY M.W.S.	DATE JULY 75	DWG. NO. S-1260