

BAR LIST: FOR UNSKEWED GIRDER

MARK	SIZE	NO.	TYPE	X	Y	LENGTH	WEIGHT
S 301	3	108	A			1'-5"	58
S 401	4	49	B			6'-2"	202
S 402	4	49	STR.			3'-4"	109
S 403	4	29	C			9'-3"	179
S 404	4	25	D			3'-6"	58
S 405	4	8	STR.			34'-8"	185
E 501	5	4	E			7'-4"	31
E 401	4	4	F			3'-4"	9
E 402	4	4	G			5'-4"	14
TOTAL LBS:							845

NOTE:
 BARS SIMILAR TO SQUARE GIRDER BUT LENGTH AND PLACING TO SUIT SKEW.

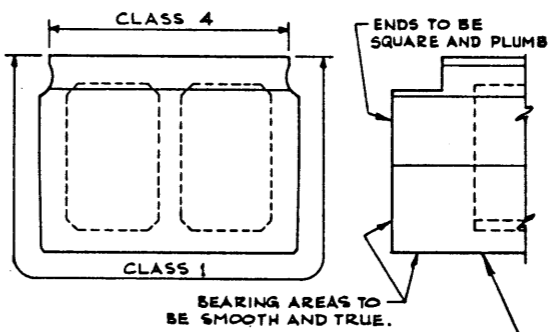
GENERAL NOTES

- DESIGN:**
- A.A.S.H.O. 1973 SPECIFICATION EXCEPT AS MODIFIED BELOW.
 - ALLOWABLE TENSION AT 80% MODULUS OF RUPTURE.
 - NO TENSION IN DECK SURFACE.
 - WEB REINFORCEMENT - ACCORDING TO A.C.I. 318-71 BUT NOT LESS THAN A.A.S.H.O. MINIMUM.
 - LOADING LINE LOAD - A.A.S.H.O. HS-25-44
 0.70 WHEEL LINE PER GIRDER
 DEAD LOAD - GIRDER = 0.73 KIPS/FT.
 WEARING SURFACE = 0.10 KIPS/FT.

- MATERIALS:**
- CONCRETE IN GIRDER SHALL BE MADE OF LIGHTWEIGHT COARSE AGGREGATE AND SAND FINES.
 - CONCRETE 28 DAY STRENGTH 5,000 PSI.
 - RELEASE STRENGTH 4,000 PSI.
 - UNIT WEIGHT OF SEMI-LIGHTWEIGHT CONCRETE 120 LB./CU. FT.
 - PRESTRESSING STEEL SHALL BE 1/2" DIAMETER - 7 WIRE 270 K STRAND

- FABRICATION:**
- GIRDERS SHALL CONFORM TO THE REQUIREMENTS OF THE ALBERTA BRIDGE BRANCH SPECIFICATION FOR THE MANUFACTURE OF PRESTRESSED CONCRETE BRIDGE UNITS.
 - FORCE IN PRESTRESSING STEEL:
 INITIAL TENSIONING LOAD = 28.73 K/STRAND
 DESIGN LOAD AFTER LOSSES = 23.99 K/STRAND

- ERECTION:**
- LIFTING FORCE AT EACH HOOK SHALL NOT EXCEED 35° FROM THE VERTICAL. GIRDER SURFACE MUST BE LEVEL AT ALL TIMES.
 - CALCULATED WEIGHT OF ONE GIRDER IS 26,350 LBS.



FABRICATOR'S NAME, YEAR OF MANUFACTURE, SERIAL NUMBER OF UNIT AND 'HS-25' TO BE CAST INTO BOTTOM OF SLAB IN 2" LETTERS.

GIRDER FINISHES
 3/4" x 1'-0"

APPROVED				HIGHWAYS AND TRANSPORT BRIDGE BRANCH			
35 FT. TYPE RD-36 INTERIOR GIRDER SEMI-LIGHTWT. CONCRETE				Dwg. No. 5-1261			
NO.	DATE	DESCRIPTION	BY	DATE	STREAM	LOCATION	HWY. NO.
REVISIONS							
DESIGNED	DRAWN BY	DATE	CHECKED BY	DATE	STREAM	LOCATION	HWY. NO.
R.G.Q.	V.G.B.	APR. 77					
A.C.K.							
SCALE SHOWN							SHEET 5-1261

NOTE:
 8 - 1/2" x 7 WIRE STRAND, REQUIRED PER GIRDER.