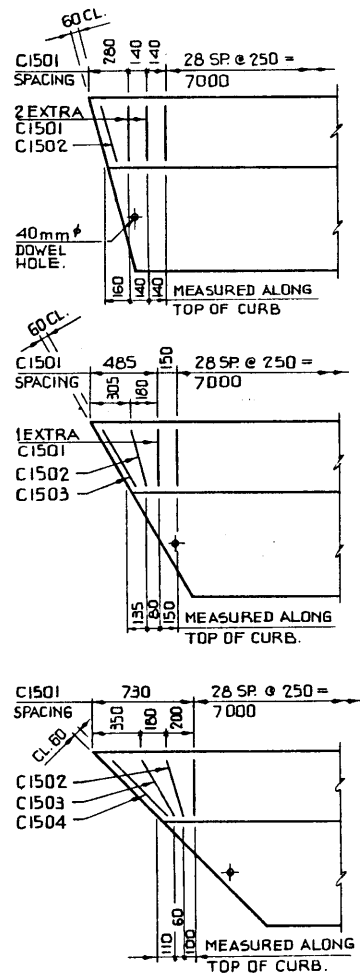
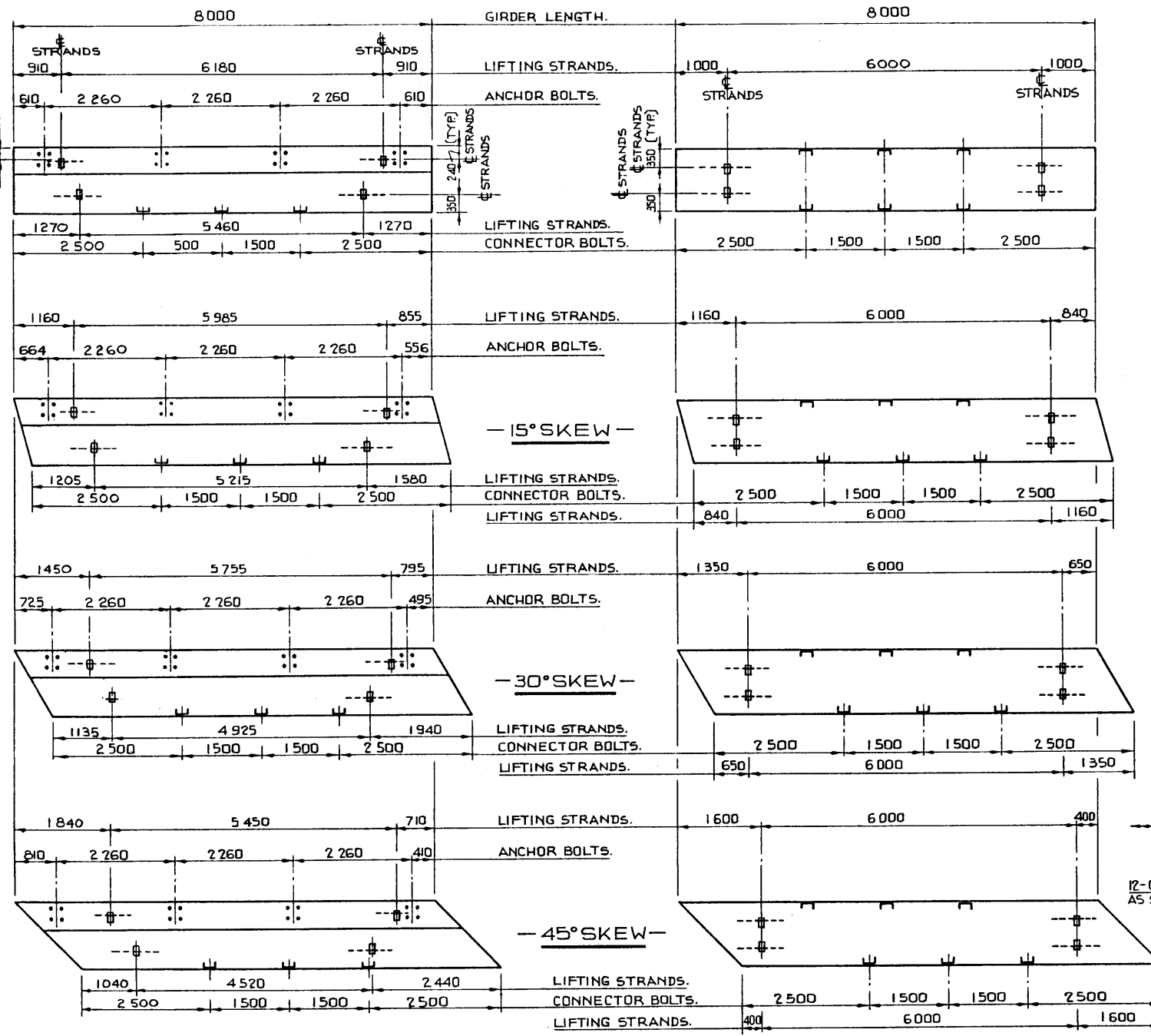


**NOTE:**

- SHIFT REINFORCING BARS TO CLEAR ANCHOR BOLTS ASSEMBLY IF REQUIRED.
- SHIFT CURB BARS TO MISS LIFTING HOOK POCKETS WHERE REQUIRED.



**CURB RE-BAR**  
1:25



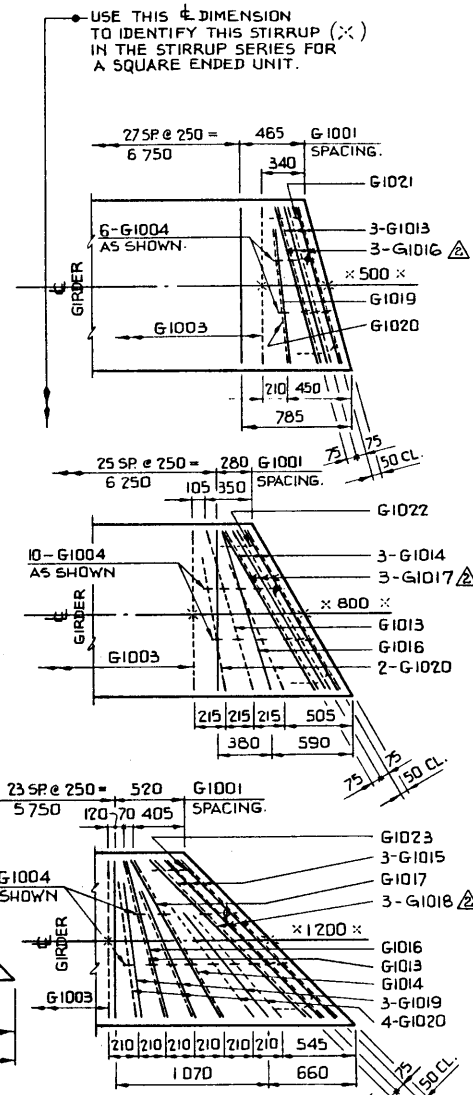
**CURB GIRDER**  
1:50

**INTERIOR GIRDER**  
1:50

**GIRDER RE-BAR**  
1:25

**NOTE:**

- SHIFT SLAB BARS TO MISS LIFTING HOOK POCKETS WHERE REQUIRED.
- SLAB BARS NOT DIMENSIONED ARE TIGHT AGAINST ADJACENT STIRRUP.

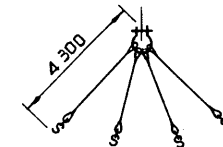
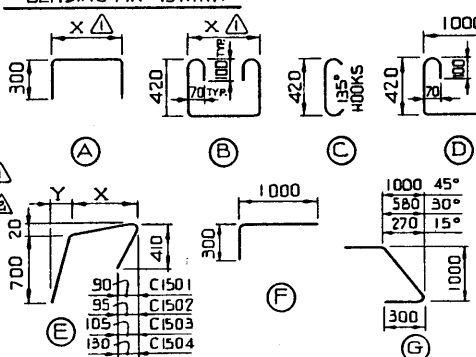


USE THIS  $\phi$  DIMENSION TO IDENTIFY THIS STIRRUP ( $\times$ ) IN THE STIRRUP SERIES FOR A SQUARE ENDED UNIT.

MARK	SIZE	TYPE	X	Y	LENGT	15°SKEW		30°SKEW		45°SKEW					
						INTERIOR	CURB	INTERIOR	CURB	INTERIOR	CURB				
						NO. MASS	NO. MASS	NO. MASS	NO. MASS	NO. MASS	NO. MASS				
C1501	15	E	380	80	1455	—	—	4	9	—	—				
C1502	15	E	390	85	1465	—	—	2	5	—	—				
C1503	15	E	440	95	1515	—	—	—	—	2	5				
C1504	15	E	535	115	1625	—	—	—	—	—	2	5			
G1004	10	C	—	—	620	12	6	12	6	20	10	24	12	24	12
G1013	10	B	1165	—	2260	6	11	6	11	2	4	2	4	2	4
G1014	10	B	1300	—	2390	—	—	—	6	11	6	11	2	4	2
G1015	10	B	1590	—	2680	—	—	—	—	6	13	6	13	—	
G1016	10	A	1165	—	1765	6	8	6	8	2	3	2	3	2	3
G1017	10	A	1300	—	1908	—	—	—	6	9	6	9	2	3	2
G1018	10	A	1590	—	2190	—	—	—	—	6	10	6	10	—	
G1019	10	F	—	—	1280	2	2	2	2	—	—	6	6	6	6
G1020	10	D	—	—	1520	2	2	2	2	4	5	4	5	8	9
G1021	10	G	—	—	1585	2	2	2	2	—	—	—	—	—	—
G1022	10	G	—	—	1705	—	—	—	—	2	3	2	3	—	—
G1023	10	G	—	—	1965	—	—	—	—	—	—	2	3	2	3
<b>TOTAL kg</b>						26	40	39	54	60	75				

**BAR TYPES: N.T.S.**

(ALL BAR DIMENSIONS ARE OUT TO OUT)  
BENDING PIN 45mm  $\phi$



**LIFTING SLING**  
N.T.S.

**NOTE:**

- CALCULATED MAXIMUM LOAD IN EACH LEG OF SLING:
- CURB UNIT — 2.8 TONNES
- INTERIOR UNIT — 2.2

**NOTE:**

- SKEWS ARE SHOWN RIGHT HAND FORWARD.
- LEFT HAND SKEWS ARE OPPOSITE AS SHOWN.

DIMENSIONS ARE GIVEN IN mm

**SUPERSEDED**

WORK THIS DWG. IN CONJUNCTION WITH DWG. NO S-1304 & S-1305

DESIGNED R.W. L.		DRAWN BY M.M.F.		DATE 78 02 15		CHECKED BY		DATE		STREAM		LOCATION		HWY NO.		SCALE SHOWN		FILE NO.		SHEET OF		DWG. NO. S-1306	
APPROVED		APPROVED		APPROVED		APPROVED		APPROVED		APPROVED		APPROVED		APPROVED		APPROVED		APPROVED		APPROVED		APPROVED	
88-03-04		SUPERSEDED BY S-1306-08		DHQ		79-03-20		4-G1016, G1017 & G1018 ADDED		R.G.R.		78-10-12		X DIM. FOR TYPE (A) & (B) BAR		R.W.L.		DATE		MAY 23/78		CHIEF BRIDGE ENGINEER	