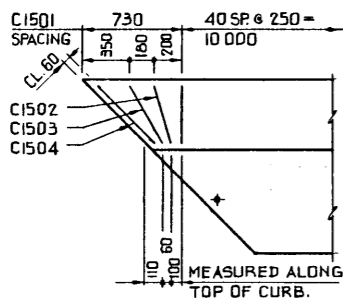
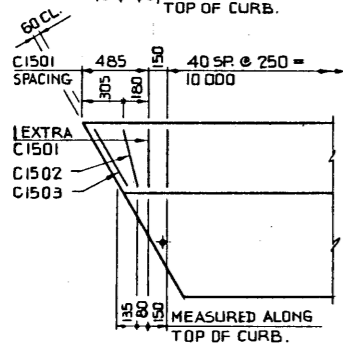
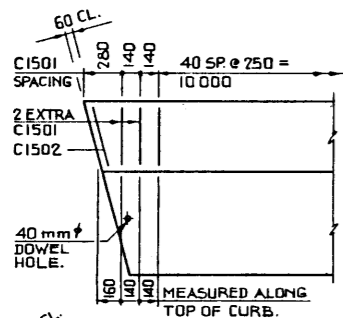


**NOTE:**

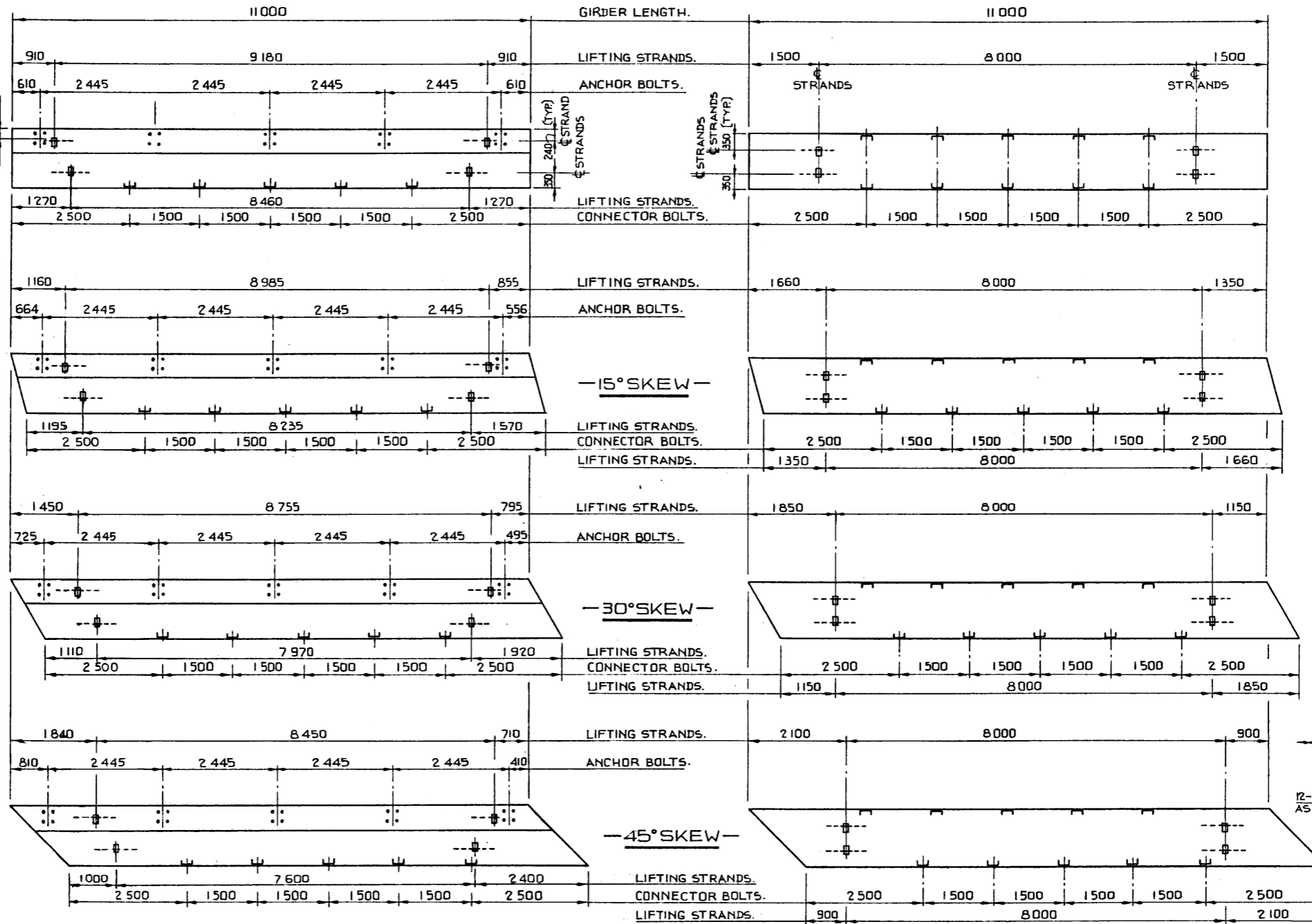
- SHIFT REINFORCING BARS TO CLEAR ANCHOR BOLTS ASSEMBLY IF REQUIRED.
- SHIFT CURB BARS TO MISS LIFTING HOOK POCKETS WHERE REQUIRED.

**NOTE:**

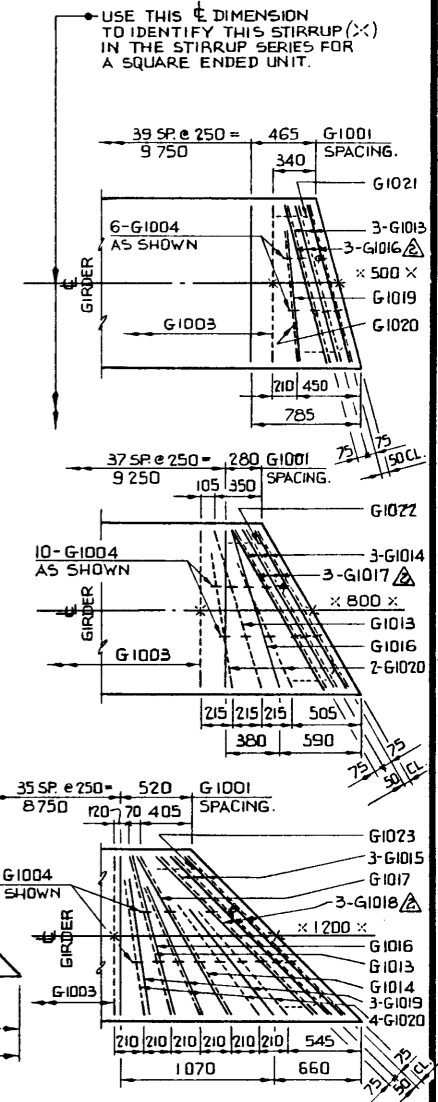
- SHIFT SLAB BARS TO MISS LIFTING HOOK POCKETS WHERE REQUIRED.
- SLAB BARS NOT DIMENSIONED ARE TIGHT AGAINST ADJACENT STIRRUP.



**CURB RE-BAR**  
1:25



**CURB GIRDER**  
1:50

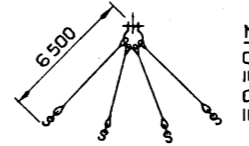
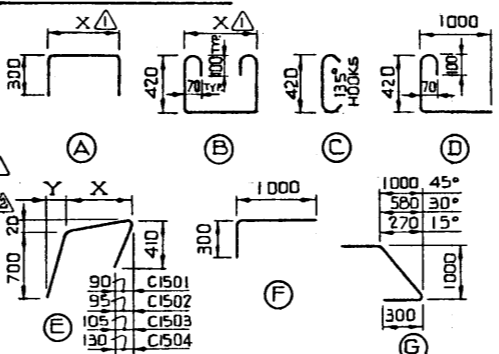


**GIRDER RE-BAR**  
1:25

**INTERIOR GIRDER**  
1:50

MARK	SIZE	TYPE	X	Y	LENGTH	15° SKEW		30° SKEW		45° SKEW							
						NO.	MASS	NO.	MASS	NO.	MASS						
						NO.	MASS	NO.	MASS	NO.	MASS						
C1501	15	E	380	80	1455	—	—	—	—	—	—						
C1502	15	E	390	85	1465	—	—	—	—	—	—						
C1503	15	E	440	95	1515	—	—	—	—	—	—						
C1504	15	E	535	115	1625	—	—	—	—	—	—						
G1004	10	C	—	—	620	12	6	12	6	20	10	20	10	24	12	24	12
G1013	10	B	1165	—	2260	6	11	6	11	2	4	2	4	2	4	2	4
G1014	10	B	1300	—	2390	—	—	—	—	6	11	6	11	2	4	2	4
G1015	10	B	1590	—	2680	—	—	—	—	—	—	—	6	13	6	13	—
G1016	10	A	1165	—	1765	6	8	6	8	2	3	2	3	2	3	2	3
G1017	10	A	1300	—	1900	—	—	—	—	6	9	6	9	2	3	2	3
G1018	10	A	1590	—	2190	—	—	—	—	—	—	—	6	10	6	10	—
G1019	10	F	—	—	1280	2	2	2	2	—	—	—	6	6	6	6	—
G1020	10	D	—	—	1520	2	2	2	2	4	5	4	5	8	9	8	9
G1021	10	G	—	—	1585	2	2	2	2	—	—	—	—	—	—	—	—
G1022	10	G	—	—	1705	—	—	—	—	2	3	2	3	—	—	—	—
G1023	10	G	—	—	1965	—	—	—	—	—	—	—	2	3	2	3	—
TOTAL kg						26	40	39	54	60	75						
						31	45	45	60	67	82						

**BAR TYPES: N.T.S.**  
(ALL BAR DIMENSIONS ARE OUT TO OUT)  
BENDING PIN 45mm φ



**LIFTING SLING**  
N.T.S.

**NOTE:**  
CALCULATED MAXIMUM LOAD IN EACH LEG OF SLING:  
CURB UNIT — 4.1 TONNES  
INTERIOR UNIT — 2.8 "

**NOTE:**  
• SKEWS ARE SHOWN RIGHT HAND FORWARD.  
• LEFT HAND SKEWS ARE OPPOSITE AS SHOWN.

DIMENSIONS ARE GIVEN IN mm

**SUPERSEDED**

WORK THIS DWG. IN CONJUNCTION WITH DWG. NO. S-1310 & S-1311

NO.	DATE	DESCRIPTION	TYPE	BY
88-03-04	—	SUPERSEDED BY S-1312-88	DMQ	—
79-03-20	—	4-G1016, G1017 & G1018 ADDED	R.G.Q.	—
78-10-12	—	X-DIM. FOR TYPE (A) & (B) BAR.	R.W.L.	—

APPROVED  
*[Signature]*  
CHIEF BRIDGE ENGINEER  
DATE: MAR 23 1988

Alberta TRANSPORTATION BRIDGE BRANCH METRIC

PRESTRESSED CONCRETE  
11m TYPE SM-510  
INT. & CURB GIRDER LAYOUTS

DESIGNED	DRAWN BY	DATE	CHECKED BY	DATE	STREAM	LOCATION	HWY. NO.	SCALE	FILE NO.	SHEET	DWG. NO.
R.W.L.	M.M.F.	78 02 15						SHOWN		OF	S-1312