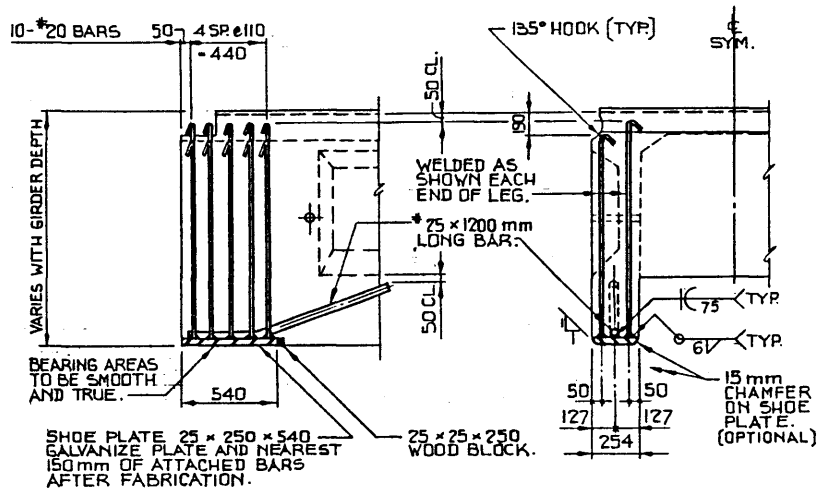
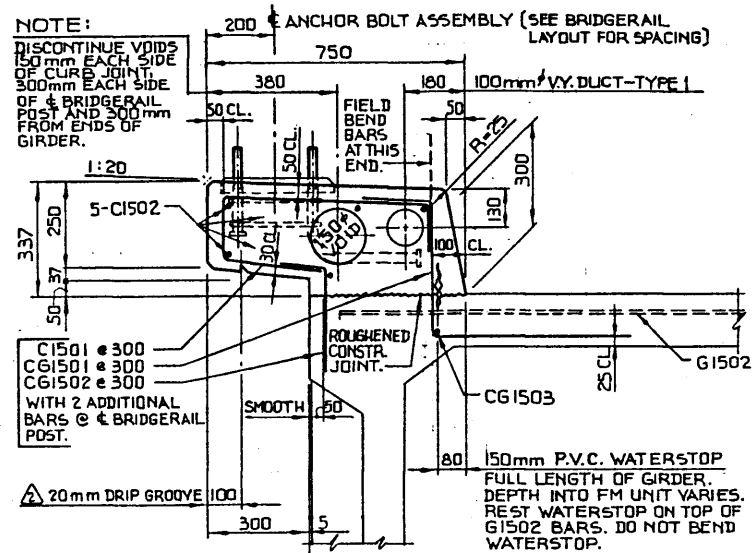


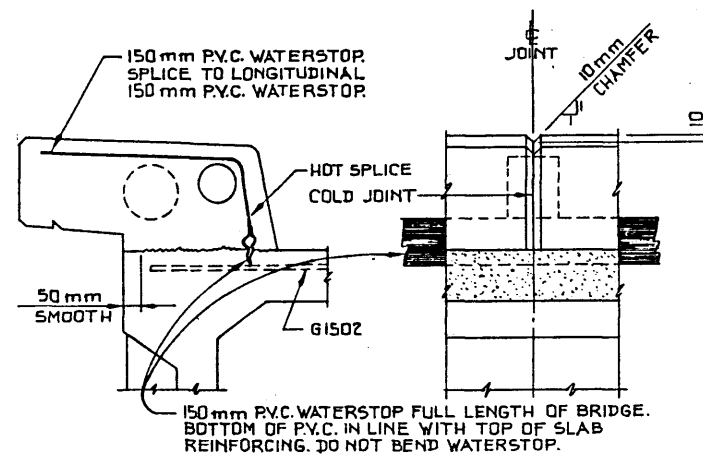
SECTION-END DIAPHRAGM
STANDARD APPLICABLE 1:10



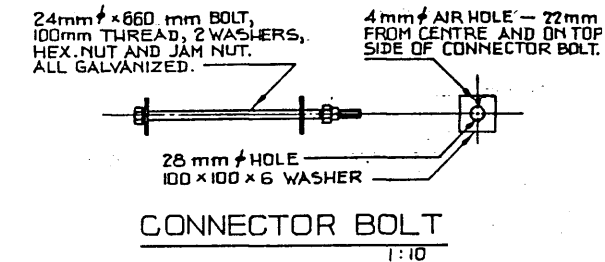
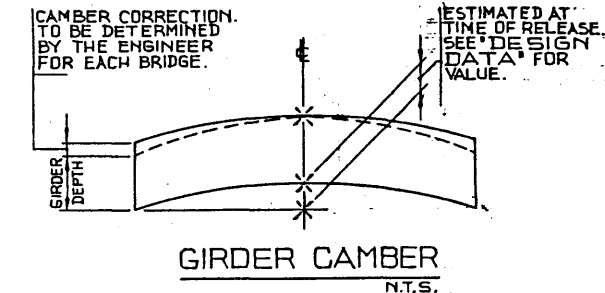
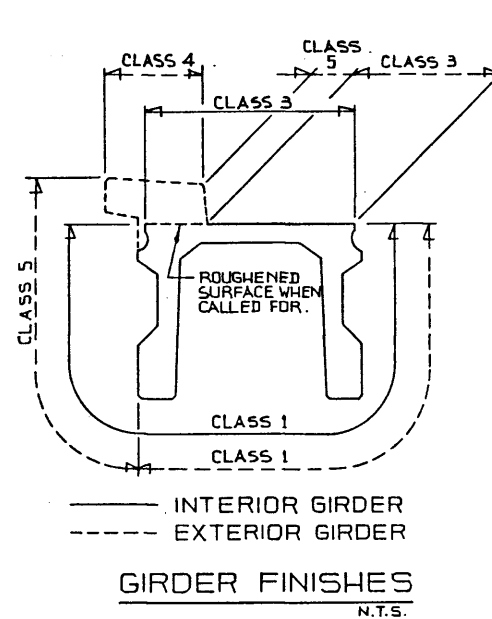
SHOE PLATE DETAIL
STANDARD APPLICABLE 1:20



CURB SECTION 1:10
(FOR EXTERIOR GIRDER ONLY)



TYPICAL CURB JOINT 1:10



GENERAL NOTES:

DESIGN:

- A.A.S.H.T.O. 1973 SPECIFICATION PLUS INTERIMS TO 1976 EXCEPT AS MODIFIED BELOW:
 - ALLOWABLE FINAL TENSION AT CENTRELINE 80% MODULUS OF RUPTURE.
 - NO TENSION IN DECK SURFACE.
 - WEB REINFORCEMENT—ACCORDING TO A.C.I. 318-71 BUT NOT LESS THAN A.A.S.H.T.O. MINIMUM.
 - CAPACITY REDUCTION FACTOR ACCORDING TO C.S.A. 56-1974.

MATERIALS:

- CONCRETE IN GIRDER SHALL BE MADE WITH LIGHTWEIGHT COARSE AGGREGATE AND NATURAL SAND FINES.
- UNIT WEIGHT OF SEMI-LIGHTWEIGHT CONCRETE 1920 kg/m³ PLUS OR MINUS 5% IN PLASTIC STATE.
- AIR ENTRAINMENT SHALL NOT BE LESS THAN 6%.
- PRESTRESSING STEEL SHALL BE 12.7 mm DIAMETER - 7 WIRE (f_s' = 1860 MPa) STRESS-RELIEVED OR LOW RELAXATION STRAND.

FABRICATION:

- GIRDERS SHALL CONFORM TO THE REQUIREMENTS OF THE ALBERTA BRIDGE BRANCH SPECIFICATION FOR THE MANUFACTURE OF PRESTRESSED AND PRECAST CONCRETE BRIDGE UNITS B-190 M-79 MAY.
- REINFORCEMENT: DIAMETERS OF ALL BENDS SHALL CONFORM TO THE RECOMMENDED MINIMUMS, AND ALL HOOKS, UNLESS OTHERWISE NOTED, SHALL CONFORM TO THE RECOMMENDED SIZES DETAILED IN THE A.C.I. MANUAL OF STANDARD PRACTICE FOR DETAILING REINFORCED CONCRETE STRUCTURES.
- GALVANIZING SHALL BE IN ACCORDANCE WITH A.S.T.M. SPECIFICATION A153.
- SHEAR KEYS AND BLOCKOUTS SHALL BE SANDBLAST ROUGHENED BY THE GIRDER FABRICATOR TO THE APPROVAL OF THE ENGINEER.
- RIBS AND CONNECTOR BOLT HOLES SHALL BE OMITTED ON OUTSIDE LEGS OF EXTERIOR GIRDERS.
- EXTERIOR GIRDER DIAPHRAGMS SHALL BE SPACED AT 3m MAXIMUM.
- CONNECTOR BOLTS, WASHERS, HEX. NUTS, JAM NUTS AND RODFOAM GASKETS SHALL BE SUPPLIED WITH THE GIRDERS.
- ALL EXPOSED CONCRETE CORNERS TO HAVE 15 mm CHAMFER OR FILLET UNLESS OTHERWISE NOTED.

ERECTION:

- LIFTING FORCE AT EACH HOOK MUST BE VERTICAL AT ALL TIMES.
- GIRDER SURFACE MUST BE LEVEL AT ALL TIMES.

DIMENSIONS ARE GIVEN IN mm

WORK THIS DWG. IN CONJUNCTION WITH APPLICABLE STANDARD DRAWING.				APPROVED		Alberta TRANSPORTATION BRIDGE BRANCH METRIC	
NO.	DATE	DESCRIPTION	BY	 J.C.Y. CHIEF BRIDGE ENGINEER		PRESTRESSED CONCRETE TYPE FM GIRDER STANDARD DETAILS	
81 09 18		NOTE	J.C.Y.				
78 06 21		DRIP GROOVE, NOTE, CURB JOINT.	J.A.S.				
78 09 20		STABILIZED TO LOW RELAXATION.	R.G.Q.	DATE: JAN. 23/78			
REVISIONS							
DESIGNED	DRAWN BY	DATE	CHECKED BY	DATE	STREAM	LOCATION	HWY. NO.
A.W.	M.M.F.	77 12 08	Robert	June 21/78			
						SCALE	FILE NO.
						SHOWN	2
						SHEET	2
						DWG. NO.	5-1399