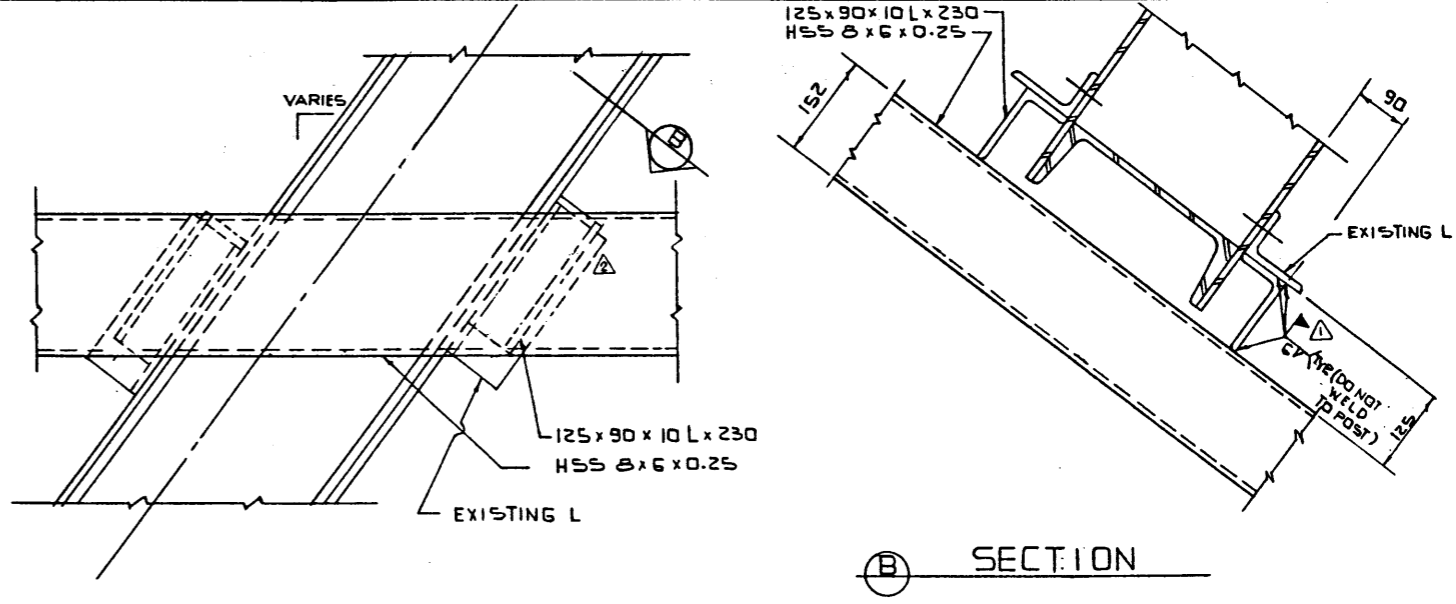
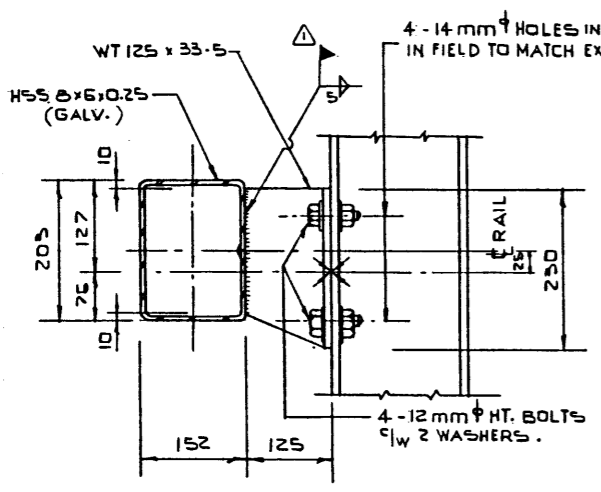


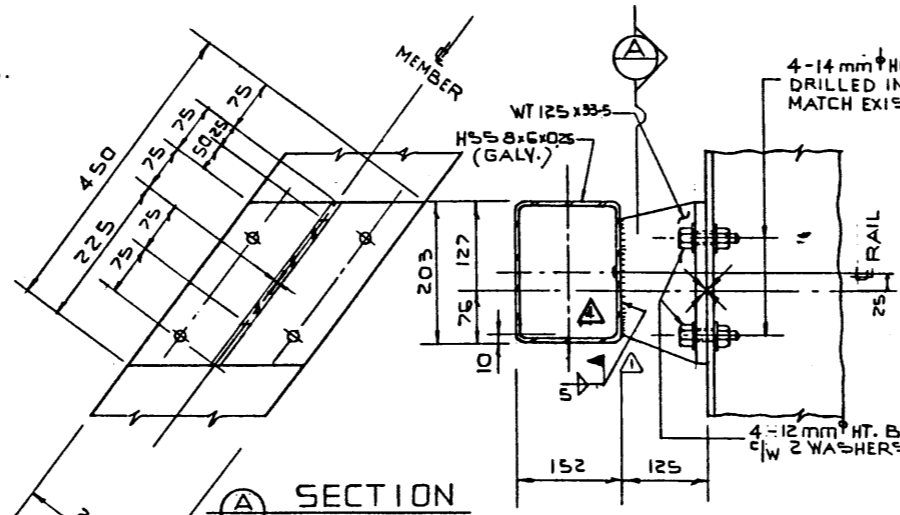
ELEVATION
N.T.S.



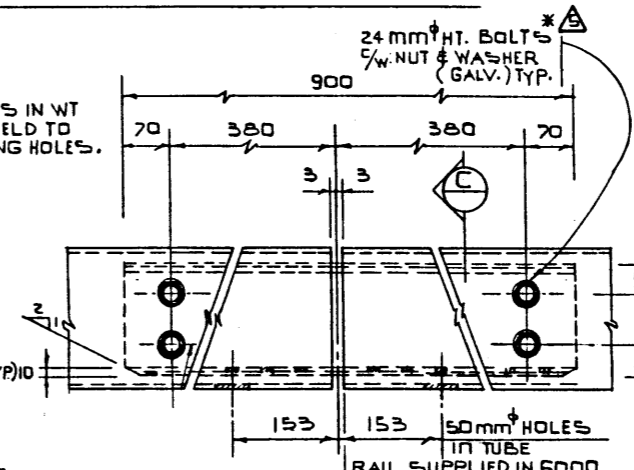
END POST ANGLES



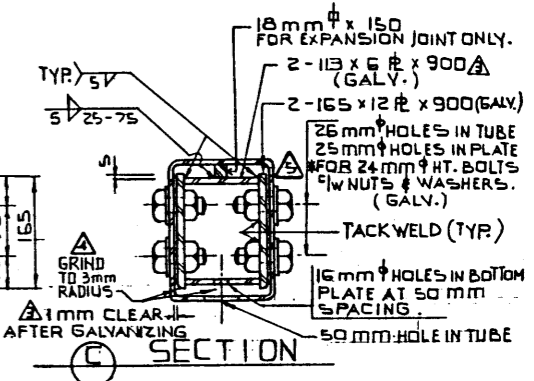
VERTICAL POST "T" BRACKET



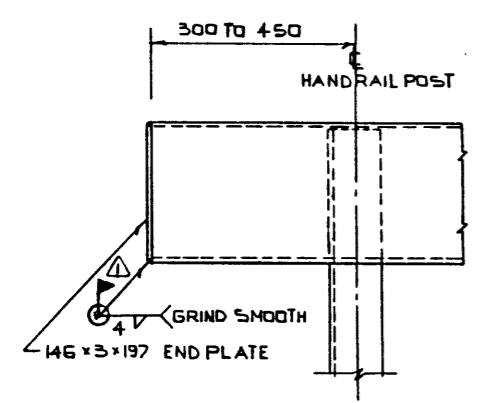
DIAGONAL "T" BRACKET



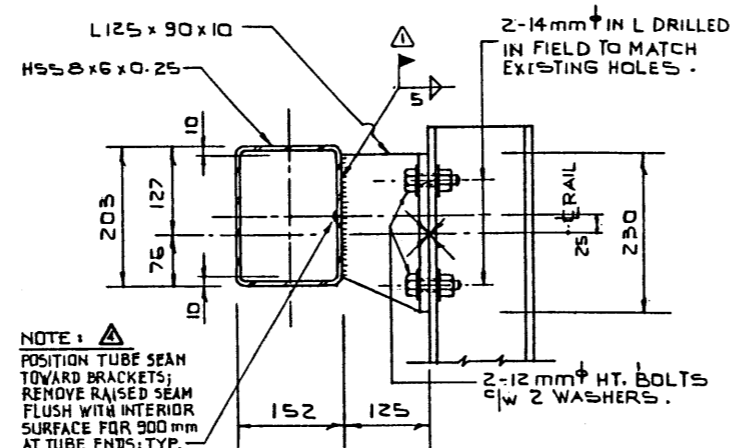
RAIL SPLICE



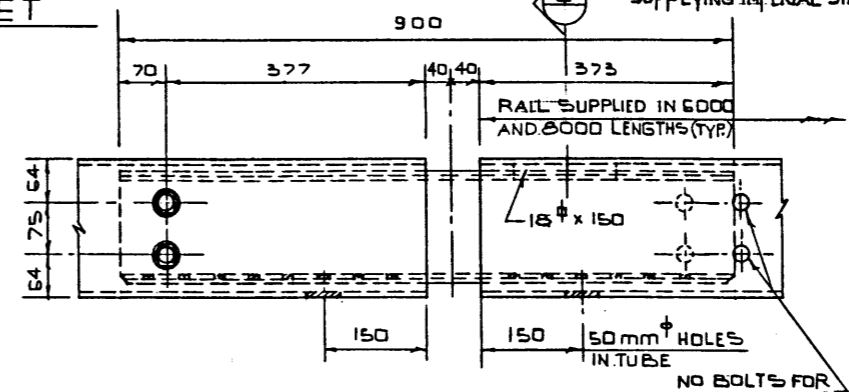
SECTION



RAIL END PLATE



HANDRAIL POST "L" BRACKET



EXPANSION JOINT

- GENERAL NOTES:**
- * DIMENSIONS ARE GIVEN IN MM.
 - * FABRICATION IS TO BE IN ACCORDANCE WITH BRIDGE BRANCH SPECIFICATION FOR THE SUPPLY OF BRIDGERAIL (B-312 M-78).
 - * ALL STEEL SHALL CONFORM TO C.S.A. G40-21 GRADE 44 W OR A.S.T.M. A36 EXCEPT STRUCTURAL TUBING TO CONFORM TO A.S.T.M. A500 B.
 - * RAILING, RAIL SPLICE PLATES AND SPLICE BOLTS SHALL BE HOT DIP GALVANIZED AFTER FABRICATION IN ACCORDANCE WITH THE REQUIREMENTS OF A.S.T.M. SPECIFICATIONS: A123 AND A153.
 - * MOUNTING BRACKETS SHALL BE SHOP PAINTED WITH ONE COAT OF PAINT CONFORMING TO C.G.S.B. SPECIFICATION GP-166 A TYPE III HAVING A DRY THICKNESS OF 0.04 TO 0.06 mm. NO PAINT 25 mm FROM THE FIELD WELDED EDGES.
 - * GALVANIZED SURFACES WHICH ARE FIELD WELDED SHALL RECEIVE TWO COATS OF GALVACON PAINT.
 - * RAILING TO BE FABRICATED WITH TUBE SEAM AT SIDE.
 - * ALL BRACKETS SHALL BE SUPPLIED COMPLETE WITH BOLTS AS SHOWN.
 - * EACH SECTION OF RAIL SHALL BE SUPPLIED WITH SPLICE PLATES, BOLTED AND TORQUED. OTHER BOLTS TO BE SUPPLIED IN PLACE FINGER TIGHT.
 - * ALL WELDING SHALL CONFORM TO CURRENT A.W.S. SPECIFICATION D1.1.
 - * HOLLOW STRUCTURAL SECTIONS ARE SHOWN IMPERIAL DESIGNATION.

NO.	DATE	DESCRIPTION	BY
06-11-05		IMPERIAL BOLT SIZE EQUIVALENT D.H.D.	J.R.C.
04-11-20		TUBE SEAM; SPLICE GRINDING	J.R.C.
03-06-15		DIMENSIONS ON SECTION	J.R.C.
01-11-19		BOLTS DELETED - (C) DETAIL	K.S.T.
01-09-15		WELD SYMBOL & GENERAL NOTES CHANGED	K.S.T.

APPROVED
[Signature]
DATE: JULY 7/28

Alberta TRANSPORTATION BRIDGE BRANCH METRIC

TUBE TYPE TRUSS RAIL

DESIGNED	DRAWN BY	DATE	CHECKED BY	DATE	STREAM	LOCATION	WHY NO.	SCALE	FILE NO.	SHEET	DWG NO.
R. G. QUINTON	L. W. KOHLMANN	75 01 24						1:5		OF	S-1404