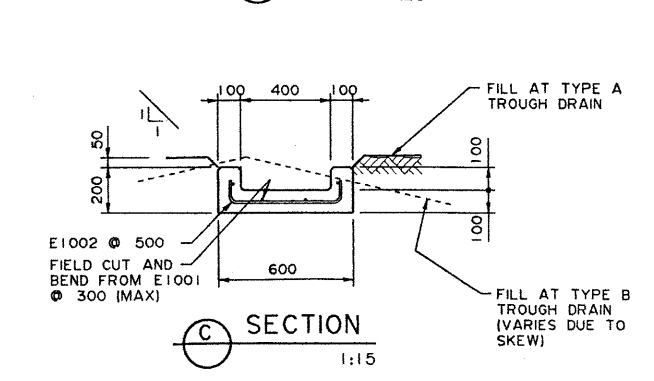
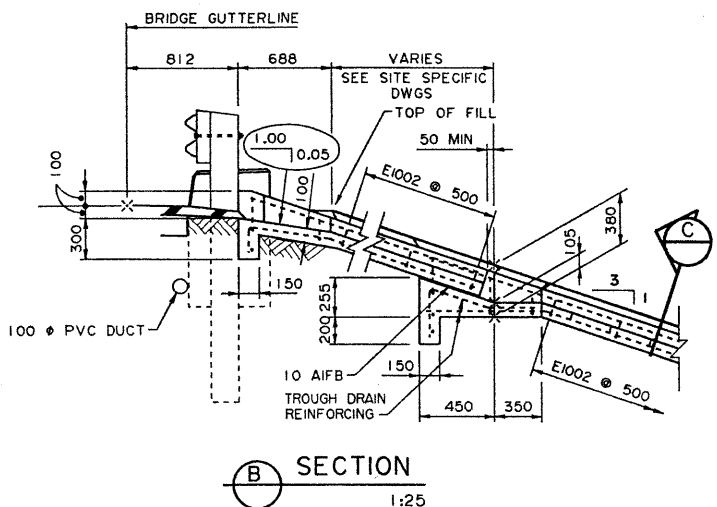
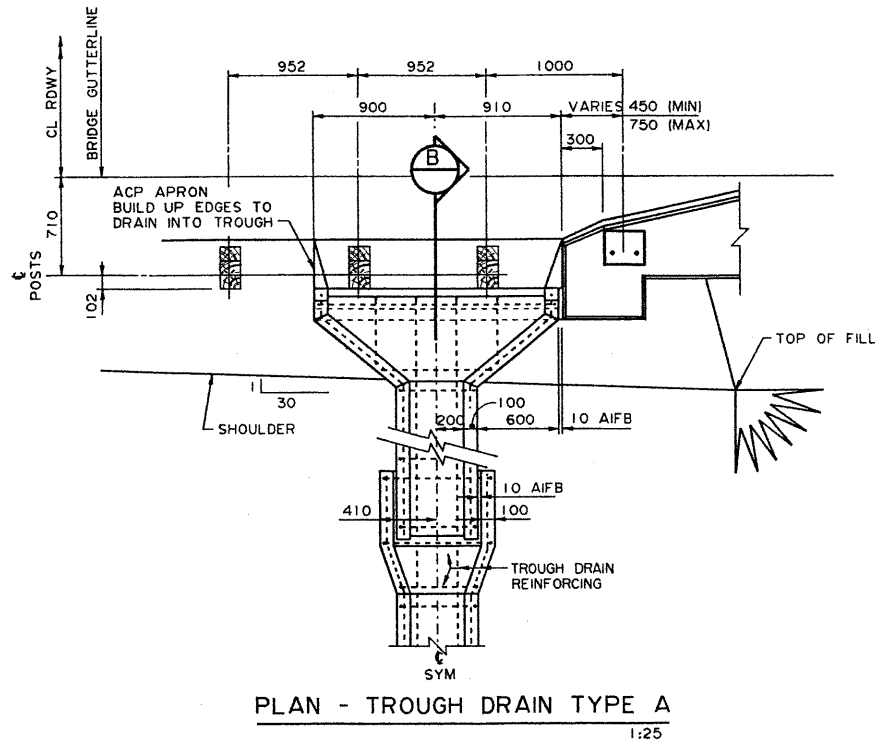


STANDARD CURB END DETAILS - WITHOUT TROUGH DRAIN
1:25

GENERAL NOTES

- DETAILS ARE DRAWN TO SCALE AT MINIMUM REQUIRED DIMENSIONS. DIMENSIONS ARE GIVEN IN mm.
- TROUGH DRAIN REINFORCING STEEL SHALL BE FIELD CUT AND BENT FROM BARS MARKED E1001 UNLESS NOTED OTHERWISE.
- MINIMUM CLEAR COVER TO REINFORCING SHALL BE 35 mm UNLESS NOTED OTHERWISE.
- LONGITUDINAL REINFORCING BARS SHALL BE SPACED AT A MAXIMUM OF 300 mm. TRANSVERSE BARS SHALL BE SPACED AT A MAXIMUM OF 500 mm.
- ALL TROUGH DRAIN CONCRETE SHALL BE CLASS C.
- ALL TROUGH DRAIN CONCRETE SURFACES SHALL HAVE A CLASS I FINISH UNLESS NOTED OTHERWISE.
- ASPHALT IMPREGNATED FIBERBOARD (AIFB) SHALL CONFORM TO THE CURRENT ASTM SPECIFICATION D1751 FOR PREFORMED EXPANSION JOINT FILLERS.

X = HEADSLOPE (ON SQ)
A = (1 + X²) x 100/X
B = 1.1 x A x X
C = 800 - B
D = C/X
E = A + D
F = (2.6 x A) + A



PLAN - TROUGH DRAIN TYPE A
1:25

SECTION B
1:25

SECTION C
1:15

NOTE: THIS DRAWING HAS BEEN REDUCED TO 22"X34" DO NOT SCALE

PRELIMINARY
OFFICE COPY
Bridge Branch

NOT USED
(NO LONGER IN USE) JAN 24, 2001

TRANSPORTATION AND UTILITIES
BRIDGE ENGINEERING BRANCH

REV	DATE	DESCRIPTION	BY	DATE	STREAM	LOCATION	HIGHWAY	FILE	SHEET	DRAWING
DESIGNED	DRAWN	DATE	CHECKED	DATE						
SBD	MIK	90-05-03								S-1408-91