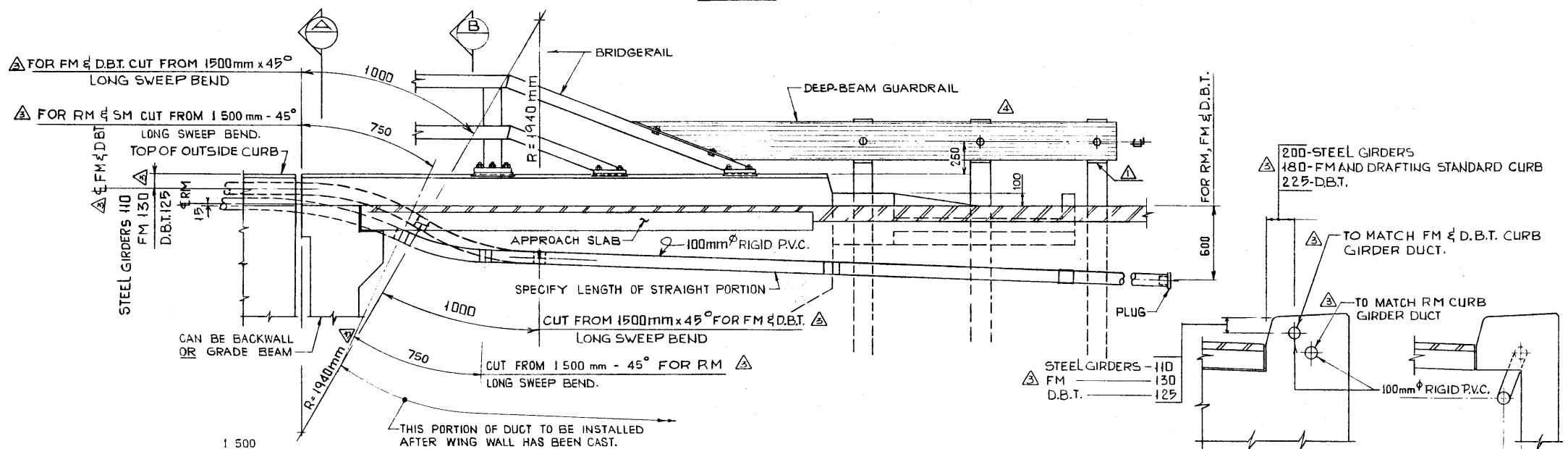


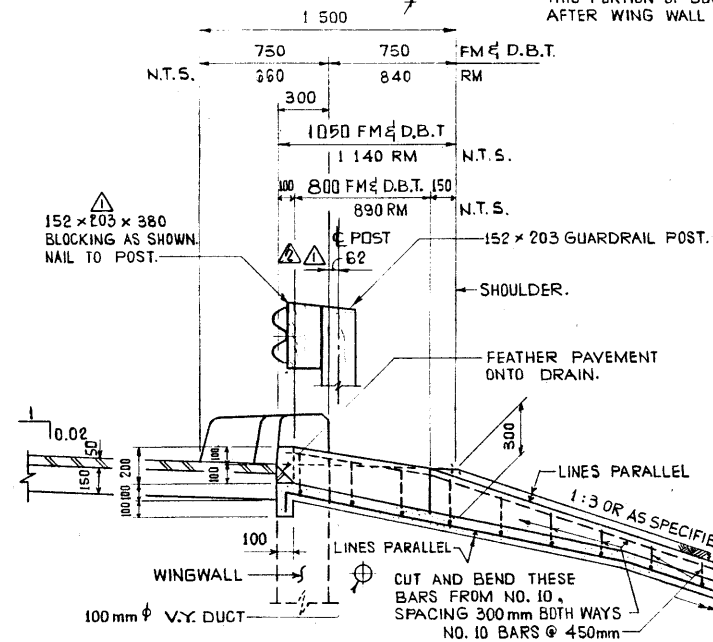
PLAN



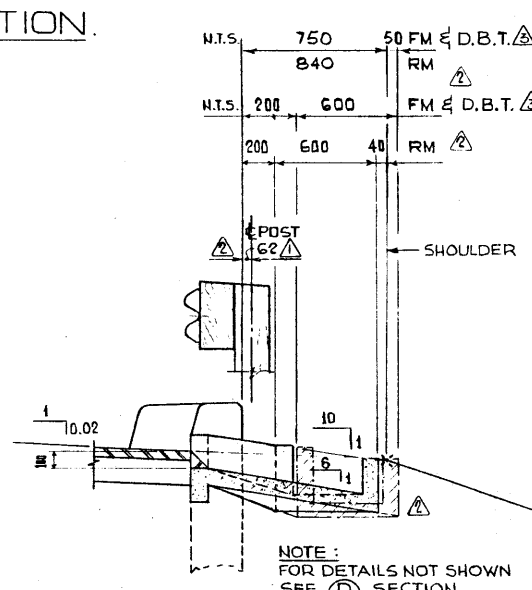
ELEVATION

GENERAL NOTES

- THIS DRAWING FOR OFFICE REFERENCE ONLY.
- PURPOSE OF THIS DRAWING IS TO STANDARDIZE END OF CURB TREATMENT, TROUGH DRAINS AND V.Y. DUCT PLACEMENT.
- PLEASE USE THESE DETAILS AND ADVISE OF ANY PROBLEMS OR CONFLICTS WHICH ARISE SO THAT A MORE FINALIZED STANDARD CAN BE DEVELOPED.
- DIMENSIONS WHICH VARY BETWEEN STRUCTURES AND THEREFORE MUST BE CHOSEN BY THE DESIGNER ARE:
 END POST OF BRIDGE RAIL TO END OF CURB (750mm MAX. TO 450mm MIN.)
 LENGTH OF STRAIGHT PORTION OF RIGID P.V.C. DUCT (FOR UNUSUAL ABUTMENTS THESE BENDS MAY NEED TO BE EXTENDED).
- TYPE "A" OR "B" TROUGH DRAINS TO BE CHOSEN AS REQUIRED AND SHOWN ON ABUTMENT OR MISCELLANEOUS DRAWING AS WELL AS GENERAL LAYOUT
- ALL DIMENSIONS ARE GIVEN IN mm.

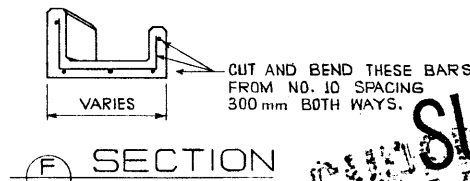


SECTION D FOR TYPE 'A' TROUGH DRAIN.



SECTION E TYPE 'B' TROUGH DRAIN

SECTION A SECTION B



SUPERSEDED

12

OFFICE COPY ONLY

APPROVED		Alberta TRANSPORTATION BRIDGE BRANCH		METRIC	
STANDARDIZATION		STD. ABUTMENT DETAILS FOR:			
CURB TERMINATION.		-			
TROUGH DRAIN.		-			
RIGID P.V.C. DUCT INSTALLATION		-			
DESIGNED	DRAWN BY	DATE	CHECKED BY	DATE	STREAM
R.G. QUINTON	F.W. BUDA	77 06 28			
NO.	DATE	DESCRIPTION	BY	DATE	
84-06-22		GUARDRAIL POST, V.Y. DUCT	J.C.Y.		
83-06-22		D.B.T. CURB - DUCT LOCATION	R.V.L.		
82-03-18		TYPE 'B' TROUGH CHANGED	J.R.C.		
82-01-26		GUARDRAIL POST BLOCKING	J.R.C.		
FILE NO.	SHEET	DWG NO.			
		S-1408			